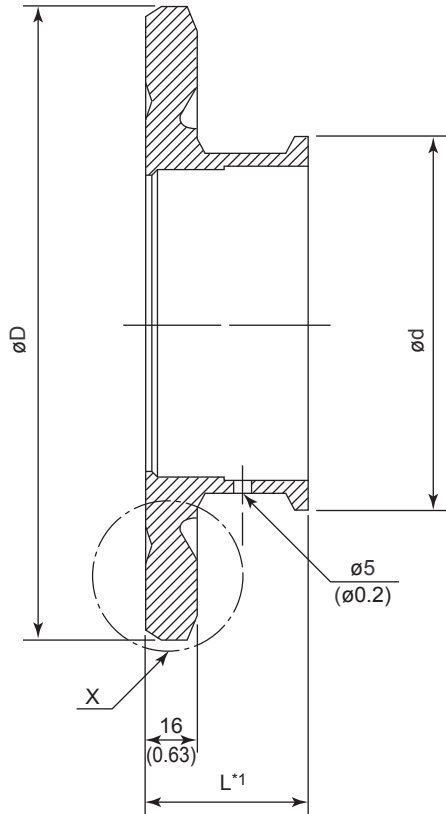


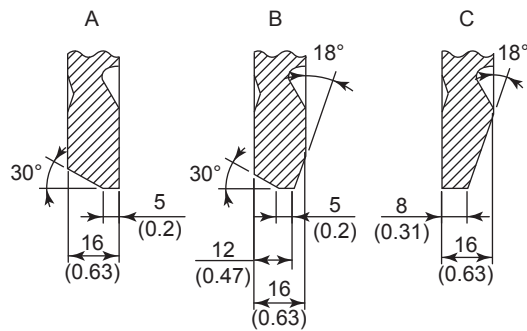
Unit: mm (approx. inch)



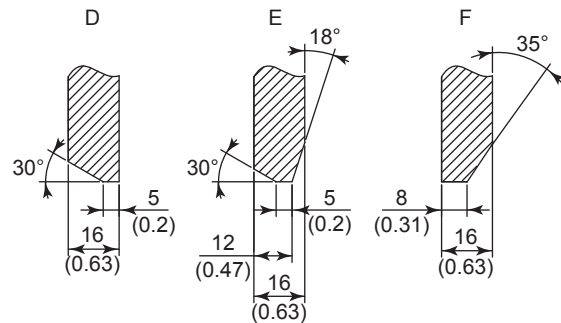
*1: L is 50 mm (1.97 inch) or 100 mm (3.94 inch).

Detail of X

- With a groove to avoid welding distortion
Welding Part Plate Thickness Code: A, B or C



- No groove to avoid welding distortion
Welding Part Plate Thickness Code: D, E or F



	$\varnothing D$	$\varnothing d$
ISO101.6 Clamp	200 (7.87)	119 (4.69)
ISO76.1 Clamp	150 (5.91)	91 (3.58)
ISO51 Clamp	110 (4.33)	64 (2.52)