

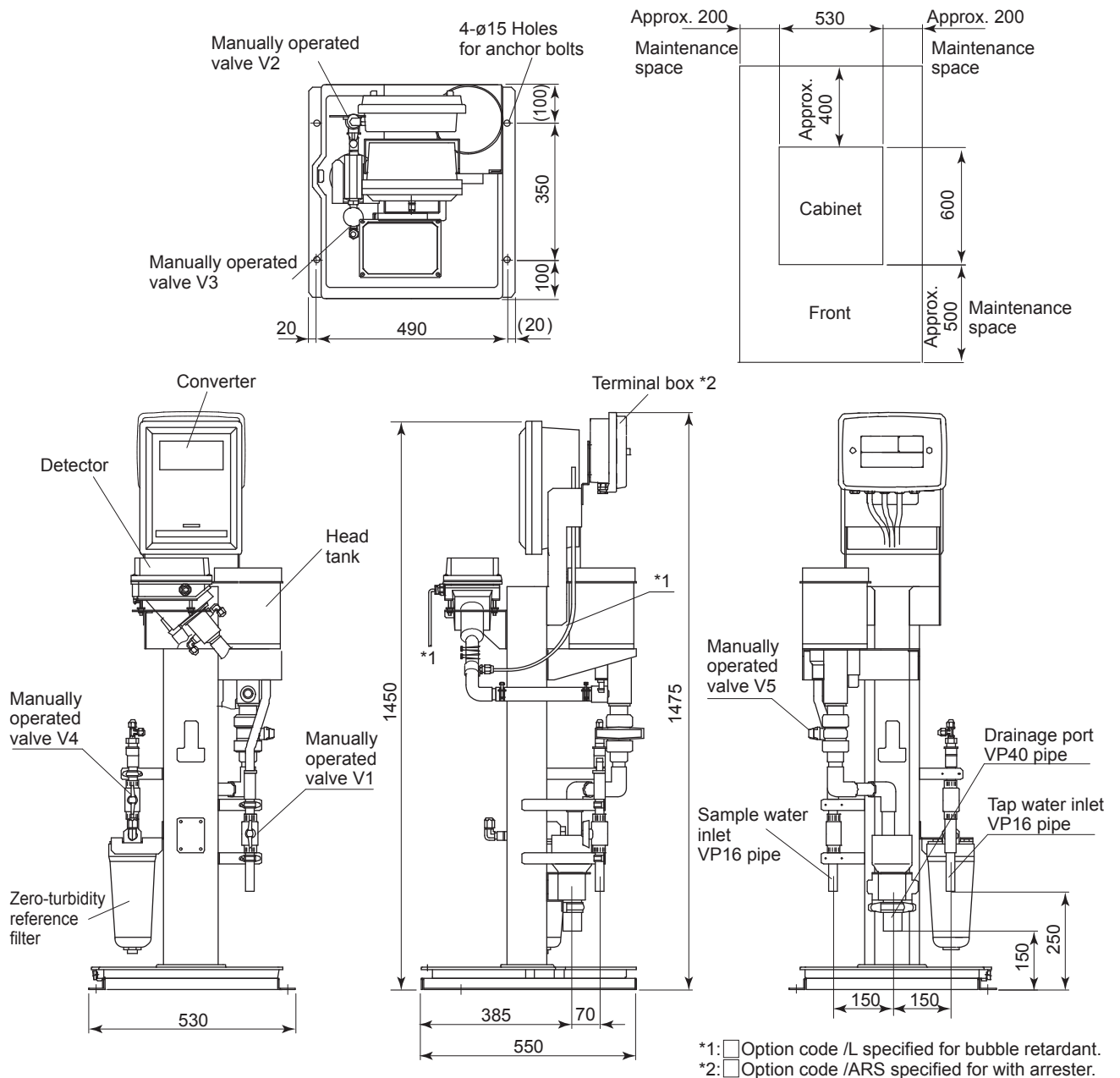
Drawings TB400G-□-□-A1

EXA TB

Surface Scattering Light Turbidity Meter (With sampling System, but without automatic cleaning or automatic zero calibration)

□ TB400G-□-□-A1 (Bottom piping)

Unit: mm

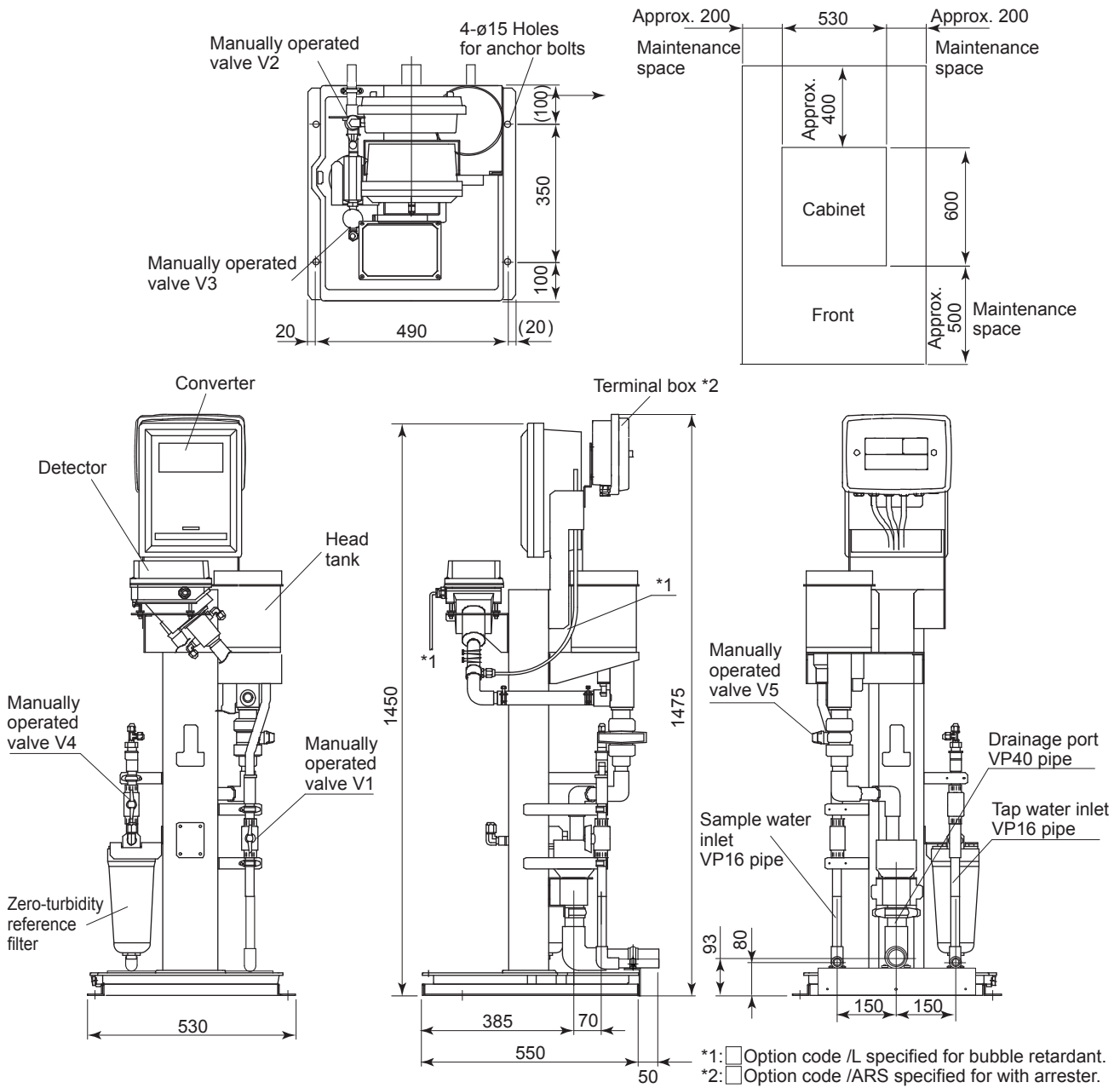


Weight: approx. 50 kg

Unless otherwise specified, differences in the dimensions are specified as: General tolerance = ± (Criteria of tolerance class IT18 in JIS B0401-1998) / 2.

□ TB400G-□-□-A1/B (Rear piping)

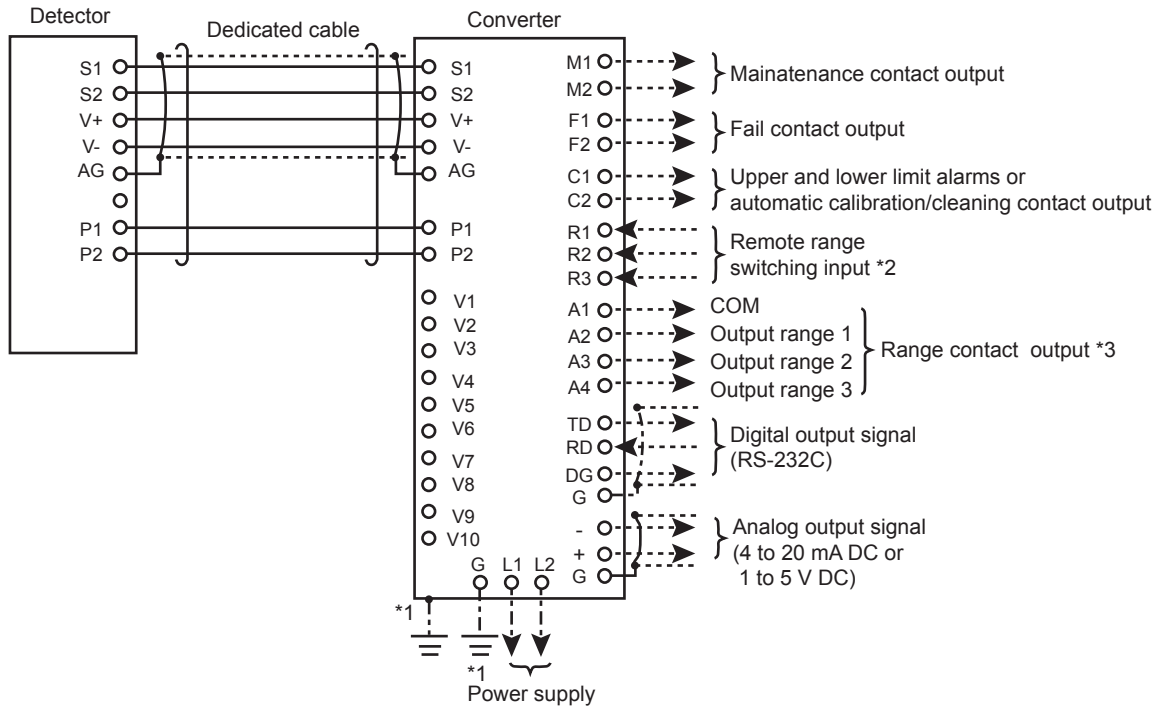
Unit: mm



Weight: approx. 50 kg

Unless otherwise specified, differences in the dimensions are specified as: General tolerance = ± (Criteria of tolerance class IT18 in JIS B0401-1998) / 2.

Connection diagram



(Note)

Dotted line should be wired by customer.

*1: Ground terminal \perp on the outside of the converter case with a grounding resistance of 100 Ω or less. Ground the power cord instead only if the above grounding is not feasible.

(Note) Do not use two-point grounding.

*2: Remote range switching method

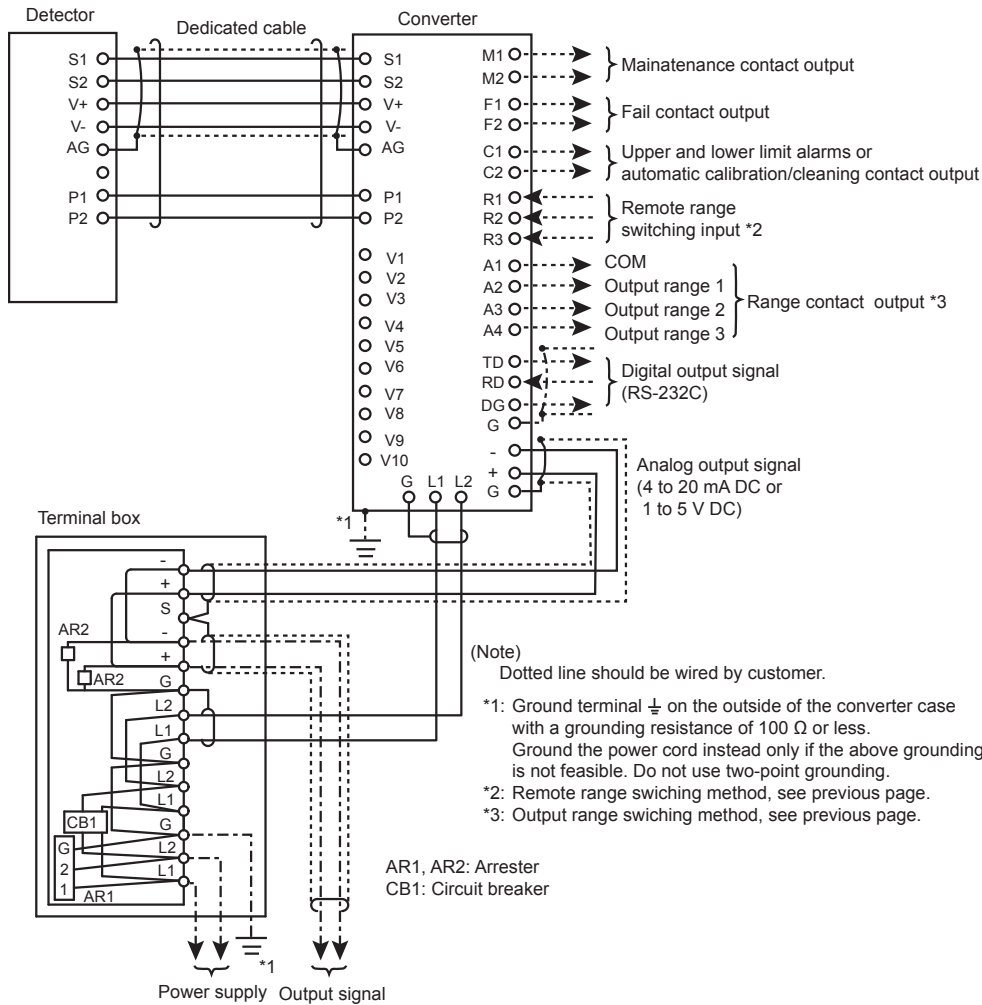
Output \ Contact	R1 to R2	R1 to R3
Output range 1	OFF	OFF
Output range 2	ON	OFF
Output range 3	OFF	ON

Resistance (ON): 200 Ω or less
(OFF): 100 k Ω or more

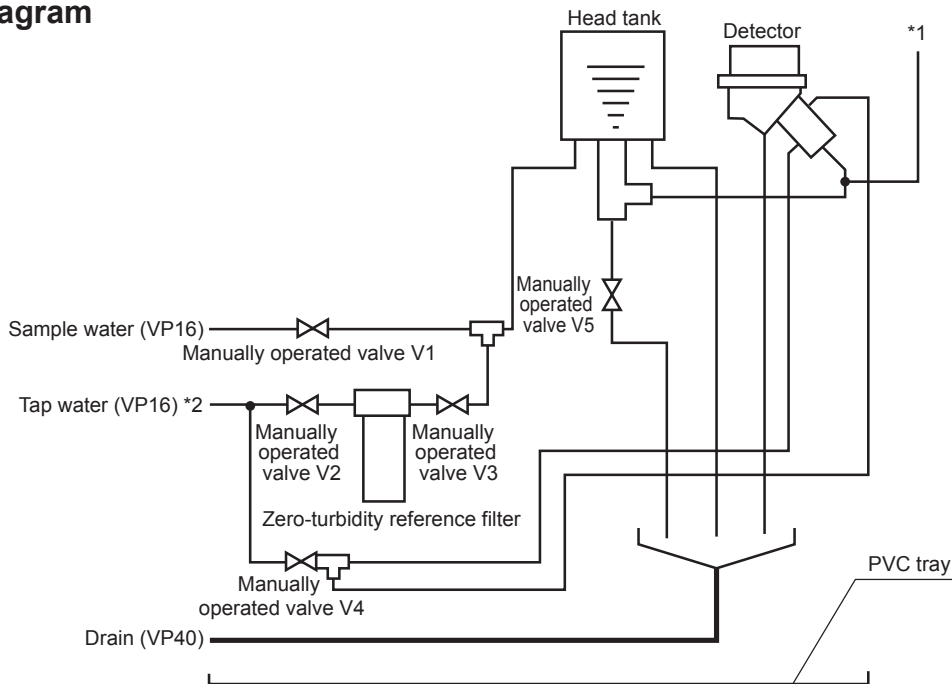
*3: Output range switching method

Output \ Contact	A1 to A2	A1 to A3	A1 to A4
Output range 1	Close	Open	Open
Output range 2	Open	Close	Open
Output range 3	Open	Open	Close

Connection diagram with arrester option (/ARS)



Piping diagram



*1: □ Option Code /L (For bubble retardant)

*2: Reverse flow of tap water should be prevented using with a check valve on the supply line of tap water.