

AC regulators

Approximate total loss $1.3 \times I_{RMS}$

Assembly Type / Part Number	I _{DC} amps Air Forced 5m/s			I _{FSM} amps I _{TSM} amps	I ² t A ² S	Dimensions mm				Weight Kgs	Device Type	No. of Devices	Heat Sink Type
	T _a 25°C	T _a 35°C	T _a 45°C			Fig	Width	Height	Depth				
SXC1195FR	1195	1098	997	19100	1.82 x 10 ⁶	1	168	415	212	10	N1806QK	2	(2 x 150, 1 x 330)
SXC1464FR	1464	1348	1227	32400	5.25 x 10 ⁶	1	168	415	212	10	N2367MK	2	(2 x 150, 1 x 330)
SXC1788FR	1788	1636	1480	50900	12.95 x 10 ⁶	1	168	415	212	10	N3904HK	2	(2 x 150, 1 x 330)

Single phase fully controlled bridges

Approximate total loss $2.5 \times I_{DC}$

SXC1076FB	1076	988	897	19100	1.82 x 10 ⁶	2	330	415	212	20	N1806QK	4	(2 x 150, 1 x 330)
SXC1318FB	1318	1213	1104	32400	5.25 x 10 ⁶	2	330	415	212	20	N2367MK	4	(2 x 150, 1 x 330)
SXC1609FB	1609	1473	1332	50900	12.95 x 10 ⁶	2	330	415	212	20	N3904HK	4	(2 x 150, 1 x 330)

Three phase fully controlled bridges

Approximate total loss $3 \times I_{DC}$

SXC1517FG	1517	1396	1270	19100	1.82 x 10 ⁶	3	492	415	212	30	N1806QK	6	(2 x 150, 1 x 330)
SXC1871FG	1871	1725	1573	32400	5.25 x 10 ⁶	3	492	415	212	30	N2367MK	6	(2 x 150, 1 x 330)
SXC2319FG	2319	2125	1926	50900	12.95 x 10 ⁶	3	492	415	212	30	N3904HK	6	(2 x 150, 1 x 330)

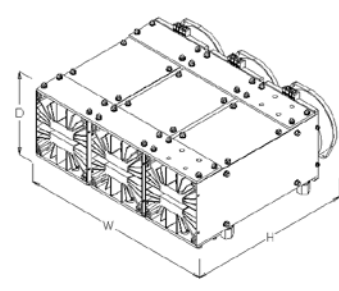
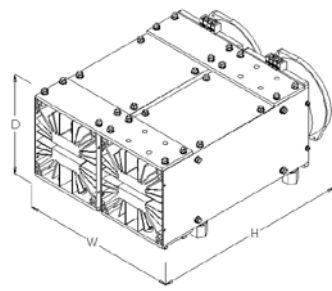
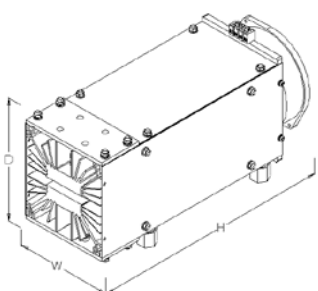
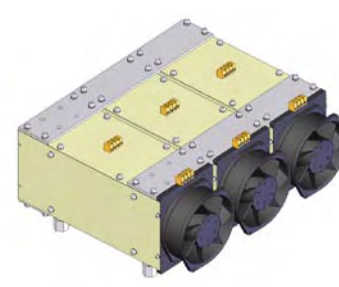
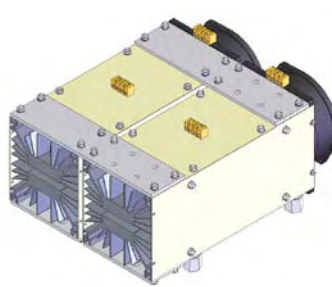
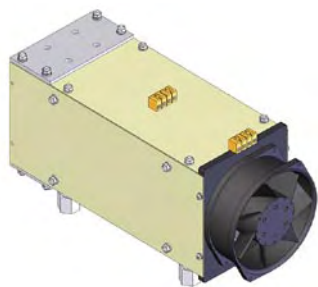
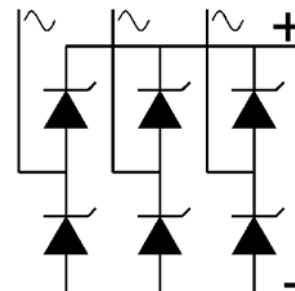
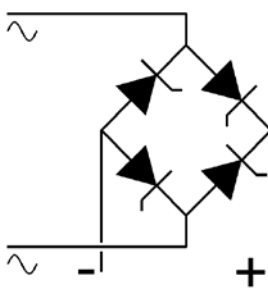
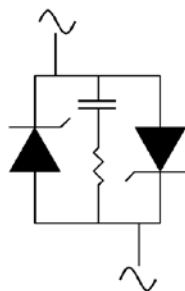


Figure 1
Weight 10 kg

Figure 2
Weight 20 kg

Figure 3
Weight 30 kg