

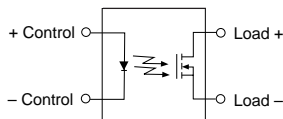
## Single Pole Normally Open: 1-Form-A - Operational temperature range of -40° to 85°C

Part Number	Load Voltage	Load Current	On Resistance	Input Control Current	Switching Speeds $T_{ON}/T_{OFF}$ ms	Isolation Voltage	Package Type ①	Features
► New	V	mA	$\Omega$	mA		$V_{rms}$		
LCA126	250	170	15	5	5 / 5	3750	6-Pin SMT, TH	Current Limit
LCA127	250	200	10	5	5 / 5	3750	6-Pin SMT, TH	
LCA127L	250	170	15	5	5 / 5	3750	6-Pin SMT, TH	
LCA129	250	170	20	2	8 / 8	3750	6-Pin SMT, TH	
LCA710	60	1000	0.5	10	2.5 / 0.25	3750	6-Pin SMT, TH	Low Off-State Leakage 10nA High Load Current
LCA712	60	1000	0.5	10	2.5 / 0.5	3750	6-Pin SMT, TH	
LCA715	60	1800	0.25	10	5 / 2	3750	6-Pin SMT, TH	
► LCA717	30	2000	0.15	2	3 / 3	3750	6-Pin SMT, TH	
LCA182	350	120	35	0.25	3 / 3	3750	6-Pin SMT, TH	Ultra Low Input Control Current
OMA160	250	50	100	10	0.125/0.125	3750	6-Pin SMT, TH	Low Off-State Leakage 25nA
PLA110	400	150	22	5	1 / 0.25	3750	6-Pin SMT, TH	Current Limit
PLA110L	400	150	25	5	1 / 0.25	3750	6-Pin SMT, TH	
PLA132	60	600	1	5	5 / 2	3750	6-Pin SMT, TH	
PLA134	100	350	3	5	5 / 5	3750	6-Pin SMT, TH	
PLA140	400	250	8	5	3 / 1	3750	6-Pin SMT, TH	Current Limit
PLA140L	400	170	13	5	5 / 3	3750	6-Pin SMT, TH	
PLA143	600	100	50	2	5 / 5	4000	6-Pin SMT, TH	
PLA150	250	250	7	5	2.5 / 0.5	3750	6-Pin SMT, TH	
PLA160	300	50	100	10	0.05 / 0.05	3750	6-Pin SMT, TH	Low Off-State Leakage 25nA
PLA170	800	100	50	5	5 / 5	3750	6-Pin SMT, TH	
PLA190	400	150	22	5	1 / 0.5	5000	6-Pin SMT, TH	
PLA191	400	250	8	5	1.5 / 0.25	5000	6-Pin SMT, TH	
PLA192	600	150	22	5	5 / 5	5000	6-Pin SMT, TH	
PLA193	600	100	50	5	5 / 5	5000	6-Pin SMT, TH	
XCA170	350	100	50	5	5 / 5	3750	6-Pin SMT, TH	

## Single Pole Normally Open: 1-Form-A DC-Only - Operational temperature range of -40° to 85°C

Part Number	Load Voltage	Load Current	On Resistance	Input Control Current	Switching Speeds $T_{ON}/T_{OFF}$ ms	Isolation Voltage	Package Type ①	Features
	V	mA	$\Omega$	mA		$V_{rms}$		
CPC1002N	60	700	0.55	2	5 / 2	1500	4-Pin SMT	
CPC1004N	100	300	4	2	3 / 1	1500	4-Pin SMT	Operat. Temperat. to +110°C

### Block diagram



① For Package Type, SMT indicates Surface Mount Technology while TH indicates Through-hole.