

Vickers® Vane Pumps
Service Data

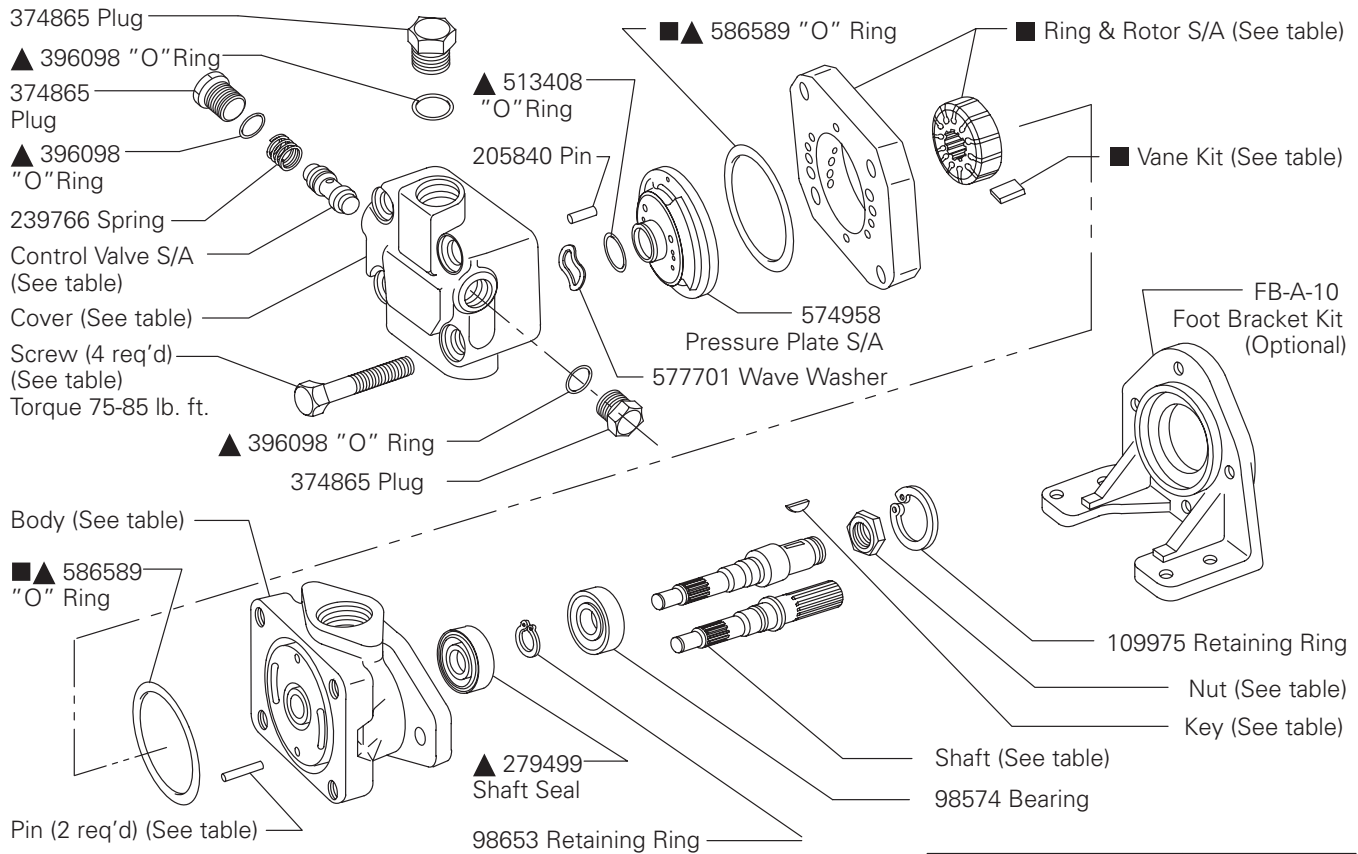


EATON

Powering Business Worldwide

Vane Pump

V20NF-***T-***-22



- ▲ - Included in Seal Kit 920371
- - Included in Cartridge Kit

Model	Body
V20NF-1D	583170
V20NF-4D	583172
V20NF-1F	297228
V20NF-1P	280689
V20NF-4P	308628
V20NF-1S	294266

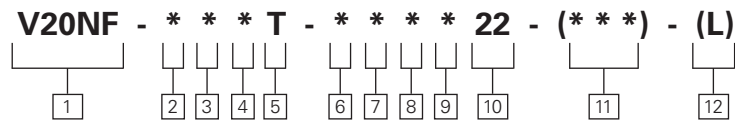
Model	Cover
V20NF-***T-***2*-22	452272
V20NF-***T-***3*-22	452240
V20NF-***T-***4*-22	452242
V20NF-***T-***5*-22	452069
V20NF-***T-***6*-22	452244
V20NF-***T-***7*-22	574959
V20NF-***T-***8*-22	452071
V20NF-***T-***9*-22	478133
V20NF-***T-***10*-22	452274

Model	Control Valve S/A
V20NF-***T-***C-22	232794
V20NF-***T-***D-22	232795
V20NF-***T-***E-22	232796
V20NF-***T-***F-22	232797
V20NF-***T-***G-22	232798
V20NF-***T-***H-22	232799
V20NF-***T-***J-22	233019
V20NF-***T-***K-22	233020
V20NF-***T-***L-22	266200

Model	Pin	Screw	■ Vane Kit	■ Ring & Rotor S/A	Cartridge Kit
V20NF-***5T	2161	11165	923651	503157	923656
V20NF-***6T				452235	923657
V20NF-***7T				452261	923658
V20NF-***8T				574954	923659
V20NF-***9T	2478	9431	923652	452264	923660
V20NF-***10T				452267	923661
V20NF-***11T				574945	923662
V20NF-***12T	16662	96168	923653	452270	923663
V20NF-***13T				452245	923664

Model	Shaft	Key	Nut
V20NF-***T-1	280372	5881	—
V20NF-***T-3	280504	1615	132260
V20NF-***T-6	297330	1609	—
V20NF-***T-10	324043	1609	—
V20NF-***T-11	280515	—	—
V20NF-***T-38	328096	—	—
V20NF-***T-101	478142	5881	—
V20NF-***T-103	478136	1615	132260
V20NF-***T-138	478122	—	—
V20NF-***T-203	502682	1615	132260
V20NF-***T-238	502235	—	—

Model Code



1 Model Series

V20NF – Vane pump, 20 size with flow control valve cover & internal drain

2 Pump Mounting

- 1 – 2 Bolt
- 2 – Foot mount - body inlet port @ 12 o'clock (viewed from shaft end)
- 3 – Power take-off
- 4 – Face
- 23 – Body inlet port @ 3 o'clock
- 26 – Body inlet port @ 6 o'clock
- 29 – Body inlet port @ 9 o'clock

3 Inlet Body Port

- D – 1.312-12 (SAE straight thread)
- F – 2 bolt flange
- P – 1.25 N.P.T.
- S – 1.625-12 (straight thread)

4 Ring Capacity @ 1200 RPM

5-5 GPM	8-8 GPM	11-11 GPM
6-6 GPM	9-9 GPM	12-12 GPM
7-7 GPM	10-10 GPM	13-13 GPM

5 Flow Control Cover

(Pressure port - .750-16 straight thread)

6 Shaft Extension Type

- For 10-13 GPM units:
- 1 – Straight keyed (standard)
 - 3 – Threaded
 - 6 – Straight Stub
 - 10 – Threaded Straight Stub
 - 11 – Splined
 - 38 – Splined

For satisfactory service life of these components, use full flow filtration to provide fluid which meets ISO cleanliness code 18/15 or cleaner. Selections from Eaton OFP, OFR and OFRS filter series are recommended.

For 7-9 GPM units:

- 101 – Straight keyed (standard)
- 103 – Threaded
- 138 – Splined

For 5-6 GPM units:

- 203 – Threaded
- 238 – Splined

7 Outlet pressure port position

(Viewed from cover end)

- A – Opposite inlet port
- B – 90° CCW from inlet port
- C – In line with inlet port
- D – 90° CW from inlet port

8 Flow Rate thru Orifice in Cover

2-2 GPM	7-7 GPM
3-3 GPM	8-8 GPM
4-4 GPM	9-9 GPM
5-5 GPM	10-10 GPM
6-6 GPM	

9 Control Valve Pressure Setting

C - 750 PSI	H -2000 PSI
D - 1000 PSI	J -2250 PSI
E - 1250 PSI	K -2500 PSI
F - 1500 PSI	L -2750 PSI
G- 1750 PSI	

10 Design

11 Special Suffix Feature

(Omit if not required.)

12 Left Hand Rotation

(Viewed from shaft end)

(Omit for right hand rotation.)

Eaton
Hydraulics Group USA
14615 Lone Oak Road
Eden Prairie, MN 55344
USA
Tel: 952-937-9800
Fax: 952-294-7722
www.eaton.com/hydraulics

Eaton
Hydraulics Group Europe
Route de la Longeraie 7
1110 Morges
Switzerland
Tel: +41 (0) 21 811 4600
Fax: +41 (0) 21 811 4601

Eaton
Hydraulics Group Asia Pacific
Eaton Building
4th Floor, No. 3 Lane
280 Linhong Rd. Changning District
Shanghai 200335
China
Tel: (+86 21) 5200 0099
Fax: (+86 21) 5200 0400