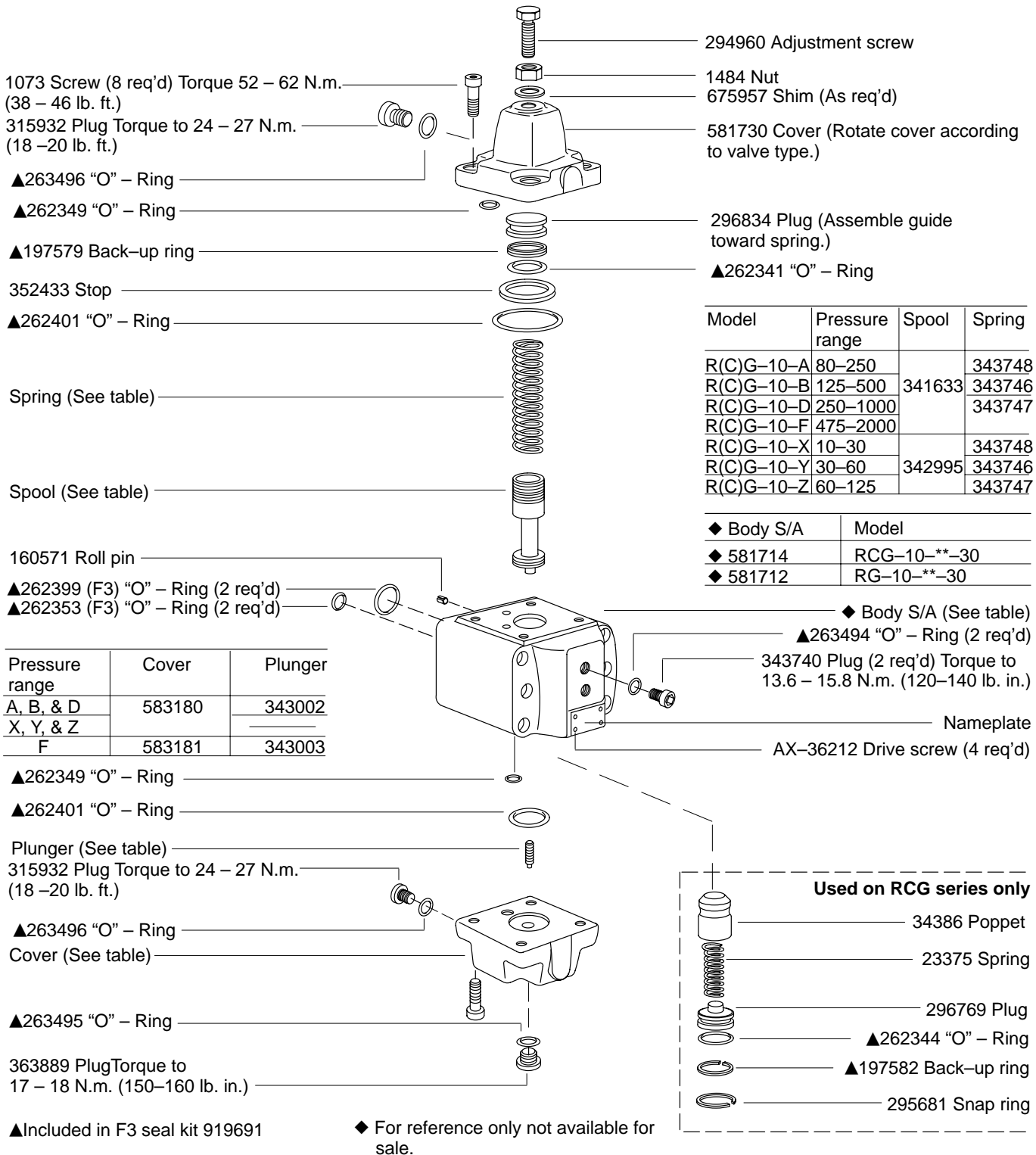


Pressure Relief

Pressure Control Valves

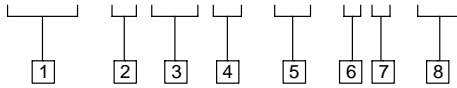


(F3)R(C)G-10-**-30 Series



Model Code

(F3) - R (C) G - 10 - * * - 3*



1 Special seals
(Omit on STD. models.)

2 Pressure control valve

3 Check valve option
C – With integral check valve
 (Reverse free flow)
Omitted – Without check valve

4 Mounting
 Manifold or Subplate

5 Nominal valve size
10 – 1 1/4"

6 Pressure range
A – 80 – 250 PSI
B – 125 – 500 PSI
D – 250 – 1000 PSI
F – 475 – 2000 PSI
X – 10 – 30 PSI
Y – 30 – 60 PSI
Z – 60 – 125 PSI

7 Valve types
 (Inset views at bottom of page show cover positions for the (4) valve types.)

8 Design

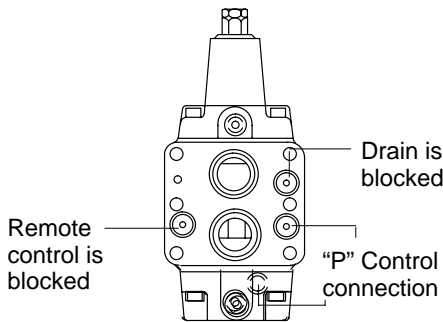
Typical model number
 RCG-10-D4-30

Note

Assemble covers as shown to obtain valve action desired.

Type 1

RG series – Back pressure valve.
 RCG series – Counterbalance valve.
 Directly controlled internal drain

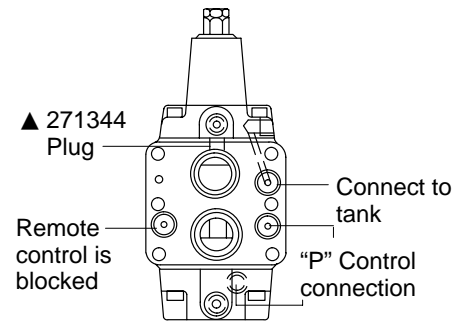


Note

Assemble covers as shown to obtain valve action desired.

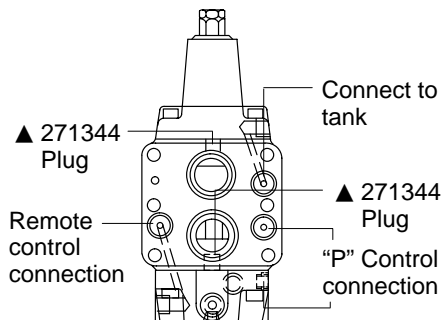
Type 2

RG or RCG series – Sequence valves.
 Directly controlled external drain



Type 3

RG or RCG series – Sequence valves.
 Remotely controlled external drain



Type 4

RG series – Unloading valve.
 RCG series – Counterbalance valve.
 Remotely controlled internal drain

