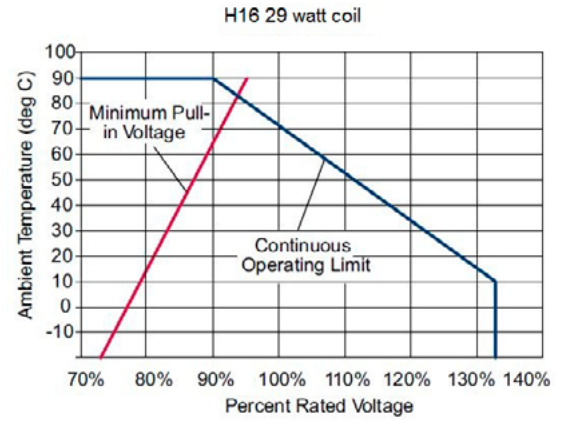


SPECIFICATIONS

- Duty cycle: 100% at 115% of rated voltage at 40°C [104°F]
- Magnet wire insulation: (200°C)
- Ambient temperature range: -20 to 40 °C [-4 to 104 °F]
- Environmental protection rating: IP69K: AS, DE, FL and M3
- Input voltage range: 85% to 115% of rated voltage
- Optional bi-directional transient voltage suppression diodes: Non polarity dependent, 51 volt nominal breakdown voltage
- Weight: 0.34 kg [0.75 lb]



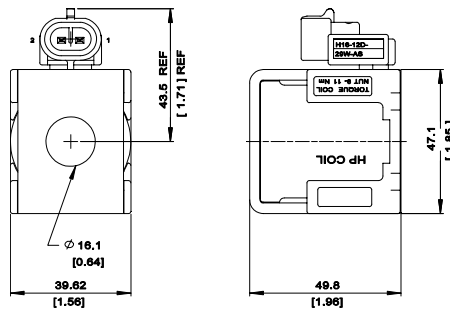
ELECTRICAL SPECIFICATIONS

29 watt coils

Voltage (V)	12 VDC	24 VDC
Resistance (Ohms) @ 20 °C [68 °F]	4.8	19.8
Current draw (A) @ 20 °C [68 °F]	2.48	1.21

TERMINALS

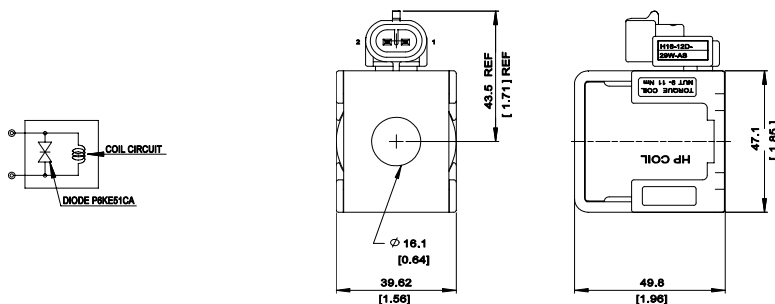
Amp SuperSeal 1.5/MetriPak 150 Type 1 Code AS



Part numbers

Voltage (V)	Resistance (Ohm)	Part Number
12	4.8	H16-12D-29W-AS
24	19.8	H16-24D-29W-AS

Amp SuperSeal 1.5/MetriPak 150 Type 1 w/Diode Bi-Directional Code ASDB

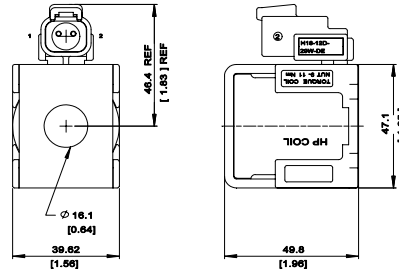


Part numbers

Voltage (V)	Resistance (Ohm)	Part Number
12	4.8	H16-12D-29W-AS-DB
24	19.8	H16-24D-29W-AS-DB

TERMINALS (continued)

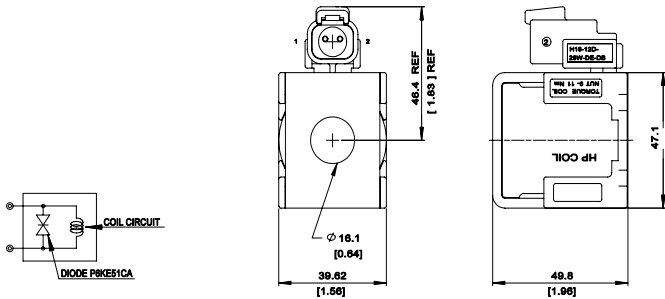
Deutsch Code DE



Part numbers

Voltage (V)	Resistance (Ohm)	Part Number
12	4.8	H16-12D-29W-DE
24	19.8	H16-24D-29W-DE

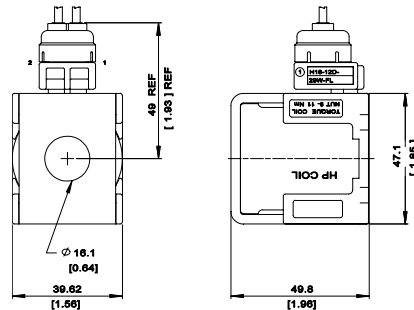
Deutsch w/Diode, Bi-Directional Code DEDB



Part numbers

Voltage (V)	Resistance (Ohm)	Part Number
12	4.8	H16-12D-29W-DE-DB
24	19.8	H16-24D-29W-DE-DB

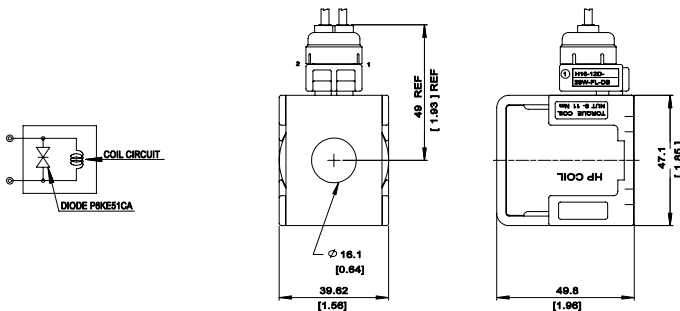
Lead wires Code FL



Part numbers

Voltage (V)	Resistance (Ohm)	Part Number
12	4.8	H16-12D-29W-FL
24	19.8	H16-24D-29W-FL

Lead wires w/Diode, Bi-Directional Code FLDB



Part numbers

Voltage (V)	Resistance (Ohm)	Part Number
12	4.8	H16-12D-29W-FL-DB
24	19.8	H16-24D-29W-FL-DB