



# Pilot Operated Check Valves Technical Information

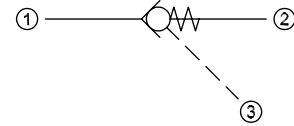
## Pilot to Close

### CP460-1

#### OPERATION

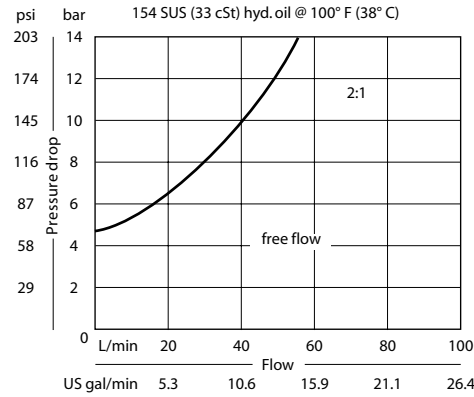
This valve is a pilot-to-close check valve.

#### Schematic



#### SPECIFICATIONS

##### Theoretical performance



##### Specifications

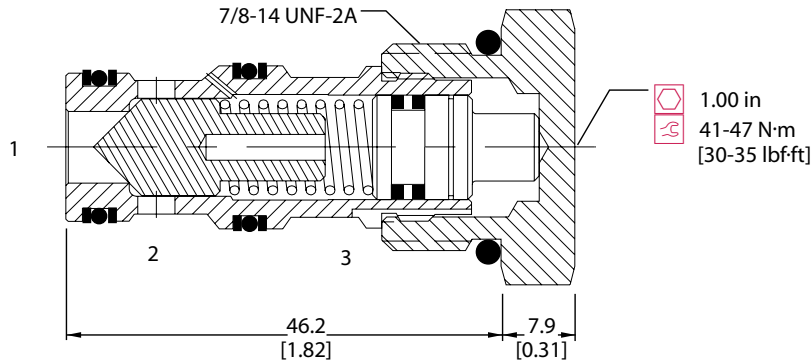
<b>Rated pressure</b>	210 bar [3000 psi]
<b>Rated flow at 7 bar [100 psi]</b>	22 l/min [5.8 US gal/min]
<b>Leakage</b>	6 drops/min @ Rated pressure
<b>Weight</b>	0.10 kg [0.21 lb]
<b>Pilot ratio</b>	2:1
<b>Cavity</b>	<b>SDC10-3</b>

Note: A piston seal requires a 4.5 bar [65 psi] or greater return spring.

#### DIMENSIONS

mm [in]

##### Cross-sectional view



#### ORDERING INFORMATION

**CP460 - 1 - B - 8S - 2 - 065 - 0**

<b>Seals</b>	Seal kit	<b>Piston seals</b>	0 = No seals
B = Buna-N	120009	S = Seals included	
V = Viton	120010		
<b>Housing and ports</b>	<b>Housing P/N</b>	<b>Crack Pressure</b>	bar [psi]
0 = No Housing	No Housing	065 = 4.48	[65]
SE3B = Al, 3/8 BSP	SDC10-3-SE-3B		
SE4B = Al, 1/2 BSP	SDC10-3-SE-4B		
6S = Al, #6 SAE	CP10-3-6S	<b>Pilot ratio</b>	
8S = Al, #8 SAE	CP10-3-8S	2 = 2:1	
Other housings available			