

ENGINEERING
TOMORROW



User Guide

Prosa IoT enablers association production line

For Prosa web portal

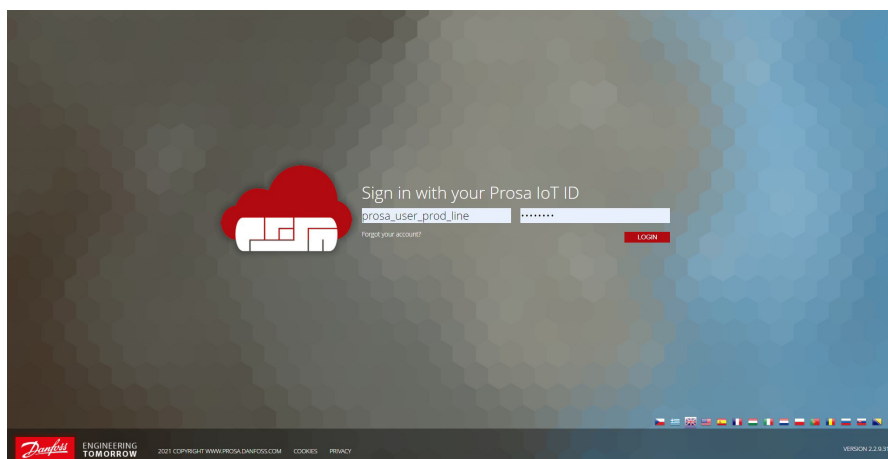


Content

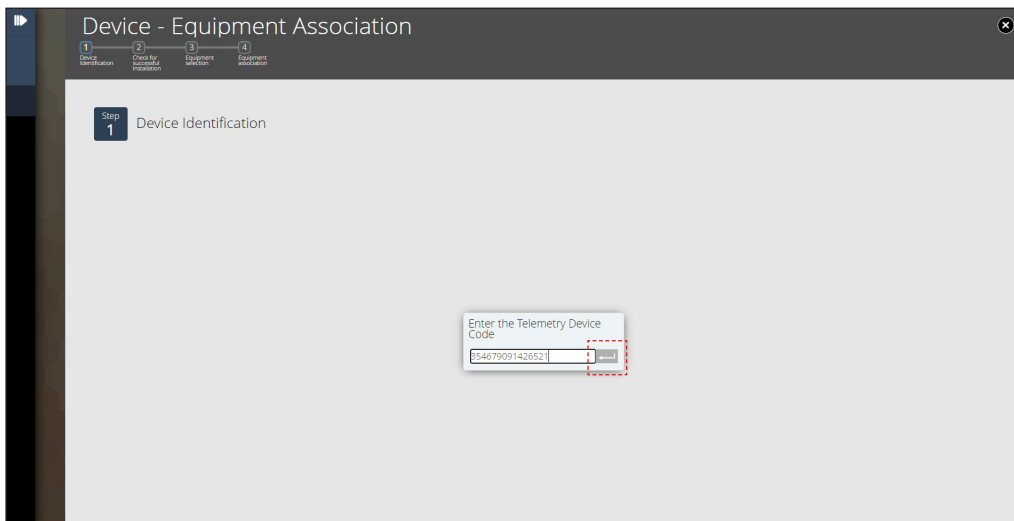
- 1. Prosa portal requirements and login 2
- 2. Detect the device to associate 2
- 3. Check for successful installation 3
- 4. Equipment association 3
 - 4.1 FAQs 3

1. Prosa portal requirements and login

- Application requirements:
 - PC with Internet access
 - Web Browser (Google Chrome is suggested)
- Use this link to access directly to the portal <https://vbx.prosa.com>
- Access the Portal with the credential provided by Danfoss

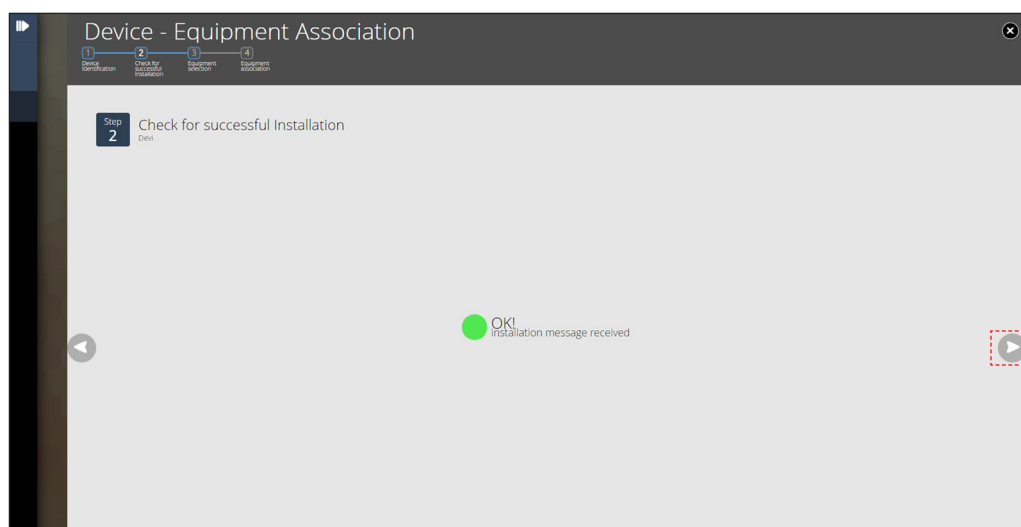


2. Detect the device to associate



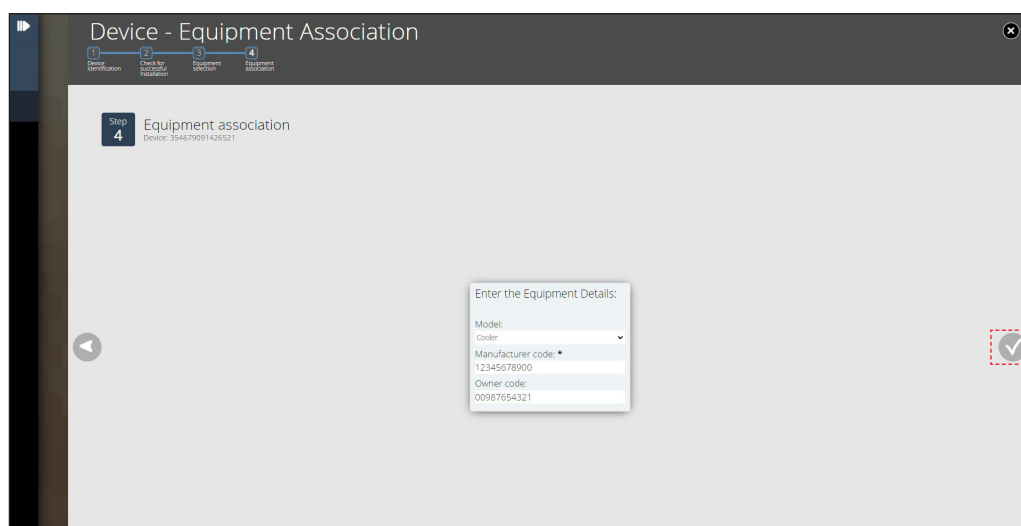
After the login in the portal, the system will automatically redirect you in the Device Equipment association process. On the first step you have to enter the IoT enabler serial number. You can also use a barcode scanner to reduce the risk of error.

3. Check for successful installation



The system will look for the installation message coming from the telemetry device. Once the message is received you can then see the thermostat information: this will help you to verify if the telemetry has been properly installed.

4. Equipment association



Enter the equipment information: specify the model, the S/N and, if present, the asset tag.

4.1 FAQs

The telemetry device is not recognized in step 1

Check the telemetry code and in case send an e-mail to support.prosa@danfoss.com

The step 2 has been loading for too long

Verify that the device is turned on and the led status accordingly to the installation manual. In case the problem persists, send an e-mail to support.prosa@danfoss.com

The Cooler model is not present in the list in the step 3

In case the cooler model is not present in the list of available models, send an e-mail to support.prosa@danfoss.com

ENGINEERING
TOMORROW

