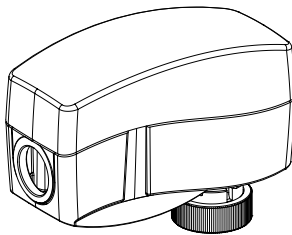




**Actuator Submittal, Proportional AMV 120 NL- 1 Motor Actuator**

<b>DATE:</b>	<b>SPECIFICATION SECTION:</b>			<b>PAGE:</b>	<b>of</b>	
<b>PROJECT</b>	<b>ARCHITECT/ENGINEER</b>	<b>AGENCY</b>	<b>REPRESENTATIVE</b>	<b>DATE</b>	<b>NOTES</b>	
		<b>ARCHITECT</b>				
		<b>ENGINEER</b>				
	<b>SUPPLIER</b>	<b>CONTRACTOR</b>	<b>CONTRACTOR 1</b>			
			<b>CONTRACTOR 2</b>			
			<b>OTHER</b>			
			<i>NOTE</i>	<i>COMMENT</i>		
<b>ORDER NO.</b>						



Model	Number	Unit Tag	Qty
AMV 120 NL- 1			

*Specification*

The motor actuator shall be 24VAC powered actuator and mount to the AB-QM valve body in sizes ranging from 1/2" to 1 1/4" valve sizes. The actuator shall be UL listed according to ANSI/UL 6073-1 and 6073-2-14 and plenum rated according to UL2043. Control input for the actuator shall utilize a 3-point triac input control signal and be capable of providing feedback indication of lower and upper end position. The actuator shall incorporate a gap and no load function to determine the upper and lower stem travel. The actuator shall have an external visual indication to monitor the actuator's travel.

*Description*

The AMV 120 NL- 1 is a gear motor actuator that is assembled to the AB-QM valves ranging from 1/2" to 1 1/4". The AMV actuator utilizes a 3-point floating input signal to adjust the valve to the necessary load requirement within the space. The compact profile of the actuator and valve are ideal for fan coil units, induction units, and zone heating and cooling terminal applications located in plenum locations or within enclosures. Other features include:

- Gap detection at stem up position
- Force switch-off at stem down position preventing overload of actuator.
- No tools required for mounting
- Maintenance free during lifetime
- Low noise operation
- Manual override

<b>Actuator Type</b>	AMV 120 NL- 1
<b>Code No.</b>	<b>082H5005</b>
Power Supply	24 VAC; +10%... -15%
Electrical Connection	1/2" electrical conduit, wiring terminal block
Power Consumption	1VA
Frequency	50/60 Hz
Control Input	3-point floating
Output Signal	End travel position feedback
Actuator Force	29.2 lbf (130N)
Max. Stem Travel	5mm
Travel Speed	12s/mm @ 50Hz, 10s/mm @ 60Hz
Max. Medium Temp.	248°F (120°C)
Ambient Temp.	32 to 131°F (0 to 55 °C)
Humidity	5 to 95% RH, noncondensing
Weight	0.66lb (0.3kg)

Regulatory Compliance:

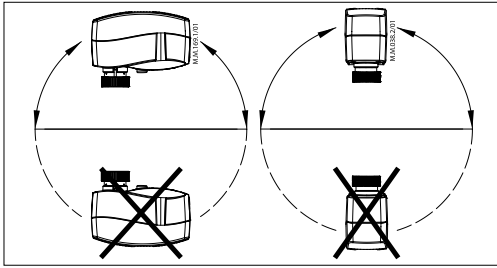
	<b>USA</b>	UL Listed, CCN XABE, File E480529; to ANSI/UL 60730-1 and ANSI/UL 60730-2-14
		Investigated and approved for plenum use in accordance with UL 2043
	<b>Canada</b>	UL Listed, CCN XABE7, File E48029; to CAN/CSA-E60730-1:13 and CAN/CSA-E60730-2-14:13
	<b>Europe</b>	CE Mark - Danfoss declares that this product complies with all relevant CE-marking directives

# Submittal

# AB-QM Pressure Independent Balance and Control Valve

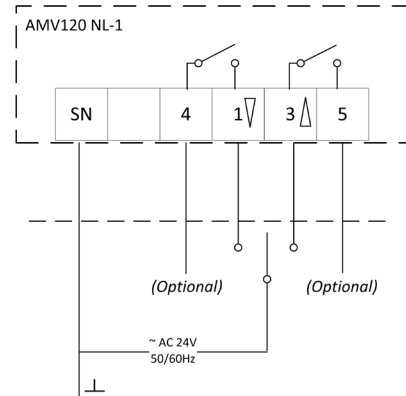


### Orientation

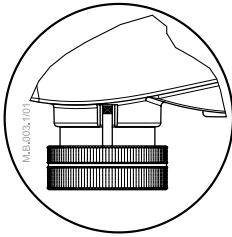


The actuator should be mounted with the valve stem in either horizontal position or pointing upwards. The actuator is fixed to the valve body by means of a threaded mounting ring which is tightened by hand and requires no additional tools. Mount the actuator prior to wiring it with power.

### Wiring

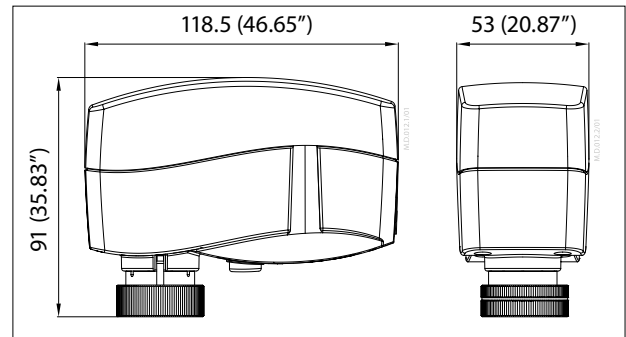


### Position Indication

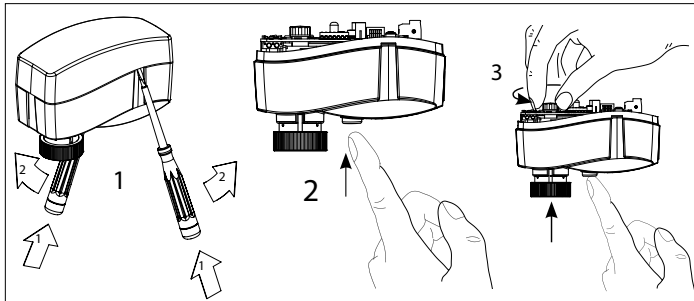


External position indication located at the neck of the motor actuator

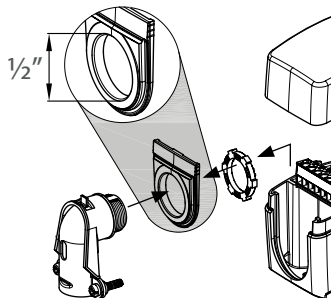
### Dimensions



### Manual Operation



### Wiring



A field supplied 1/2" trade size electrician's fitting and lock nut can be mounted to the actuator enclosure. Insert wiring material through the removable plug or conduit fitting, and wire connection to the terminal block.

Danfoss can accept no responsibility for possible errors in printed materials and reserves the right to alter its products without notice. All trademarks in this material are property of the respective companies. Danfoss and Danfoss logotype are trademarks of Danfoss A/S. All rights reserved.



**Danfoss**  
 Toronto, ON / Baltimore, MD  
 Tel.: 888.326.3677, option 3  
 Fax: 416-352-5981  
 www.heating.danfoss.us