



# Table of Contents

General Information .....	2
Functional Symbols .....	3
Model Codes .....	4
Technical Data .....	5
Flow Curves .....	5
Dimensions .....	6
Application Notes .....	7
Released Part Numbers .....	7

# General Information

## Features

- Subplate mounting
- Porting pattern to DIN 24 340, form E, ISO 6264, CETOP-RP 121H and NFPA/ANSI
- Three adjustment elements:
  - Rotary knob
  - Hex. head screw with protective cap
  - Lockable rotary knob with scale
- Solenoid operated unloading

## General

CG2V and CG5V pressure valves are pilot operated pressure relief valves. They are used for the

limitation (CG2V) or limitation and solenoid actuated unloading (CG5V) of the control pressure.

The pressure relief valves (CG2V) consist mainly of the main spool assembly (3) and pilot operated valve (2) with pressure adjustment element.

### Pressure relief valve type CG2V

The pressure present in port P acts on the main spool (3). At the same time pressure is applied via the control lines (6) and (7), which are fitted with orifices (4) and (5), on the spring loaded side of the main spool (3) and at the ball (8) in the

pilot control valve (2). If the pressure in port P exceeds the valve set at the spring (9), the ball (8) opens against the spring (9).

The signal for this comes internally via the control lines (10) and (6) from port P. The pressure fluid on the spring loaded side of the main spool (3) now flows via the control line (7), orifice bore (11) and ball (8) into the spring chamber (12). In type CG2V it flows internally via the control line (13) to tank, or in type CG2V...Y externally via the control line (14). Due to the orifices (4) and (5) a pressure drop occurs at the main spool (3), the connection from port P to port T is open.

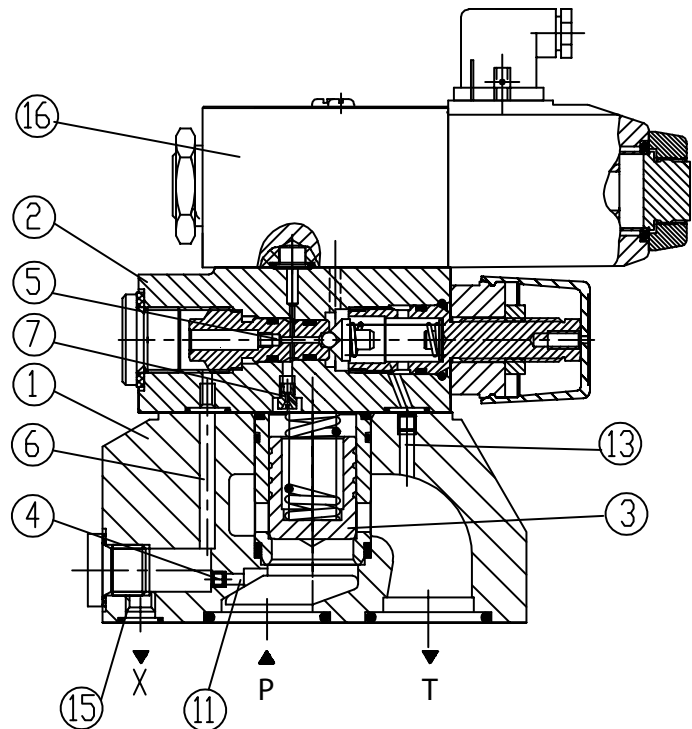
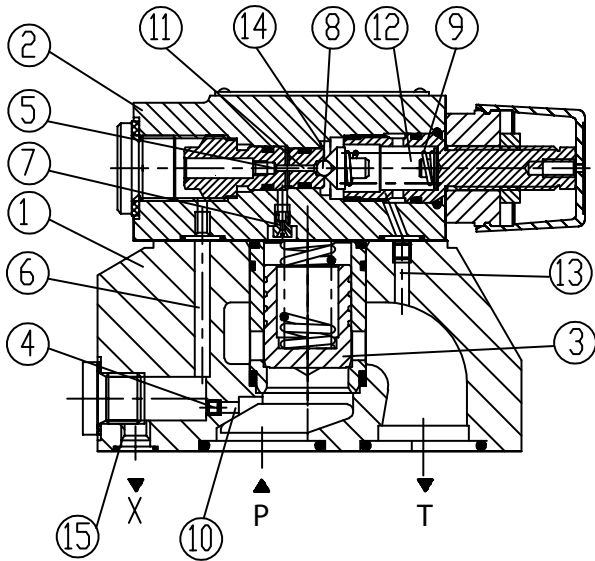
Now the pressure fluid flows from port P to port T whilst maintaining the set operating pressure.

The pressure relief valve may be unloaded or switched over to a different pressure (second pressure stage) via port X (15).

### Pressure relief valve type CG5V

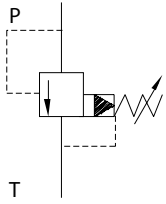
The function of this valve is basically same as the valve type CG2V.

The unloading at the main spool (3), however, is achieved by the built-in directional valve (16).

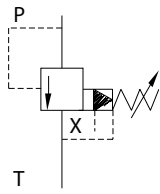


# Functional Symbols

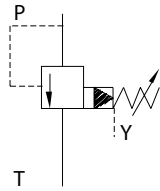
CG2V



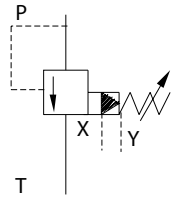
CG2V... X



CG2V... Y

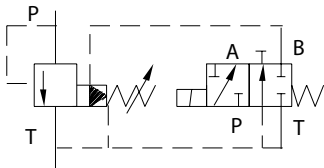


CG2V... XY



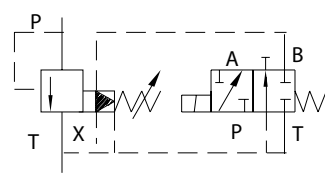
CG5V

Normally closed



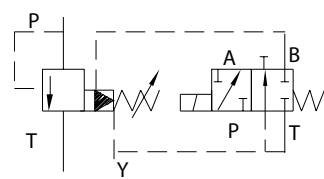
CG5V

Normally closed



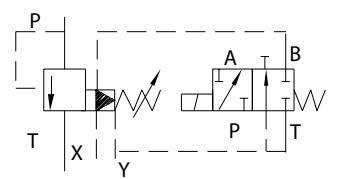
CG5V

Normally closed

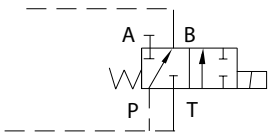


CG5V

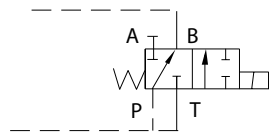
Normally closed



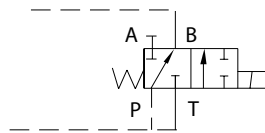
Normally open



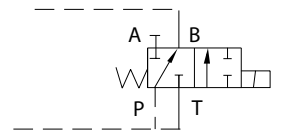
Normally open



Normally open



Normally open



# Series CG2V Model Code

(F3) CG2V 10 \* \* (\*) (\*) (\*) 10

1
2
3
4
5
6
7
8
9

**1** O-Ring Material

Blank – Nitrile  
F3 – Fluorocarbon

**2** Subplate Mounted Relief Valve

**3** Size

ISO6264-10  
NFPA/ANSIR10  
10 - Cetop 10

**4** Pressure Range

B – 50 bar  
C – 100 bar  
F – 200 bar  
G – 315 bar  
H – 350 bar

**5** Adjustment

W – Wrench and cover  
H – Knob  
K – Lockable knob

**6** Port Thread

F – Metric  
B – BSP

**7** Cracking Pressure

Blank – Standard  
U – Minimum (not available with 350 bar range)

**8** Pilot & Drain

Blank – Internal Pilot & Drain  
X – Internal Drain, External Pilot  
Y – Internal Drain, External Drain  
XY – External Pilot & Drain

**9** Design Number

10

# Series CG5V Model Code

(F3) CG5V 10 \* \* (\*) (U) (\*) (\*) 1 M U H7 10

1
2
3
4
5
6
7
8
9
10
11
12
13
14

**1** O-Ring Material

Blank – Nitrile  
F3 – Fluorocarbon

**2** Subplate Mounted Relief Valve with unloading function

**3** Size

ISO6264-10  
NFPA/ANSI R10  
10 - Cetop 10

**4** Pressure Range

B – 50 bar  
C – 100 bar  
F – 200 bar  
G – 315 bar  
H – 350 bar

**5** Adjustment

W – Wrench and cover  
H – Knob  
K – Lockable knob

**6** External Connection

F – Metric  
B – BSP

**7** Minimum Cracking Pressure

Blank – Standard  
U – Minimum Cracking Pressure (not available with 350 bar range)

**8** Pilot & Drain

Blank – Internal Pilot & Drain  
X – Internal Drain, External Pilot  
Y – Internal Pilot, External Drain  
XY – External Pilot & Drain

**9** Pilot Override

Blank – Manual Override  
Z – No Manual Override  
H – Weatherproof

**10** Valve State

1 – Normally Closed  
2 – Normally Open

**11** Flag

M

**12** Connector

U – No Connector  
U1 – Connector included  
U6 – Connector with lights  
FTWL – Box with lights and 1/2" NPT conduit thread

**13** Coil Voltage

H7 – 24 VDC  
G7 – 12 VDC  
B6 – 110V50Hz/120V60Hz  
D6 – 220V50Hz/240V60Hz

**14** Design Number

10

# Series CG2V Technical Data

## Hydraulic Technical Data

Maximum operating pressure at ports P, T, X (Bar)	up to 350 (port P, X); 315 (port T)	
Maximum back pressure at port Y	CG2V (Bar) CG5V (Bar)	up to 315 up to 210
Pressure Range	Minimum (Bar) Maximum (Bar)	flow dependent (see flow curves ) 50, 100, 200, 315, 350
Weight	CG2V CG5V	4.4 Kg 5.6 Kg
Maximum Flow	650 Lpm	
Fluid	Mineral oil (for Nitrile seal) or phosphate ester (for Fluorocarbon seal)	
Fluid temperature range(°C)	-30 to + 80 (Temperature limit for DG4V3 is 70°C)	
Fluid Viscosity range (mm <sup>2</sup> /s)	10 to 800	
Fluid Cleanliness Level	ISO 19/17/14	

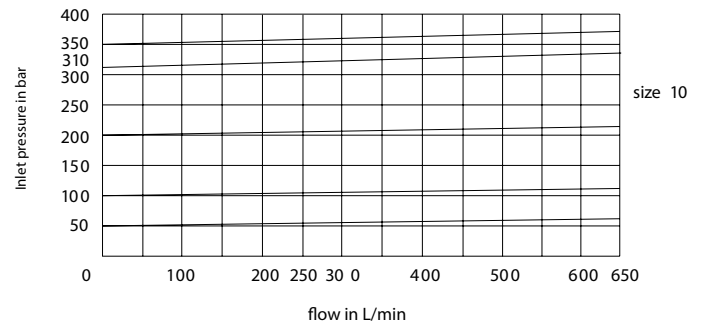
Flow Curves  
(measured at  $v = 41$   
mm<sup>2</sup>/s and  $t = 50^\circ\text{C}$ )

The characteristic curves were measured with pilot externally drained.

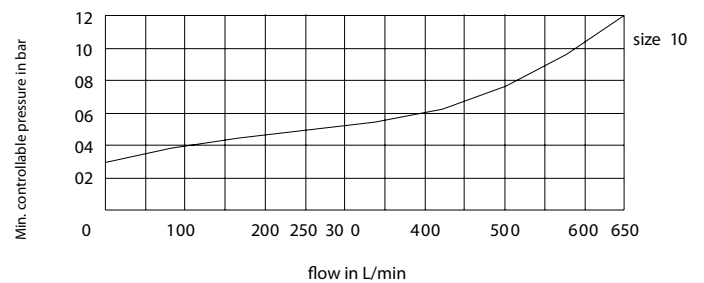
For internal pilot oil drain the inlet pressure increase by the outlet pressure present at port T.

\*The characteristic curves are valid for outlet pressure  $T = 0$  over the entire flow range!

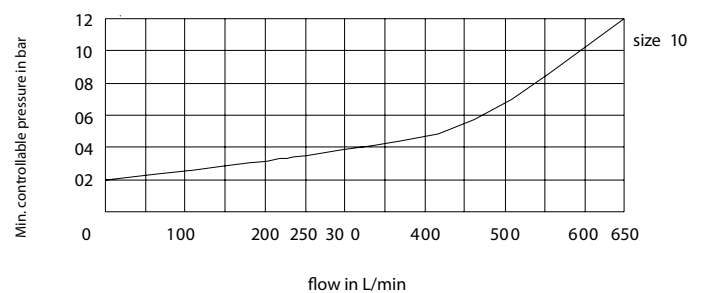
Inlet pressure vs. flow



Minimum controllable pressure and bypass pressure in relation to the flow.\*

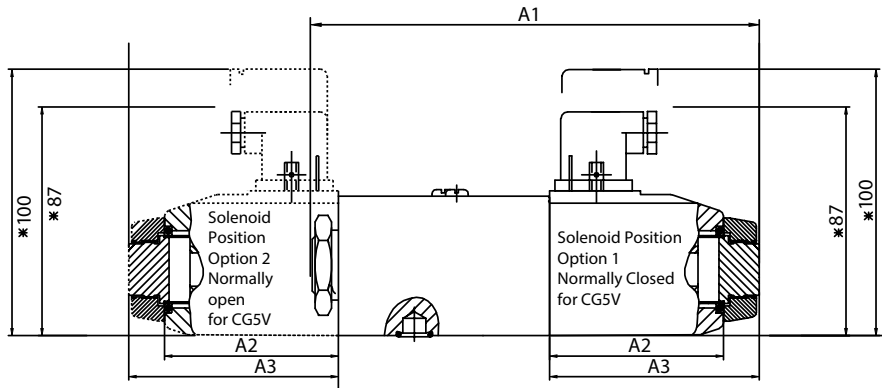


Minimum controllable pressure and bypass pressure in relation to the flow Version U\*



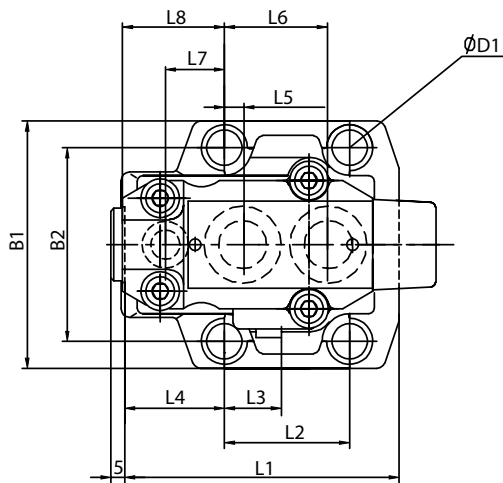
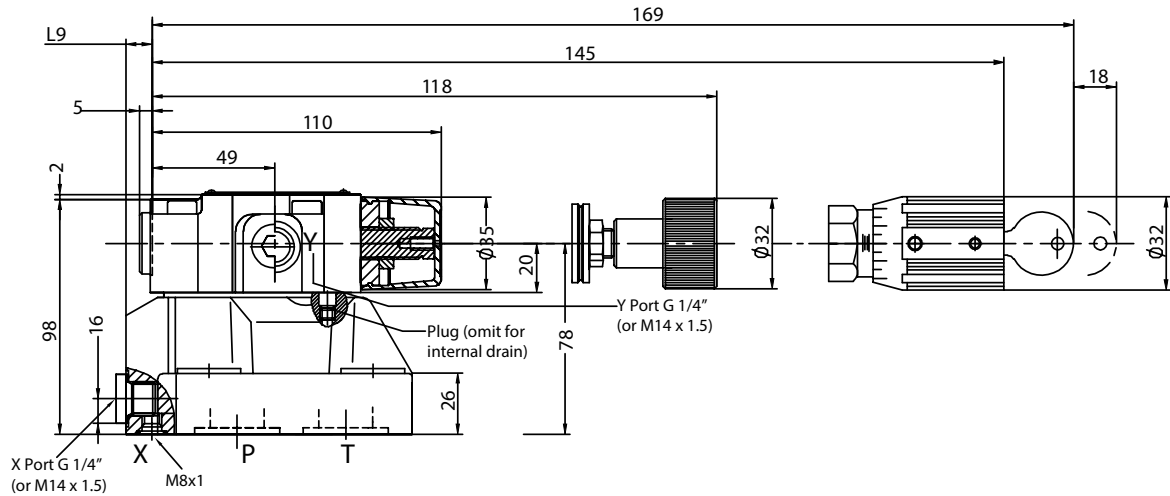
# CG2V/CG5V

## Dimensions mm (inch)

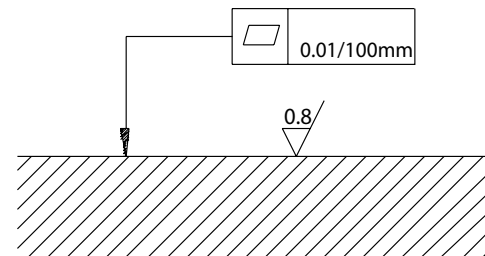


Coil	AC	DC
A1	161 (6.34)	151 (5.95)
A2	61 (2.4)	51 (2.0)
A3	73 (2.87)	63 (2.48)

\* This dimension can vary depend on source of plug ("U" option); See DG4V-3 Catalog for "FTWL" option.



Required surface finish of mating face



Type	L1	L2	L3	L4	L5	L6	L7	L8	L9	B1	B2	ØD1	Ports P/T	Port X
CG2V/CG5V-10	147.5 (5.81)	88.9 (3.5)	44.5 (1.75)	41 (1.61)	12.7 (0.5)	76.2 (3.0)	31.8 (1.27)	20 (0.79)	21 (0.83)	115 (4.53)	82.6 (3.25)	20 (0.79)	34.52 x 3.53 (1.36 x 0.14)	9.25 x 1.78 (0.36 x 0.07)

# Application Notes

1. The fluid must be filtered. The required fluid cleanliness level is ISO 19/17/14
2. Surface finish of mating piece is required to 0.01/100mm.
3. Interface Seal Kit # for  
CG2V/5V-10  
02-412610, Nitrile  
02-412609, Fluorocarbon
4. Bolt kit for CG2V/5V-10  
(4) M18x50 (1.97 inch)  
(4) 3/4" 10x2" UNC  
MA=430Nm (317 lb-ft)
5. Mounting bolts must be to DIN 912-10.9 class, or Class 12.9 (ISO 898)

## Released Part Numbers

### CG2V-10 Released Part Numbers

Assembly Number	Model Code
02-412579	CG2V-10-B-W-B-U-10
02-412580	CG2V-10-F-W-B-10
02-412581	CG2V-10-G-W-B-U-10
02-412582	CG2V-10-G-W-B-10
02-412583	CG2V-10-H-W-B-10
02-412584	CG2V-10-F-W-B-Y-10

Bold items have better lead-time

### CG5V-10 Released Part Numbers

Assembly Number	Model Code
02-412649	CG5V-10-B-W-B-U-2-M-U-H7-10
02-412650	CG5V-10-G-W-B-1-M-U-H7-10
02-412651	CG5V-10-G-W-B-2-M-U-H7-10
02-412652	CG5V-10-H-W-B-2-M-U-H7-10
02-412653	CG5V-10-F-W-B-1-M-U-H7-10
02-412654	CG5V-10-F-W-B-2-M-U-H7-10

Bold items have better lead-time







### Products we offer:

- Cartridge valves
- DCV directional control valves
- Electric converters
- Electric machines
- Electric motors
- Gear motors
- Gear pumps
- Hydraulic integrated circuits (HICs)
- Hydrostatic motors
- Hydrostatic pumps
- Orbital motors
- PLUS+1® controllers
- PLUS+1® displays
- PLUS+1® joysticks and pedals
- PLUS+1® operator interfaces
- PLUS+1® sensors
- PLUS+1® software
- PLUS+1® software services, support and training
- Position controls and sensors
- PVG proportional valves
- Steering components and systems
- Telematics

**Danfoss Power Solutions** is a global manufacturer and supplier of high-quality hydraulic and electric components. We specialize in providing state-of-the-art technology and solutions that excel in the harsh operating conditions of the mobile off-highway market as well as the marine sector. Building on our extensive applications expertise, we work closely with you to ensure exceptional performance for a broad range of applications. We help you and other customers around the world speed up system development, reduce costs and bring vehicles and vessels to market faster.

Danfoss Power Solutions – your strongest partner in mobile hydraulics and mobile electrification.

### Go to [www.danfoss.com](http://www.danfoss.com) for further product information.

We offer you expert worldwide support for ensuring the best possible solutions for outstanding performance. And with an extensive network of Global Service Partners, we also provide you with comprehensive global service for all of our components.

Local address:

### Hydro-Gear

[www.hydro-gear.com](http://www.hydro-gear.com)

### Daikin-Sauer-Danfoss

[www.daikin-sauer-danfoss.com](http://www.daikin-sauer-danfoss.com)

**Danfoss  
Power Solutions (US) Company**  
2800 East 13th Street  
Ames, IA 50010, USA  
Phone: +1 515 239 6000

**Danfoss  
Power Solutions GmbH & Co. OHG**  
Krokamp 35  
D-24539 Neumünster, Germany  
Phone: +49 4321 871 0

**Danfoss  
Power Solutions ApS**  
Nordborgvej 81  
DK-6430 Nordborg, Denmark  
Phone: +45 7488 2222

**Danfoss  
Power Solutions Trading  
(Shanghai) Co., Ltd.**  
Building #22, No. 1000 Jin Hai Rd  
Jin Qiao, Pudong New District  
Shanghai, China 201206  
Phone: +86 21 2080 6201

Danfoss can accept no responsibility for possible errors in catalogues, brochures and other printed material. Danfoss reserves the right to alter its products without notice. This also applies to products already on order provided that such alterations can be made without subsequent changes being necessary in specifications already agreed. All trademarks in this material are property of the respective companies. Danfoss and the Danfoss logotype are trademarks of Danfoss A/S. All rights reserved.