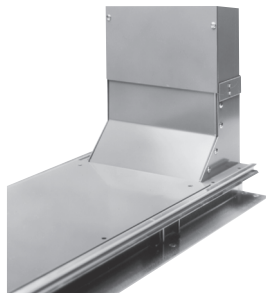


Section 13

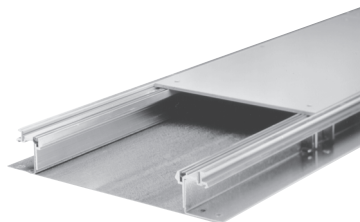
Wire Management



Wireway



Wall Duct



Trench Duct

Wireway	13-2
<hr/>	
General Purpose—NEMA Type 1	13-2
Oiltight—NEMA Type 12	13-3
Raintight Wireway—NEMA Type 3R	13-4
Raintight Trough—NEMA Type 3R	13-4
Wall Duct	13-5
<hr/>	
Wall Duct General Description	13-5
Components and Accessories	13-5
Wall Duct Accessories	13-6
Trench Duct	13-7
<hr/>	
Trench Duct General Description	13-7
Trench Duct Fittings	13-7
Accessories and Components	13-8

General Purpose—NEMA Type 1

For more information on Wireway, refer to Catalog [5100CT0101](#).

Standards

Square-Duct wireway is Underwriters Laboratories listed as steel enclosed wireway and auxiliary gutter. CSA listing is also available.



Painted Hinge-Cover
Type LDB—ANSI 49 Gray
Polyester Powder Finish

Sizes

2-1/2", 4", and 6" sizes are manufactured from 16 gauge steel. Straight lengths are available with or without knockouts. Knockouts are of various sizes in sides and bottom of wireway. 8", 10", and 12" sizes are made of 14 gauge steel and are furnished without knockouts.

Table 13.1: General Purpose (Connectors not supplied; order separately) [1] [2] [3]

Component	2-1/2" x 2-1/2"		4" x 4"		6" x 6"		8" x 8"	10" x 10"	12" x 12"[4]
	Catalog Number		Catalog Number		Catalog Number		Cat. No.	Cat. No.	Cat. No.
	With Knockouts	Without Knockouts	With Knockouts	Without Knockouts	With Knockouts	Without Knockouts	Without Knockouts	Without Knockouts	Without Knockouts
1' Length	LDB21KO	LDB21	LDB41KO	LDB41	LDB61KO	LDB61	LDB81	LDB101	LDB121
2' Length	LDB22KO	LDB22	LDB42KO	LDB42	LDB62KO	LDB62	LDB82	LDB102	LDB122
3' Length	LDB23KO	LDB23	LDB43KO	LDB43	LDB63KO	LDB63	LDB83	LDB103	LDB123
4' Length	LDB24KO	LDB24	LDB44KO	LDB44	LDB64KO	LDB64	LDB84	LDB104	LDB124
5' Length	LDB25KO	LDB25	LDB45KO	LDB45	LDB65KO	LDB65	LDB85	LDB105	LDB125
6' Length	—	—	LDB46KO	LDB46	LDB66KO	LDB66	LDB86	LDB106	—
10' Length	LDB210KO	LDB210	LDB410KO	LDB410	LDB610KO	LDB610	LDB810	LDB1010	LDB1210
90° L	—	LDB290L	—	LDB490L	—	LDB690L	LDB890L	LDB1090L	LDB1290L
90° Sweep L	—	LDB290LS	—	LDB490LS	—	LDB690LS	LDB890LS	LDB1090LS	LDB1290LS
45° L	—	LDB245L	—	LDB445L	—	LDB645L	LDB845L	LDB1045L	LDB1245L
Tee	—	LDB2T	—	LDB4T	—	LDB6T	LDB8T	LDB10T	LDB12T
Junction Box	—	LDB2J	—	LDB4J	—	LDB6J	LDB8J	LDB10J	LDB12J
Telescope Ftg.	—	LDB2TF	—	LDB4TF	—	LDB6TF	LDB8TF	LDB10TF	LDB12TF
Connector[3]	—	LDB2C	—	LDB4C	—	LDB6C	LDB8C	LDB10C	LDB12C
Drop/Brkt Hgr.	—	LDB2H	—	LDB4H	—	LDB6H	LDB8H	LDB10H	LDB12H
Support Hanger	—	LDB2SH	—	LDB4SH	—	LDB6SH	LDB8SH	LDB10SH	LDB12SH
Closing Plate	LDB2CPKO	LDB2CP	LDB4CPKO	LDB4CP	LDB6CPKO	LDB6CP	LDB8CP[5]	LDB10CP[5]	LDB12CP[5]
Panel Adapter	—	LDB2A	—	LDB4A	—	LDB6A	LDB8A	LDB10A	LDB12A
Open Adapter	—	LDB2OA	—	LDB4OA	—	LDB6OA	LDB8OA	LDB10OA	LDB12OA
Reducer	—	—	—	LDB42R	—	LDB64R	LDB86R	LDB108R	LDB1210R
	—	—	—	—	—	—	—	—	LDB128R
Adapter to "LD"[6]	—	LDB2GASK	—	LDB4GAS	—	LDB6GAS	LDB8GASK	LDB10GASK	—
Barrier Kit—5 ft. long w/hardware	—	—	—	LJB45B	—	LJB65B	LJB85B	—	—
5 pc. Barrier Pack—5 ft. long	—	—	—	LJB45BKM	—	LJB65BKM	—	—	—
5 pc. Barrier Bracket—2 compartment	—	—	—	LJB4BB2C	—	LJB6BB2C	—	—	—
5 pc. Barrier Bracket—3 compartment	—	—	—	LJB4BB3C	—	LJB6BB3C	—	—	—

[1] Some products may be discontinued. Refer to [Busway and Cable Management](#) online for current information.

[2] For wireway fill information, see NEC 376.

[3] Add connectors for all lengths and fittings, except closing plates, reducers, and adapters.

[4] Painted 12" x 12" wireway is not furnished with hinge-cover (screw-cover only).

[5] These closing plates also available with knockout. Add "KO" to cat #.

[6] Adapters to competitors' wireways also available. Contact your nearest Schneider Electric sales office for availability.



Oiltight—NEMA Type 12

Type LJB Oiltight lay-in wireway is fully gasketed and used to protect runs of electrical wiring from oil, water, coolants, dirt, or dust as well as physical damage. This wireway is manufactured to exceed oiltight and NFPA standards for industrial control equipment. Lengths and fittings are made of 14 gauge steel with 10 gauge end flanges. Straight lengths and fittings have hinged covers with oil resistant gasket all around and are held closed with pull-down latches. All lengths and fittings are without knockouts. Type LJB lay-in Wireway is finished with ANSI-49 gray polyester powder finish over a corrosion resistant phosphate preparation. All Type LJB oiltight wireway is UL listed as steel enclosed wireway and auxiliary gutter. Conforms to NEMA Type 12.

Table 13.2: Type LJB Lay-in [7] [8]

Description	2-1/2" x 2-1/2"	4" x 4"	6" x 6"	8" x 8"	12" x 6"
	Catalog No.	Catalog No.	Catalog No.	Catalog No.	Catalog No.
1" Nipple	LJB201	LJB401	LJB601	—	—
2" Nipple	LJB202	LJB402	LJB602	—	—
3" Nipple	LJB203	LJB403	LJB603	—	—
6" Length	LJB206	LJB406	LJB606	—	—
1' Length	LJB21	LJB41	LJB61	LJB806	LJB12606
2' Length	LJB22	LJB42	LJB62	LJB82	LJB1262
3' Length	LJB23	LJB43	LJB63	LJB83	LJB1263
4' Length	LJB24	LJB44	LJB64	LJB84	LJB1264
5' Length	LJB25	LJB45	LJB65	LJB85	LJB1265
10' Length [9]	LJB210	LJB410	LJB610	LJB810	LJB12610
45° Top Opening	LJB245LT	LJB445LT	LJB645LT	LJB845LT	LJB12645LT
45° Inside Opening	LJB245LI	LJB445LI	LJB645LI	LJB845LI	—
45° Outside Opening	LJB245LO	LJB445LO	LJB645LO	LJB845LO	—
90° Inside Opening	LJB290LI	LJB490LI	LJB690LI	LJB890LI	LJB12690LI
90° Outside Opening	LJB290LO	LJB490LO	LJB690LO	LJB890LO	LJB12690LO
90° Outside Top Opening	—	LJB490LOT	LJB690LOT	LJB890LOT	—
90° Top Opening	LJB290LT	LJB490LT	LJB690LT	LJB890LT	LJB12690LT
Tee—Top Opening	LJB2TT	LJB4TT	LJB6TT	LJB8TT	LJB126TT
Tee—Outside Opening	LJB2TO	LJB4TO	LJB6TO	LJB8TO	—
Cross	LJB2X	LJB4X	LJB6X	LJB8X	LJB126X
Junction Box	LJB2JB	LJB4JB	LJB6JB	LJB8JB	—
Telescopic Fitting	LJB2TF	LJB4TF	LJB6TF	LJB8TF	LJB126TF
Closing Plate	LJB2CP	LJB4CP	LJB6CP	LJB8CP	LJB126CP
Panel Adapter	LJB2A	LJB4A	LJB6A	LJB8A	LJB126A
Bracket Hanger	LJB2BH	LJB4BH	LJB6BH	LJB8BH	—
Drop Hanger	LJB2DH	LJB4DH	LJB6DH	LJB8DH	—
Extra Connector Kit [8]	LJB2C	LJB4C	LJB6C	LJB8C	LJB126C
90° Connector	LJB290C	LJB490C	LJB690C	LJB890C	LJB12690C
Reducer to 2"	—	LJB42R	—	—	—
Reducer to 4"	—	—	LJB64R	—	LJB1264R
Reducer to 6"	—	—	—	LJB86R	LJB1266R
Cut-off fitting—not Lay-in	LJB2CF	LJB4CF	LJB6CF	LJB8CF	LJB126CF
Cut-off fitting—Lay-in	LJB2CFL	LJB4CFL	LJB6CFL	LJB8CFL	LJB126CFL
Transposition Fitting—CCW (Str)	LJB21CCW	LJB41CCW	LJB61CCW	—	—
Transposition Fitting—CW (Str)	LJB21CW	LJB41CW	LJB61CW	—	—
Transposition Elbow—CCW	LJB290LCCW	LJB490LCCW	LJB690LCCW	LJB890LCCW	—
Transposition Elbow—CW	LJB290LCW	LJB490LCW	LJB690LCW	LJB890LCW	—
Swivel fitting—Wireway to Wireway	LJB2S	LJB4S	LJB6S	LJB8S	—
Swivel fitting—Wireway to Box	LJB2SB	LJB4SB	LJB6SB	LJB8SB	—
Flex Fitting—Feed Through	LJB2FF	LJB4FF	LJB6FF	LJB8FF	—
Barrier Kit—5 ft. long w/hardware	—	LJB45B	LJB65B	LJB85B	LJB65B
5 pc. Barrier Pack—5 ft. long	—	LJB45BKM	LJB65BKM	—	—
5 pc. Barrier Bracket—2 compartment	—	LJB4BB2C	LJB6BB2C	—	—
5 pc. Barrier Bracket—3 compartment	—	LJB4BB3C	LJB6BB3C	—	—

[7] Some products may be discontinued. Refer to [Busway and Cable Management](#) online for current information.

[8] Connector kit furnished with each length and fitting.

[9] 10 foot straight lengths UL listed for up to 10 foot hanger spacing.

Raintight Wireway—NEMA Type 3R

Outdoor raintight wireway is used to protect electrical wiring against rain, sleet, and physical damage. Unique drip shield cover protects wiring from weather and maintains the “lay-in” feature for ease of wiring installation. Lengths and fittings are constructed of 16 gauge galvanized steel with ANSI-49 gray polyester powder finish over a corrosion resistant phosphate preparation. Underwriters Laboratories Listed as steel enclosed wireway and auxiliary gutter (*horizontal mounting only*). Conforms to NEMA Type 3R.

Table 13.3: Raintight Wireway [10]

Description ^[11]	4" x 4"	6" x 6"	8" x 8"
	Catalog Number	Catalog Number	Catalog Number
1' Length	LDRB41M	LDRB61M	LDRB81M
5' Length	LDRB45M	LDRB65M	LDRB85M
10' Length	LDRB410M	LDRB610M	LDRB810M
90° L	LDRB490L	LDRB690L	LDRB890L
30° Sweep L	LDRB430SE	LDRB630SE	LDRB830SE
Tee	LDRB4T	LDRB6T	LDRB8T
Junction Box	LDRB4J	LDRB6J	LDRB8J
Panel Adapter	LDRB44A	LDRB66A	LDRB88A
Connector ^[11]	LDRB4C	LDRB6C	LDRB8C
Closing Plate	LDRB4CP	LDRB6CP	LDRB8CP
Drop Hanger	LDRB4DH	LDRB6DH	LDRB8DH
Wall Hanger	LDRB4WH	LDRB6WH	LDRB8WH
Reducer	—	LDRB64R	LDRB86R

Raintight Trough—NEMA Type 3R

Raintight trough is designed for ganging meter devices, panelboards, switches, and circuit breaker enclosures. Each length is a completely enclosed section with a removable cover that has provisions for sealing.

Design: 4" and 6" wireway is constructed of 16 gauge galvanized steel. 8", 10", and 12" wireway is constructed of 14 gauge galvanized steel. All raintight troughs conform to NEMA Type 3R.

Finish: ANSI-49 gray polyester powder finish over a corrosion resistant phosphate preparation. All raintight troughs are Underwriters Laboratories listed as steel enclosed wireway and auxiliary gutter (*horizontal mounting only*).

Table 13.4: Raintight Trough [10]

Length	4" x 4"	6" x 6"	8" x 8"	10" x 10"	12" x 12"
	Cat. No.	Cat. No.	Cat. No.	Cat. No.	Cat. No.
1'	RDB41	RDB61	—	—	—
2'	RDB42	RDB62	RDB82	RDB102	RDB122
3'	RDB43	RDB63	RDB83	RDB103	RDB123
4'	RDB44	RDB64	RDB84	—	—
5'	RDB45	RDB65	RDB85	RDB105	RDB125
6'	—	RDB66	RDB86	RDB106	RDB126

[10] Some products may be discontinued. Refer to [Busway and Cable Management](#) online for current information.

[11] Add connectors for all lengths and fittings.

Wall Duct General Description

UL Listed, File E65247, for Enclosure of Wiring to X-Ray Machines. Also available in aluminum for MRI application.

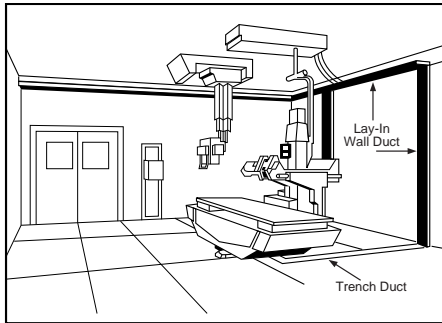
Wall duct is used as the continuation for standard trench duct in the floor. Wall duct can be routed up the wall and across the ceiling or under the finished floor (in ceiling space below) to provide a continuous lay-in raceway system from control consoles and floor equipment to overhead apparatus. Devices are furnished complete with covers and are available for either flush or surface mounted installations.



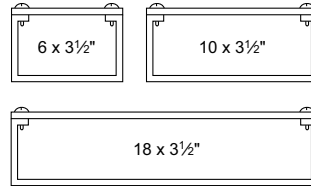
Typical Surface Mount, Straight-Length Wall Duct

General Notes:

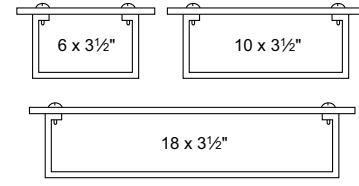
- Standard construction is 14 gauge steel with gray electrodeposition paint. Alternate construction is painted aluminum.
- Covers and coupling devices are furnished with each device.
- Wire retainers are furnished with each device.
- Straight lengths are field cut to length.
- Partitions and tunnels are to be field modified and installed where required.
- Hangers or other mounting devices to be furnished by others.



With SURFACE Covers (Matching Width)



With FLUSH Covers (2" Oversize)



Components and Accessories

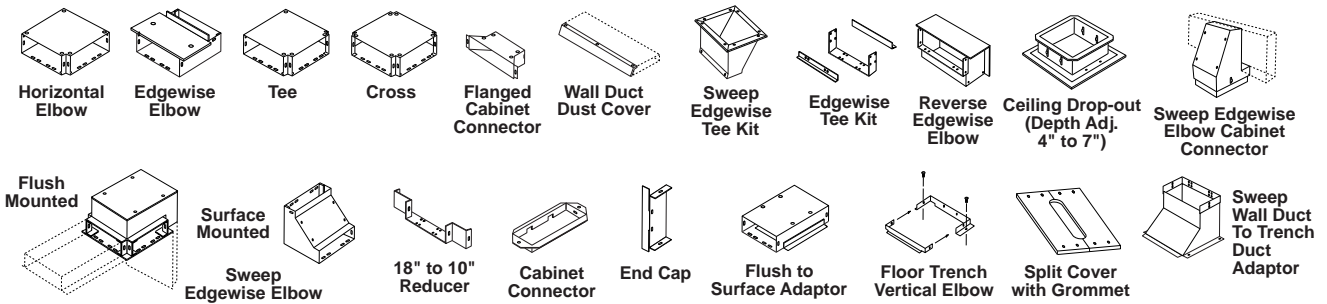


Table 13.5: Lay-In Wall Duct Components [1] [2]

Component		Flush Cover		Surface Cover	
		Catalog Number	Weight Lbs.	Catalog Number	Weight Lbs.
5'-0" Straight Length With Cover	6"W	RWT06S60	22.5	RWT06S60S	20.4
	10"W	RWT10S60	39.2	RWT10S60S	36.4
	18"W	RWT18S60	62.2	RWT18S60S	59.4
1'-6" Straight Length With Cover	6"W	RWT06S18	12.6	RWT06S18S	12.6
	10"W	RWT10S18	16.4	RWT10S18S	16.3
	18"W	RWT18S18	23.3	RWT18S18S	23.3
Horizontal Elbow With Cover—90°	6"W	RWT06HE	6.5	RWT06HES	6.0
	10"W	RWT10HE	9.3	RWT10HES	8.1
	18"W	RWT18HE	24.9	RWT18HES	23.7
Horizontal Elbow With Cover—45°	6"W	—	—	RWT06HE45S	6.0
	10"W	—	—	RWT10HE45S	8.1
	18"W	—	—	RWT18HE45S	23.7
Edgewise Elbow With Cover	6"W	RWT06EE	5.5	RWT06EES	5.5
	10"W	RWT10EE	7.5	RWT10EES	7.4
	18"W	RWT18EE	11.1	RWT18EES	11.0
Tee With Cover	6"W	RWT06TE	6.2	RWT06TES	5.9
	10"W	RWT10TE	8.5	RWT10TES	7.3
	18"W	RWT18TE	24.1	RWT18TES	22.9
Cross With Cover	10"W	RWT10XE	1.3	RWT10XES	6.2
	18"W	RWT18XE	1.8	RWT18XES	21.8
Flanged Cabinet Connector With Cover	10"W	RWT10CUC	8.0	RWT10CUCS	7.8
Reverse Edgewise Elbow With Cover	6"W	RWT06REE	5.8	RWT06REES	5.7
	10"W	RWT10REE	7.5	RWT10REES	7.4
	18"W	RWT18REE	11.1	RWT18REES	11.0
Sweep Edgewise Elbow With Cover	6"W	—	10.0	RWT06SSEES	4.8
	10"W	RWT10SFEE	12.0	RWT10SSEES	11.8
	18"W	RWT18SFEE	16.5	RWT18SSEES	16.3
Sweep Edgewise Elbow Cabinet Connector	10"W	—	—	RWT10SWECC	14.0
	18"W	—	—	RWT18SWECC	20.0

[1] Some products may be discontinued. Refer to [Busway and Cable Management](#) online for current information.

[2] All devices available in aluminum. Add "A" suffix to the catalog number.

Wall Duct Accessories

Table 13.6: Lay-In Wall Duct Accessories [3] [4]

Accessories		Catalog Number	Weight Lbs.
5'-0" Partition		RWTP60	5.4
Straight through tunnel for tees [5]	10"W	RWT10ST	2.9
	18"W	RWT18ST	3.8
90° Elbow tunnel for crosses [5]	10"W	RWT10ET	3.2
	18"W	RWT18ET	5.1
3 compartment tunnel for tees	10"W	RWT10PTE	5.0
	18"W	RWT18PTE	6.0
3 compartment tunnel for crosses	10"W	RWT10PXE	8.0
	18"W	RWT18PXE	9.0
Edgewise Tee Kit	10"W	RWT10ETK	1.3
	18"W	RWT18ETK	2.1
Sweep Edgewise Tee Kit	10"W	RWT10SWET	8.0
	18"W	RWT18SWET	8.0
Flush to Surface Adaptor	10"W	RWT10FS	11.9
	18"W	RWT18FS	16.4
Ceiling Drop-Out		RWTCDO	15.0
Extra Coupling Device 10"W 18"W	10"W	RWT10COUP	.4
	18"W	RWT18COUP	.5
Extra Straight Cover—30" long (Order 2 pcs. for 5 ft. of duct.)	Flush 10"W	RWT10SCOV	7.2
	Flush 18"W	RWT18SCOV	13.0
	Surface 10"W	RWT10SCOVs	6.1
	Surface 18"W	RWT18SCOVs	11.8

Table 13.7: Wall Duct Accessories [3] [4]

Accessories		Catalog Number	Weight Lbs.
Reducer Coupling	18" to 10"	RWTRC	2.1
	10" to 6"	RWT06RC	1.6
Cabinet Connector	6"W	RWT06CC	1.0
	10"W	RWT10CC	1.3
	18"W	RWT18CC	2.4
End Cap	6"W	RWT06EC	1.0
	10"W	RWT10EC	1.3
	18"W	RWT18EC	1.8
Vertical Elbows for:	6" Trench to 6" Wall Duct	RWT06FTVE06	1.1
	12" Trench to 10" Wall Duct	RWT10FTVE12	1.2
	12" Trench to 18" Wall Duct	RWT18FTVE12	1.2
	18" Trench to 10" Wall Duct	RWT10FTVE18	1.3
	18" Trench to 18" Wall Duct	RWT18FTVE18	1.3
Sweep Trench Duct to Wall Duct Adapter (available in surface cover only)	12" Trench to 10" Wall Duct	RWT10SWFTVE12	10.0
	18" Trench to 18" Wall Duct	RWT18SWFTVE18	14.0
Split Cover with Grommet 12" long—3"x 8" Opening	Flush 6"W	RWT06ACP	2.6
	Flush 10"W	RWT10ACP	3.1
	Flush 18"W	RWT18ACP	4.8
	Surface 6"W	RWT06ACPS	2.0
	Surface 10"W	RWT10ACPS	2.7
	Surface 18"W	RWT18ACPS	4.0
Dust Cover—5 ft. long		RWTDCOV60	5.5
Grommet—100 ft. roll		RWTBG100	

[3] Some products may be discontinued. Refer to [Busway and Cable Management](#) online for current information.

[4] All devices available in aluminum. Add "A" suffix to the catalog number.

[5] Tunnels form a 3 in. wide compartment.

Trench Duct General Description

- STANDARD LENGTH of trench duct is 10 ft. Gasketed cover plates are ordered and shipped separately.
- FEATURES of trench duct:
 - Trench duct width is cover plate width.
 - Tub width is trench duct width less 1.8".
 - Overall width (bottom flange to flange) is 3" wider than trench duct width.
 - Standard depth is adjustable from 2-3/8" to 3-3/8". Also available as standard is depth adjustable from 3" to 4". To order, change "2" to "3". Ex. RSV063100120. Applies to trench duct, elbows, crosses, tees, and reducers. Other depths available.
 - Tees, crosses, horizontal elbows, and reducers are shipped complete with cover plates assembled.
 - Grey vinyl tile trim is furnished as standard. Aluminum is available when requested.
 - All compartments over 17" wide must be supported with dividers or posts.

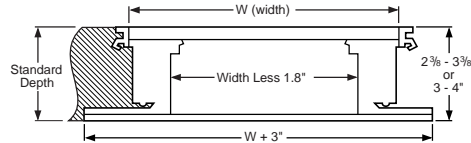
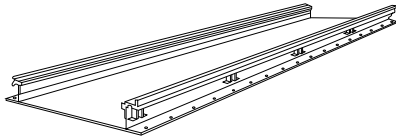


Table 13.8: Assembled Trench Duct [1]

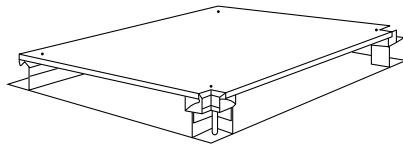
Straight Sections	Trench Duct			
	Length	Width	Catalog Number	
Full Length	10'-0"	6"	RSV062100120	
		9"	RSV092100120	
		12"	RSV122100120	
		18"	RSV182100120	
		24"	RSV242100120	
		30"	RSV302100120	
	Covers Only (5 Plates per 10' Length) [2]			
	24"	6"	RCP0624	
		9"	RCP0924	
		12"	RCP1224	
12"	18"	RCP1824		
	24"	RCP2424		
Factory Cut-to-Length (12" Wide Only)	6'-0" 4'-3- 1/2" 3'-3- 1/2" 2'-0" 1'-0" 0'-3-1/2"	12"	RSV122100072	
		12"	RSV122100051.5	
		12"	RSV122100039.5	
		12"	RSV122100024	
		12"	RSV122100012	
	12"	RSV122100003.5		
	3-24" Long Covers [3] 2-24" Long Covers & 1 - Wall Duct Vertical Elbow [3] 1-24" & 1-12" Long Cover & 1-Wall Duct Vertical Elbow [3] 1-24" Long Cover [3] 1-12" Long Cover [3] 1-Wall Duct Vertical Elbow [3]			

Trench Duct Fittings

Table 13.9: Trench Duct Fittings



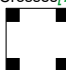
Item	Width [4]	Catalog No.
End Closures [5]	6" 9" 12" 18" 24" 30"	REC06 REC09 REC12 REC18 REC24 REC30
Vertical Elbows	6" 9" 12" 18" 24" 30"	RVE06 RVE09 RVE12 RVE18 RVE24 RVE30
Riser and Cabinet Connector (Removable Front)	6" 9" 12" 18" 24" 30"	RRC06 RRC09 RRC12 RRC18 RRC24 RRC30
Z-Divider 5'-0" [5] Adjustable Barrier and Support Strip		RZD60
Tape for Trench Duct (180 ft. rolls)		G1414
Marker for Cellular Floor		G1426

[1] Some products may be discontinued. Refer to [Busway and Cable Management](#) online for current information.
 [2] Straight length cover plates are shipped separately and must be ORDERED SEPARATELY.
 [3] Covers and/or vertical elbows for connecting trench duct to lay-in wall duct—ORDER SEPARATELY.
 [4] All devices through 18" width are available in aluminum. Height is factory-set to customer specifications from 2-1/2 to 4 inches. (Non-Adjustable)
 [5] For 3 in. to 4 in. trench duct, add a "3" to end of catalog number.



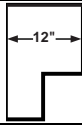
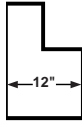
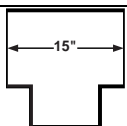
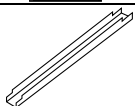
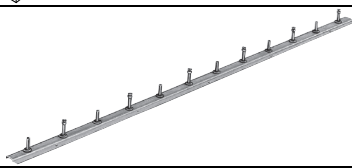
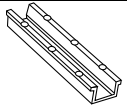
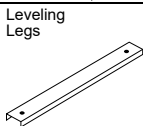

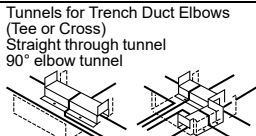
Tee

Table 13.10: Trench Duct Elbows, Tees, and Crosses [6]

Item	Complete Device	
	Width	Catalog Number
90° Horizontal Elbows 	6"	RHV06210009
	9"	RHV092100012
	12"	RHV122100015
	18"	RHV182100021
	24"	RHV242100027
30"	RHV302100033	
45° Horizontal Elbow [7]	12"	RHV12245
Tees [7] 	6"	RTV062100011
	9"	RTV092100014
	12"	RTV122100017
	18"	RTV182100023
	24"	RTV242100029
30"	RTV302100035	
Crosses [7] 	6"	RXV062100012
	9"	RXV092100015
	12"	RXV122100018
	18"	RXV182100024
	24"	RXV242100030
30"	RXV302100036	

Accessories and Components

Table 13.11: Trench Duct Accessories [6]

Item/Catalog Number		
	Right Hand Reducer 18" to 12" Cover Included	RRV182100012RR
	Left Hand Reducer 18" to 12" Cover Included	RRV182100012LR
	Reducing Tee 18" to 12" Cover Included	RTV182100017
	Spacer Bar and Barrier Adjustment Gage	6" 9" 12" 18" 24" 30"
	Support Post Strips 5'	RSP60
	U-Compartment 5'-0" Long x 3 -1/2" Wide with Adjustable Height Sides	RUC60
	Support Channel Leveling Legs Not Included	9" and 12" wide trench 18" and 24" wide trench 30" wide trench
		5/16 x 18 x 3"
	Cover Lifter (Suction Cup Device)	G19103
	Tunnels for Trench Duct Elbows (Tee or Cross) Straight through tunnel 90° elbow tunnel	90° tunnel for 12" trench 90° tunnel for 18" trench Straight tunnel for 12" trench Straight tunnel for 18" trench
Grommet Material (50 ft. rolls)		RG50

[6] Some products may be discontinued. Refer to [Busway and Cable Management](#) online for current information.

[7] Includes cover; shipped attached. All coverplate corner notches are 1-1/2" deep.