



# Trusted Protection. Simple Management. Perfect for Distributed IT.

Smart-UPS and Smart-UPS On-Line

[apc.com](http://apc.com)

Life Is On

**APC**<sup>™</sup>  
by Schneider Electric

# Why do you need Uninterruptible Power Supplies (UPS)?

An Uninterruptible Power Supply (UPS) helps ensure that businesses have power protection for critical applications. A UPS provides protection for these critical systems in the event of a power disruption, whether it's a prolonged outage or just a blip that can nonetheless damage sensitive machines such as computers and cash registers. The UPS provide backup power that can keep critical equipment up and running during relatively short outages and allow you to safely power them down in the event of a longer outage. UPSs are a critical component of any business continuity plan.

## UPS Benefits



### Network Availability

Ability to ride out all disruptions rather than shutdown



### Hardware Protection

Avoid loss or corruption caused by power issues



### Data Protection

Prevent damage caused by EMI/RFI interference, and other power issues



### Energy Efficiency

Lower operating costs and a smaller carbon footprint



### Avoid High Cost of Downtime

+\$25,000 on average per hour for small business<sup>1</sup>

+\$540,000 on average per hour for medium & large enterprise<sup>1</sup>



<sup>1</sup> Atlassian, "Calculating the Cost of Downtime", <https://www.atlassian.com/incident-management/kpis/cost-of-downtime>

# The Smart-UPS family

Smart-UPS™ family provides intelligent and efficient network grade power protection from entry level to scalable runtime. Smart-UPS are ideal for servers, point-of-sale (POS), routers, switches, hubs and other network devices.

Smart-UPS enables IT professionals to operate more effectively by providing versatile power protection while minimizing maintenance and offering flexible remote UPS monitoring & management options across distributed environments. All Smart-UPS models are Ecostruxure ready.



## Ideal power protection for:



Servers



Point-of-Sale



Routers



Switches



Hubs

## SMC

- The SMC series provides affordable, sinewave power to support critical electronics during power disruptions.
- Designed for small offices or small business owners to maintain a core network and business communications, SMC series are ideal for entry-level servers, networks, business VoIP, retail POS, edge networks and business desktops.



SMC1000C

## SMT

- The SMT series provides best-in-class UPS management through a Network Management Card as well as remote monitoring via a secure web portal. Extended range AVR boost and trim provides robust voltage regulation for sensitive electronics.
- Designed for IT managers or network administrators to maintain business uptime and continuity, SMT series is ideal for server rooms, network closets, business VoIP, retail POS, edge networks, business desktops, data storage & network-attached storage.



SMT1000RM2UC

## SMX

- The SMX series provide flexible rack/tower convertible models for ease of installation, as well as extended runtime for critical applications with scalable external battery packs.
- Designed for IT managers or network administrators to maintain business uptime, data transfer and continuity during prolonged power outages, SMX series are ideal for server rooms, network closets, business VoIP, data storage & network-attached storage (NAS) and small datacenters.



SMX2000LV

## Smart-UPS Lithium-ion (SCL, SMTL)

- Smart-UPS Lithium-ion series provides 2x the life with light weight lithium-ion batteries making the UPS easier to install and reduce the Total Cost of Ownership. 2x longer lasting Lithium-ion batteries lower operating costs while providing resilient protection at the Edge.
- Designed for IT managers or network administrators looking to lower Total Cost of Ownership (TCO) by minimizing UPS maintenance and simplify operations through remote UPS management across distributed environments.



### Why consider Smart-UPS Lithium-ion?



2X Longer life expectancy than VRLA batteries



Eliminate the cost of battery replacement and labor



Save on TCO by up to 50%



One-third lighter batteries for easier handling and installation



Five-year factory warranty on the UPS and battery



Battery management system and certifications provide higher level of performance



Greater efficiency in charge and discharge of the batteries

Learn more at [www.apc.com/lithium-ion](http://www.apc.com/lithium-ion) >

# Smart-UPS On-Line Family

- The Smart-UPS On-Line series provide high density, double-conversion on-line power protection for servers, voice / data networks, medical labs, and light industrial applications.
- Capable of supporting loads from 1 to 20kVA in a rack/tower convertible form, the Smart-UPS On-Line series are available from 2U to 12U. When business-critical systems require runtime in hours, Smart-UPS On-Line can be configured with matching battery packs to comply with aggressive runtime demands. All Smart-UPS On-Line models are Ecostruxure ready via Network Management Card.



## Ideal power protection for:



Servers



Voice/Data  
Networks



Medical Labs



Industrial



Other Mission  
Critical  
Applications



## SMART-UPS AND SMART-UPS ON-LINE FAMILY

### EcoStruxure™ Ready Smart-UPS

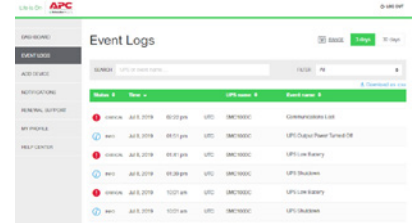
Provides remote monitoring and management options via the SmartConnect Ethernet Port and the SmartSlot on the back of the device.

#### Do it yourself monitoring EcoStruxure Ready Smart-UPS Portal

Secure web portal for essential monitoring. Provides visibility to help make proactive decisions and maximize uptime, ideal for small and medium businesses.

- Out-of-box connectivity via the SmartConnect Ethernet Port
- Free with purchase of SMC/SMT/Select SMX models

[EcoStruxure Ready Smart-UPS Portal >](#)

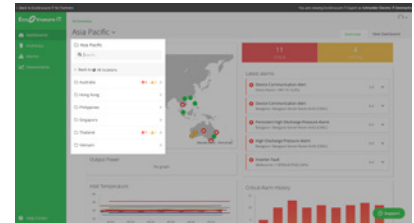


#### Do it yourself monitoring EcoStruxure IT Expert

Secure web portal and mobile app providing specific data driven recommendations, alerts, and instant visibility and device management capabilities on the UPS with EcoStruxure IT Expert. Ideal for distributed IT sites and businesses with mixed IT environments.

- Available via the SmartConnect Ethernet Port for SMC/SMT/Select SMX models.
- Available via the SmartSlot for SMT/SMX models. Prices varies by software plan.

[EcoStruxure IT Expert >](#)

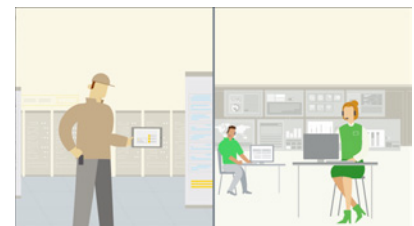


#### We monitor, you service EcoStruxure Asset Advisor

Have Schneider Electric's team of experts monitor and manage your Smart-UPS and entire IT infrastructure with EcoStruxure IT Asset Advisor. Connect using the Network Management Card to EcoStruxure IT platform, have Schneider's team provide 24/7 remote monitoring and support while keeping visibility through the mobile app.

- Available via the SmartSlot for SMT/SMX/SRT models
- Price varies by software and services plans.

[EcoStruxure Asset Advisor >](#)



#### We monitor and service Monitoring & Dispatch




Have Schneider Electric provide 24/7 remote monitoring, support, and dispatch services for you. Connect using the Network Management Card to EcoStruxure IT platform. Ideal choice if you don't have the resources to monitor and maintain your distributed IT sites.

- Available via the SmartSlot for SMT/SMX/SRT models
- Price varies by software and service plans. Available in USA only.

[Monitoring & Dispatch >](#)



# Series Comparison

					
	<b>SMC</b>	<b>SMT</b>	<b>SMTL</b>	<b>SMX</b>	<b>SRT</b>
<b>VA</b>	1000/1500	750/1000/1500/ 2200/3000	750/1000/1500	750/1000/1500/2000/ 2200/3000	1000/1500/2200/3000/ 5000/6000/8000/ 10000VA
<b>Output Power Factor</b>	0.6	0.7 (≤1.5kVA) 0.9 (>1.5kVA)	0.8 (≤1kVA) 0.9 (1.5kVA)	0.8 (<2kVA non smartconnect models) 0.9 (<2kVA smartconnect models; ≥2kVA models)	0.9(≤5kVA) 1.0(>5kVA)
<b>Line Interactive Topology</b>	√	√	√	√	On-line
<b>Form Factor</b>	Rack or Tower	Rack or Tower	Rack	Rack Tower Convertible	Rack Tower Convertible
<b>Rack Height</b>	2U	1U/2U	2U/3U	2U/4U	2-10U
<b>Sinewave Output</b>	√	√	√	√	√
<b>Extended Battery Packs</b>	—	—	—	Up to 5 (<2kVA) Up to 10 (≥2kVA )	Up to 10
<b>LCD Screen</b>	√	√	√	√	√ multi-color
<b>Green Mode</b>	√	√	√	√	√
<b>Lithium-ion Battery Options</b>	—	—	√	—	1000/1500/2200/3000VA for 230V regions only
<b>Short Depth Options</b>	—	—	√	√	—
<b>Smartconnect Remote Monitoring</b>	√	√	√	Select 120V models only	—
<b>PowerChute Software</b>	√	√	√	√	√
<b>Network Management Card</b>	—	optional	optional	optional	optional
<b>Operating Temperature</b>	0 - 40 °C / 32 - 104 °F	0 - 40 °C / 32 - 104 °F	0 - 40 °C / 32 - 104 °F	0 - 40 °C / 32 - 104 °F	0 - 40 °C / 32 - 104 °F
<b>Warranty</b>	2 yrs	3 yrs (2 yrs batt. or 3 yrs batt. if registered via the SmartConnect Port)	5 yrs	3 yrs (2 yrs batt. or 3 yrs batt. if registered via the SmartConnect Port)	3 yrs (2 yrs batt)
<b>Ecostruxure IT</b>	√	√	√	√	√
<b>Monitor &amp; Dispatch Service</b>	√	√	√	√	√

# Specifications by SKU

Part #	Input Voltage	Rating (VA/Watts)	Runtime (min) Half/Full Load	Extended Battery Packs	Input Connections	Output connections	Comm. ports	Rack Height	Dimensions (in) H x W x D	Net Weight (lb)
<b>SMC Line Interactive 120V Models, VRLA Battery for Desktop Applications</b>										
<b>SMC1000C †</b>	120V	1000/600	22.5/9.2	—	NEMA 5-15P	(8) NEMA 5-15R	RJ-45 Serial, USB	—	8.62 x 6.72 x 17.3	37.48
<b>SMC1000-2UC †</b>	120V	1000/600	22.5/9.2	—	NEMA 5-15P	(6) NEMA 5-15R	RJ-45 Serial, USB	2	3.39 x 17.0 x 16.0	45.15
<b>SMC1500C †</b>	120V	1440/900	20.4/7.8	—	NEMA 5-15P	(8) NEMA 5-15R	RJ-45 Serial, USB	—	8.62 x 6.73 x 17.28	44.31
<b>SMC1500-2UC †</b>	120V	1440/900	18.7/6.8	—	NEMA 5-15P	(6) NEMA 5-15R	RJ-45 Serial, USB	2	3.39 x 17.0 x 18.78	55.78
<b>SMT Line Interactive 120V Models, VRLA Battery for Server &amp; Networking Applications</b>										
<b>SMT750C †</b>	120V	750/500	15.9/4.6	—	NEMA 5-15P	(6) NEMA 5-15R	SmartSlot, USB	—	6.34 x 5.43 x 14.53	27.56
<b>SMT750RM2UC †</b>	120V	750/500	16.1/5.5	—	NEMA 5-15P	(6) NEMA 5-15R	RJ-45 Serial, SmartSlot, USB	2	3.39 x 17.0 x 16.1	39.02
<b>SMT750RM2UNC ‡</b>	120V	750/500	16.1/5.5	—	NEMA 5-15P	(6) NEMA 5-15R	RJ-45 10/100 Base-T, RJ-45 Serial, SmartSlot, USB	2	3.5 x 17.0 x 16.0	38
<b>SMT1000C †</b>	120V	1000/700	19.1/5.8	—	NEMA 5-15P	(8) NEMA 5-15R	SmartSlot, USB	—	8.62 x 6.73 x 17.28	44.31
<b>SMT1000RM2UC †</b>	120V	1000/700	29.9/8.5	—	NEMA 5-15P	(6) NEMA 5-15R	RJ-45 Serial, SmartSlot, USB	2	3.39 x 17.0 x 18.78	55.78
<b>SMT1500C †</b>	120V	1440/1000	23.1/6.5	—	NEMA 5-15P	(8) NEMA 5-15R	SmartSlot, USB	—	8.62 x 6.73 x 17.28	54.23
<b>SMT1500NC ‡</b>	120V	1440/1000	23.1/6.5	—	NEMA 5-15P	(8) NEMA 5-15R	RJ-45 10/100 Base-T, RJ-45 Serial, SmartSlot, USB	—	8.62 x 6.73 x 17.28	63
<b>SMT1500RM1U</b>	120V	1440/1000	16.6/4.8	—	NEMA 5-15P	(4) NEMA 5-15R	RJ-45 Serial, SmartSlot, USB	1	1.75 x 17.0 x 26.2	112
<b>SMT1500RM2UC †</b>	120V	1440/1000	25.9/7.2	—	NEMA 5-15P	(6) NEMA 5-15R	RJ-45 Serial, SmartSlot, USB	2	3.39 x 17.0 x 18.78	93.08
<b>SMT1500RM2UNC † ‡</b>	120V	1440/1000	25.9/7.2	—	NEMA 5-15P	(6) NEMA 5-15R	RJ-45 10/100 Base-T, RJ-45 Serial, SmartSlot, USB	2	3.5 x 17.0 x 18.0	93.28
<b>SMT1500R2-NMC ‡</b>	120V	1440/1000	25.9/7.2	—	NEMA 5-15P	(6) NEMA 5-15R	RJ-45 10/100 Base-T, RJ-45 Serial, SmartSlot, USB	2	3.5 x 17.0 x 18.0	116
<b>SMT2200C †</b>	120V	1920/1920	28.3/10.1	—	NEMA 5-20P	(2) NEMA 5-20R, (8) NEMA 5-15R	RJ-45 Serial, SmartSlot, USB	—	17.13 x 7.7 x 21.42	97.42
<b>SMT2200RM2UC †</b>	120V	1920/1920	18.7/6.6	—	NEMA 5-20P	(6) NEMA 5-15R, (2) NEMA 5-20R	RJ-45 Serial, SmartSlot, USB	2	3.39 x 17.01 x 26.89	97.62
<b>SMT2200RM2UNC ‡</b>	120V	1920/1920	15.9/5.4	—	NEMA 5-20P	(2) NEMA 5-20R, (6) NEMA 5-15R	RJ-45 10/100 Base-T, RJ-45 Serial, SmartSlot, USB	2	3.39 x 18.9 x 26.89	53.2
<b>SMT3000C †</b>	120V	2880/2700	17.5/5.1	—	NEMA L5-30P	(8) NEMA 5-15R, (2) NEMA 5-20R	SmartSlot, USB	—	17.13 x 7.7 x 21.42	53
<b>SMT3000RM2UC †</b>	120V	2880/2700	10.8/2.8	—	NEMA L5-30P	(6) NEMA 5-15R, (2) NEMA 5-20R	RJ-45 Serial, SmartSlot, USB	2	3.39 x 17.01 x 26.89	58.42
<b>SMT3000RM2UNC ‡</b>	120V	2880/2700	11.7/3.4	—	NEMA L5-30P	(2) NEMA 5-20R, (6) NEMA 5-15R	RJ-45 Serial, SmartSlot, USB	2	3.39 x 18.9 x 26.89	63.2
<b>SMT3000RMT2U †</b>	120V	2880/2700	11.7/3.4	—	NEMA L6-20P	(2) NEMA L6-20R	RJ-45 Serial, SmartSlot, USB	2	3.39 x 18.9 x 26.89	97.42
<b>Smart-UPS Lithium-ion Line Interactive 120V models</b>										
<b>SCL500RM1UNC † ‡</b>	120V	500/400	6.3/2.7	—	NEMA 5-15P	(4) NEMA 5-15R	RJ-45 Serial, SmartSlot, USB	1	1.75 x 17.0 x 9.14	9.3
<b>SCL500RM1UC †</b>	120V	500/400	6.3/2.7	—	NEMA 5-15P	(4) NEMA 5-15R	RJ-45 Serial, SmartSlot, USB	1	1.75 x 17.0 x 9.14	9.22
<b>SMTL750RM2UC †</b>	120V	750/600	13.8/5.7	—	NEMA 5-15P	(6) NEMA 5-15R	RJ-45 Serial, SmartSlot, USB	2	3.4 x 17.25 x 12.52	34
<b>SMTL1000RM2UC †</b>	120V	1000/800	19.0/8.0	—	NEMA 5-15P	(6) NEMA 5-15R	RJ-45 Serial, SmartSlot, USB	2	3.4 x 17.25 x 12.52	36
<b>SMTL1500RM3UC †</b>	120V	1440/1350	12.8/5.0	—	NEMA 5-15P	(6) NEMA 5-15R	RJ-45 Serial, SmartSlot, USB	3	5.14 x 17.25 x 11.89	43

† Includes SmartConnect Port for cloud monitoring ‡ Preinstalled NMC



# Specifications by SKU

Part #	Input Voltage	Rating (VA/Watts)	Runtime (min) Half/Full Load	Extended Battery Packs	Input Connections	Output connections	Comm. ports	Rack Height	Dimensions (in) H x W x D	Net Weight (lb)
<b>SMX Line Interactive 120V, 50/60 Hz Models for Server, Networking &amp; Other Applications with Extended Run Requirement</b>										
SMX750C †	120V	750/600	25.6/12	SMX48RMBP2U	NEMA 5-15P	(8) NEMA 5-15R	RJ-45 Serial, SmartSlot, USB	2	17.0 x 3.5 x 19.3	48.6
SMX750CNC † ‡	120V	750/600	25.6/12	SMX48RMBP2U	NEMA 5-15P	(8) NEMA 5-15R	RJ-45 Serial, SmartSlot, USB	2	17.0 x 3.5 x 19.3	48.6
SMX750-NMC ‡	120V	750/600	37.8/14.2	SMX48RMBP2U	NEMA 5-15P	(8) NEMA 5-15R	RJ-45 Serial, SmartSlot, USB	2	17.0 x 3.5 x 19.3	48.5
SMX1000C †	120V	1000/800	19.7/8	SMX48RMBP2U	NEMA 5-15P	(8) NEMA 5-15R	RJ-45 Serial, SmartSlot, USB	2	17.0 x 3.5 x 19.3	50.4
SMX1500RM2UC †	120V	1440/1200	14.8/5	SMX48RMBP2U	NEMA 5-15P	(8) NEMA 5-15R	RJ-45 Serial, SmartSlot, USB	2	3.5 x 17.0 x 19.3	54.7
SMX1500RM2UNC ‡	120V	1440/1200	17.2/5.8	SMX48RMBP2U	NEMA 5-15P	(8) NEMA 5-15R	RJ-45 Serial, SmartSlot, USB	2	3.5 x 17.0 x 19.3	54.7
SMX1500RM2UCNC † ‡	120V	1440/1200	14.8/5	SMX48RMBP2U	NEMA 5-15P	(8) NEMA 5-15R	RJ-45 Serial, SmartSlot, USB	2	3.5 x 17.0 x 19.3	54.7
SMX750	120V	750/600	37.8/14.2	SMX48RMBP2	NEMA 5-15P	(8) NEMA 5-15R	RJ-45 Serial, SmartSlot, USB	2	17.0 x 3.5 x 19.3	48.5
SMX750NC ‡	120V	750/600	37.8/14.2	SMX48RMBP2	NEMA 5-15P	(8) NEMA 5-15R	RJ-45 10/100 Base-T, SmartSlot, USB	2	17.0 x 3.5 x 19.3	48.5
SMX1000	120V	1000/800	24.2/8.1	SMX48RMBP2	NEMA 5-15P	(8) NEMA 5-15R	RJ-45 Serial, SmartSlot, USB	2	17.0 x 3.5 x 19.3	50.3
SMX1500RM2U	120V	1440/1200	17.2/5.8	SMX48RMBP2U	NEMA 5-15P	(8) NEMA 5-15R	RJ-45 Serial, SmartSlot, USB	2	3.5 x 17.0 x 19.3	54.7
SMX1500RM2UNC ‡	120V	1440/1200	17.2/5.8	SMX48RMBP2U	NEMA 5-15P	(8) NEMA 5-15R	RJ-45 10/100 Base-T, RJ-45 Serial, SmartSlot, USB	2	3.5 x 17.0 x 19.3	54.7
SMX2000RMLV2U	120V	1920/1800	27.6/10.9	SMX120RMBP2U	NEMA 5-20P	(3) NEMA 5-15R, (1) NEMA L5-20R, (3) NEMA 5-20R	RJ-45 Serial, SmartSlot, USB	2	3.36 x 17.0 x 26.26	84.6
SMX2000RMLV2UNC ‡	120V	1920/1800	27.6/10.9	SMX120RMBP2U	NEMA 5-20P	(3) NEMA 5-15R, (3) NEMA 5-20R, (1) NEMA L5-20R	RJ-45 Serial, SmartSlot, USB	2	3.36 x 17.0 x 26.26	84.6
SMX2000LV	120V	1920/1800	27.6/10.9	SMX120BP	NEMA 5-20P	(3) NEMA 5-20R, (1) NEMA L5-20R, (6) NEMA 5-15R	RJ-45 Serial, SmartSlot, USB	4	17.0 x 7.0 x 19.0	85
SMX2000LVNC ‡	120V	1920/1800	27.6/10.9	SMX120BP	NEMA 5-20P	(3) NEMA 5-20R, (1) NEMA L5-20R, (6) NEMA 5-15R	RJ-45 Serial, SmartSlot, USB	4	17.0 x 7.0 x 19.0	85
SMX2200RMLV2U	120V	2200/1980	25.3/9.8	SMX120RMBP2U	NEMA L5-30P	(6) NEMA 5-15R, (2) NEMA 5-20R	RJ-45 Serial, SmartSlot, USB	2	3.36 x 17.0 x 26.26	84.6
SMX3000RMLV2UNC ‡	120V	2880/2700	18.1/6.3	SMX120RMBP2U	NEMA L5-30P	(1) NEMA L5-30R, (3) NEMA 5-15R, (3) NEMA 5-20R	RJ-45 Serial, SmartSlot, USB	2	3.36 x 17.0 x 26.26	84.6
SMX3000LV	120V	2880/2700	18.1/6.3	SMX120BP	NEMA L5-30P	(3) NEMA 5-20R, (1) NEMA L5-30R, (6) NEMA 5-15R	RJ-45 Serial, SmartSlot, USB	4	17.0 x 7.0 x 19.0	85
SMX3000RMLV2U	120V	2880/2700	18.1/6.3	SMX120RMBP2U	NEMA L5-30P	(3) NEMA 5-15R, (3) NEMA 5-20R, (1) NEMA L5-30R	RJ-45 Serial, SmartSlot, USB	2	3.36 x 17.0 x 26.26	84.6
SMX3000LVNC ‡	120V	2880/2700	18.1/6.3	SMX120BP	NEMA L5-30P	(6) NEMA 5-15R, (1) NEMA L5-30R, (3) NEMA 5-20R	RJ-45 Serial, SmartSlot, USB	4	17.0 x 7.0 x 19.0	85
<b>SMX Line Interactive 208V or Higher, 50/60 Hz Models for Server, Networking &amp; Other Applications with Extended Run Requirement</b>										
SMX2200HV	208V	2200/1980	25.3/9.8	SMX120BP	IEC-320 C20, Schuko CEE 7/ EU1-16P, British BS1363A	(8) IEC 320 C13, (2) IEC 320 C19, (2) IEC Jumpers	RJ-45 Serial, SmartSlot, USB	4	17.0 x 7.0 x 19.0	85
SMX2200HVNC ‡	208V	2200/1980	25.3/9.8	SMX120BP	British BS1363A, IEC-320 C20, Schuko CEE 7/ EU1-16P	(2) IEC 320 C19, (2) IEC Jumpers, (8) IEC 320 C13"	RJ-45 10/100 Base-T, RJ-45 Serial, SmartSlot, USB	4	17.0 x 7.0 x 19.0	85
SMX2200R2HVNC ‡	208V	2200/1980	25.3/9.8	SMX120RMBP2U	British BS1363A, IEC-320 C20, Schuko CEE 7/ EU1-16P	(1) IEC 320 C19, (2) IEC Jumpers, (8) IEC 320 C13	RJ-45 10/100 Base-T, RJ-45 Serial, SmartSlot, USB	2	3.36 x 17.0 x 26.26	82.1
SMX2200RMHV2U	200-240V	2200/1980	25.3/9.8	SMX120RMBP2U	IEC-320 C20, Schuko CEE 7/ EU1-16P, British BS1363A	(8) IEC 320 C13, (2) IEC Jumpers, (1) IEC 320 C19	RJ-45 Serial, SmartSlot, USB	2	3.36 x 17.0 x 26.26	82.1

† Includes SmartConnect Port for cloud monitoring ‡ Preinstalled NMC

# Specifications by SKU

Part #	Input Voltage	Rating (VA/Watts)	Runtime (min) Half/Full Load	Extended Battery Packs	Input Connections	Output connections	Comm. ports	Rack Height	Dimensions (in) H x W x D	Net Weight (lb)
<b>SMX Line Interactive 208V or Higher, 50/60 Hz Models for Server, Networking &amp; Other Applications with Extended Run Requirement</b>										
SMX3000HV	208V	3000/2700	18.1/6.3	SMX120BP	IEC-320 C20, Schuko CEE 7/ EU1-16P, British BS1363A	(2) IEC 320 C19, (2) IEC Jumpers, (8) IEC 320 C13	RJ-45 Serial, SmartSlot, USB	4	17.0 x 7.0 x 19.0	85
SMX3000HVT	208V	3000/2700	18.1/6.3	SMX120BP	NEMA L6-20P	(3) IEC Jumpers, (4) IEC 320 C13, (2) IEC 320 C19, (2) NEMA L6-20R	RJ-45 Serial, SmartSlot, USB	4	17.0 x 7.0 x 19.0	85
SMX3000RMHV2U	200-240V	3000/2700	18.1/6.3	SMX120RMBP2U	IEC-320 C20, Schuko CEE 7/ EU1-16P, British BS1363A	(1) IEC 320 C19, (8) IEC 320 C13, (2) IEC Jumpers	RJ-45 Serial, SmartSlot, USB	2	3.36 x 17.0 x 26.26	82.1
SMX3000HVNC †	200-240V	3000/2700	18.1/6.3	SMX120BP	British BS1363A, IEC-320 C20, Schuko CEE 7/ EU1-16P	(2) IEC Jumpers, (8) IEC 320 C13, (2) IEC 320 C19	RJ-45 Serial, SmartSlot, USB	4	17.0 x 7.0 x 19.0	85
SMX3000RMHV2UNC †	200-240V	3000/2700	18.1/6.3	SMX120RMBP2U	British BS1363A, IEC-320 C20, Schuko CEE 7/ EU1-16P	(2) IEC Jumpers, (8) IEC 320 C13, (2) IEC 320 C19	RJ-45 Serial, SmartSlot, USB	2	3.36 x 17.0 x 26.26	82.1
<b>TAA Compliant Models</b>										
SMT750US	120V	750/500	15.9/4.6	—	NEMA 5-15P	(6) NEMA 5-15R	RJ-45 Serial, SmartSlot, USB	—	6.34 x 5.43 x 14.29	29
SMT1000US	120V	1000/700	19.1/5.8	—	NEMA 5-15P	(8) NEMA 5-15R	RJ-45 Serial, SmartSlot, USB	—	8.62 x 6.73 x 17.28	42
SMT1500US	120V	1440/1000	23.1/6.5	—	NEMA 5-15P	(8) NEMA 5-15R	RJ-45 Serial, SmartSlot, USB	—	8.62 x 6.73 x 17.28	53
SMT1500RMUS	120V	1440/1000	25.9/7.2	—	NEMA 5-15P	(6) NEMA 5-15R	RJ-45 Serial, SmartSlot, USB	2	3.5 x 17.0 x 18.0	63
SMT2200US	120V	1920/1920	22.5/7.5	—	NEMA 5-20P	(2) NEMA 5-20R, (8) NEMA 5-15R	RJ-45 Serial, SmartSlot, USB	—	17.0 x 7.7 x 21.42	112
SMT2200RMUS	120V	1920/1920	15.9/5.4	—	NEMA 5-20P	(6) NEMA 5-15R, (2) NEMA 5-20R	RJ-45 Serial, SmartSlot, USB	2	3.39 x 18.9 x 26.89	93.08
SMT3000RMUS	120V	2880/2700	11.7/3.4	—	NEMA L5-30P	(6) NEMA 5-15R, (2) NEMA 5-20R	RJ-45 Serial, SmartSlot, USB	2	3.39 x 18.9 x 26.89	97.42
SMX750US	120V	750/600	37.8/14.2	SMX48RMBP2US	NEMA 5-15P	(8) NEMA 5-15R	RJ-45 Serial, SmartSlot, USB	2	17.0 x 3.5 x 19.3	48.5
SMX1000US	120V	1000/800	24.2/8.1	SMX48RMBP2US	NEMA 5-15P	(8) NEMA 5-15R	RJ-45 Serial, SmartSlot, USB	2	17.0 x 3.5 x 19.3	50.3
SMX1500RMNCUS †	120V	1440/1200	17.2/5.8	SMX48RMBP2US	NEMA 5-15P	(8) NEMA 5-15R	RJ-45 10/100 Base-T, RJ-45 Serial, SmartSlot, USB	2	3.5 x 17.0 x 19.3	54.6
SMX1500RMUS	120V	1440/1200	17.2/5.8	SMX48RMBP2US	NEMA 5-15P	(8) NEMA 5-15R	RJ-45 Serial, SmartSlot, USB	2	3.5 x 17.0 x 19.3	54.6
SMX2000LVNCUS †	120V	1920/1800	27.6/10.9	SMX120BP	NEMA 5-20P	(1) NEMA L5-20R, (6) NEMA 5-15R, (3) NEMA 5-20R	RJ-45 Serial, SmartSlot, USB	4	17.0 x 7.0 x 19.0	85
SMX2000LVUS	120V	1920/1800	27.6/10.9	SMX120BP	NEMA 5-20P	(6) NEMA 5-15R, (1) NEMA L5-20R, (3) NEMA 5-20R	RJ-45 Serial, SmartSlot, USB	4	17.0 x 7.0 x 19.0	85
SMX2KRMLVNCUS †	120V	1920/1800	27.6/10.9	SMX120RMBP2U	NEMA 5-20P	(1) NEMA L5-20R, (3) NEMA 5-15R, (3) NEMA 5-20R	RJ-45 10/100 Base-T, RJ-45 Serial, SmartSlot, USB	2	3.36 x 17.0 x 26.26	84.6
SMX2200RMLVUS	120V	2200/1980	25.3/9.8	SMX120RMBP2U	NEMA L5-30P	(6) NEMA 5-15R, (2) NEMA 5-20R	RJ-45 Serial, SmartSlot, USB	2	3.36 x 17.0 x 26.26	84.6
SMX3000LVUS	120V	2880/2700	18.1/6.3	SMX120BP	NEMA L5-30P	(1) NEMA L5-30R, (3) NEMA 5-20R, (6) NEMA 5-15R	RJ-45 Serial, SmartSlot, USB	4	17.0 x 7.0 x 19.0	85
SMX3000LVNCUS †	120V	2880/2700	18.1/6.3	SMX120BP	NEMA L5-30P	(3) NEMA 5-20R, (1) NEMA L5-30R, (6) NEMA 5-15R	RJ-45 Serial, SmartSlot, USB	4	17.0 x 7.0 x 19.0	85
SMX3000RMLVUS	120V	2880/2700	18.1/6.3	SMX120RMBP2U	NEMA L5-30P	(3) NEMA 5-15R, (1) NEMA L5-30R, (3) NEMA 5-20R	RJ-45 Serial, SmartSlot, USB	2	3.36 x 17.0 x 26.26	84.6
SMX3KRMLVNCUS †	120V	2880/2700	18.1/6.3	SMX120RMBP2U	NEMA L5-30P	(3) NEMA 5-15R, (1) NEMA L5-30R, (3) NEMA 5-20R	RJ-45 Serial, SmartSlot, USB	2	3.36 x 17.0 x 26.26	84.6

† Includes SmartConnect Port for cloud monitoring ‡ Preinstalled NMC

# Specifications by SKU

Part #	Input Voltage	Rating (VA/Watts)	Runtime (min) Half/Full Load	Extended Battery Packs	Input Connections	Output connections	Comm. ports	Rack Height	Dimensions (in) H x W x D	Net Weight (lb)
<b>TAA Compliant Models</b>										
SRT2200RMXLAUS	120V	2200/1800	10.3/3.3	SRT72RMBPUS	NEMA 5-20P	(1) NEMA L5-20R, (6) NEMA 5-20R	RJ-45 Serial, SmartSlot, USB	2	3.35 x 17.0 x 23.0	55
SRT3000XLAUS	120V	3000/2700	10.3/3.2	SRT72RMBPUS	NEMA L5-30P	(8) NEMA 5-20R, (1) NEMA L5-30R	RJ-45 Serial, SmartSlot, USB	2	17.0 x 3.35 x 25.0	69
SMX3000HVTUS	208V	3000/2700	18.1/6.3	SMX120BP	NEMA L6-20P	(4) IEC 320 C13, (2) NEMA L6-20R, (3) IEC Jumpers, (2) IEC 320 C19	RJ-45 Serial, SmartSlot, USB	4	17.0 x 7.0 x 19.0	85
SRT5KRMXL <sup>†</sup> TUS	208V	5000/4800	10.7/3.5	SRT192RMBPUS	NEMA L6-30P	(2) NEMA L6-20R, (2) NEMA L6-30R	RJ-45 10/100 Base-T, RJ-45 Serial, SmartSlot, USB	3	5.1 x 17.0 x 28.32	123
SRT5KXL <sup>†</sup> TUS	208V	5000/4800	10.7/3.5	SRT192BPUS	NEMA L6-30P	(2) NEMA L6-30R, (2) NEMA L6-20R	RJ-45 10/100 Base-T, RJ-45 Serial, SmartSlot, USB	3	17.0 x 5.1 x 28.32	123
SRT6KXL <sup>†</sup> TUS	208V	6000/6000	8.3/2.3	SRT192BPUS	Hard Wire 3-wire (2PH + G)	(1) Hard Wire 3-wire (2PH + G), (2) NEMA L6-20R, (3) NEMA L6-30R	RJ-45 10/100 Base-T, RJ-45 Serial, SmartSlot, USB	4	17.0 x 6.85 x 28.32	135
SRT8KXL <sup>†</sup> TUS	208V	8000/8000	14.4/5.2	SRT192BP2US	Hard Wire 3-wire (2PH + G)	(4) NEMA L6-20R, (2) NEMA L6-30R, (1) Hard Wire 3-wire (2PH + G)	RJ-45 10/100 Base-T, RJ-45 Serial, SmartSlot, USB	6	17.0 x 10.35 x 28.15	246
SRT10KXL <sup>†</sup> TUS	208V	10000/10000	11.4/3.7	SRT192BP2US	Hard Wire 3-wire (2PH + G)	(2) NEMA L6-30R, (4) NEMA L6-20R, (1) Hard Wire 3-wire (2PH + G)	RJ-45 10/100 Base-T, RJ-45 Serial, SmartSlot, USB	6	17.0 x 10.35 x 28.15	246
<b>Smart-UPS On-Line for Mission Critical Applications</b>										
SRT1000XLA	120V	1000/900	25.4/10.5	SRT48BP	NEMA 5-15P	(6) NEMA 5-15R	RJ-45 Serial, SmartSlot, USB	2	17.0 x 3.35 x 20.0	48.5
SRT1000RMXLA	120V	1000/900	25.4/10.5	SRT48RMBP	NEMA 5-15P	(6) NEMA 5-15R	RJ-45 Serial, SmartSlot, USB	2	3.35 x 17.0 x 20.0	48.5
SRT1000RMXLA-NC <sup>‡</sup>	120V	1000/900	25.4/10.5	SRT48RMBP	NEMA 5-15P	(6) NEMA 5-15R	RJ-45 10/100 Base-T, RJ-45 Serial, SmartSlot, USB	2	3.35 x 17.0 x 20.0	48.5
SRT1500XLA	120V	1500/1350	13.2/4.6	SRT48BP	NEMA 5-15P	(6) NEMA 5-15R	RJ-45 Serial, SmartSlot, USB	2	17.0 x 3.35 x 20.0	48.5
SRT1500RMXLA	120V	1500/1350	13.2/4.6	SRT48RMBP	NEMA 5-15P	(6) NEMA 5-15R	RJ-45 Serial, SmartSlot, USB	2	3.35 x 17.0 x 20.0	48.5
SRT1500RMXLA-NC <sup>‡</sup>	120V	1500/1350	13.2/4.6	SRT48RMBP	NEMA 5-15P	(6) NEMA 5-15R	RJ-45 10/100 Base-T, RJ-45 Serial, SmartSlot, USB	2	3.35 x 17.0 x 20.0	48.5
SRT2200XLA	120V	2200/1800	10.3/3.3	SRT72BP	NEMA 5-20P	(6) NEMA 5-20R, (1) NEMA L5-20R	RJ-45 Serial, SmartSlot, USB	2	17.0 x 3.35 x 23.0	55
SRT2200RMXLA	120V	2200/1800	10.3/3.3	SRT72RMBP	NEMA 5-20P	(6) NEMA 5-20R, (1) NEMA L5-20R	RJ-45 Serial, SmartSlot, USB	2	3.35 x 17.0 x 23.0	55
SRT2200RMXLA-NC <sup>‡</sup>	120V	2200/1800	10.3/3.3	SRT72RMBP	NEMA 5-20P	(6) NEMA 5-20R, (1) NEMA L5-20R	RJ-45 10/100 Base-T, RJ-45 Serial, SmartSlot, USB	2	3.35 x 17.0 x 23.0	55
SRT3000XLT	208V	3000/2700	11.4/3.8	SRT96BP	NEMA L6-20P	(1) NEMA L6-30R, (2) NEMA L6-20R	RJ-45 Serial, SmartSlot, USB	2	17.0 x 3.35 x 25.0	69
SRT3000RMXLT	208V	3000/2700	11.4/3.8	SRT96RMBP	NEMA L6-20P	(1) NEMA L6-30R, (2) NEMA L6-20R	RJ-45 Serial, SmartSlot, USB	2	3.35 x 17.0 x 25.0	69
SRT3000RMXLT-NC <sup>‡</sup>	208V	3000/2700	11.4/3.8	SRT96RMBP	NEMA L6-20P	(2) NEMA L6-20R, (1) NEMA L6-30R	RJ-45 10/100 Base-T, RJ-45 Serial, SmartSlot, USB	2	3.35 x 17.0 x 25.0	69
SRT3000XLA	120V	3000/2700	10.3/3.2	SRT96BP	NEMA L5-30P	(1) NEMA L5-30R, (8) NEMA 5-20R	RJ-45 Serial, SmartSlot, USB	2	17.0 x 3.35 x 25.0	69
SRT3000RMXLA	120V	3000/2700	10.3/3.2	SRT96RMBP	NEMA L5-30P	(8) NEMA 5-20R, (1) NEMA L5-30R	RJ-45 Serial, SmartSlot, USB	2	3.35 x 17.0 x 25.0	69
SRT3000RMXLA-NC <sup>‡</sup>	120V	3000/2700	10.3/3.2	SRT96RMBP	NEMA L5-30P	(8) NEMA 5-20R, (1) NEMA L5-30R	RJ-45 10/100 Base-T, RJ-45 Serial, SmartSlot, USB	2	3.35 x 17.0 x 25.0	69

<sup>†</sup> Includes SmartConnect Port for cloud monitoring    <sup>‡</sup> Preinstalled NMC

# Specifications by SKU

Part #	Input Voltage	Rating (VA/Watts)	Runtime (min) Half/Full Load	Extended Battery Packs	Input Connections	Output connections	Comm. ports	Rack Height	Dimensions (in) H x W x D	Net Weight (lb)
<b>Smart-UPS On-Line for Mission Critical Applications</b>										
SRT3000XLW-IEC	208V, 230V	3000/2700	11.8/4.0	SRT96BP	British BS1363A, IEC-320 C20, Schuko CEE 7/ EU1-16P	(6) IEC 320 C13, (2) IEC Jumpers, (2) IEC 320 C19	RJ-45 Serial, SmartSlot, USB	2	17.0 x 3.35 x 25.0	69
SRT3000RMLW-IEC	208V, 230V	3000/2700	11.8/4.0	SRT96RMBP	British BS1363A, IEC-320 C20, Schuko CEE 7/ EU1-16P	(2) IEC 320 C19, (6) IEC 320 C13, (2) IEC Jumpers	RJ-45 Serial, SmartSlot, USB	2	3.35 x 17.0 x 25.0	69
SRT3000XLT-5KTF	208/240V	3000/2700	11.4/3.8	SRT96BP	NEMA L6-20P	(8) NEMA 5-20R, (4) NEMA L6-20R, (1) NEMA L6-30R, (1) NEMA L14-30R	RJ-45 Serial, SmartSlot, USB	4	17.0 x 6.69 x 25.0	194
SRT3000RMLT-5KTF	208/240V	3000/2700	11.4/3.8	SRT96RMBP	NEMA L6-20P	(12) NEMA 5-20R, (2) NEMA L6-20R	RJ-45 Serial, SmartSlot, USB	4	6.7 x 17.0 x 25.0	164
SRT5KXLT †	208V	5000/4800	10.7/3.5	SRT192BP	NEMA L6-30P	(2) NEMA L6-20R, (2) NEMA L6-30R	RJ-45 10/100 Base-T, RJ-45 Serial, SmartSlot, USB	3	17.0 x 5.1 x 28.32	123
SRT5KXLT-IEC †	208V	5000/4800	10.7/3.5	SRT192BP	NEMA L6-30P	(2) IEC Jumpers, (4) IEC 320 C19, (4) IEC 320 C13	RJ-45 10/100 Base-T, RJ-45 Serial, SmartSlot, USB	3	17.0 x 5.1 x 28.32	123
SRT5KRMXLT-IEC †	208V	5000/4800	10.7/3.5	SRT192BP	NEMA L6-30P	(2) IEC Jumpers, (4) IEC 320 C19, (4) IEC 320 C13	RJ-45 10/100 Base-T, RJ-45 Serial, SmartSlot, USB	3	5.1 x 17.0 x 28.31	123
SRT5KXLI †	230V	5000/4500	11.8/4.0	SRT192BP	Hard Wire 3 wire (1PH+N+G)	(6) IEC 320 C13, (2) IEC Jumpers, (4) IEC 320 C19	RJ-45 10/100 Base-T, RJ-45 Serial, SmartSlot, USB	3	17.0 x 5.1 x 28.32	120
SRT5KRMXLT †	208V	5400/4800	10.7/3.5	SRT192RMBP	NEMA L6-30P	(2) NEMA L6-20R, (2) NEMA L6-30R	RJ-45 10/100 Base-T, RJ-45 Serial, SmartSlot, USB	3	5.1 x 17.0 x 28.32	123
SRT5KRMXLT-5KTF †	208V	5000/4800	10.7/3.5	SRT192RMBP	NEMA L6-30P	(1) NEMA L6-30R, (2) NEMA L6-20R, (12) NEMA 5-20R	RJ-45 10/100 Base-T, RJ-45 Serial, SmartSlot, USB	5	8.6 x 17.0 x 28.32	218
SRT5KXLT-5KTF †	208/240V	5000/4800	10.7/3.5	SRT192BP	NEMA L6-30P	(8) NEMA 5-20R, (1) NEMA L14-30R, (2) NEMA L6-30R, (4) NEMA L6-20R	RJ-45 10/100 Base-T, RJ-45 Serial, SmartSlot, USB	5	17.0 x 10.2 x 28.32	248
SRT5KRMXLW-HW †	208V/230V	5000/4500	11.8/4.0	SRT192RMBP	Hard Wire 3-wire (2PH + G), Hard Wire 3 wire (1PH+N+G)	(1) Hard Wire 3-wire (2PH + G), (1) Hard Wire 3-wire (H N + G)	RJ-45 10/100 Base-T, RJ-45 Serial, SmartSlot, USB	3	5.1 x 17.0 x 28.32	123
SRT6KXLT †	208V	6000/6000	8.3/2.3	SRT192BP	Hard Wire 3-wire (2PH + G)	(1) Hard Wire 3-wire (2PH + G), (2) NEMA L6-20R, (3) NEMA L6-30R	RJ-45 10/100 Base-T, RJ-45 Serial, SmartSlot, USB	4	17.0 x 6.85 x 28.32	135
SRT6KXLT-IEC †	208V	6000/6000	8.3/2.3	SRT192BP	Hard Wire 3-wire (2PH + G)	(4) IEC 320 C19, (2) IEC Jumpers, (1) Hard Wire 3-wire (2PH + G), (6) IEC 320 C13	RJ-45 10/100 Base-T, RJ-45 Serial, SmartSlot, USB	4	17.0 x 6.85 x 28.32	132
SRT6KXLT-5KTF †	208/240V	6000/6000	8.3/2.3	SRT192BP	Hard Wire 3-wire (2PH + G)	(8) NEMA 5-20R, (1) Hard Wire 3-wire (2PH + G), (1) NEMA L14-30R, (3) NEMA L6-30R, (4) NEMA L6-20R	RJ-45 10/100 Base-T, RJ-45 Serial, SmartSlot, USB	4	17.0 x 11.95 x 28.32	260
SRT6KRMXLT †	208V	6000/6000	8.3/2.3	SRT192RMBP	Hard Wire 3-wire (2PH + G)	(1) Hard Wire 3-wire (2PH + G), (2) NEMA L6-20R, (3) NEMA L6-30R	RJ-45 10/100 Base-T, RJ-45 Serial, SmartSlot, USB	4	6.85 x 17.0 x 28.32	135
SRT6KRMXLT-IEC †	208V	6000/6000	8.3/2.3	SRT192RMBP	Hard Wire 3-wire (2PH + G)	(2) IEC Jumpers, (6) IEC 320 C13, (1) Hard Wire 3-wire (2PH + G), (4) IEC 320 C19	RJ-45 10/100 Base-T, RJ-45 Serial, SmartSlot, USB	4	6.85 x 17.0 x 28.32	135
SRT6KRMXLT-5KTF †	208V	6000/6000	8.3/2.3	SRT192RMBP	Hard Wire 3-wire (2PH + G)	(2) NEMA L6-20R, (12) NEMA 5-20R, (1) Hard Wire 3-wire (2PH + G), (2) NEMA L6-30R	RJ-45 10/100 Base-T, RJ-45 Serial, SmartSlot, USB	6	10.35 x 17.0 x 28.32	230
SRT8KXLT †	208V	8000/8000	14.4/5.2	SRT192BP2	Hard Wire 3-wire (2PH + G)	(1) NEMA L6-20R, (1) Hard Wire 3-wire (2PH + G), (2) NEMA L6-30R	RJ-45 10/100 Base-T, RJ-45 Serial, SmartSlot, USB	6	17.0 x 10.35 x 28.15	246

† Includes SmartConnect Port for cloud monitoring ‡ Preinstalled NMC

# Specifications by SKU

Part #	Input Voltage	Rating (VA/Watts)	Runtime (min) Half/Full Load	Extended Battery Packs	Input Connections	Output connections	Comm. ports	Rack Height	Dimensions (in) H x W x D	Net Weight (lb)
<b>Smart-UPS On-Line for Mission Critical Applications</b>										
SRT8KRMXLT	208V	8000/8000	14.4/5.2	SRT192RMBP2	Hard Wire 3-wire (2PH + G)	(1) Hard Wire 3-wire (2PH + G), (4) NEMA L6-20R, (2) NEMA L6-30R	RJ-45 10/100 Base-T, RJ-45 Serial, SmartSlot, USB	6	10.35 x 17.0 x 28.15	246
SRT8KXLT-IEC	208V	8000/8000	14.4/5.2	SRT192BP2	Hard Wire 3-wire (2PH + G)	(6) IEC 320 C13, (1) Hard Wire 3-wire (2PH + G), (4) IEC 320 C19, (3) IEC Jumpers	RJ-45 10/100 Base-T, RJ-45 Serial, SmartSlot, USB	6	17.0 x 10.35 x 28.15	246
SRT8KRMXLT-IEC	208V	8000/8000	14.4/5.2	SRT192RMBP2	Hard Wire 3-wire (2PH + G)	(4) IEC 320 C19, (3) IEC Jumpers, (6) IEC 320 C13, (1) Hard Wire 3-wire (2PH + G)	RJ-45 10/100 Base-T, RJ-45 Serial, SmartSlot, USB	6	10.35 x 17.0 x 28.15	246
SRT8KXLT-5KTF	208/240V	8000/8000	14.4/5.2	SRT192BP2	Hard Wire 3-wire (2PH + G)	(6) NEMA L6-20R, (2) NEMA L6-30R, (1) NEMA L14-30R, (8) NEMA 5-20R, (1) Hard Wire 3-wire (2PH + G)	RJ-45 10/100 Base-T, RJ-45 Serial, SmartSlot, USB	6	17.0 x 15.45 x 28.15	371
SRT8KXLT30	208V	8000/8000	14.4/5.2	SRT192BP2	Hard Wire 3-wire (2PH + G)	(6) NEMA L6-30R, (1) Hard Wire 3-wire (2PH + G)	RJ-45 10/100 Base-T, RJ-45 Serial, SmartSlot, USB	6	17.0 x 10.35 x 28.15	246
SRT8KRMXLT30	208V	8000/8000	14.4/5.2	SRT192RMBP2	Hard Wire 3-wire (2PH + G)	(6) NEMA L6-30R, (1) Hard Wire 3-wire (2PH + G)	RJ-45 10/100 Base-T, RJ-45 Serial, SmartSlot, USB	6	10.35 x 17.0 x 28.15	246
SRT8KRMXLT-5KTF	208V	8000/8000	14.4/5.2	SRT192RMBP2	Hard Wire 3-wire (2PH + G)	(1) NEMA L6-30R, (4) NEMA L6-20R, (1) Hard Wire 3-wire (2PH + G), (12) NEMA 5-20R	RJ-45 10/100 Base-T, RJ-45 Serial, SmartSlot, USB	8	13.85 x 17.0 x 28.15	341
SRT10KXLI	230V	10000/10000	11.5/3.8	SRT192BP2	Hard Wire 3-wire (1PH+N+G), Hard Wire 5-wire (3PH + N + G)	(6) IEC 320 C13, (4) IEC 320 C19, (1) Hard Wire 3-wire (H N + G), (3) IEC Jumpers	RJ-45 10/100 Base-T, RJ-45 Serial, SmartSlot, USB	6	17.0 x 10.35 x 28.15	246
SRT10KXLT30	208V	10000/10000	11.4/3.7	SRT192BP2	Hard Wire 3-wire (2PH + G)	(1) Hard Wire 3-wire (2PH + G), (6) NEMA L6-30R	RJ-45 10/100 Base-T, RJ-45 Serial, SmartSlot, USB	6	17.0 x 10.35 x 28.15	246
SRT10KXLT	208V	10000/10000	11.4/3.7	√	Hard Wire 3-wire (2PH + G)	(1) Hard Wire 3-wire (2PH + G), (4) NEMA L6-20R, (2) NEMA L6-30R	RJ-45 10/100 Base-T, RJ-45 Serial, SmartSlot, USB	6	17.0 x 10.35 x 28.15	246
SRT10KXLT-IEC	208V	10000/10000	11.4/3.7	SRT192BP2	Hard Wire 3-wire (2PH + G)	(4) IEC 320 C19, (3) IEC Jumpers, (6) IEC 320 C13, (1) Hard Wire 3-wire (2PH + G)	RJ-45 10/100 Base-T, RJ-45 Serial, SmartSlot, USB	6	17.0 x 10.35 x 28.15	246
SRT10KRMXLT-10KTF	208/240V	10000/10000	11.4/3.7	SRT192RMBP2	Hard Wire 3-wire (2PH + G)	(2) NEMA L14-30R, (2) NEMA L5-20R, (4) NEMA L6-20R, (2) NEMA L6-30R, (1) Hard Wire 3-wire (2PH + G)	RJ-45 10/100 Base-T, RJ-45 Serial, SmartSlot, USB	10	17.25 x 17.0 x 29.5	466
SRT10KRMXLT	208V	10000/10000	11.4/3.7	SRT192RMBP2	Hard Wire 3-wire (2PH + G)	(1) Hard Wire 3-wire (2PH + G), (4) NEMA L6-20R, (2) NEMA L6-30R	RJ-45 10/100 Base-T, RJ-45 Serial, SmartSlot, USB	6	10.35 x 17.0 x 28.15	246
SRT10KXLT-5KTF2	208V	10000/10000	11.4/3.7	√	Hard Wire 3-wire (2PH + G)	(4) NEMA L6-20R, (2) NEMA L14-30R, (1) Hard Wire 3-wire (2PH + G), (6) NEMA L6-30R, (16) NEMA 5-20R	RJ-45 10/100 Base-T, RJ-45 Serial, SmartSlot, USB	10	17.0 x 20.55 x 28.15	496
SRT10KRMXLT-5KTF2	208V	10000/10000	11.4/3.7	√	Hard Wire 3-wire (2PH + G)	(24) NEMA 5-20R, (4) NEMA L6-30R, (1) Hard Wire 3-wire (2PH + G)	RJ-45 10/100 Base-T, RJ-45 Serial, SmartSlot, USB	10	17.35 x 17.0 x 28.15	436
SRT10KRMXLT-IEC	208V	10000/10000	11.4/3.7	SRT192RMBP2	Hard Wire 3-wire (2PH + G)	(4) IEC 320 C19, (3) IEC Jumpers, (1) Hard Wire 3-wire (2PH + G), (6) IEC 320 C13	RJ-45 10/100 Base-T, RJ-45 Serial, SmartSlot, USB	6	10.35 x 17.0 x 28.15	246
SRT10KRMXLT30	208V	10000/10000	11.4/3.7	SRT192RMBP2	Hard Wire 3-wire (2PH + G)	(6) NEMA L6-30R, (1) Hard Wire 3-wire (2PH + G)	RJ-45 10/100 Base-T, RJ-45 Serial, SmartSlot, USB	6	10.35 x 17.0 x 28.15	246

† Includes SmartConnect Port for cloud monitoring    ‡ Preinstalled NMC

Life Is n



Explore APC Solutions at  
[apc.com](https://apc.com)

**Schneider Electric**

132 Fairgrounds Road  
West Kingston, RI 02892  
United States