

A sustainable energy efficient building is within your reach

EcoStruxure™ Energy Hub

Owning and operating a building is complex. Building energy management can be simple and effective to help you achieve your goals.



Comply with building energy codes

Energy Hub supports common building energy codes and standards such as ASHRAE 90.1, IECC, Title 24, etc. as well as state or local codes.



Achieve up to 30% energy savings

Energy Hub enables you to analyze energy usage by load type, building, floor, zone, and time period so you can identify waste and take action.

Generate tenant billing reports to create energy accountability to make sustainability a building-wide responsibility.



Ensure business continuity

Energy Hub enables you to improve reliability and availability of building energy with faster response time to electrical issues.

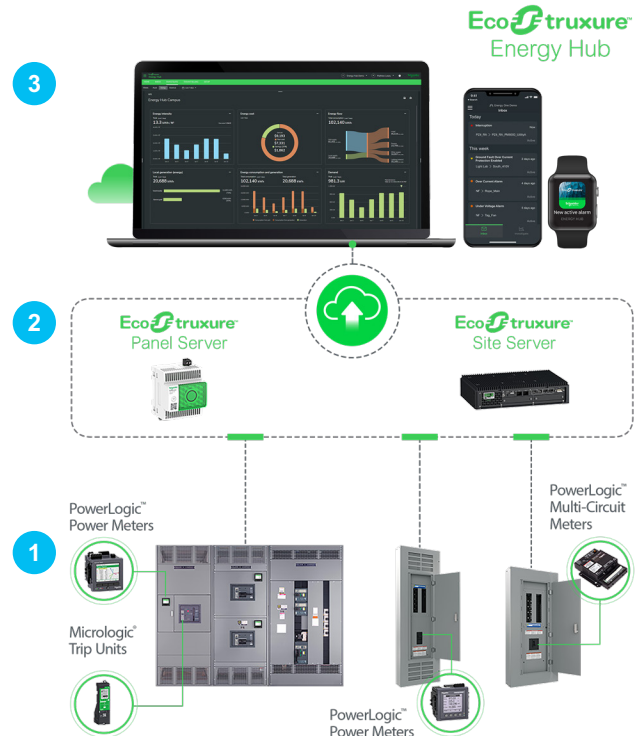


Reach your sustainability goals

Energy Hub helps to increase building value by differentiating your brand and making progress towards sustainability.

Energy Hub web or mobile app

Connect one or multiple sites



Energy insight at your fingertips

Getting started with EcoStruxure Energy Hub is simple and fast. It's as simple as 1-2-3.

- 1** Install smart meters, intelligent circuit breakers such as **PowerLogic** or **MicroLogic** – even 3rd party devices.
- 2** Connect through our simple and secure cloud gateways such as **EcoStruxure Panel Server** or **EcoStruxure Site Server**.
- 3** Login and setup your **EcoStruxure Energy Hub** application in minutes with intuitive drag-and-drop configuration.

EcoStruxure Energy Hub subscription plans

Subscription plan pricing is determined by the feature plan you choose, number of IoT devices you connect, and the duration (one- or three-year terms) - regardless of the number of sites. Contact your local Schneider Electric sales representative or partner for pricing, or reach out to our Customer Care Center.



Feature plan details

	ESSENTIAL (BETA)	ADVANCED	+ ADVANCED
Platform			
Secure cloud hosting (ISO27001 compliant)	●	●	●
Schneider Electric and 3rd party device support	●	●	●
Historical data storage (with active subscription)	●	●	●
Number of users	Unlimited	Unlimited	Unlimited
Email and mobile push notifications (100 per device credit/month)	●	●	●
Technical support and online user community	●	●	●
Available with iOS and Android mobile app	●	●	●
Mobile site manager experience	●	●	●
Mobile operations and maintenance experience		●	●
Web browser portal		●	●
Multi-site views and data aggregation		●	●
Energy and sustainability			
Water, gas, and electricity monitoring	●	●	●
Peak demand monitoring and alerts	●	●	●
Energy over-consumption threshold alerts	●	●	●
Building energy code compliance (monitoring and reporting)**		●	●
Building area usage ranking		●	●
Multi-site comparison and ranking		●	●
Energy intensity and weather normalization		●	●
Energy usage during/outside business hours		●	●
Energy usage insights homepage		●	●
Utility and renewables energy flow		●	●
Co ₂ equivalent monitoring and tracking		●	●
Tenant energy billing			
Tenant bill-run configuration with simple rates		●	●
Tenant bill history		●	●
Export tenant bills to PDF		●	●
Electrical power monitoring			
Basic electrical alerts (interruption, overcurrent)	●	●	●
Power quality alarms (sag/swell, transient, over/under voltage, THD)			●
Circuit breaker trip alarms			●
Electrical cable over-heating alarms			●
Live electrical measurement monitoring and trending			●
Digital electrical one-line diagram			●
Integrations			
Data API (available data according to active subscription)		Option	Option

*HACCP - Hazard Analysis Critical Control Point

**Monitor energy by load type, report on energy usage vs target according to applicable requirements of supported energy regulations (ASHRAE 90.1, IECC, CA Title 24, LEED, NABERS AU, and other local code requirements may be supported. Verify above features with code requirements.)

Compatible gateways and devices

Connected devices are accounted for in your Energy Hub subscription through device credits. A device in Energy Hub refers to a physical, standalone data measuring device such as a sensor, power, water or gas meter, or intelligent circuit breaker. Each of these individual devices count towards one device credit, purchased as quantities of your subscription feature plan. Default compatibility of devices and gateways are listed in the table below.

Additional device support continues to grow — consult our [official device support list here](#).

Supported devices

Category	Device type	Panel Server Universal (PAS600 / PAS800)	Site server
Environmental Sensors	TH110	●	●*
	CL110	●	●*
	PowerLogic PM3000 series	●	●
	PowerLogic EM3500 series (3550/3555)	●	●
	PowerLogic EM4200	●	●
Embedded Metering	Acti-9 iEM series (31xx, 32xx, 33xx, 34xx, 35xx)	●	●
	Micrologic X (MasterPactT MTZ)	●	●
	Micrologic P, H, E, A (legacy MasterPacT)	●	●
	PowerLogic PM5000 series	●	●
	PowerLogic PM8000 series	●**	●
Branch Circuit Meters	PowerLogic ION9000 series	●**	●
	Legacy Powerlogic (PM2xx/6xx/7xx/8xx, CM2xxx/3xxx/4xxx, ION7xxx)*	●	●
	PowerLogic HDPM6000	●	●
	PowerLogic BCPM	●	●
	PowerLogic EM4900	●	●
3rd Party Devices	3rd Party Water, Gas and Electricity Meters via Pulse inputs	●	●
	3rd Party Modbus Water, Gas and Electricity Meters	●	●

Support in this table refers to compatibility of device with Energy Hub via supported gateways. Device compatibility with the gateways alone may vary.

● Supported ●* Requires downstream gateway ●** Limited support for Modbus data only ● Not supported

*may need custom model using EPC Web

How do I get it?

Energy Hub can be ordered through your Schneider Electric Sales Representative or an authorized distributor. [Find distributor](#)

List of commercial references:

Plan	Part number	Description	
Essential (BETA)*	PSWEOESSPLT12A	Energy Hub Essential Subscription	1 Device Credit - 1 Year
	PSWEOESSPLT36A	Energy Hub Essential Subscription	1 Device Credit - 3 Years
Advanced	PSWEOADVPLT12A	Energy Hub Advanced Subscription	1 Device Credit - 1 Year
	PSWEOADVPLT36A	Energy Hub Advanced Subscription	1 Device Credit - 3 Years
+Advanced	PSWEOPADPLT12A	Energy Hub + Advanced Subscription	1 Device Credit - 1 Year
	PSWEOPADPLT36A	Energy Hub + Advanced Subscription	1 Device Credit - 3 Years
API (option)	PSWEOAPIOLT12A	Energy Hub API Add On Subscription	1 Device Credit - 1 Year
	PSWEOAPIOLT36A	Energy Hub API Add On Subscription	1 Device Credit - 3 Years

* Currently in BETA, commercial availability pending.

Visit the website to learn more, request a demo or contact us.

se.com/EcoStruxure-Energy-Hub

Life Is On



Schneider Electric Industries SAS
70 Mechanic Street
Foxboro, MA 02035
Toll free: + 1 877 342 5173