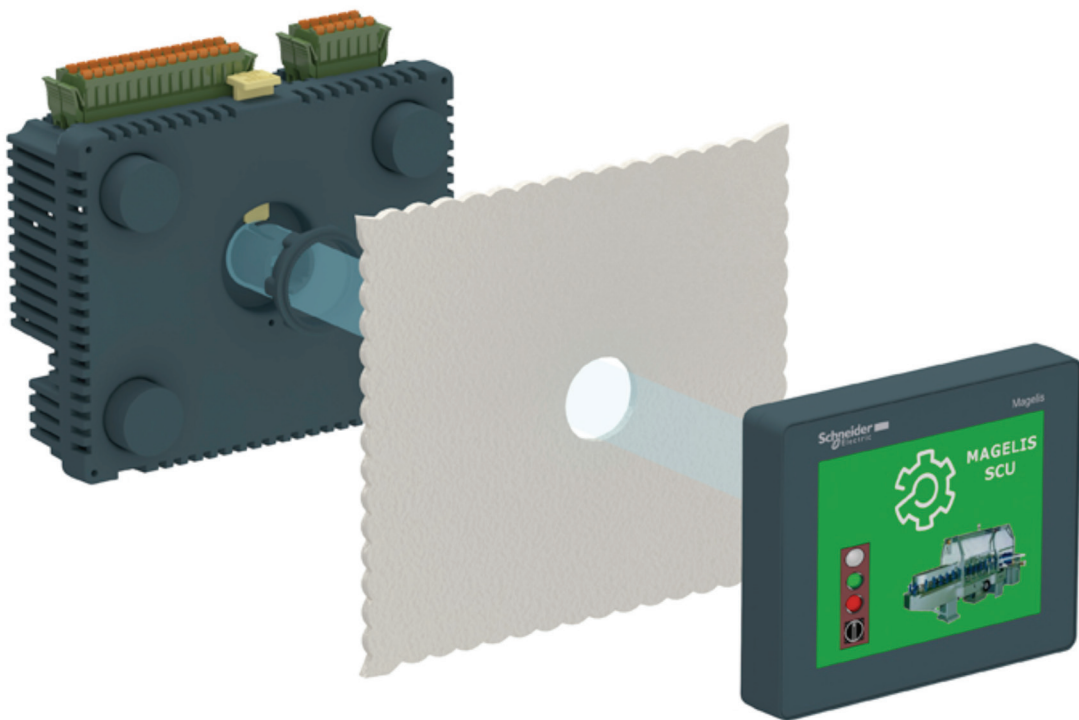


Easy control for your small machines and applications

The new generation of small HMI controllers
Magelis SCU



Vijeo Designer



SoMachine

Schneider
Electric™

Discover the innovative HMI that saves space, time, and cost

Up to
30%
savings

The integrated design of Magelis SCU delivers maximum functionality while keeping installation easy:

Magelis SCU is a modular HMI controller that delivers adequate functionality for control of small machines and simple processes, while saving up to 30% in installation and ownership costs throughout machine life cycle.

> Reduce costs

Magelis SCU substantially reduces wiring and costs when compared to solutions with a separate PLC and HMI. Magelis SCU embeds all the key functions in one modular solution without additional cost.

- Digital I/O, including HSC, PTO/PWM, and analog I/O, including temperature inputs,
- Communication via ports: USB (linking to tower lights and illuminated switches), serial, Ethernet, and CANopen,
- Crystal-clear display to be more user-friendly for nice viewing and for accurate control even with gloves.

> Minimize installation time and effort

Cut-out free: for quick installation of display module, as easy as a simple pushbutton

Quick: The controller module is mounted directly in a 22mm diameter hole, or snapped on a DIN rail via an ingenious remote cable (3m or 5m).

Screwdriver-free: for easy I/O connection on removable terminal block built in with spring clamps resistant to vibration.

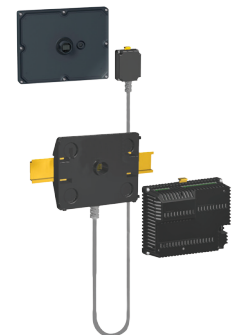
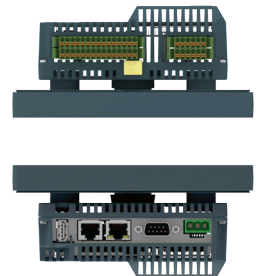
> Save space

Magelis SCU helps you save the space that is normally reserved for a PLC, making it suitable even for installations with very limited space.

Get remote access to production data

With Vijeo Design'Air*, you increase the availability of your operations. This application for smart phones and tablets, available now from the App Store and Google Play, gives you remote access to a fully operable mirror-view of your application. You can also connect remotely via WebGate option for free, using a PC browser to visualize and control your system. Magelis SCU can also send emails on event for remote warnings.

*Available 2014



Magelis SCU, powered by SoMachine™

Magelis SCU is part of the Flexible Control Solution for OEM based on the the SoMachine software, supporting six programming languages (FBD, ST, SFC, LD, IL, CFC) and compliant with IEC 61131-3.



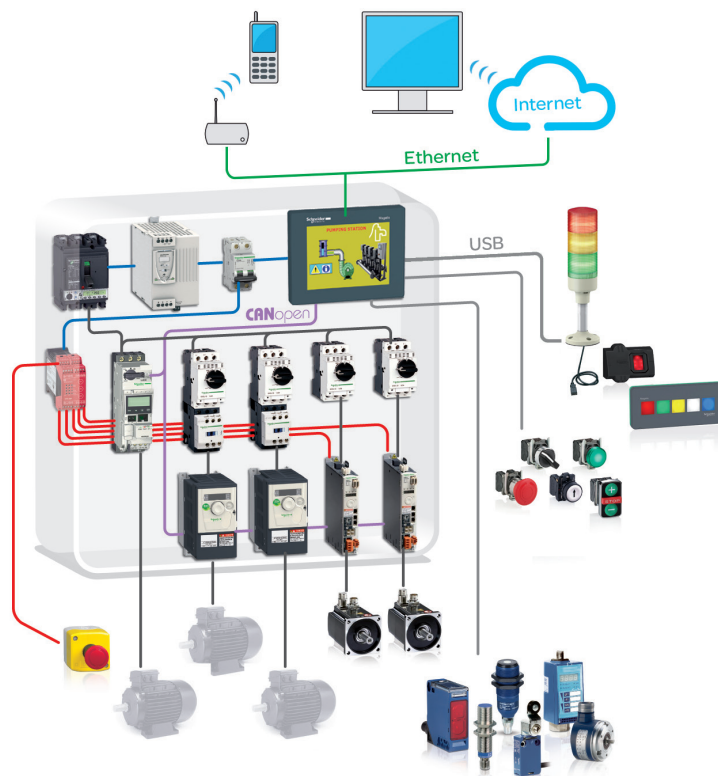
Benefit from pre-defined templates and object libraries



Define your variables once and maintain

a single project file

With SoMachine, Magelis SCU customers can benefit from the expertise and know-how of Schneider Electric through a rich set of templates (programs, architectures, etc.), libraries (function blocks, etc.), and integrated expert functions.



Magelis SCU for machine control

Ideal for simple packaging and machine tool applications:

- capacity of one axis management, with 100kHz high-speed counters and fast output PTO/PWM 50kHz
- remote device control with CANopen Master extension capability



Packaging



Machine tool

Magelis SCU for process control

Ideal for pumping and HVAC:

- analog I/O with tension/current signal
- large library of SoMachine function blocks on PID loops
- temperature inputs for TC, PT100, and PT1000 probes





HVAC



Pumping

> Selection guide: Magelis SCU small HMI controllers

	For machine control	For process control
		
Display	LCD TFT (65K colours) 3.5" and 5.7" touch screen	
Memory	128 Mo Flash EPROM	
Integrated I/O	14 x 24 VDC digital inputs	6 x 24 VDC digital inputs
	2 high speed counter (HSC) inputs 100 kHz	2 high speed counter (HSC) inputs 100 kHz
	8 digital relay outputs	6 digital relay outputs
	2 pulse train source transistor outputs 50 kHz	2 pulse train source transistor outputs 50 kHz
		2 x 13-bit analogue inputs (Voltage/current)
	2 x 16-bit analogue temperature inputs (TC/PT100-PT1000)	
	2 x 12-bit analogue outputs (Voltage/current)	
Communication downloadable protocols	Uni-TE, Modbus, Modbus TCP/IP (1) and for PLC brands: Mitsubishi, Omron, Allen-Bradley and Siemens	
• Asynchronous serial link	RS 232C/RS 485 (COM1)	
• USB ports	1 Host type A + 1 Device type mini-B	
• Buses and networks	1 CANopen master, and 1 Ethernet TCP/IP (10BASE-T/100 BASE-TX)	
• Printer link	USB port for parallel printer	
Design software	SoMachine V3.1 mini on Windows XP Professional and Windows 7 Professional 32/64-bit + VijeoDesigner 6.1 SP3	
Magelis references	Size 3.5"	HMISCU6A5
	Size 5.7"	HMISCU8A5
		HMISCU6B5
		HMISCU8B5
Cable accessories		
Remote USB port location	Host type A	XBTZGUSB
	Device type mini B	HMIZSUSBB
Remote Controller module	L = 3 m	HMIZSURDP
	L = 5 m	HMIZSURDP5
Modules spare parts		
Rear controller module	HMISAC	HMISBC
Front display module Size 3.5"	HMIS65 (HMIS65W without logo)	
Front display module Size 5.7"	HMIS85 (HMIS85W without logo)	
Configuration software		
SoMachine V3.1 minimum	MSDCHNSFN31 (+ trial licence 30 days)	
	MSDCHNLMUA (1 / single) MSDCHNLMTA (10 / team) MSDCHNLMFA (100 / facility)	
Promotional pack		
Pack HMISCU8B5 + SoMachine single licence	VJDSTKSCU	

Make the most of your energySM

Schneider Electric Industries SAS

Head Office
35, rue Joseph Monier
CS 30323
92506 Rueil-Malmaison Cedex
France

www.schneider-electric.com

Design: Schneider Electric
Photos: Schneider Electric

©2013 Schneider Electric. All Rights Reserved.
All other trademarks are property of their respective owners.

998- 1195190_GMA-GB

04/2013

DIA5ED1130202EN