

GENERAL NOTES

- FLOOR MOUNTED ENCLOSURE.
TYPE 12 CONSTRUCTED FROM CODE GAUGE STEEL.
FINISH: ANSI 61 GRAY POLYESTER SEMI GLOSS ELECTROSTATIC POWDER.
- EXTERIOR DOOR HAS A PADLOCKABLE HANDLE WITH 3 POINT LATCH.
- DESIGNED FOR FRONT ACCESS.
- RECOMMENDED CLEARANCES: FRONT: 42" REAR: NONE

SYSTEM NOTES

- SYSTEM RATING: 800 AMPS.
SHORT CIRCUIT RATING: 65,000 RMS SYM @ 480V.
THE EMERGENCY SOURCE INPUT MUST BE PROTECTED BY A REMOTE OVERCURRENT PROTECTION DEVICE AS LISTED ON THE MARKINGS ON THE TRANSFER SWITCH.
- ALL BUS IS SILVER-PLATED COPPER, BASED ON 1000A PER SQ. IN. DENSITY.
- GROUND: 20% RATED.
- NEUTRAL: 100% RATED.
- APPLICABLE LABEL(S): U.L. 891, SUITABLE ONLY FOR USE AS SERVICE EQUIPMENT.

TRANSFER SWITCH

- H FRAME AUTOMATIC TRANSFER SWITCH 800A.
- TRANSFER SWITCH RATING: 800 AMPS.
SHORT CIRCUIT RATING WHEN PROTECTED BY A CIRCUIT BREAKER
TIME RESPONSE, MAXIMUM 0.05 SECONDS: 50,000 RMS SYM @ 480V.
SPECIFIC BREAKER RATING: 65,000 RMS SYM @ 480V.
- A FULL RATED NEUTRAL CONNECTION FOR EACH SOURCE AND THE LOAD IS OPTIONAL. WHEN PROVIDED IT IS IN ONE OF THE FOLLOWING FORMATS.
 - SOLID NEUTRAL
 - SWITCHED NEUTRAL POLE
 - OVERLAPPING NEUTRAL POLE
- UL 1008

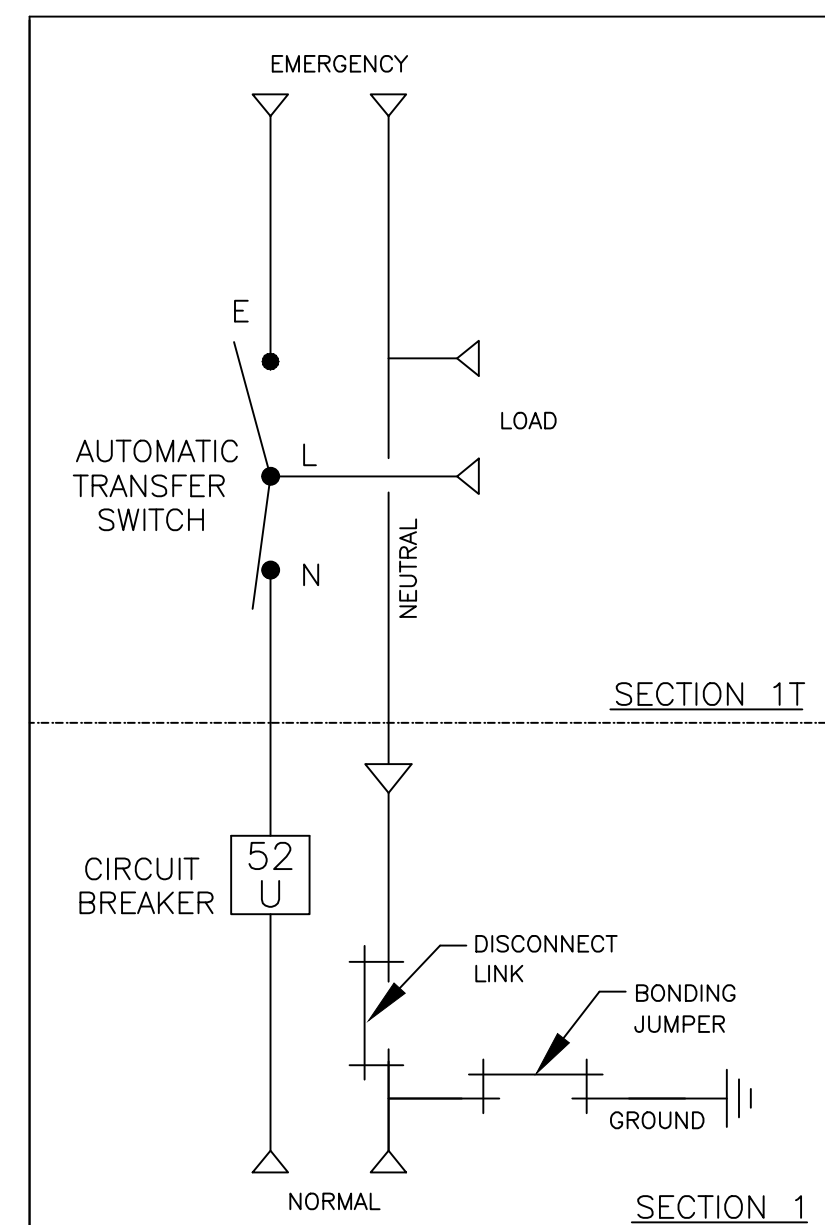
TERMINATIONS 800A

- SUPPLIED WITH MECHANICAL (SCREW TYPE) LUGS FOR CU/AL CABLE.
NORMAL(52U): (3) 3/0 - 500MCM PER PHASE & NEUTRAL
LOAD: (4) 1/0 - 600MCM PER PHASE & NEUTRAL
EMERGENCY: (4) 1/0 - 600MCM PER PHASE & NEUTRAL
GROUND: (12) 1/0 - 600MCM
A. SUITABLE WIRE BENDING SPACE IS PROVIDED AS PER NEC.
- OPTIONAL LUGS MAY BE SUPPLIED.

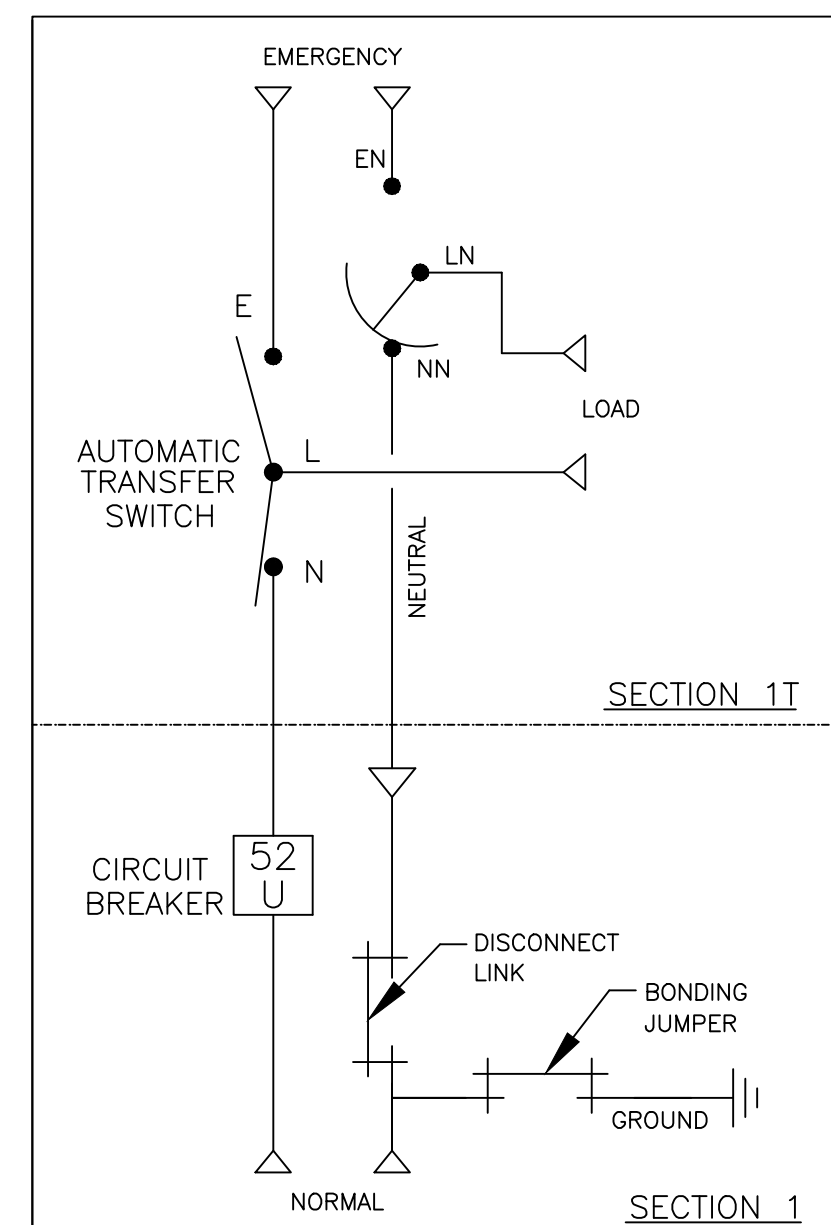
CIRCUIT BREAKER: ITEM 52U

- SQUARE "D" 80% RATED TYPE 'MJL' MOLDED CASE CIRCUIT BREAKER 800AF/800AT.
ELECTRONIC TRIP UNIT WITH A FIXED LONG TIME AND AN ADJUSTABLE INSTANTANEOUS SETTING.
SHORT CIRCUIT RATING: AIC 65,000 RMS SYM @ 480V.
- U.L. 489

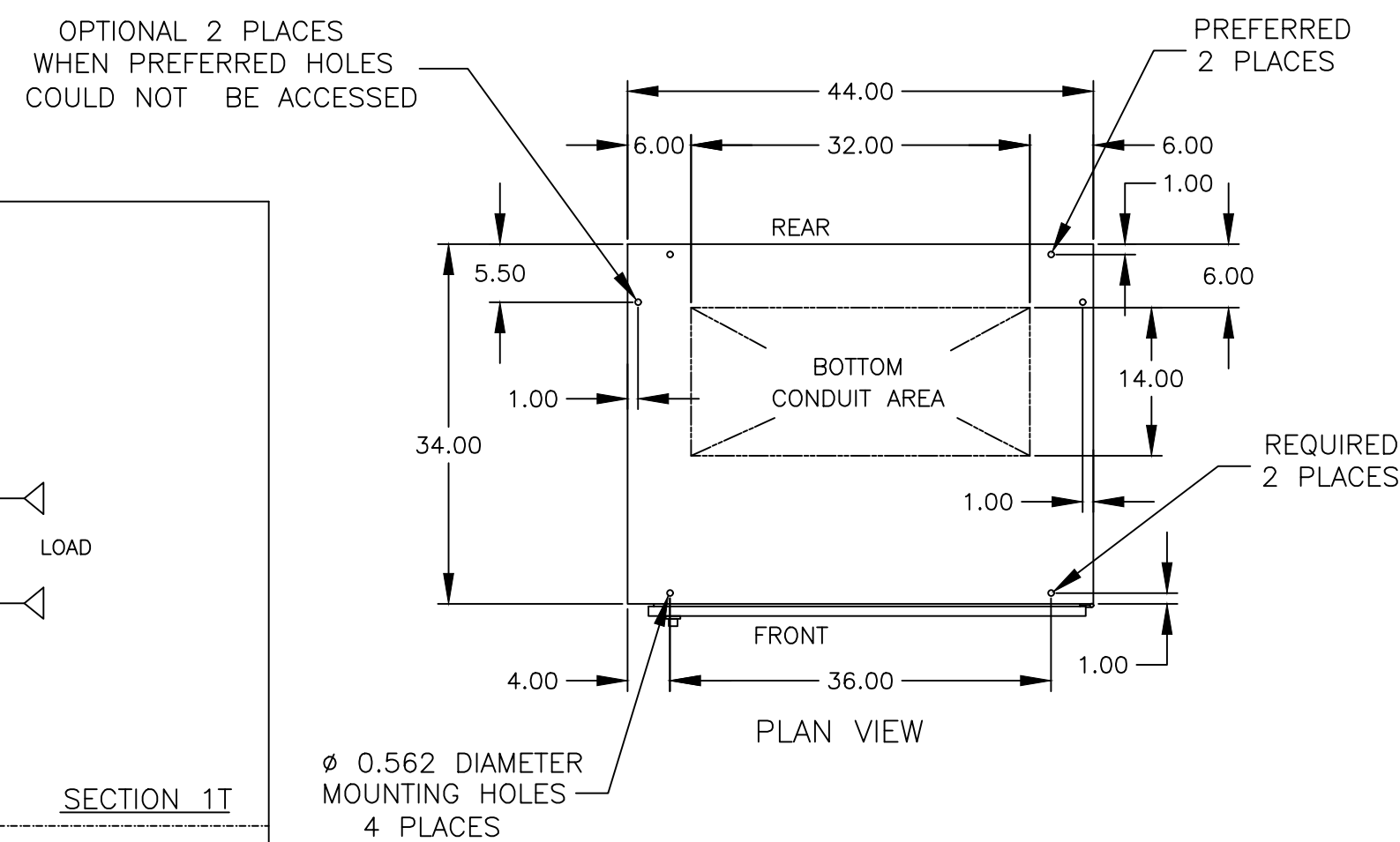
ONE LINE DIAGRAMS



(WITH SOLID NEUTRAL)



(WITH SWITCHED NEUTRAL)



B	303475	NIK	MCH	05/03/23
SEE ECN				
A	293045	CHS	RN	12/27/21
SEE ECN				
	275187	VAK	RN	10-11-18

PROJECT NAME:		REV. TO SHEET	ECN NO.	BY	APP.	DATE
OUTLINE		MOUNTING				
HAUS 800A, MJL SERVICE ENTRANCE BREAKER ON NORMAL						
TYPE 12 100 X 44 X 34, SECTION 1 & 1T						
DRAWN BY	VAK	DATE	10-11-18	MANUFACTURING TOLERANCES TO BE IN ACCORDANCE WITH ASCO PROCEDURE MP-1-003. FOR PLASTIC PARTS SEE MP-1-055	ASSEM. REF. NO.	COMPUTER GENERATED DRAWING
CHECKED	RN			PROPERTY OF ASCO POWER TECHNOLOGIES. USE PERMITTED FOR OUR WORK ONLY. ALL RIGHTS OF DESIGN OR INVENTION ARE RESERVED.		SCALE 1/16" = 1" SIZE DS
PROJECT APPROVAL						DWG. NO. 882322-052
FINAL APPROVAL						ASCO® ASCO POWER TECHNOLOGIES, LP. FLOHAM PARK, NEW JERSEY 07932 U.S.A. DRAWING B ECN NO. 303475 SHEET 1 OF 1