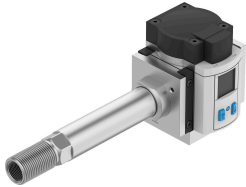


Flow sensor SFAM-62-1000L-TG12-2SA-M12

Part number: 565375

FESTO



Data sheet

Feature	Value
Certification	RCM compliance mark c UL us - Recognized (OL)
CE marking (see declaration of conformity)	As per EU EMC directive As per EU RoHS directive
UKCA marking (see declaration of conformity)	To UK instructions for EMC To UK RoHS instructions
Certificate issuing authority	UL E322346
Note on materials	RoHS-compliant
Measured variable	Volume Volumetric flow rate
Flow direction	Unidirectional From left to right
Measuring principle	Thermal
Method of measurement	Heat loss
Flow measuring range start value	10 l/min
Flow measuring range end value	1000 l/min
Operating pressure	1.6 MPa 16 bar
Operating medium	Compressed air as per ISO 8573-1:2010 [7:4:4] Nitrogen
Temperature of medium	0 °C...50 °C
Ambient temperature	0 °C...50 °C
Nominal temperature	23 °C
Accuracy of flow rate	± (3% o.m.v. + 0.3% FS)
Zero point repetition accuracy in ± %FS	0.2 %FS
Repetition accuracy margin in ± %FS	0.8 %FS
Temperature co-efficient margin in ± %FS/K	typ. 0. 1%FS/K
Pressure influence of margin in ±%FS/bar	0.5 %FS/b.
Switching output	2 x PNP or 2 x NPN switchable
Switching function	Window comparator or threshold value comparator, adjustable
Switching element function	N/C contact/N/O contact switchable
Max. output current	100 mA
Analog output	4 - 20 mA

Feature	Value
Flow characteristic curve, start value	0 l/min
Flow characteristic curve, end value	1000 l/min
Output characteristic curve initial value	4 mA
End value output characteristic curve	20 mA
Max. load resistance of current output	500 Ohm
Short-circuit protection	yes
Overload protection	Available
DC operating voltage range	15 V...30 V
Reverse polarity protection	for all electrical connections
Electrical connection 1, connection type	Plug
Electrical connection 1, connection technology	M12x1 A-coded as per EN 61076-2-101
Electrical connection 1, number of pins/wires	5
Electrical connection 1, type of mounting	Screw-type lock
Max. cable length	30 m
Type of mounting	Line installation
Mounting position	Horizontal
Pneumatic connection	G1/2
Product weight	1100 g
Housing material	Die-cast aluminum PA-reinforced
Display type	Illuminated LCD, multi-color
Displayable unit(s)	l l/min m ³ scf scfm
Setting options	Teach-in Via display and pushbuttons
Protection against tampering	PIN code
Setting range threshold value	1 %...100 %
Setting range hysteresis	0 %...90 %
Degree of protection	IP65
Pressure drop	100 mbar
Protection class	III
Corrosion resistance class (CRC)	2 - Moderate corrosion stress
LABS (PWIS) conformity	VDMA24364-B1/B2-L