

Solenoid valve

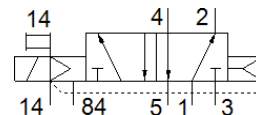
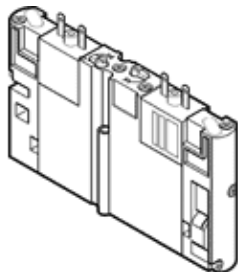
CPA14-M1H-5LS

Part number: 173940
Product to be discontinued

FESTO

This type is suitable for vacuum.

Type to be discontinued. Available until 2018. See Support Portal for alternative products.



Data sheet

| Feature | Value |
|---|---|
| Valve function | 5/2 monostable |
| Type of actuation | electrical |
| Width | 14 mm |
| Standard nominal flow rate | 600 l/min |
| Working pressure | -0.9 ... 10 bar |
| Design structure | Piston slide |
| Type of reset | Air spring |
| Nominal size | 5 mm |
| Exhaust-air function | not throttleable |
| Sealing principle | soft |
| Assembly position | Any |
| Manual override | with accessories, detenting |
| Type of piloting | Piloted |
| Flow direction | non reversible |
| Pilot pressure | 3 ... 8 bar |
| b value | 0.28 |
| C value | 2.7 l/sbar |
| Switching time off | 29 ms |
| Switching time on | 17 ms |
| Operating medium | Compressed air in accordance with ISO8573-1:2010 [7:4:4] |
| Note on operating and pilot medium | Lubricated operation possible (subsequently required for further operation) |
| Corrosion resistance classification CRC | 2 |
| Medium temperature | -5 ... 50 °C |
| Ambient temperature | -5 ... 50 °C |
| Mounting type | with through hole |
| Pneumatic connection, port 1 | Subbase |
| Pneumatic connection, port 2 | Subbase |
| Pneumatic connection, port 3 | Subbase |
| Pneumatic connection, port 4 | Subbase |
| Pneumatic connection, port 5 | Subbase |
| Materials information for seals | NBR |
| Materials information, housing | Aluminum die cast |