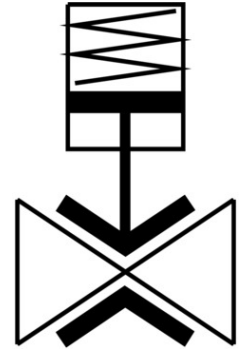


# Pinch valve VZQH-2H-6-S5S5-V4V4EPM-6

Part number: 8187048

FESTO



[PDF](#) General operating condition

## Data sheet

Feature	Value
Structural design	Pinch valve
Actuation type	Manual
Sealing principle	Soft
Mounting position	Any
Type of mounting	Line installation
Fitting connection	Clamp as per DIN 32676 series A
Nominal width DN	6
Valve function	2/2, closed, monostable
Flow direction	Reversible
Medium pressure	0 MPa ... 0.6 MPa
Medium pressure	0 bar ... 6 bar
Medium pressure	0 psi ... 87 psi
Nominal pressure of fitting PN	10
Burst pressure	1.6 MPa
Burst pressure	16 bar
Burst pressure	232 psi
Reset method	Mechanical spring
Type of control	Direct
Symbol	00992981
Medium	Compressed air as per ISO 8573-1:2010 [:-:1] Water
Max. viscosity	4000 mm <sup>2</sup> /s
Temperature of medium	-5 °C ... 100 °C
Ambient temperature	-5 °C ... 60 °C
Storage temperature	6 °C ... 8 °C
Flow rate Kv	0.7 m <sup>3</sup> /h
On switching time	<1000 ms
Switching time off	<1000 ms
Note on materials	RoHS-compliant
LABS (PWIS) conformity	VDMA24364 zone III

<b>Feature</b>	<b>Value</b>
Housing material	High-alloy stainless steel
Material number of housing	1.4408
Housing cover material	High-alloy stainless steel
Material no. housing cover	1.4404 / AISI 316L
Seals material	FPM HNBR
Shut-off element material	EPDM
Product weight	427 g
For use in the food industry	See supplementary material information