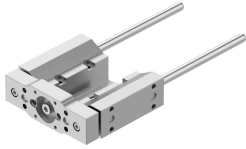


Guide unit EAGF-P2-KF-32-100

Part number: 8158029

FESTO



Data sheet

Feature	Value
Size	32
Stroke	100 mm
Reversing backlash	0 μ m
Mounting position	Any
Guide	Recirculating ball bearing guide
Structural design	Guide
Max. acceleration	25 m/s ²
Max. speed	1 m/s
Corrosion resistance class (CRC)	0 - No corrosion stress
LABS (PWIS) conformity	VDMA24364 zone III
Degree of protection	IP40
Ambient temperature	0 °C...60 °C
Max. force Fy	160 N
Max. force Fy static	355 N
Max. force Fz	160 N
Max. force Fz static	355 N
Max. torque Mx	6 Nm
Max. static moment Mx	13 Nm
Max. torque My	4 Nm
Max. static moment My	9 Nm
Max. torque Mz	4 Nm
Max. static moment Mz	9 Nm
Displacement force	1.6 N
Moving mass at 0 mm stroke	170 g
Basic weight with 0 mm stroke	613 g
Additional weight per 10 mm stroke	7.9 g
Additional moving mass per 10 mm stroke	7.9 g
Center of gravity of moving mass with 0 mm stroke	26 mm
Center of gravity of moving mass with 10 mm stroke	4.3 mm
Type of mounting	With internal thread
Note on materials	RoHS-compliant

Feature	Value
Material of guide component	Tempered steel Hard-chrome-plated
Housing material	Wrought aluminum alloy Anodized
Material of yoke plate	Wrought aluminum alloy Anodized