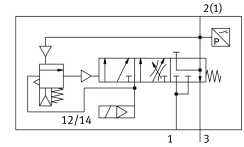


Soft start valve VABF-S6-1-P5A4S2S-G12-1T5-PA

Part number: 8067409

FESTO



Data sheet

Feature	Value
Max. positive test pulse with 0 signal	2000 µs
Max. negative test pulse on 1 signal	1200 µs
Width dimension	41 mm
Valve size	40 mm
Vibration resistance	Transport application test with severity level 2 as per FN 942017-4 and EN 60068-2-6
Shock resistance	Shock test with severity level 2 as per FN 942017-5 and EN 60068-2-27
Actuation type	Electrical
Sealing principle	Soft
Mounting position	Any
Manual override	None
Structural design	Piston gate valve
Reset method	Mechanical spring
Type of control	Pilot-controlled
Pilot air supply port	Internal
Flow direction	Non-reversible
Valve function	Pressure build-up Exhaust
Switching element function	N/C contact
Lap	Underlap
Note on forced dynamization	Switching frequency at least once a month
Signal status display	Yellow LED, valve control Green LED, pressure switch, exhausted status
Switching position sensing	Via pressure switch, exhausted status
Operating pressure	0.2 MPa...1 MPa 2 bar...10 bar
Changeover pressure	Not adjustable Switching point between 50 - 75% of operating pressure
Standard nominal flow rate pressurization	3000 l/min
Standard nominal flow rate exhaust air	3300 l/min
Duty cycle	100%
Nominal operating voltage DC	24 V
Coil characteristics	24 V DC: 1.6 W

Feature	Value
Permissible voltage fluctuations	+/- 10 %
Operating medium	Compressed air as per ISO 8573-1:2010 [7:4:4]
Information on operating and pilot media	Operation with oil lubrication not possible
Corrosion resistance class (CRC)	0 - No corrosion stress
LABS (PWIS) conformity	VDMA24364-B1/B2-L
Temperature of medium	-5 °C...50 °C
Degree of protection	IP65
Pilot medium	Compressed air as per ISO 8573-1:2010 [7:4:4]
Ambient temperature	-5 °C...50 °C
MTTF, subcomponent	452 years, pressure switch
Product weight	466 g
Electrical actuation	Fieldbus
Electrical connection	Plug-in
Type of mounting	On sub-base
Pneumatic connection 3	G1/2
Note on materials	RoHS-compliant
Seals material	HNBR NBR
Housing material	Wrought aluminum alloy
Material of screws	Steel, galvanized