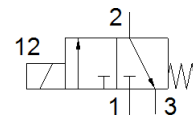
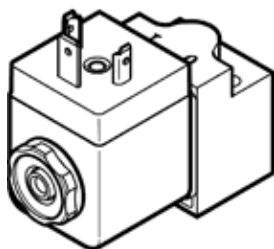


Solenoid valve

MD-3/2-24DC-PI-IA-EX

Part number: 546022
Product to be discontinued

FESTO



Data sheet

Feature	Value
Valve function	3/2 closed, monostable
Type of actuation	electrical
Width	30 mm
Standard nominal flow rate	13 l/min
Working pressure	1 ... 8 bar
Design structure	Poppet seat
Type of reset	mechanical spring
Protection class	IP65
Nominal size	0.6 mm
Grid dimension	42 mm
Exhaust-air function	not throttleable
Based on the standard	ISO 15218
Sealing principle	soft
Assembly position	Any
Conforms to standard	ISO 15218
Manual override	None
Type of piloting	direct
Flow direction	non reversible
Freedom from overlap	No
b value	0.52
C value	0.075 l/sbar
Switching time off	50 ms
Switching time on	9 ms
Duty cycle	100%
Required current consumption	27 mA
Max. input power	1.6 W
Max. input voltage	28 V
Max. input current	115 mA
effective inductivity	negligibly small
effective capacity	negligibly small
ATEX category Gas	II 2G
Explosion ignition protection type Gas	Ex ia IIC T6 X
ATEX category Dust	II 2D
Explosion ignition protection type Dust	Ex tD A21 IP65 T80°C X
Explosion-proof ambient temperature	-20°C ≤ Ta ≤ +50°C
Certificate issuing department	PTB 09 ATEX 2043
Operating medium	Compressed air in accordance with ISO8573-1:2010 [7:4:4]
Note on operating and pilot medium	Lubricated operation possible (subsequently required for further operation)
CE symbol (see declaration of conformity)	according to EU-Ex protection guideline (ATEX)
Corrosion resistance classification CRC	2
Medium temperature	-20 ... 70 °C
Product weight	140 g
Electrical connection	Per DIN EN 175301-803 Design A
Mounting type	On subbase

Feature	Value
	with through hole
Pneumatic connection, port 1	Subbase
Pneumatic connection, port 2	Subbase
Pneumatic connection, port 3	M5
Materials note	Conforms to RoHS
Materials information for seals	HNBR VMQ