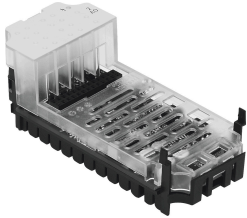


Analogue module CPX-2AA-U-I

Part number: 526170

FESTO



Data sheet

Feature	Value
Dimensions W x L x H	(incl. interlinking block and connection system) 50 mm x 107 mm x 50 mm
Product weight	49 g
Ambient temperature	-5 °C...50 °C
Storage temperature	-20 °C...70 °C
Degree of protection	Depends on manifold block
Corrosion resistance class (CRC)	1 - Low corrosion stress (when installed)
Max. cable length	30 m Shielded
LABS (PWIS) conformity	VDMA24364-B2-L
Housing material	PA-reinforced PC
LED indicators	1 group diagnostics
Diagnostics	Wire break per channel Limit value violation per channel Output signal short circuit per channel Actuator supply short circuit Parameterization error Undervoltage of outputs
No. of outputs	2
Parameterization	Data format Fail-safe modes per channel Forcing per channel Limit value monitoring per channel Idle mode per channel Measured value smoothing Signal range per channel Response to short circuit Wire break monitoring per channel
Internal cycle time	4 ms
DC operating voltage range	18 V...30 V
Nominal operating voltage DC	24 V
Intrinsic current consumption at nominal operating voltage	Typ. 100 mA
Data format	12 bit + sign Scalable to 15 bits

Feature	Value
Repetition accuracy	0.05 % at 25 °C
Basic error limit at 25°C	±0.5 %
Operating error limit related to the ambient temperature range	±0.6 %
Sensor type	0 - 10 V 0 - 20 mA 4 - 20 mA
Electrical isolation between channels	no
Electrical isolation between channel and internal bus	Yes, without using the internal sensor supply
Fuse protection (short circuit)	Internal electronic fuse