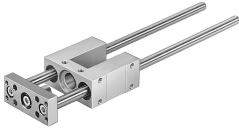


# Guide unit FEN-12/16- -GF

Part number: 19168

FESTO



## Data sheet

Feature	Value
Size	12/16
Stroke	1 mm...200 mm
Mounting position	Any
Guide	Sliding guide
Structural design	Guide
Explosion prevention and protection	Zone 1 (ATEX) Zone 2 (ATEX) Zone 21 (ATEX) Zone 22 (ATEX)
LABS (PWIS) conformity	VDMA24364-B2-L
Ambient temperature	-20 °C...80 °C
Displacement force	15 N
Additional moving mass per 10 mm stroke	12 g
Basic weight with 0 mm stroke	490 g
Additional weight per 10 mm stroke	12 g
Center of gravity of moving mass with 0 mm stroke	40 mm
Center of gravity of moving mass with 10 mm stroke	4.9 mm
Type of mounting	With internal thread
Note on materials	RoHS-compliant
Material of guide component	High-alloy steel
Housing material	Wrought aluminum alloy, anodized
Material of yoke plate	Wrought aluminum alloy, anodized