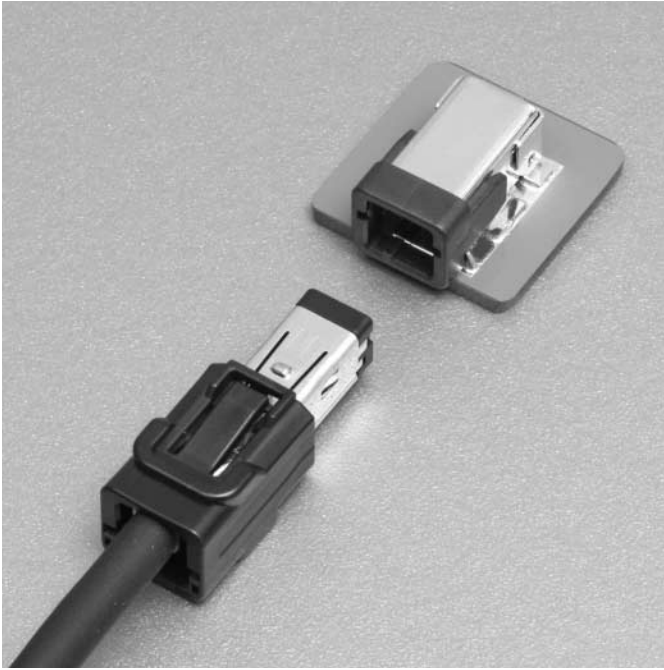


# ASU CONNECTOR

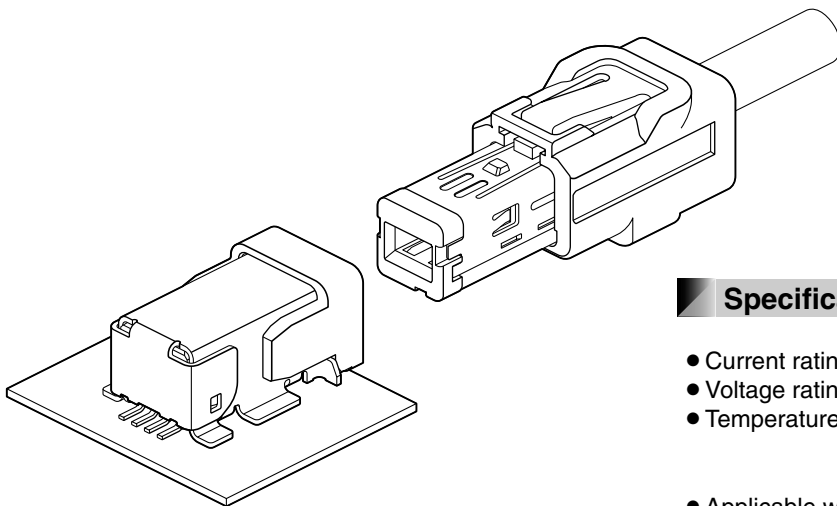
Board-to-wire/High speed transmission



## High Speed Differential Transmission

This connector is for high speed transmission which is suitable for automotive equipment such as ETC/DSRC, navigation system.

Applicable for surface mounting technology.



## Features

### ●High Reliability

Terminal structure for automotive equipments.  
This small connector enables the retention force of more than 98N with unique reinforcement tabs structure.

### ●High Speed Transmission

Corresponding to USB2.0 (480Mbps).

### ●Compact Design

Connector width: 10.7mm/ Height: 7.7mm

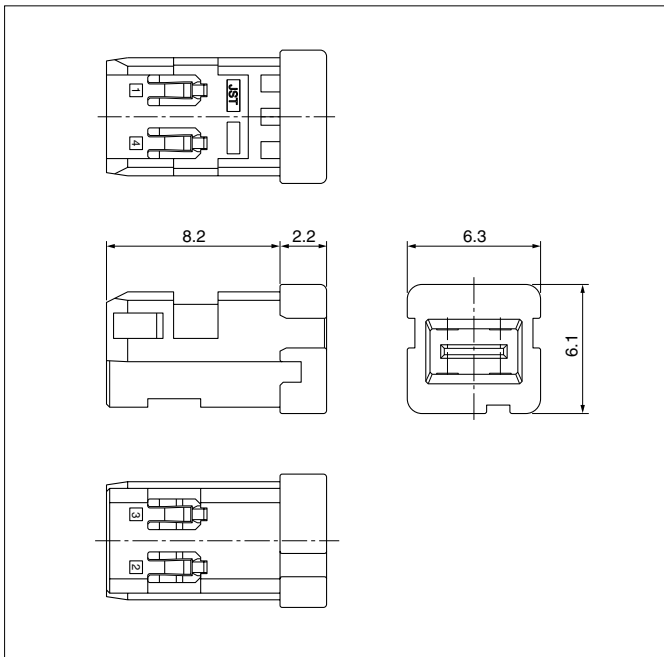
### ●Noise Performance

Excellent performance by metal shell shielding structure.

## Specifications

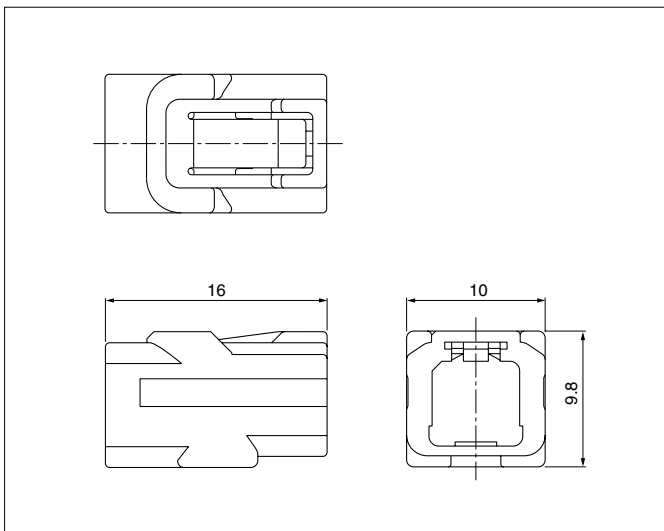
- Current rating: 1 A AC, DC (AWG #28)
  - Voltage rating: 30 V AC, DC
  - Temperature range: -40°C to +105°C  
(including temperature rise in applying electrical current)
  - Applicable wire: Inner conductor / AWG #28 to AWG #26  
Sheath /  $\phi$ 4 mm  
\* Contact JST for detail about applicable wire.
  - Differential impedance: 90  $\Omega$   $\pm$  20  
(Transmission characteristic conforms to USB2.0 (480 Mbps))
  - Circuits: 4-circuit
  - Keying features: 4 kinds of keying features  
\* Only one kind of keying features is under mass production.
  - PC board mounting direction: Side entry (SMT)
- \* Compliant with ELV/RoHS.  
\* Contact JST for details.

## Inner housing of cable side



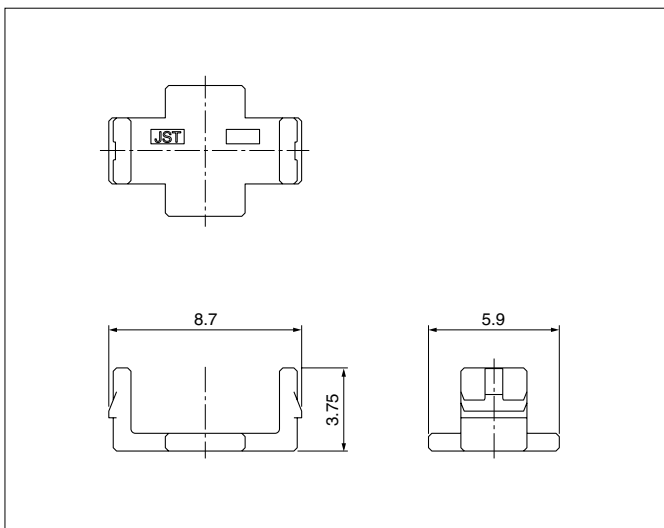
Circuits	Model No.	Q'ty/box	Housing Color
4	<b>ASU-PHN4-K</b>	500	Black
Material and Finish			
Thermoplastic resin			

## Outer housing of cable side



Model No.	Q'ty/box	Housing Color
<b>ASU-PHG4-K</b>	250	Black
Material and Finish		
Thermoplastic resin		

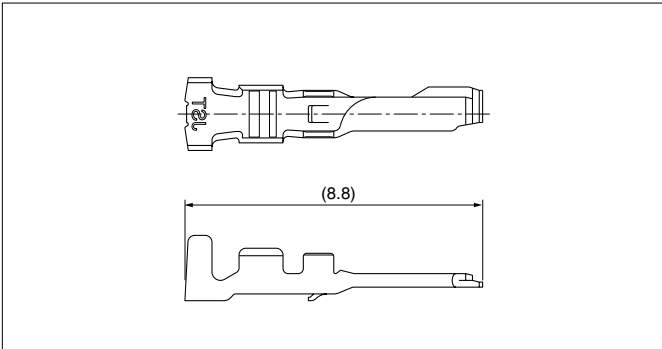
## Retainer of cable side



Model No.	Q'ty/box	Housing Color
<b>ASU-PRT-H</b>	2,000	Gray
Material and Finish		
Thermoplastic resin		

# ASU CONNECTOR

## Female terminal

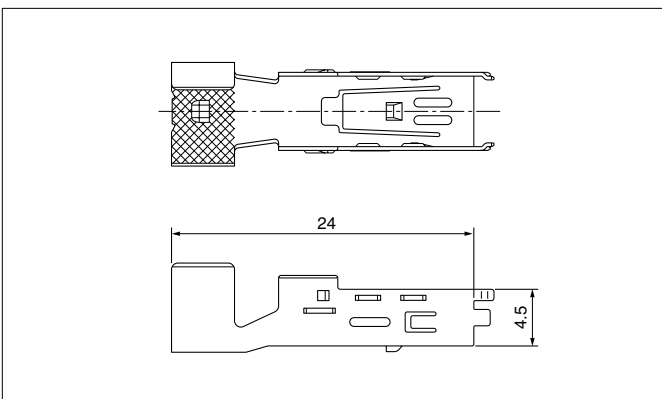


Model No.	Applicable wire range		Q'ty/reel
	Conductor (mm <sup>2</sup> )	Insulation O.D. (mm)	
<b>SASU-002GD-P0.15</b>	0.08 to 0.13	0.8 to 1.0	10,000

### Material and Finish

Copper alloy, nickel-undercoated, Contact area; gold-plated  
Barrel area; tin-plated

## Shell of cable side

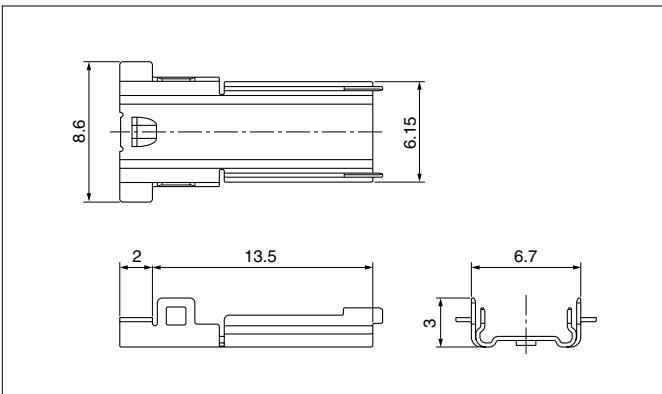


Model No.	Q'ty/reel
<b>ASU-PS4-3RPT-1</b>	1,200

### Material and Finish

Copper alloy, tin-plated

## Cover shell of cable side

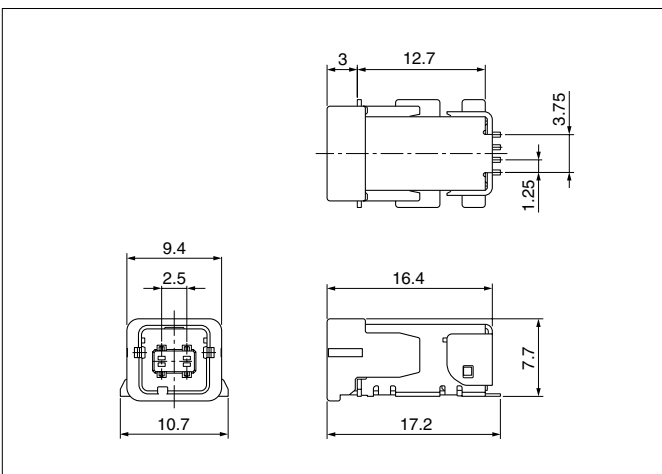


Model No.	Q'ty/reel
<b>ASU-PCS4-3RPT</b>	5,000

### Material and Finish

Copper alloy, tin-plated

## Male connector



Circuits	Model No.	Q'ty/reel
4	<b>ASU-4RASM-12T1-K1-TR</b>	500

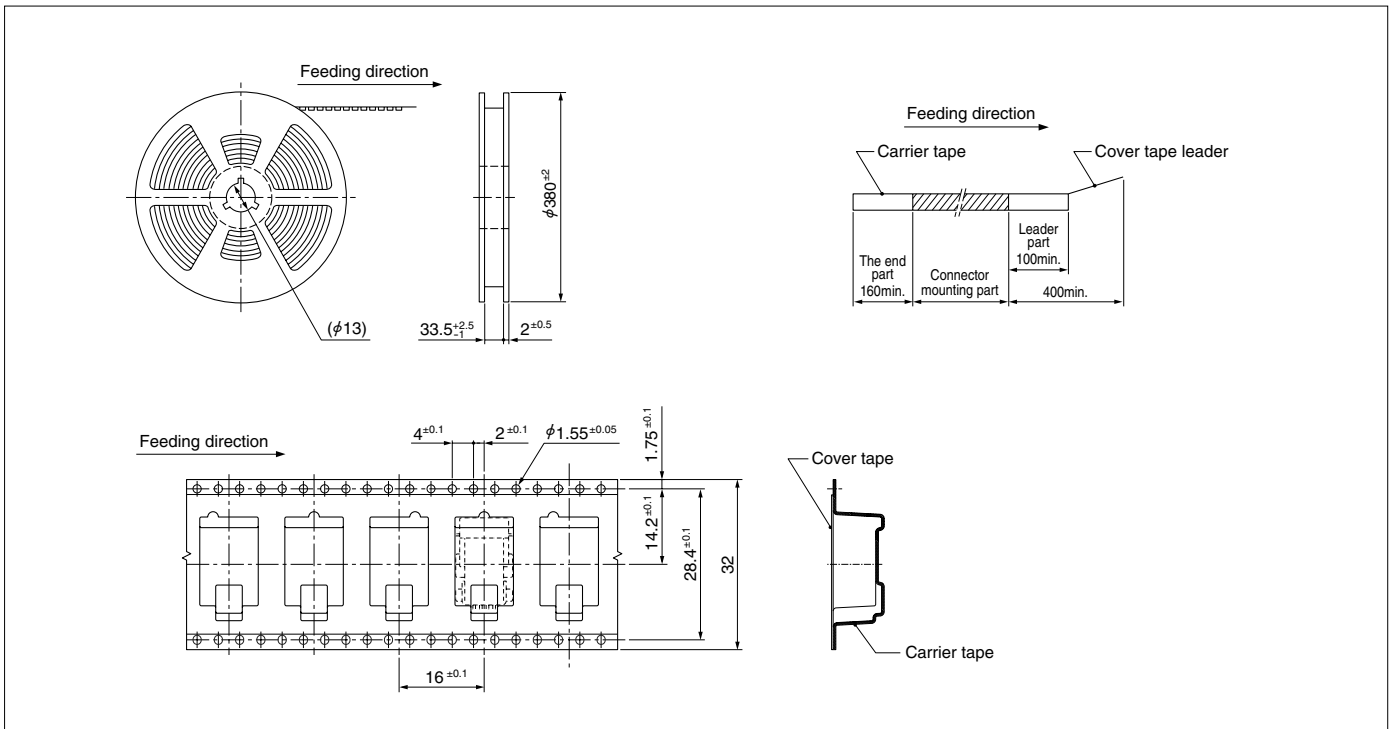
### Material and Finish

Inner housing: Heat resisting resin, Black  
Outer housing: Heat resisting resin, Black  
Contact: Copper alloy, nickel-undercoated, Contact are; gold-plated  
Solder tail; tin-plated

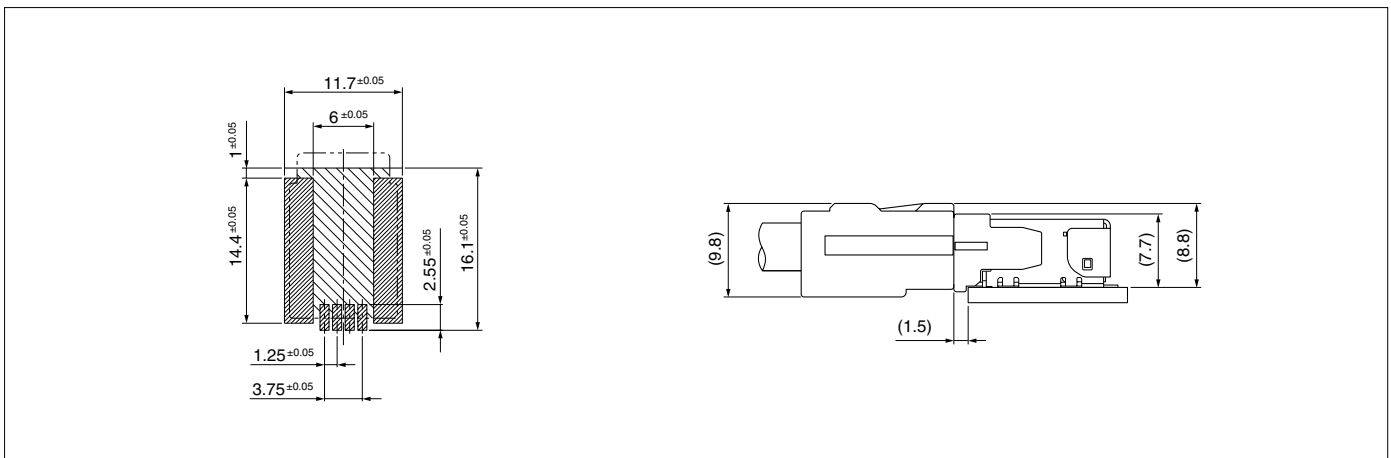
Shell: Copper alloy, copper-undercoated, tin-plated

Note: This product displays (LF)(SN) on a label.

## Taping Specification



## PC board layout, Assembly layout



Note: 1. Tolerances are non-cumulative:  $\pm 0.05$  mm for all centers.  
2. The dimensions above should serve as guideline. Contact JST for details.

## Crimping machine, Applicator

Strip terminal	Crimping machine	Crimp applicator MKS-L	
		Dies	Crimp applicator with dies
SASU-002GD-P0.15	AP-K2N	MK/SASU-002-015	APLMK SASU-002-015

Note: When crimping operation is conducted using an applicator and die set other than the above, JST cannot guarantee the performance of the terminal.

## Jig

Jig	Hand crimp tool
Contact insertion jig	IT-CN-ASU
Shell insertion jig	H3-SIT-ASU
Shell crimping jig	H2-CP-ASU
Cover shell insertion jig	H3-CVIT-ASU
Retainer insertion jig	IT-RET-ASU
Hand press	HPD-M2A

Note: Contact JST for details.