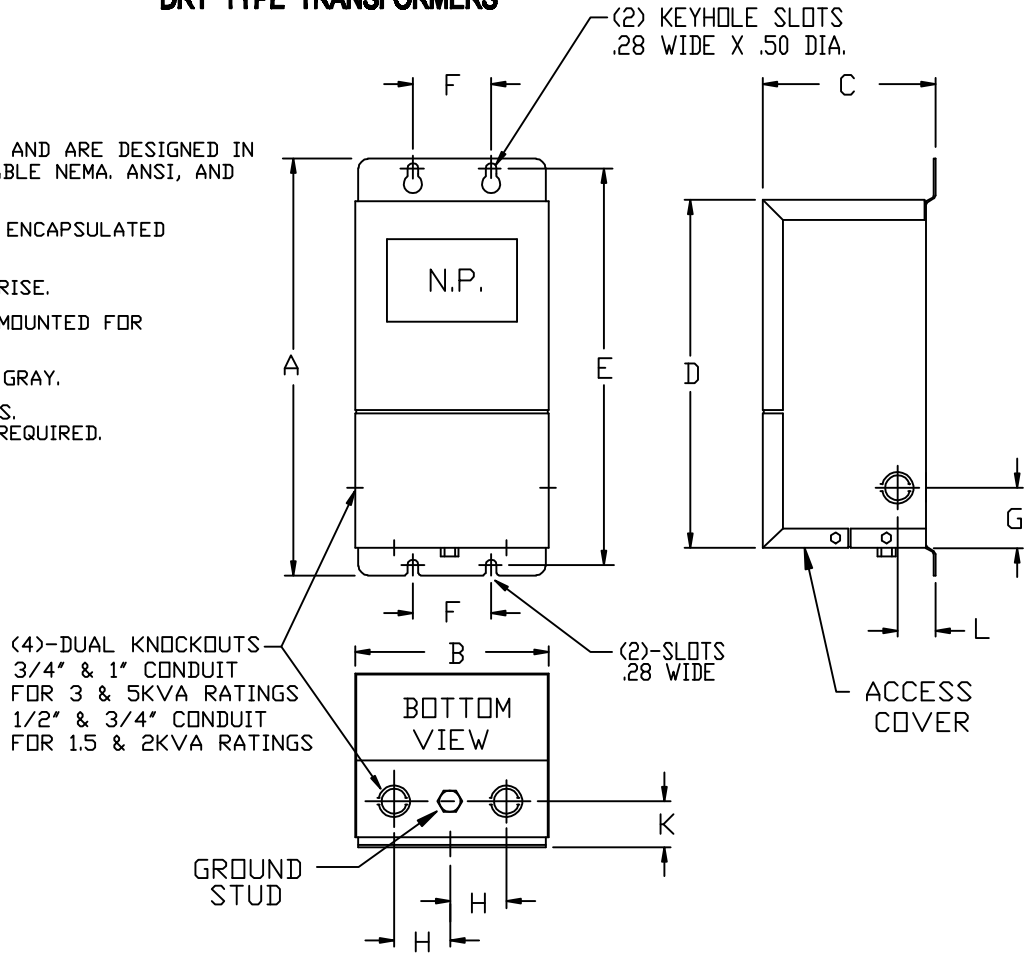


# SIEMENS DRY TYPE TRANSFORMERS

**NOTES:**

1. ALL UNITS ARE UL LISTED AND ARE DESIGNED IN ACCORDANCE WITH APPLICABLE NEMA, ANSI, AND IEEE STANDARDS.
2. THESE TRANSFORMERS ARE ENCAPSULATED CONSTRUCTION.
3. TRANSFORMERS ARE 135°C RISE.
4. TRANSFORMERS ARE WALL MOUNTED FOR INDOOR / OUTDOOR USE.
5. PAINT COLOR IS ANSI #61 GRAY.
6. MOUNTING HOLES LOCATIONS.  
1/4" MOUNTING HARDWARE REQUIRED.



KVA	DIMENSIONS IN INCHES											NET WT. LBS. COPPER	NET WT. LBS. ALUMINUM		
	A	B	C	D	E	F	G	H	K	L					
1.5	12.50	6.69	5.34	10.56	12.00	2.25	1.50	1.75	1.50	1.50				30	28
2	12.50	6.69	5.34	10.56	12.00	2.25	1.50	1.75	1.50	1.50				34	32
3	14.56	7.56	7.15	12.68	14.12	3.50	1.75	2.00	1.88	1.88				58	55
5	14.56	7.56	7.15	12.68	14.12	3.50	1.75	2.00	1.88	1.88				88	83

KVA	QTY.	CATALOG NO.	VOLTAGE		TAPS	DRAWING
			PRIMARY	SECONDARY		
						<input type="checkbox"/> APPROVAL
						<input type="checkbox"/> RECORD
						<input type="checkbox"/> OTHER

CUST.	DWN. BY:	Siemens Industry, Inc.  GENERAL PURPOSE TRANSFORMERS SINGLE-PHASE, 600 VOLTS CLASS, 60 HZ.
	DATE:	
JOB	CHK. BY:	
P.O.	DATE:	
TIE	APVD. BY:	
S.O.	DATE:	
DWG. NO. J-19		REV. F
		DATE 02/16/11