

SIEMENS

Security information **1**

License terms and conditions **2**

Installation notes **3**

SIMATIC




SIMATIC Automation Tool SDK V4.0 SP3 Update 1 Installation notes

Installation Manual

Legal information

Warning notice system

This manual contains notices you have to observe in order to ensure your personal safety, as well as to prevent damage to property. The notices referring to your personal safety are highlighted in the manual by a safety alert symbol, notices referring only to property damage have no safety alert symbol. These notices shown below are graded according to the degree of danger.

 DANGER
indicates that death or severe personal injury will result if proper precautions are not taken.
 WARNING
indicates that death or severe personal injury may result if proper precautions are not taken.
 CAUTION
indicates that minor personal injury can result if proper precautions are not taken.
NOTICE
indicates that property damage can result if proper precautions are not taken.


If more than one degree of danger is present, the warning notice representing the highest degree of danger will be used. A notice warning of injury to persons with a safety alert symbol may also include a warning relating to property damage.

Qualified Personnel

The product/system described in this documentation may be operated only by **personnel qualified** for the specific task in accordance with the relevant documentation, in particular its warning notices and safety instructions. Qualified personnel are those who, based on their training and experience, are capable of identifying risks and avoiding potential hazards when working with these products/systems.

Proper use of Siemens products

Note the following:

 WARNING
Siemens products may only be used for the applications described in the catalog and in the relevant technical documentation. If products and components from other manufacturers are used, these must be recommended or approved by Siemens. Proper transport, storage, installation, assembly, commissioning, operation and maintenance are required to ensure that the products operate safely and without any problems. The permissible ambient conditions must be complied with. The information in the relevant documentation must be observed.

Trademarks

All names identified by ® are registered trademarks of Siemens AG. The remaining trademarks in this publication may be trademarks whose use by third parties for their own purposes could violate the rights of the owner.

Disclaimer of Liability

We have reviewed the contents of this publication to ensure consistency with the hardware and software described. Since variance cannot be precluded entirely, we cannot guarantee full consistency. However, the information in this publication is reviewed regularly and any necessary corrections are included in subsequent editions.

Table of contents

- 1 Security information..... 4**
- 2 License terms and conditions 5**
- 3 Installation notes..... 6**
 - 3.1 Operating system and software support..... 6
 - 3.2 Operating environment 7
 - 3.3 Downloading from Siemens Industry Online Support..... 7
 - 3.4 Installing from the self-extracting .exe file..... 8
 - 3.5 Optional automated install..... 8
 - 3.6 Getting help 9
 - 3.7 Updating your version of the SDK from the TIA Software Updater 9
- Index..... 11**

Security information

Siemens provides products and solutions with industrial security functions that support the secure operation of plants, systems, machines and networks.

In order to protect plants, systems, machines and networks against cyber threats, it is necessary to implement – and continuously maintain – a holistic, state-of-the-art industrial security concept. Siemens' products and solutions constitute one element of such a concept.

Customers are responsible for preventing unauthorized access to their plants, systems, machines and networks. Such systems, machines and components should only be connected to an enterprise network or the internet if and to the extent such a connection is necessary and only when appropriate security measures (e.g. firewalls and/or network segmentation) are in place.

For additional information on industrial security measures that may be implemented, please visit (<https://www.siemens.com/industrialsecurity>).

Siemens' products and solutions undergo continuous development to make them more secure. Siemens strongly recommends that product updates are applied as soon as they are available and that the latest product versions are used. Use of product versions that are no longer supported, and failure to apply the latest updates may increase customers' exposure to cyber threats.

To stay informed about product updates, subscribe to the Siemens Industrial Security RSS Feed visit (<https://www.siemens.com/cert>).

License terms and conditions

By installing the SIMATIC Automation Tool SDK, you are agreeing to the End User License Agreement (EULA). You also accept the security information on safe operation of the product. By installing, you are also agreeing to the Open Source and Third Party License conditions. You can view these terms and conditions by running the full installation setup. Do not use the automated installation feature (Page 8) until you have reviewed and agree to all terms and conditions as described in the setup dialogs of the non-automated installation.

Installation notes

3.1 Operating system and software support

Microsoft Windows 64-bit operating systems support

The SIMATIC Automation Tool SDK works with the following 64-bit operating systems:

- Windows 10 Home Version 1909
- Windows 10 Home Version 2004
- Windows 10 Home Version 2009/20H2
- Windows 10 Professional Version 1909
- Windows 10 Professional Version 2004
- Windows 10 Professional Version 2009/20H2
- Windows 10 Enterprise Version 1909
- Windows 10 Enterprise Version 2004
- Windows 10 Enterprise Version 2009/20H2
- Windows 10 Enterprise 2016 LTSC
- Windows 10 Enterprise 2019 LTSC
- Windows Server 2016 Standard (full installation)
- Windows Server 2019 Standard (complete installation)

Install all Microsoft Security updates for your operating system as available.

Siemens does not guarantee that the SIMATIC Automation Tool is compatible with other operating systems and does not provide technical support for any unlisted operating systems.

Virtual machine software support

The SIMATIC Automation Tool SDK works with the following VM (Virtual Machine) software:

- VMware vSphere Hypervisor (ESXi) 6.7 or higher
- VMware Workstation 15.5.0 or higher
- VMware Player 12.5.5 (WinCC only)
- VMware Player 15.5.0 or higher
- Microsoft Hyper-V Server 2019 or higher

The SIMATIC Automation Tool SDK might work with others.

Virus scanner and security software support

Siemens has verified that the SIMATIC Automation Tool SDK works with the following virus scanner and security software:

- Trend Micro Office Scan 12.0
- McAfee Endpoint Security (ENS) 10.6
- Windows Defender
- Qihoo 360 "Safe Guard 12.1" + "Virus Scanner"

The SIMATIC Automation Tool SDK might work with others.

Language support

The SIMATIC Automation Tool SDK User Guide is available in the following languages:

- English
- German
- French
- Spanish
- Italian
- Chinese Simplified

Communication

The SIMATIC Automation Tool SDK supports communication with Siemens devices using Ethernet.

3.2 Operating environment

Apply the following Windows operating system settings:

- Disable hibernation mode when using the SIMATIC Automation Tool SDK. Entering hibernation mode while online connections are open or while accessing project data through a network can cause errors.
- To avoid errors, set the power saving options for the operating system to never put the computer to sleep. This ensures that a timer does not automatically trigger hibernation. Do not manually trigger hibernation mode during a communication task.

3.3 Downloading from Siemens Industry Online Support

To install the SIMATIC Automation Tool SDK V4.0 SP3 Update 1, you must have a prior SDK V4.x installation.

3.4 Installing from the self-extracting .exe file

Installing and using the SIMATIC Automation Tool SDK

You can download the SIMATIC Automation Tool SDK from the Siemens Industry Online Support (SIOS) Web page (<https://support.industry.siemens.com/cs/us/en/view/98161300>).

To download the SIMATIC Automation Tool SDK, follow these steps:

1. Double click the SIMATIC_Automation_Tool_SDK_V4_0_SP3_UPD1.exe file from the Siemens Industry Online Support Web page (<https://support.industry.siemens.com/cs/us/en/view/98161300>) and follow the on-screen directions. You have two choices on the download operation:
 - Save SIMATIC_Automation_Tool_SDK_V4_0_SP3_UPD1.exe to a location on your computer. If you do not specify a file location, Windows saves the file in your Downloads folder. You can later navigate to this location and double-click the .exe file to run the self-extracting installer.
 - Run the self-extracting installer.
2. Follow the procedure in Installing from the self-extracting .exe file (Page 8) to install the product.

3.4 Installing from the self-extracting .exe file

To install the SIMATIC Automation Tool SDK from the self-extracting .exe file, follow these steps:

1. If the setup is not already running, double-click the SIMATIC_Automation_Tool_SDK_V4_0_SP3_UPD1.exe file that you downloaded.
2. Follow the displayed instructions to extract the files and install the SIMATIC Automation Tool SDK. You have the following choices when you begin the setup:
 - Extract the setup files without installing: You can later navigate to the folder where you extract the installation files and click the Start.exe file to begin the installation. Alternatively, you can perform an automated installation (Page 8) of the files at this location.
 - Delete extracted files on exit: The setup extracts the files and guides you through the installation. When you complete the installation, the setup deletes the extracted files. Do not select this option if you want to keep the files for future installs.

The setup guides you step by step through the installation process.

3.5 Optional automated install

You can install the SIMATIC Automation Tool SDK from the command line. The automated install requires no user interaction. The silent option of the automated install does not display installation dialogs.

If you install the SIMATIC Automation Tool SDK by automated installation, you are agreeing to all license terms. Review the license terms in the setup dialogs (Page 8) before performing an automated installation of the SIMATIC Automation Tool SDK.

If you did not delete the extracted installation files, you can find a description of the automated installation process in the folder where you extracted the files. The automated install documentation is at the following location:

Documents\<language folder>\PEAutoInstall<language extension>.chm

You can also find the same instructions within your SIMATIC Automation Tool SDK installation folder:

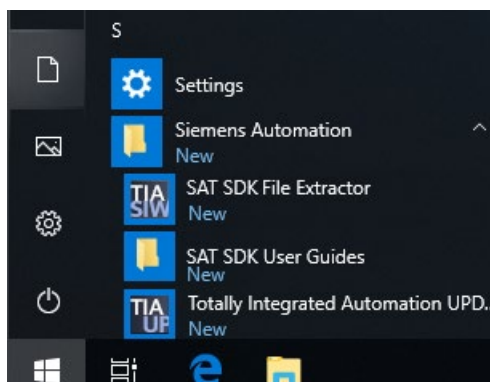
Documents\<language folder>\PEAutoInstall<language extension>.chm

Note that the automated installation provides the following user interface languages regardless of your automated install language options:

- English
- French
- German
- Italian
- Spanish
- Chinese Simplified

3.6 Getting help

After you install the SIMATIC Automation Tool SDK, you can find the user guide for your language from the Start menu.



Open the SAT SDK User Guides folder to navigate to your user guide.

3.7 Updating your version of the SDK from the TIA Software Updater

The SIMATIC Automation Tool SDK includes the TIA Software Updater for installing future service packs and updates. You can download SIMATIC Automation Tool software updates from Siemens if your programming device is connected to the Internet.

3.7 Updating your version of the SDK from the TIA Software Updater

To use the TIA Software Updater to update your existing SIMATIC Automation Tool SDK to the latest version, follow these steps:

1. Open the Totally Integrated Automation UPDATER from the Start menu. If updates are available for the SIMATIC Automation Tool SDK, you can see them from the Software tab. Wait while the updater finds and displays available software versions.
2. If an update exists for the SIMATIC Automation Tool SDK, click the Download button for the entry. The new version begins to download.

You see a progress indicator while the software downloads. When the download completes, the "Install" button is active and the "Download" button changes to "Downloaded".

3. Click the Install button to install the downloaded software. The setup guides you through the installation procedure.

Index

A

Automated install, 8

H

Help system, 9

Hibernation mode, 7

I

Installing from the .exe file, 8

O

Operating system and software support, 6

P

Power saving options, 7

S

Siemens Industry Online Support, 8

Silent option for automated install, 8

Software updater, 9

T

TIA Software Updater, 9

U

User Guide, 9