

## 30/60A SAFETY SW INTERNAL SERVICE ENTRANCE SHIELD KIT

Item: HSK212BA, HSK21BA & HSK22BA  
For use with: 30 & 60 AMP GENERAL DUTY,  
VBII SAFETY SWITCH

### Installation Instructions

⚠ <b>Danger</b>	⚠ <b>Peligro</b>	⚠ <b>Danger</b>
 <b>Hazardous Voltage.</b> <b>Will cause death or serious injury.</b> Turn off and lock out all power supplying this equipment before working on this device. Replace all covers before power supplying this device is turned on.	 <b>Tensión peligrosa.</b> <b>Puede causar la muerte o lesiones graves.</b> Desenergice totalmente el equipo antes de instalar o darle servicio. Reemplace todas las barreras y cubierta antes de energizar el interruptor.	 <b>Tension dangereuse.</b> <b>Danger de mort ou risque de blessures graves.</b> Mettre hors tension et cadenasser l'alimentation avant d'intervenir sur cet appareil. Remettez tous les couvercles en place avant de remettre cet appareil sous tension.

#### Use only with Siemens certified components.

**NOTE** - These instructions do not purport to cover all details or variations in equipment, or to provide for every possible contingency to be met in connection with installation, operation or maintenance. Should further information be desired or should particular problems arise, which are not covered sufficiently for the purchaser's purposes, the matter should be referred to the local Siemens sales office. The contents of this instruction manual shall not become part of or modify any prior or existing agreement, commitment or relationship. The sales contract contains the entire obligation of Siemens. The warranty contained in the contract between the parties is the sole warranty of Siemens. Any statements contained herein do not create new warranties or modify the existing warranty.

**TRADEMARKS** - Unless otherwise noted, all names identified by ® are registered trademarks of Siemens AG or Siemens Industry, Inc. The remaining trademarks in this publication may be trademarks whose use by third parties for their own purposes could violate the rights of the owner.

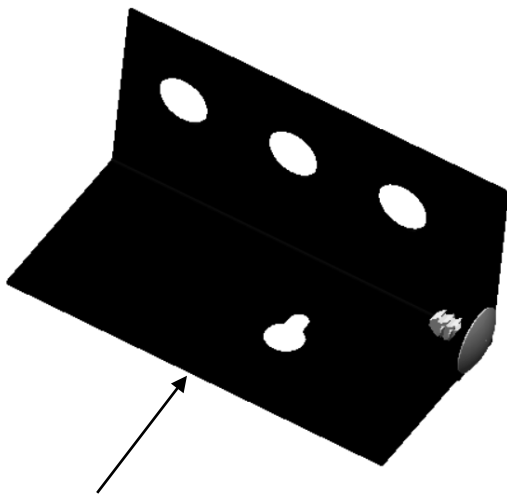
#### Recommended tools:



Screw driver

**NOTE:** Instructions show the HSK212BA installation.

HSK21BA and HSK22BA use a similar procedure



Touch-safe barrier along with Nylon Push Rivet (Qty. 1 no.) assembled



#6x1/2" L round head screw

	<p><b>⚠ Danger</b></p>	<p><b>⚠ Peligro</b></p>	<p><b>⚠ Danger</b></p>
	<p><b>Hazardous Voltage.</b>  <b>Will cause death or serious injury.</b>          Turn off and lock out all power supplying this equipment before working on this device.          Replace all covers before power supplying this device is turned on.</p>	<p><b>Tensión peligrosa.</b>  <b>Puede causar la muerte o lesiones graves.</b>          Desenergice totalmente el equipo antes de instalar o darle servicio. Reemplace todas las barreras y cubierta antes de energizar el interruptor.</p>	<p><b>Tension dangereuse.</b>  <b>Danger de mort ou risque de blessures graves.</b>          Mettre hors tension et cadenasser l'alimentation avant d'intervenir sur cet appareil.          Remettre tous les couvercles en place avant de remettre cet appareil sous tension.</p>

1. Prepare safety switch for Line Shield Replacement Kit installation.
  - Turn OFF and lock out all power supplying this equipment before working on the device.
  - Turn OFF the safety switch.
  - Verify that NO voltage is present at the wire grips.
2. Assemble the Touch-safe Barrier assembly, as shown in Fig. 1.

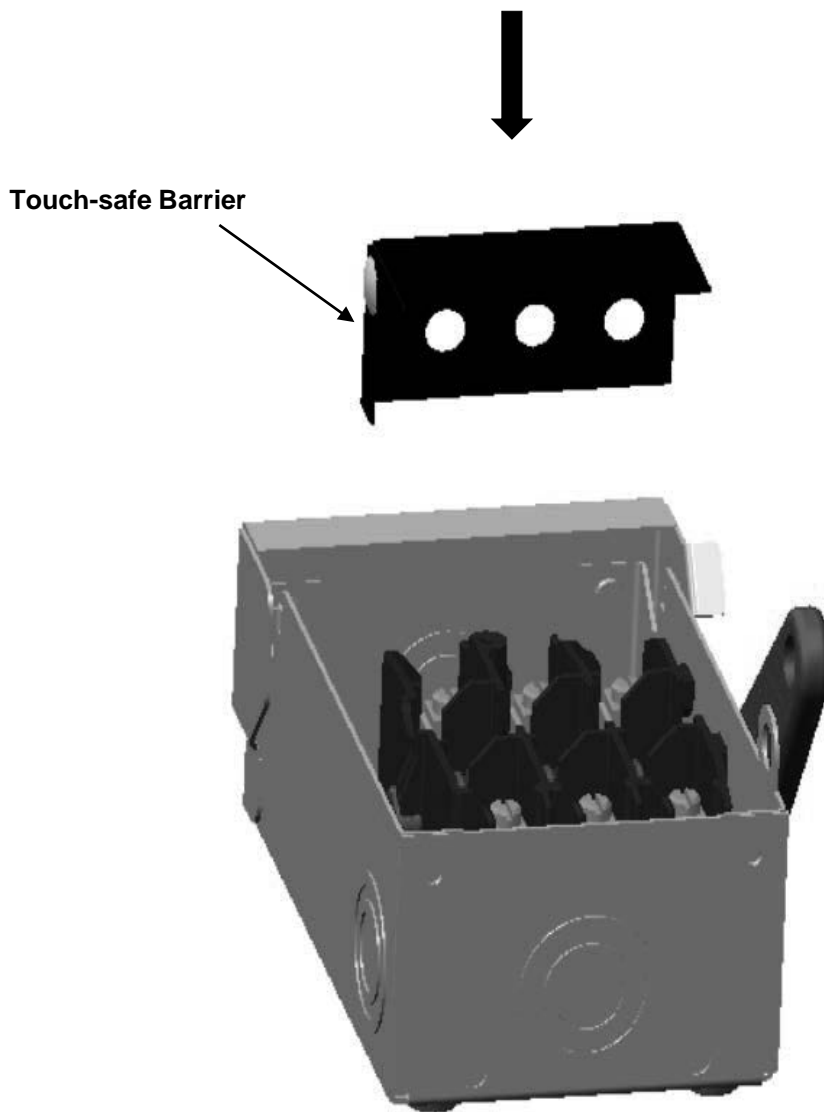


Fig. 1

	<p><b>⚠ Danger</b></p>	<p><b>⚠ Peligro</b></p>	<p><b>⚠ Danger</b></p>
	<p><b>Hazardous Voltage.</b>  <b>Will cause death or serious injury.</b>          Turn off and lock out all power supplying this equipment before working on this device.          Replace all covers before power supplying this device is turned on.</p>	<p><b>Tensión peligrosa.</b>  <b>Puede causar la muerte o lesiones graves.</b>          Desenergice totalmente el equipo antes de instalar o darle servicio. Reemplace todas las barreras y cubierta antes de energizar el interruptor.</p>	<p><b>Tension dangereuse.</b>  <b>Danger de mort ou risque de blessures graves.</b>          Mettre hors tension et cadenasser l'alimentation avant d'intervenir sur cet appareil.          Remettre tous les couvercles en place avant de remettre cet appareil sous tension.</p>

3. Assemble the round head screw, as shown in Fig. 2. Ensure the screw is fully inserted (check screw head is fully seated against the touch safe barrier).

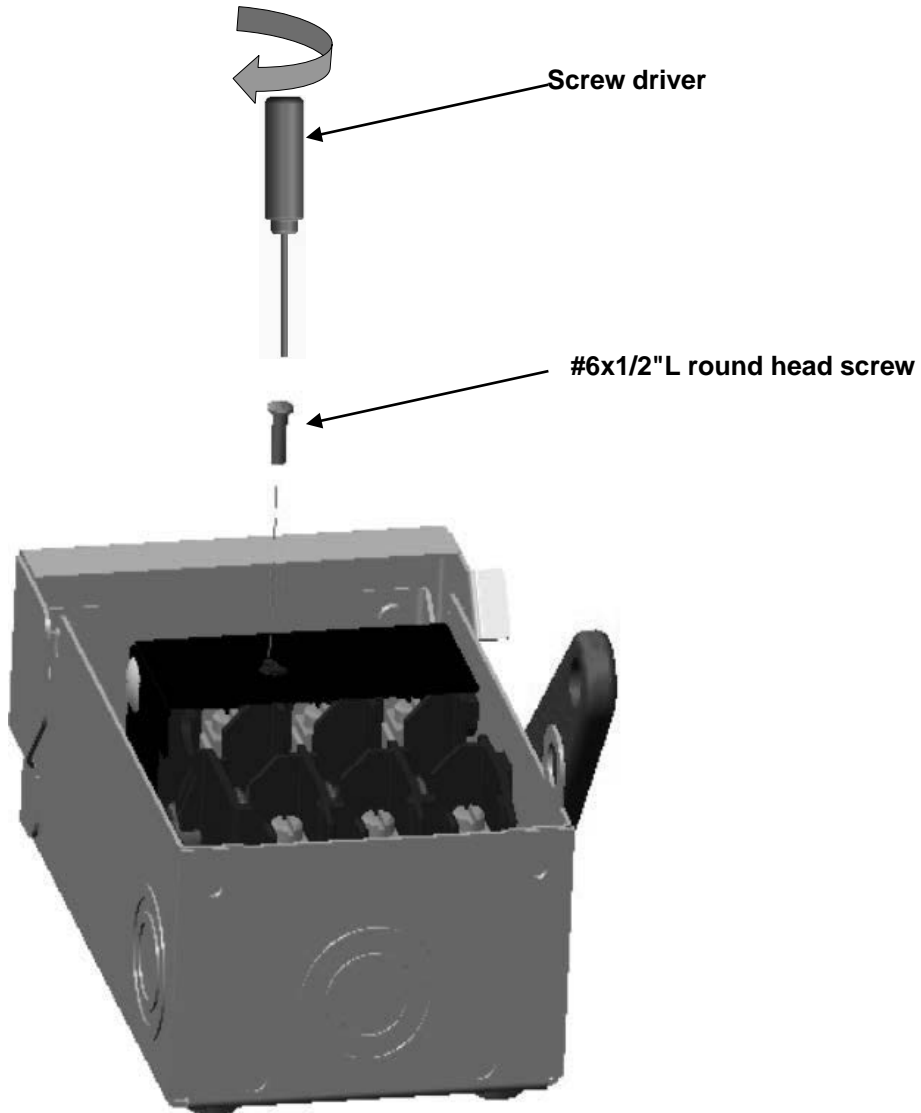


Fig. 2

	<p><b>⚠ Danger</b></p>	<p><b>⚠ Peligro</b></p>	<p><b>⚠ Danger</b></p>
	<p><b>Hazardous Voltage.</b>  <b>Will cause death or serious injury.</b>          Turn off and lock out all power supplying this equipment before working on this device. Replace all covers before power supplying this device is turned on.</p>	<p><b>Tensión peligrosa.</b>  <b>Puede causar la muerte o lesiones graves.</b>          Desenergice totalmente el equipo antes de instalar o darle servicio. Reemplace todas las barreras y cubierta antes de energizar el interruptor.</p>	<p><b>Tension dangereuse.</b>  <b>Danger de mort ou risque de blessures graves.</b>          Mettre hors tension et cadenasser l'alimentation avant d'intervenir sur cet appareil. Remettez tous les couvercles en place avant de remettre cet appareil sous tension.</p>

4. To ensure the barrier blocks inadvertent access to the line terminal, ensure the barrier is snapped down and the wires exit through the holes in the barrier. See Fig. 3

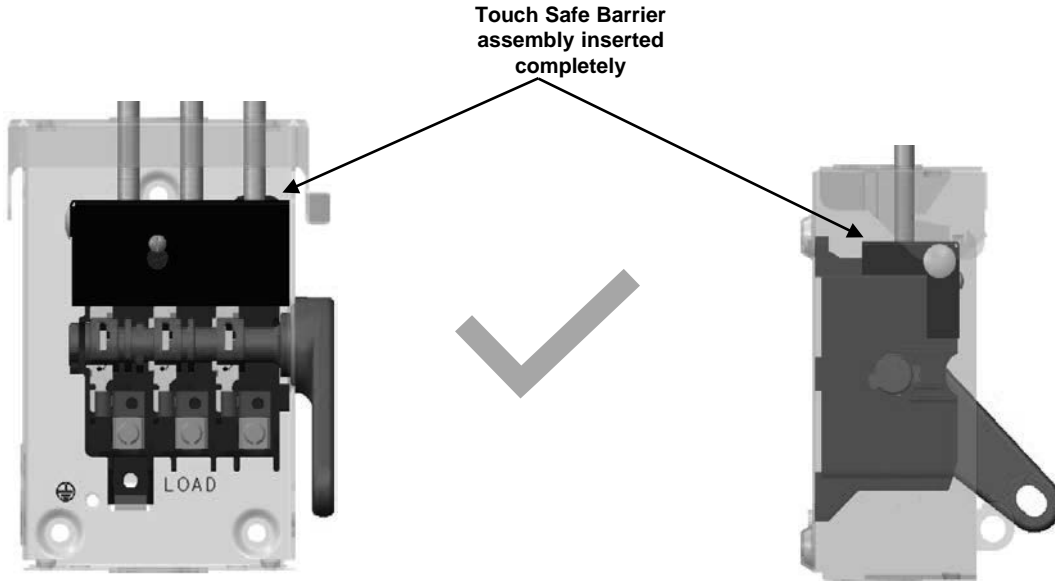


Fig. 3

5. The incorrect orientation of the closed barrier assembly. Fig. 4

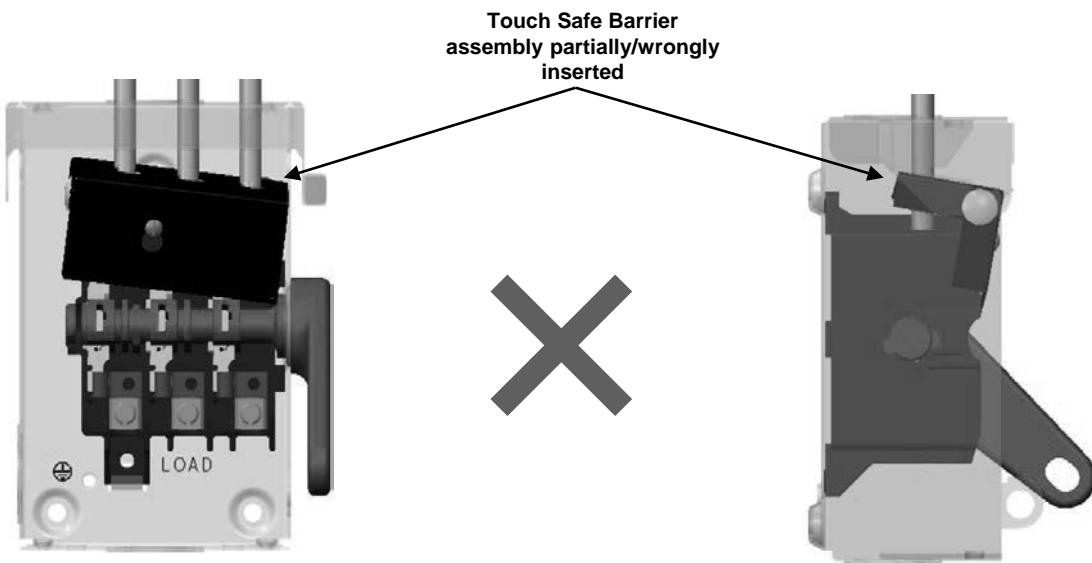


Fig. 4

	<p><b>⚠ Danger</b></p>	<p><b>⚠ Peligro</b></p>	<p><b>⚠ Danger</b></p>
	<p><b>Hazardous Voltage.</b>  <b>Will cause death or serious injury.</b>          Turn off and lock out all power supplying this equipment before working on this device.          Replace all covers before power supplying this device is turned on.</p>	<p><b>Tensión peligrosa.</b>  <b>Puede causar la muerte o lesiones graves.</b>          Desenergice totalmente el equipo antes de instalar o darle servicio. Reemplace todas las barreras y cubierta antes de energizar el interruptor.</p>	<p><b>Tension dangereuse.</b>  <b>Danger de mort ou risque de blessures graves.</b>          Mettre hors tension et cadenasser l'alimentation avant d'intervenir sur cet appareil.          Remettre tous les couvercles en place avant de remettre cet appareil sous tension.</p>

6. Close cover before restoring power to the safety switch. See Fig. 5a & 5b

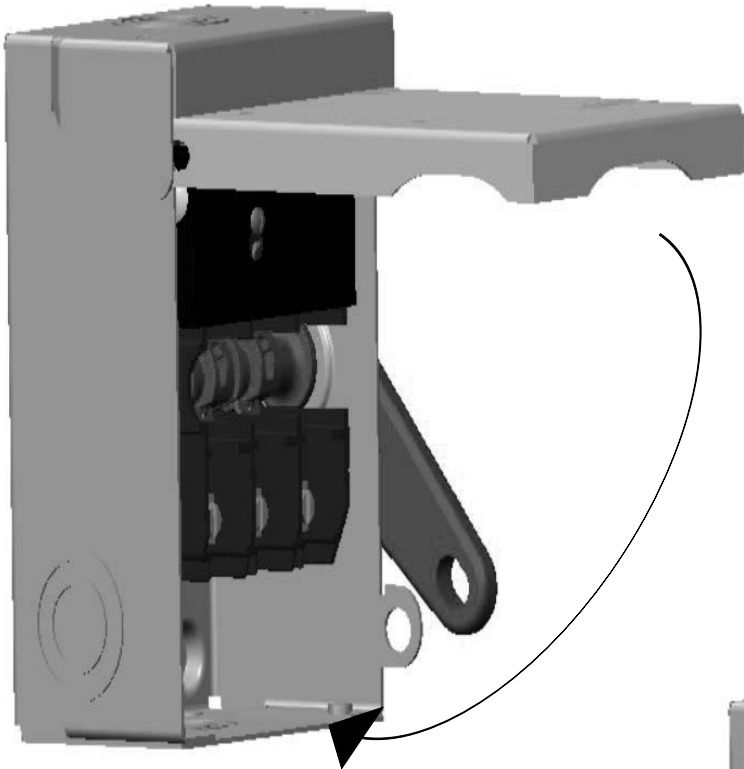


Fig. 5a

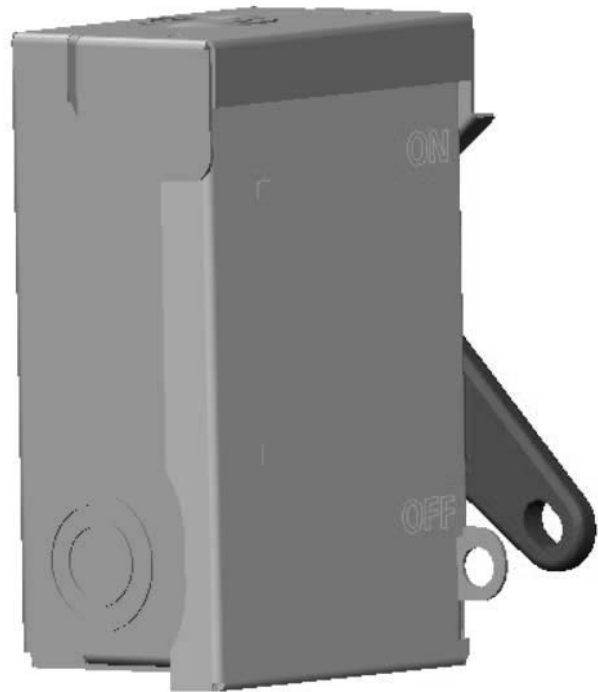


Fig. 5b

**Technical Support:**

Toll Free: 1-800-241-4453

Internet: [www.usa.siemens.com/powerdistribution](http://www.usa.siemens.com/powerdistribution)

Subject to change without prior notice  
 Siemens Industry Inc., Norcross, GA 30092