

Catalog Numbers

Catalog No.	Amperage Rating Max	Max Interrupting Rating	Catalog No.	Amperage Rating Max	Max Interrupting Rating
1 PHASE, 3 WIRE, 120/240V AC MAX			3 PHASE, 4 WIRE, 240V AC MAX		
WEB1400B	400	65,000	WEB3400B	400	65,000
WEB1400BU	400	100,000	WEB3400BU	400	100,000

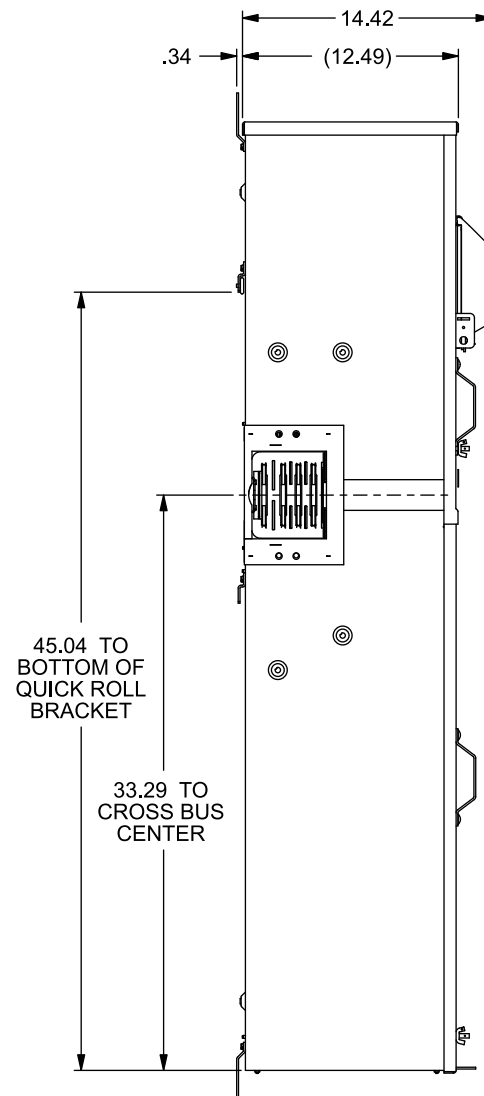
- TYPE 3R OUTDOOR ENCLOSURE
- MAIN BUS RATING: 1200A MAX.
- FOR UNDERGROUND SERVICE ONLY
- COMPLIES WITH EUSERC DWG. NOS. 315, 343, and 347



Order Catalog Numbers below for units with Lug Kits factory installed.

CATALOG Number	BASE Number	with Lug Kit Factory Installed
WEB1400BA3	WEB1400B	LK12500N2
WEB1400BUA3	WEB1400BU	LK12500N2
WEB1400BA14	WEB1400B	LK11750N2
WEB1400BUA14	WEB1400BU	LK11750N2
WEB3400BB3	WEB3400B	LK32500N2
WEB3400BUB3	WEB3400BU	LK32500N2
WEB3400BB14	WEB3400B	LK31750N2
WEB3400BUB14	WEB3400BU	LK31750N2

WEB3400B (3 Phase) SHOWN



Additional Modules, Accessories, and Lug Kits

FOR USE WITH:	Module Description	Siemens Series#
Main Breakers	WB(M), WEB(M), WXB(M), BFT(M)	
Switches	WMP, WS, WES, WXS	
Tap/Terminal Boxes	WTB, WET, WT_PU, WTBN, WBT(M)	
Pull Boxes	WMMB	
Meter Module	(W)MM, (W)MT, (W)ML, (W)MK, (W)MLZ(F), (W)MN	
Meter Combinations	WC, WCL, WCT,	
Extension Box	WSP, WSPD	
Bussed Elbow	BE, WELB	

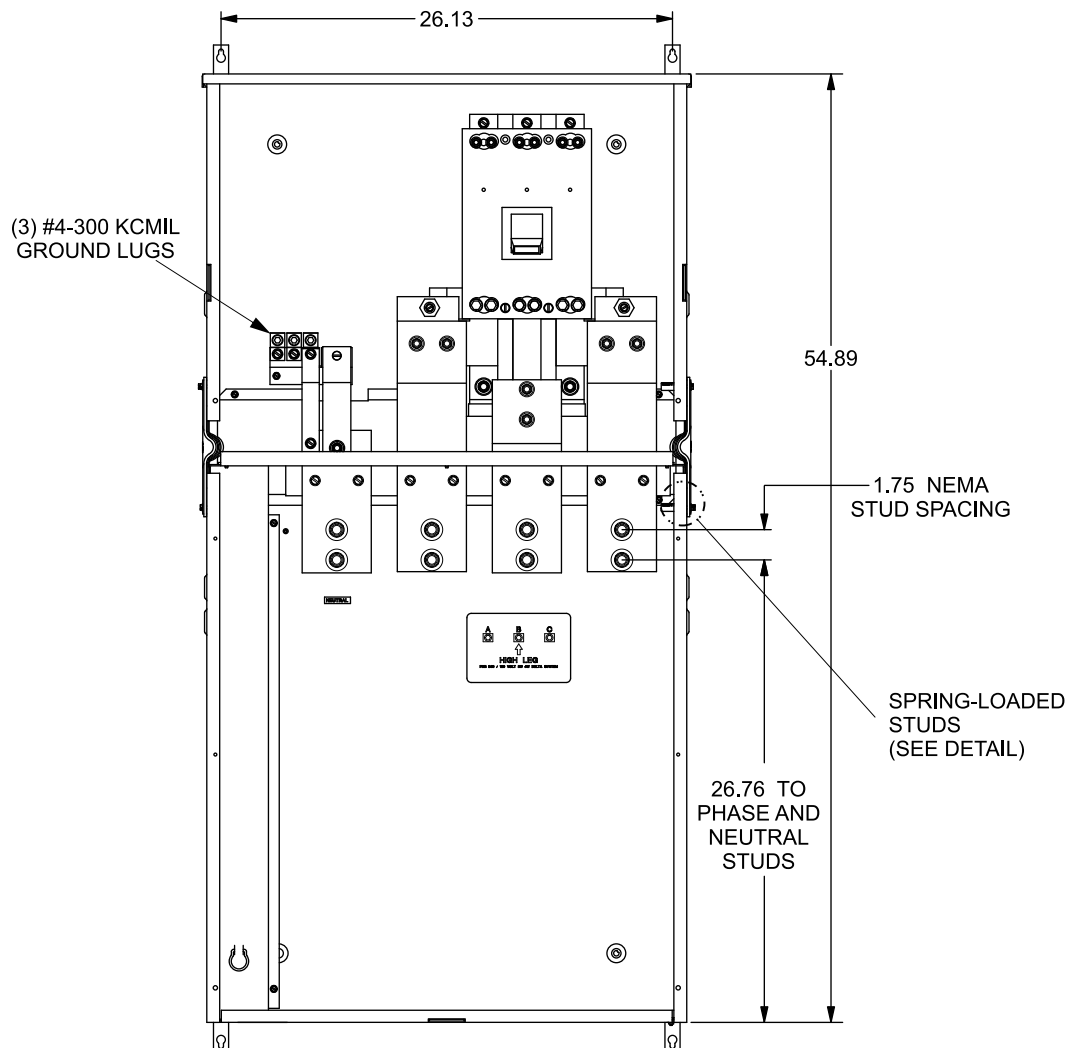
Connect Modules Using	Catalog Number / Torque
QuickConnect	QC1 (1ph) or QC4 (3ph) 400-440 lb-in (35-36 ft.-lb.) Torque

1 Phase: Lugs for Phase and Neutral Connections (not supplied)						
NEMA Lug	MFG	Wire Range	Type	No. Wires per phase	Torque (lb.-in.)	
LK11750N2	Siemens	300-750 kcmil	Mechanical	1	500	
LK12500N2	Siemens	1/0-500 kcmil	Mechanical	2	500	
2ACL-500	ILSCO	500 kcmil	Compression	2	NA ②	
2ACL-750	ILSCO	750 kcmil	Compression	1	NA ②	

3 Phase: Lugs for Phase and Neutral Connections (not supplied)						
NEMA Lug	MFG	Wire Range	Type	No. Wires per phase	Torque (lb.-in.)	
LK31750N2	Siemens	300-750 kcmil	Mechanical	1	500	
LK32500N2	Siemens	1/0-500 kcmil	Mechanical	2	500	
2ACL-500	ILSCO	500 kcmil	Compression	2	NA ②	
2ACL-750	ILSCO	750 kcmil	Compression	1	NA ②	

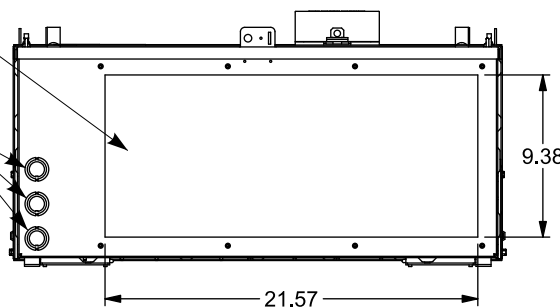
- ① Order one mechanical lug kit for main breaker and neutral conversions. Contact lug manufacturer for compression lug quantities supplied for each kit.
② See lug manufacturer's instruction sheet supplied with the connector for tool, die, and number of crimps.

THIS VIEW SHOWN WITH COVERS REMOVED

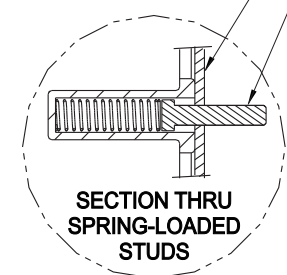


REMOVABLE BOTTOM ENDWALL OPENING

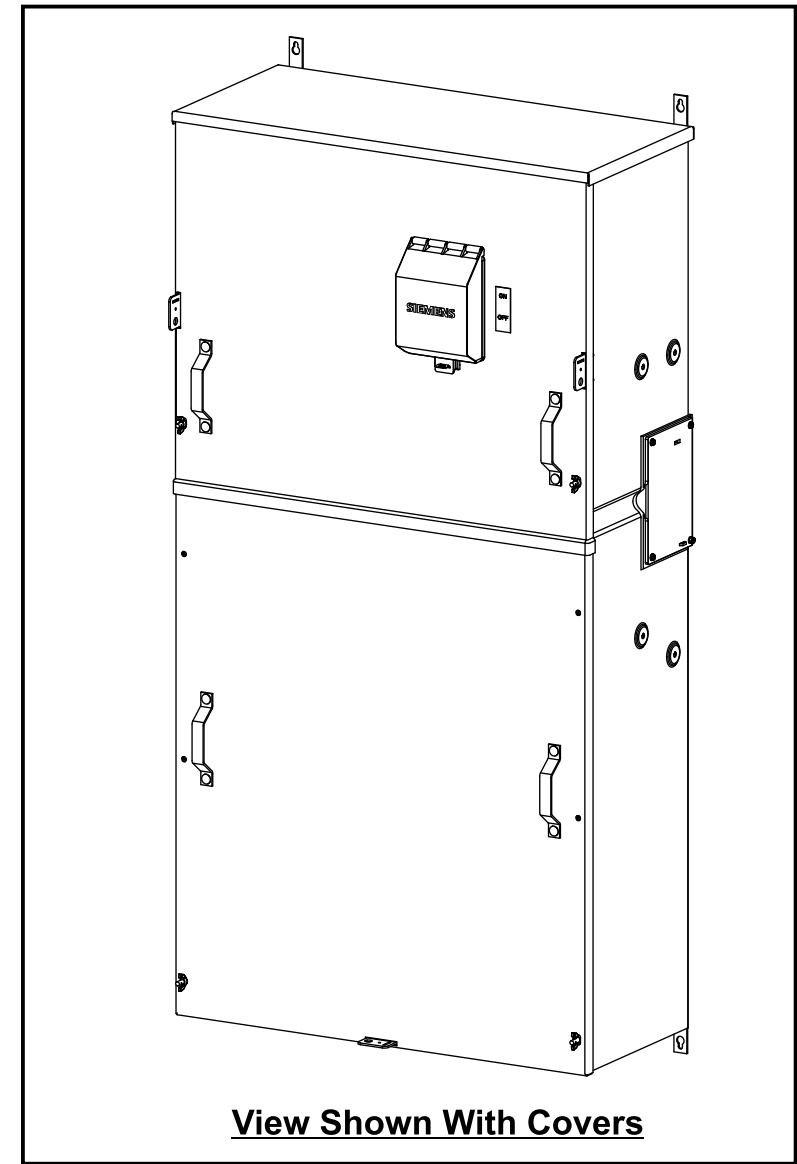
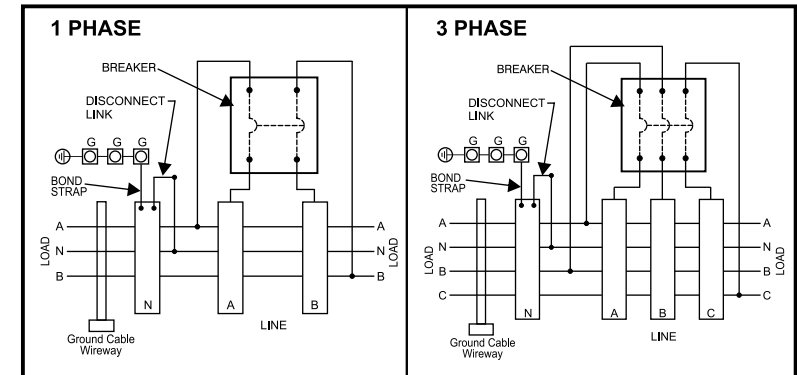
(3) 3/4 KOs



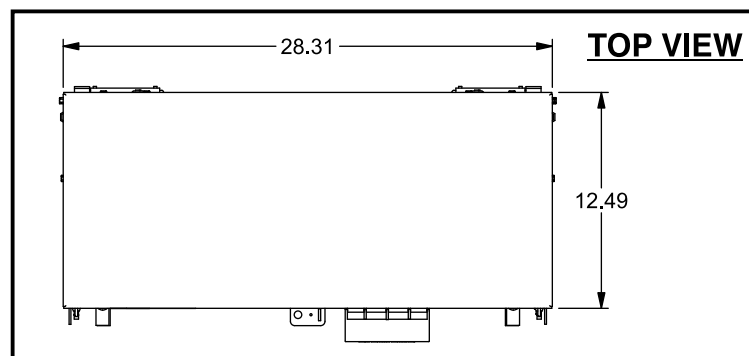
#10-32 x 7/8 SCREWS ENCLOSURE WALL



Schematics



View Shown With Covers



© 2019 Copyright Siemens Industry, Inc.

SIEMENS
Siemens Industry, Inc.

PowerMod™ Breaker Mains

Description: **WEB1400B thru WEB3400BU (EUSERC) Service Entrance Breaker Mains**

KAM 3/6/19 Fam . DO NOT SCALE DRAWING Dwg. No. **400A_E_SE_Brkr_Mains**