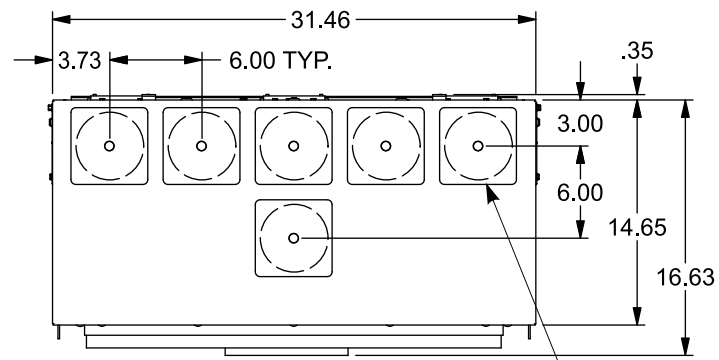


Catalog Numbers

Catalog No.	Amperage Rating Max	Max Interrupting Rating
1 PHASE, 3 WIRE, 120/240V AC MAX		
WB11400T	1400	65,000
WB11400TU	1400	100,000
WB11600T	1600	65,000
WB11600TU	1600	100,000
3 PHASE, 4 WIRE, 240V AC MAX		
WB31400T	1400	65,000
WB31400TU	1400	100,000
WB31600T	1600	65,000
WB31600TU	1600	100,000

- FOR OVERHEAD SERVICE ONLY
- TYPE 3R OUTDOOR ENCLOSURE
- MAIN BUS RATING: 1200A MAX. (1200A MAX FEED PER SIDE)



FRONT VIEW SHOWN WITH COVERS AND SHIELDS REMOVED

(6) TYPE HD HUB OPENINGS (4" MAX), FACTORY INSTALLED COVER PLATES

Hubs

HD Type Hubs	Catalog No.
Hub Cover Plate	EC56933S
Type HD Hub 2"	EC56854
Type HD Hub 2-1/2"	EC56855
Type HD Hub 3"	EC56856
Type HD Hub 3-1/2"	EC56857
Type HD Hub 4"	EC56858

Lug Kits

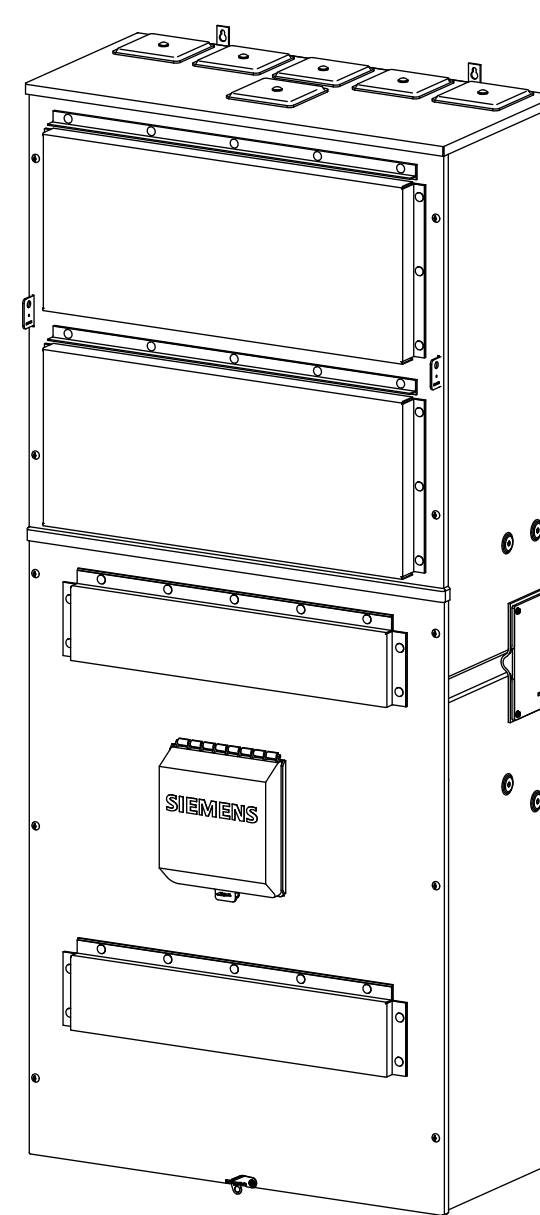
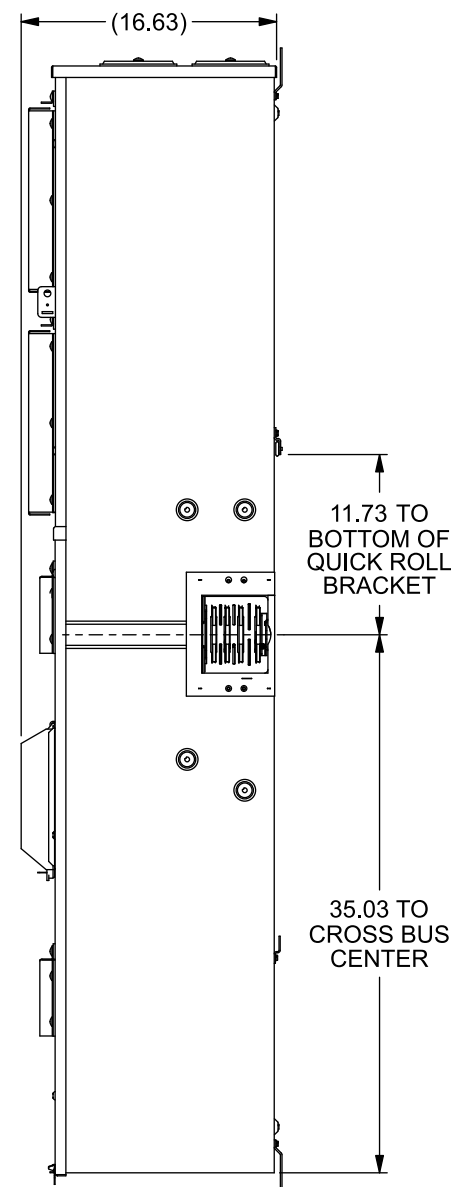
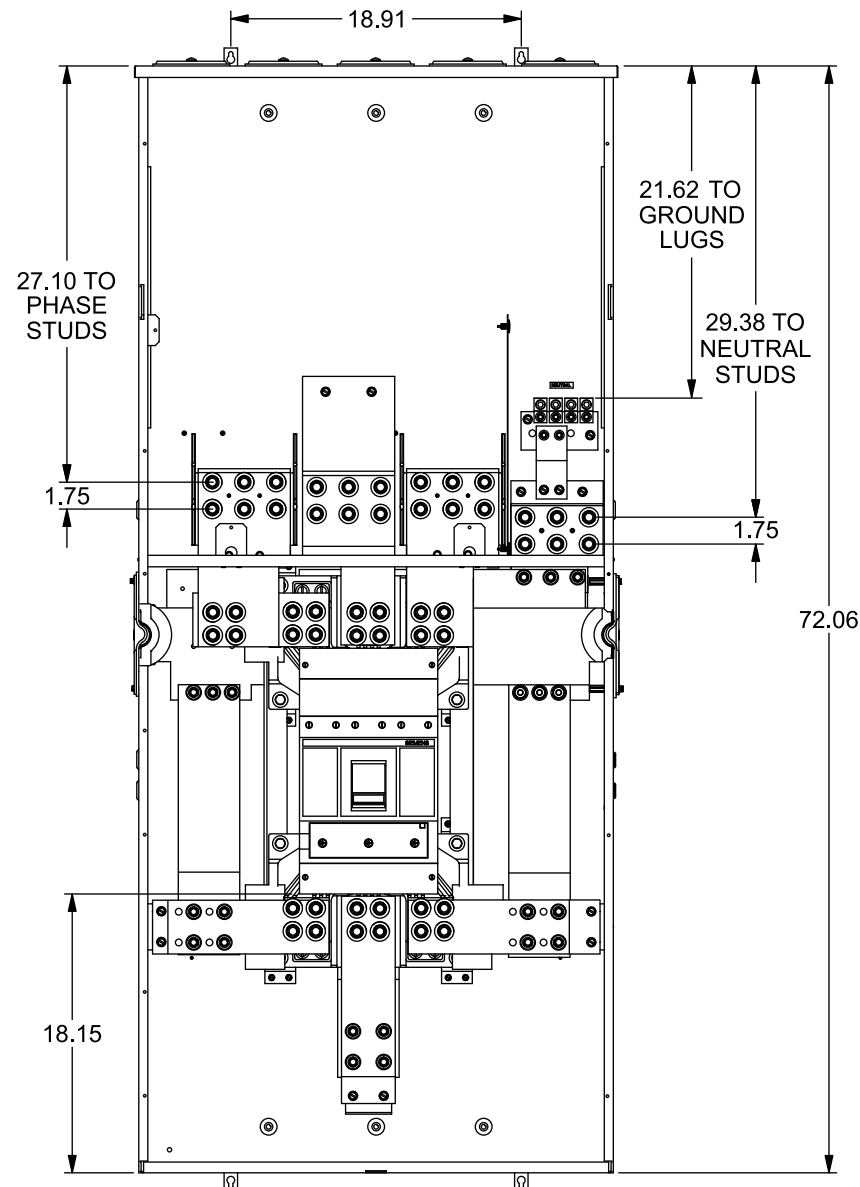
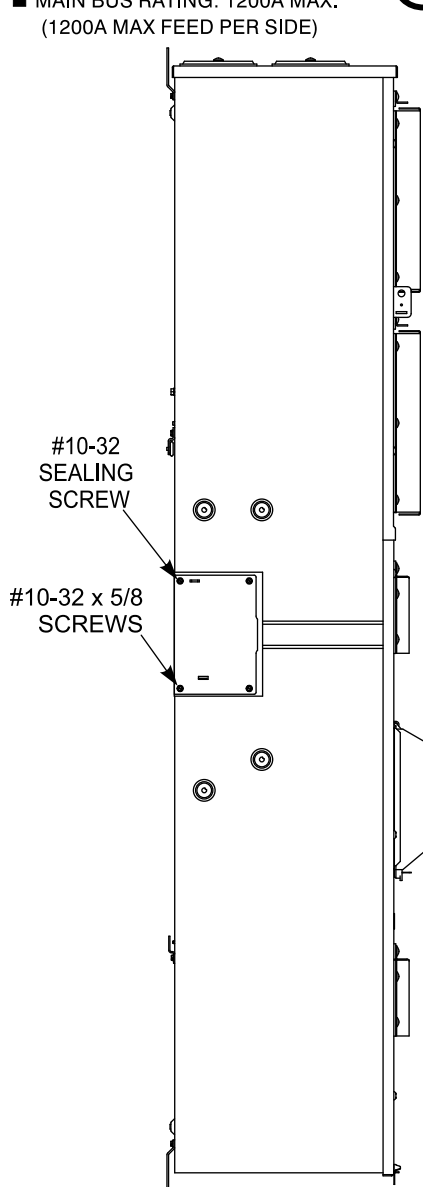
Lugs for Phase and Neutral Connections (not supplied)						
1 Phase Lug No. ①	3 Phase Lug No. ①	MFG	Wire Range	Type	No. Wires per phase	Torque (lb.-in.)
LK15600N2	LK35600N2	Siemens	1/0-600 kcmil	Mechanical	5	500 ②
LK15750N2	LK35750N2	Siemens	300-750 kcmil	Mechanical	5	500 ②
LK16750N2	LK36750N2	Siemens	1/0-750 kcmil	Mechanical	6	500
2ACL-600	2ACL-600	ILSCO	500 kcmil	Compression	5	NA ③
2ACL-750	2ACL-750	ILSCO	750 kcmil	Compression	5	NA ③

- ① Order one mechanical lug kit for main breaker and neutral conversions. Contact lug manufacturer for compression lug quantities supplied for each kit.
- ② Kit contains more than one lug type.
- ③ See lug manufacturer's instruction sheet supplied with the connector for tool, die, and number of crimps.

Additional Modules

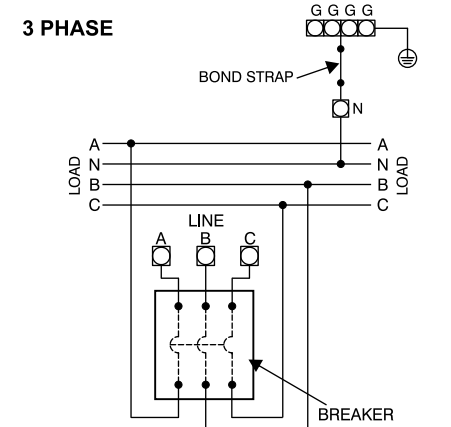
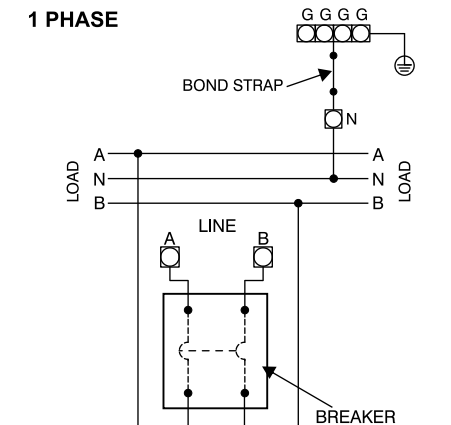
FOR USE WITH:	
Module Description	Siemens Series#
Main Breakers	WB(M), WEB(M), WXB(M), BFT(M)
Switches	WMP, WS, WES, WXS
Tap/Terminal Boxes	WTB, WET, WT_PU, WTBN, WBT(M)
Pull Boxes	WMMB
Meter Module	(W)MM, (W)MT, (W)ML, (W)MK, (W)MLZ(F), (W)MN
Meter Combinations	WC, WCL, WCT
Extension Box	WSP, WSPD, SPT
Bussed Elbow	BE, (W)ELB, ELBT

Connect Modules Using	Catalog Number / Torque
QuickConnect	QC1 (1ph) or QC4 (3ph) 400-440 lb-in (35-36 ft.-lb.) Torque



WB31600T (3 Phase) SHOWN

Schematic



Terminals A, B, C and N: See Lug Chart for applicable lug kits, wire size, and torque information.
Ground terminal G: Wire size #4-300 kcmil. Torque terminal to 250 lb.-in.

© 2020 Copyright Siemens Industry, Inc.

SIEMENS
Siemens Industry, Inc.

PowerMod™ Breaker Mains

Description: **WB11400T thru WB31600TU**
Top Feed Service Entrance Breaker Mains

KAM 7/22/20 DO NOT SCALE DRAWING Dwg No: **1400-1600A_T_SE Brkr Mains**