

Catalog Numbers

| Catalog No. | Amperage Rating | Max. Interrupting Rating |
|-------------------------------------|-----------------|--------------------------|
| 3 PHASE, 4 WIRE, 240V AC MAX | | |
| WS31200BU | 1200 | 100,000 |

- FOR UNDERGROUND SERVICE ONLY
- TYPE 3R OUTDOOR ENCLOSURE
- USE CLASS T (300V) FUSES ONLY



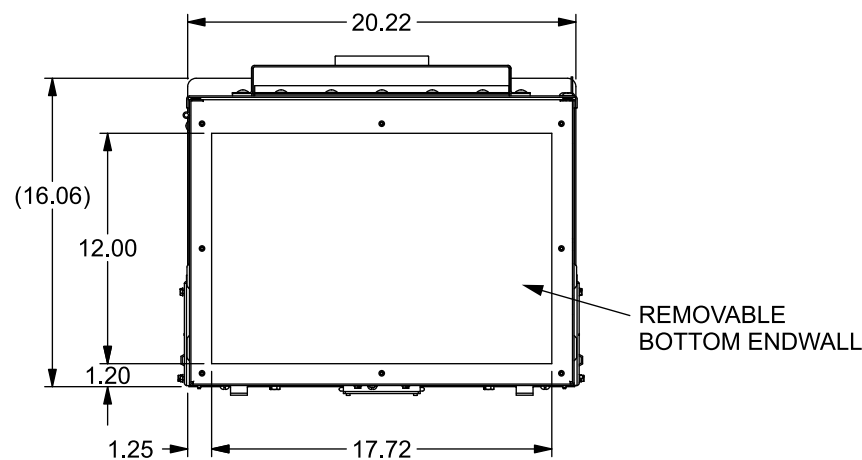
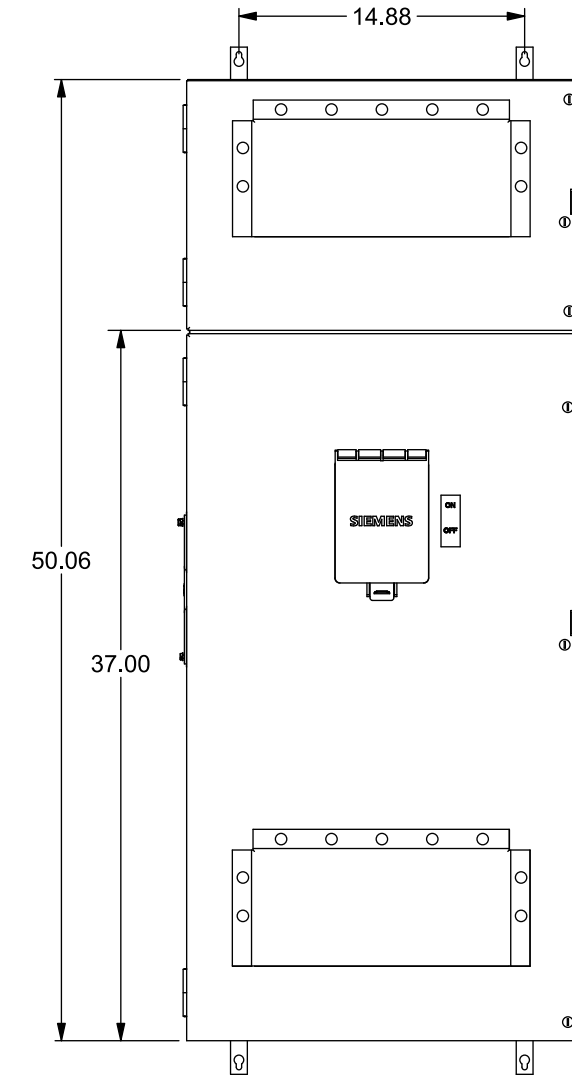
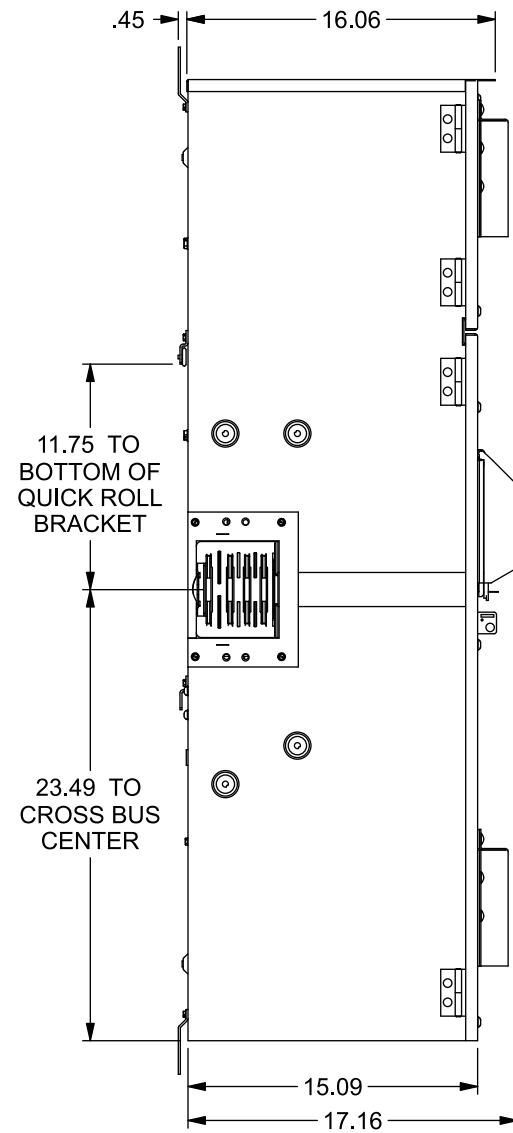
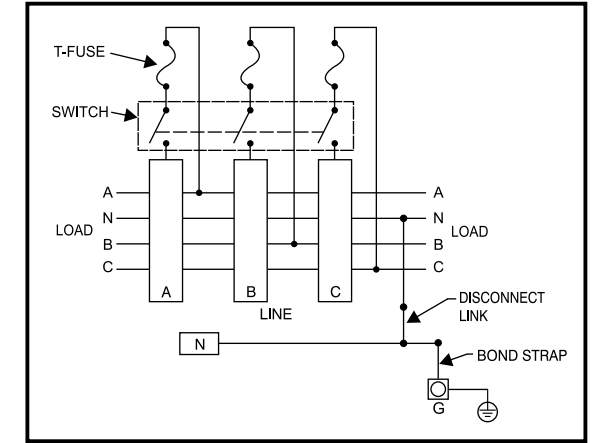
Additional Modules, Accessories and Lug Kits

| FOR USE WITH: | |
|--------------------|--|
| Module Description | Siemens Series# |
| Main Breakers | WB(M), WEB(M), WXB(M), BFT(M) |
| Switches | WMP, WS, WES, WXS |
| Tap/Terminal Boxes | WTB, WET, WT_PU, WTBN, WBT(M) |
| Pull Boxes | WMMB |
| Meter Module | (W)MM, (W)MT, (W)ML, (W)MK, (W)MLZ(F), (W)MN |
| Meter Combinations | WC, WCL, WCT, |
| Extension Box | WSP, WSPD |
| Bussed Elbow | BE, WELB |

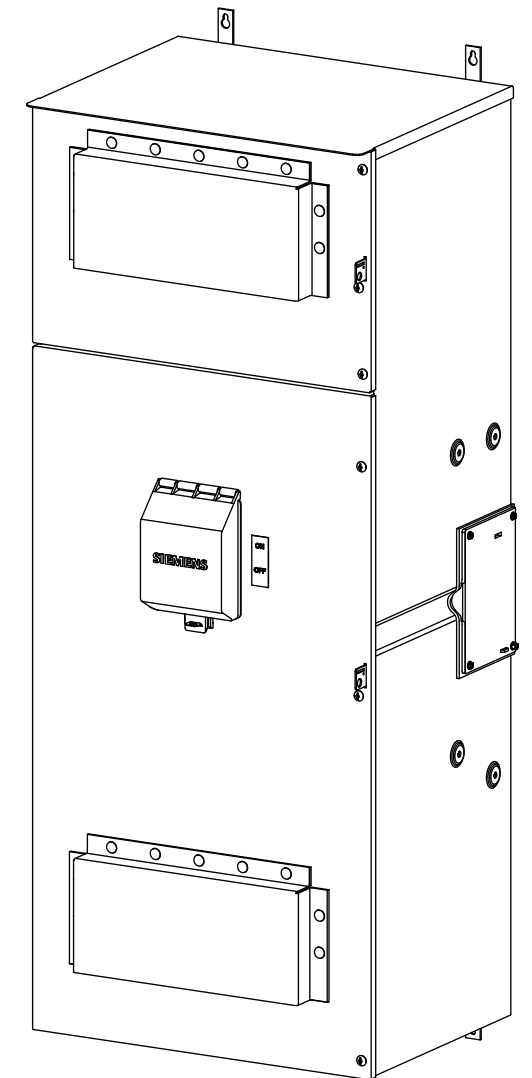
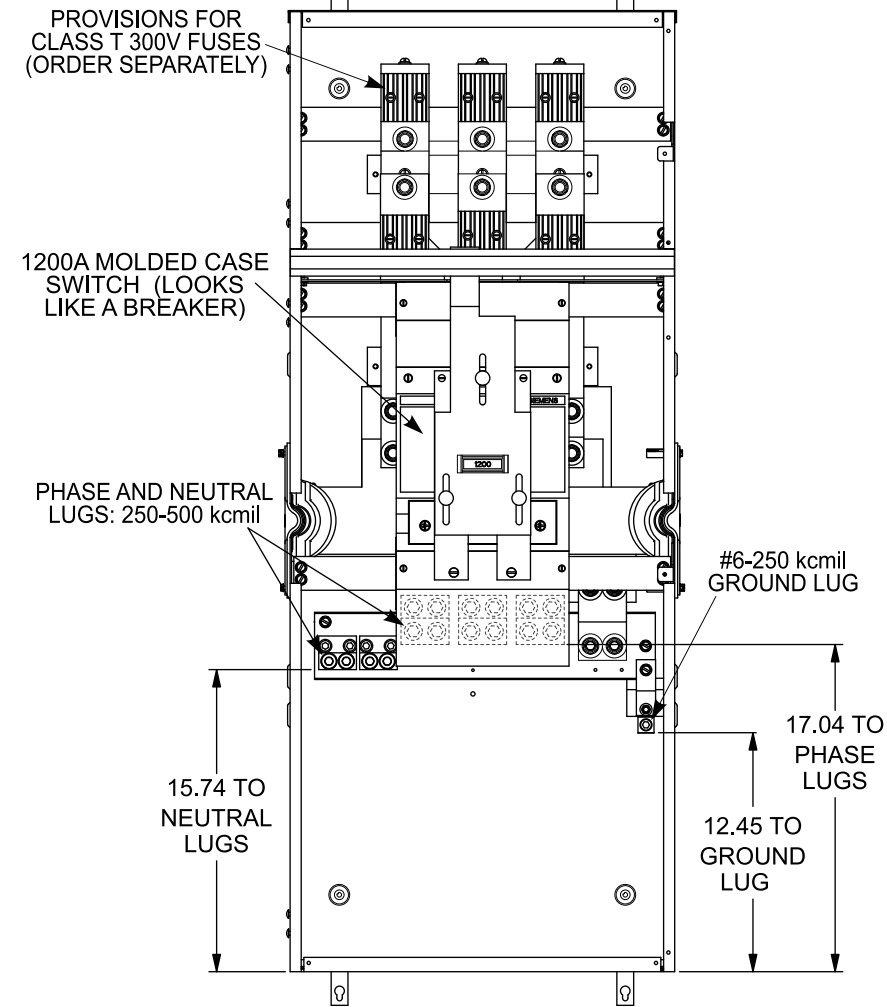
| Connect Modules Using: | |
|------------------------|---|
| Using: | Catalog Number / Torque |
| QuickConnect | QC4 (3ph) 400-440 lb-in (35-36 ft.-lb.) Torque |

| Siemens Accessories | |
|---------------------------|----------------------------------|
| Replacement Switch | Catalog Number |
| Phase and Neutral Lug Kit | LK34500 (kit contains 4 lugs) |

Schematic



VIEW SHOWN WITH DOORS REMOVED



© 2019 Copyright Siemens Industry, Inc.

SIEMENS
Siemens Industry, Inc.

PowerMod™ Switch Mains

Description: **3 Phase, 1200A, UG Service Only, Service Entrance Switch Main**

KAM 1/29/19

DO NOT SCALE DRAWING

Dwg. No.

WS31200BU