

SIEMENS

Indoor Meter Module

Catalog Number

MM52225J, MM52225RJ, MM52225RJB

Enclosure

Type 1

Ratings: Main Bus Rating: 1200 Amps.
208Y/120 Volts AC, 3 Phase, 4 Wire
See adjacent label for Short Circuit Current Rating.
Meter Socket Rating: 200 Amps. Continuous
Branch Rating: Top 2 branches 200 Amps Max.
Bottom 3 branches 225 Amps Max. See Breaker Ratings.

WARNING: This meter module may be used on a 240/120 Volts AC, 3 Phase, 4 Wire Delta system when none of the meter sockets in this module are connected to B Phase. B Phase will be high leg on 3 Phase 4 Wire Delta systems.

Suitable For Use As Service Equipment when used in combination with Siemens Modular Terminal Box Series WMTB, WTB, WET, or Murray Tap Box Series DTB_W and no more than six main disconnecting means are provided.

For installation by a qualified person, in accordance with all electrical codes and/or the National Electrical Code®.

Terminals:

Use Copper or Aluminum Wire at all panel terminals. Suitable for 60°/75°C Conductors. See breaker markings for wire size and torque requirements.

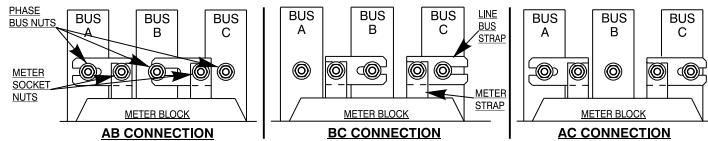
Neutral Terminal: Wire Size #4-300 kcmil, Torque to 250 lb.-ins.
Ground Terminal: Wire Size #4-2/0 AWG, Torque to 50 lb.-ins.

General Information: See enclosed instruction sheet for information on mounting units. Circuit breaker overload trip position is indicated by handle position midway between ON and OFF. To reset, move handle to OFF position then turn ON.

Rephasing Instructions Instrucciones para reajuste de fase

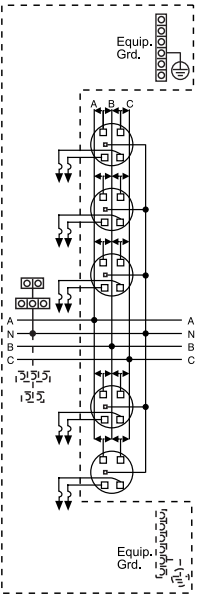
Factory installed phasing is AB, BC, AC, AB and BC top to bottom. Each meter socket can be rephased AB, BC, or AC by repositioning line bus straps. If a different phase arrangement is needed, loosen hex nuts and reconnect one or both line bus straps, then retighten the hex nuts to 60-65 lb.-in. Tighten hex nut at meter socket first, then tighten hex nut on vertical phase bus.

Las fases AB, BC, AC, AB y BC instaladas en fábrica de arriba hacia abajo. Cada receptáculo del medidor puede colocarse en fase AB, BC o AC repositionando las correas del bus de la línea. Si se necesita una disposición de fase distinta, afloje las tuercas hexagonales y reconecte una o ambas correas del bus de la línea, luego vuelva a apretar las tuercas hexagonales a 60-65 libras-pulgada. Apriete primero la tuerca hexagonal en el receptáculo del medidor, luego apriete la tuerca hexagonal en el bus de fase vertical.



Siemens Industry, Inc. Norcross, Georgia U.S.A. **DH1** 40900568 0101 Rev.A

© The National Electrical Code is a registered trademark of the National Fire Protection Association.
© 2012 Copyright Siemens Industry, Inc.



SIEMENS

Short Circuit Current Rating: (Wattour meter not included in short circuit current rating). This panelboard has a maximum short circuit current rating of 100,000 Amps RMS symmetrical, 120/240 V~ maximum. The actual rating is dependent on the branch breakers installed in this panelboard and the main disconnect, if any, installed ahead of this panelboard. The correct branch breakers and main/branch breaker series combinations to be used for various short circuit current levels are listed in the tabulation below. Any circuit breaker installed, replaced, or added in this panelboard must be manufactured by Siemens and must be of the correct Type as indicated in the tabulation below.

MAIN DISCONNECT	BRANCH BREAKER*	Then the maximum short circuit current rating in RMS symmetrical Amperes, 120/240 V~ maximum is
When the main protecting the system is a (Siemens Breaker Type)	And the branch breakers installed are Siemens type	
NONE USED or JXD2(-A), JD6(-A), JXD6(-A), HJD6(-A), HJXD6(-A), LD6(-A), LXDX6(-A), HLD6(-A), HLXDX6(-A), MD6, MXD6, HMD6, HMXD6, ND6, NXD6, SND6-B, HND6, HNXD6, SHND6-B, NJJA, NJGA, HJGA, NLGA, HLGA, NLGB, HNLGB, NMG, HMG, NNG, HNG, NPG, HPG, PD6, PDX6, SPD6-B, HPD6, HPXD6, SHPD6-B, RD6, RXD6, HRD6, HRXD6, or Class J, T, R, or L Fuses	QS, QP, MP-T	10,000
NONE USED	QSH, QPH, MP-HT	
MD6, MXD6, HMD6, HMXD6, ND6, NXD6, SND6-B, HND6, HNXD6, SHND6-B, NJJA, NJGA, HJGA, NLGA, HLGA, NLGB, HNLGB, NMG, HMG, NNG, HNG, NPG, HPG, PD6, PDX6, SPD6-B, HPD6, HPXD6, SHPD6-B, RD6, RXD6, HRD6, HRXD6, or Class J, T, R, or L Fuses	MP-HT	22,000
NONE USED	QSHH	42,000
NONE USED	HQS, HQP, MP-MT	
JXD2(-A), JD6(-A), JXD6(-A), HJD6(-A), HJXD6(-A), LD6(-A), LXDX6(-A), HLD6(-A), HLXDX6(-A)	MP-HT	
JXD2(-A), JD6(-A), JXD6(-A), LD6(-A), LXDX6(-A), MD6, MXD6, ND6, NXD6, SND6-B, NJJA, NJGA, NLGA, NLGB, NMG, NNG, NPG, PD6, PDX6, SPD6-B, RD6, RXD6, HPD6, HPXD6, SHPD6-B, HRD6, HRXD6, or Class J, T, R, or L Fuses	QS, QSH, QSHH, HQS, QPH, HQP, MP-MT	65,000
HJD6(-A), HJXD6(-A), HLD6(-A), HLXDX6(-A), HMD6, HMXD6, HND6, HNXD6, SHND6-B, HJGA, HLGA, HNLGB, HMG, HNG, HPG, HPD6, HPXD6, SHPD6-B, HRD6, HRXD6, or Class J, T, R, or L Fuses	QPH, HQP, MP-MT	
NONE USED	HQSH, HQPH	
HJD6(-A), HJXD6(-A), HLD6(-A), HLXDX6(-A), HMD6, HMXD6, HND6, HNXD6, SHND6-B, HJGA, HLGA, HNLGB, HMG, HNG, HPG, HPD6, HPXD6, SHPD6-B, HRD6, HRXD6, or Class J, T, R, or L Fuses	QS, QSH, QSHH, HQS, HQSH, HQPH	100,000

* Note: A Type QP, QPH, HQP, HQPH, MP-T, MP-HT or MP-MT breaker installed directly above a Type QS, QSH, QSHH, HQS or HQSH breaker will be limited to a maximum wire size of 1 AWG CU/AL.

Warning: This equipment has been designed for use only with circuit breakers listed above. Use of other circuit breakers in this equipment could result in personal injury or property damage and may void the warranty.

Module Description	Siemens Series#
Main Breakers	WB(M), WEB(M), WXB(M), BFT(M)
Switches	WMP, WS, WES, WXS
Tap/Terminal Boxes	WTB, WET, WT, PU, WTBN, WBT(M)
Pull Boxes	WMMB
Meter Module	(W)MM, (W)MT, (W)ML, (W)MK, (W)MLZ(F), (W)MN
Meter Combinations	WC, WCL, WCT,
Extension Box	WSP, WSPD
Bussed Elbow	BE, WELB

Important: Do not allow petroleum based (hydrocarbon) sprays, chemicals, solvents or any paint to contact interior components. Petroleum based chemicals can cause degradation of electrical insulating materials.

Siemens Industry, Inc. Norcross, Georgia U.S.A. **DH1** 4749930 Rev.02

© 2019 Copyright Siemens Industry, Inc.

Connect Modules	
Using:	Catalog Number / Torque
QuickConnect	QC1 (1ph) or QC4 (3ph) 400-440 lb-in (35-36 ft.-lb.) Torque
Single Bolt Joint	SBJ1 (1ph) or SBJ4 (3ph) 400-480 lb-in (35-40 ft.-lb.) Torque

Accessories:

Description	Catalog No.
Horn By-Pass Mod	ECMFH
5th Jaw Mod	ECMF5
Insulated 5th Jaw	ECMF5i
Meter Cover Plate	ECCP3
End Closure Plate	WMPE
Meter Socket	ECMFS
Quick Phase Strap	ECMFPS
125A Breaker Mounting	ECMFBM1
225A Breaker Mounting	ECMFBM2
Breaker Cover Repl	ECBC
Breaker HoldDown	ECMBR2
Ringless Conversion Kit	ECMRLCK
Meter Cover, Ring Type	ECMFMCR
Meter Cover, Ringless	ECMFMCR
Bottom Pull Cover	ECMFC
Load Cover Screws	ECMFCFS
Parts Kit	ECMFPK
Ground/Nil Bar Kit	ECMFGN125
Neutral Bar Kit 225A	ECMFBN225
KO Plate with Knockouts	ECMMKOP
KO Plate w/o Knockouts	ECMMNKOP
Mounting Tabs (2)	ECMFTAB
QuickRoll Wheel Clip	ECMFWLCLIP
Mounting Clip	MMCLIP
Wall Mounting Rail (60°)	MMZR60
Mounting Rail	MMRRAIL

4740083 Rev.C