

CATALOG NO. MM0202L1100EY

TYPE 3R ENCLOSURE (RAINPROOF) TOP FEED ONLY.

SUITABLE FOR USE AS SERVICE EQUIPMENT WHEN NOT MORE THAN SIX MAIN DISCONNECTING MEANS ARE PROVIDED. WHEN USED AS SERVICE EQUIPMENT, BOND NEUTRAL AND APPLY *SERVICE DISCONNECT* LABEL NEAR THE DISCONNECT HANDLE.

DEVICE RATING: 100 AMPS MAXIMUM; 120/240 VAC (4 JAW METER), SINGLE PHASE. THREE WIRE: OR 208Y/120 VAC (5 JAW METER), THREE WIRE.

LIMITED TO TWO POLE BREAKERS.

METER SOCKET RATING: 100 AMPS CONTINUOUS.

THIS DEVICE HAS A MAXIMUM SHORT CIRCUIT RATING OF 65,000 RMS SYMMETRICAL AMPERES AT 240 VAC MAXIMUM. (WATT HOUR METER NOT INCLUDED IN THE SHORT CIRCUIT CURRENT RATING). THE ACTUAL RATING IS DEPENDENT ON THE BRANCH BREAKER INSTALLED IN THIS PANELBOARD AND THE REMOTE MAIN BREAKER OR FUSE DEVICE, IF ANY, INSTALLED AHEAD OF THIS PANELBOARD. THE CORRECT BRANCH BREAKERS AND MAIN SERIES COMBINATIONS TO BE USED WITH THE VARIOUS SHORT CIRCUIT CURRENT RATINGS ARE LISTED IN THE TABULATION BELOW. ANY CIRCUIT BREAKER INSTALLED OR REPLACED IN THIS PANELBOARD MUST BE MANUFACTURED BY SIEMENS AND MUST BE OF THE CORRECT TYPE AS INDICATED IN THE TABULATION BELOW

MAX short circuit current rating in RMS symmetrical Amperes	BRANCH BREAKERS		MAIN
	FIELD INSTALLED 2 POLE CIRCUIT BREAKER TYPES		
65,000	Murray MP-MT, MP-MT or Siemens OP, OPH, HQP	Murray MP-MT or Siemens HQP	100A MAX 300 VAC CLASS T FUSE
42,000	Murray MP-MT, MP-MT or Siemens OPH, HQP	Murray MP-MT or Siemens HQP	NONE OR ANY 100A MAX *FUSE OR * BREAKER
22,000	Murray MP-MT, MP-MT or Siemens OPH, HQP	Murray MP-MT, MP-MT or Siemens OPH, HQP	
10,000	MURRAY MP-T, MP-GT OR Siemens OP, QPF	MURRAY MP-T, MP-GT OR Siemens OP, QPF	

*FUSE or *BREAKER RATING MUST BE GREATER THAN OR EQUAL TO THE DEVICE SHORT CIRCUIT CURRENT RATING.

TERMINAL RANGES - AWG AND TORQUE (LB-IN) TERMINALS RATED AL/CU EXCEPT AS NOTED.

PHASE LINE: #2/0-6: TORQUE (110)

NEUTRAL LINE: #1/0-14;

TORQUE #1/0-3 (50), #4-6 (45), #6 (40), #10-14 (35)

NEUTRAL LOAD, SERVICE GROUND: #1/0-14CU, #1/0-12AL (LARGE TERMINALS):

TORQUE #1/0-6 (45), #8 (40), #10-14 (35)

EQUIPMENT GROUND: #6-14CU, #6-12AL (SMALL TERMINALS):

TORQUE #6 (35), #8 (25), #10-14 (20).

TEST BLOCK CONTACT NUT (5/8" ACROSS FLATS), TORQUE 50 LB-IN.

TERMINALS SUITABLE FOR USE WITH 60/75° C, AL/CU INSULATED WIRE.

FOR EQUIPMENT GROUND BAR ORDER ECLX SERIES. FOR 5TH JAW ORDER EC5J, IF HUB IS REQUIRED SELECT FROM LIST BELOW.

RX TYPE HUBS

SIZE	CAT. NO
1 1/4"	EC38597
1 1/2"	EC38598
2"	EC38599
2 1/2"	EC38600

UNLESS OTHERWISE SPECIFIED DIMENSIONS ARE IN INCHES

TOLERANCES:

.XX

.XXX

HOLE DIAMETER

ANGULAR

UNDIMENSIONED 90° ANGLES

DWN WRB DATE 5/8/07

CHK DATE

APVD DATE

SIZE B

ISSUE RELEASE NO.

DWG NO. MM0202L1100EY

REV

SCALE

DO NOT SCALE DRAWING

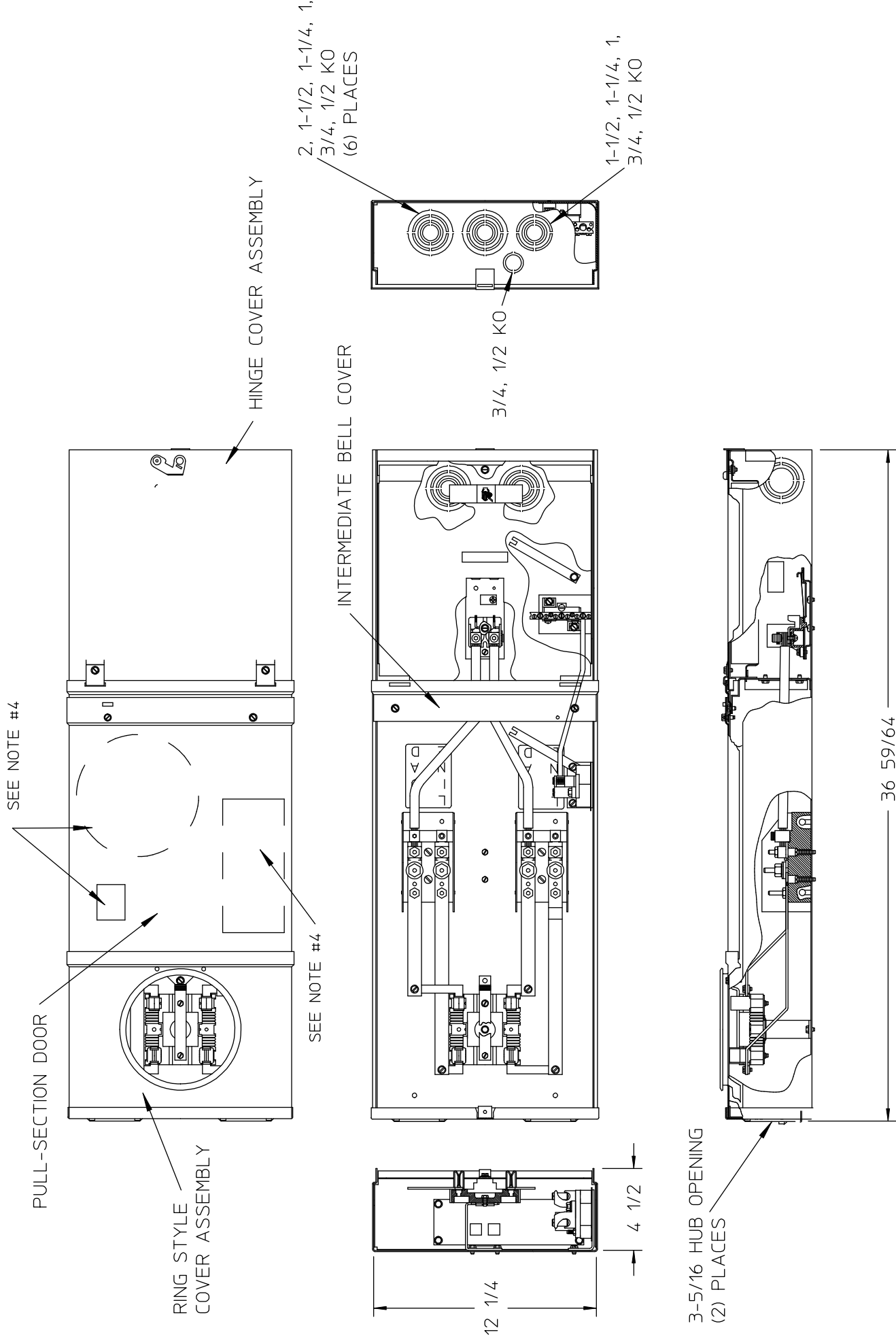
SHEET 1 OF 1

-CONFIDENTIAL-PROPERTY OF

Siemens Energy & Automation, Inc.

Residential Products Division

SKT 100A 1P (2)HO EUSERC



NOTES:

1. FINISH: GRAY
2. CABINET: 16 GA GALV STEEL.
3. 100 AMP, 120/240 VAC, 1PHASE, 3 WIRE
4. SEALING RING, HUB COVER PLATE ASSEMBLY, & NEMA INSTRUCTION SHEET PLSCED IN APPROX. LOCATION SHOWN INSIDE OF BOX BEFORE PULL-SECTION COVER IS SECURED.
5. UL LISTED - E27485