
 TECHNICAL DATA SHEET

Compression couplings, threadless

Malleable iron / Zinc plated

Steel City[®]


Compression couplings are for use on threaded conduit.

Certifications / Standards:


3-Part Specification: 26 05 33.53
End User Tools

Features:

- Heavy duty iron bodies with continuous threading
- Extra-thick electro-plated zinc finish
- Dependable pipe stop

Applications:

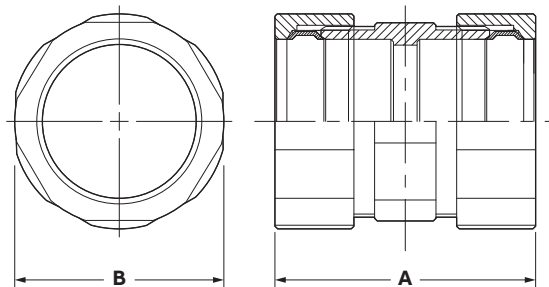
- Used to join two lengths of RMC without need for threading

Conforms to:

- UL Listed
 - File number: E-23018 ½"-1¼"

Materials / Finishes:
Sub paragraph:

- Material: Malleable iron
- Finish: Zinc plated



Product selection - inches

| Part no: | Conduit Trade Size | Length A | Width B |
|----------|--------------------|----------|---------|
| HK 401 | ½ | 1.781 | 1.125 |
| HK 402 | ¾ | 1.969 | 1.375 |
| HK 403 | 1 | 2.125 | 1.688 |
| HK 404 | 1¼ | 2.578 | 2.156 |
| HK 405 | 1½ | 2.718 | 2.359 |
| HK 406 | 2 | 3.000 | 2.750 |
| HK 407 | 2½ | 6.250 | 4.125 |
| HK 408 | 3 | 6.250 | 4.500 |
| HK 409 | 3½ | 6.170 | 5.500 |
| HK 410 | 4 | 6.420 | 5.938 |

Note: Product must be installed in accordance with applicable national and local electrical codes.

tnb.abb.com (US/Latin America)
tnb.ca.abb.com (Canada)
abb.com

We reserve the right to make technical changes or modify the contents of this document without prior notice. With regard to purchase orders, the agreed particulars shall prevail. ABB does not accept any responsibility whatsoever for potential errors or possible lack of information in this document.

We reserve all rights in this document and in the subject matter and illustrations contained therein. Any reproduction – in whole or in part – is forbidden without prior written consent of ABB.
 © 2020 ABB Installation Products Inc. and/or its related companies. All Rights Reserved.