

BALDOR • RELIANCE

**Super RPM DC Motor
Frames B500ATZ through B840AT**

Designed for operation with an SCR Control

Installation & Operating Manual

Any trademarks used in this manual are the property of their respective owners.

Table of Contents

Section 1

General Information	1-1
Overview	1-1
Limited Warranty	1-1
Safety Notice	1-1
Receiving	1-3
Handling	1-3
Storage	1-3

Section 2

Installation & Operation	2-1
Overview	2-1
Considerations	2-1
Location	2-1
Ambient	2-2
Maximum Safe Speed	2-2
Minimum Sheave Diameters	2-2
Shaft Extension and Method of Drive	2-2
Shaft Loads – Axial and Radial	2-3
Installation	2-3
Alignment	2-4
Doweling & Bolting	2-4
Guarding	2-4
Electrical Installation	2-5
Terminal Box	2-5
Power	2-5
Motor Connections	2-6
Thermostat Connection	2-7
Grounding	2-7
Overspeed Switch	2-7
Feedback Connections	2-7
Blower Motor Connection	2-7
First Time Start Up	2-8
Operation Considerations	2-9
Inertia and Weights	2-10
Suggested bearing and winding RTD setting guidelines for Non-Hazardous Locations ONLY	2-10

Section 3

Maintenance & Troubleshooting	3-1
General Inspection	3-1
Relubrication & Bearings	3-1
Brushes	3-3
Troubleshooting	3-4
Armature Overheating	3-4
Field Coil Overheating	3-4
Excessive Load	3-4
Jogging and Repeated Starts	3-4
Heating	3-4
Thermostat	3-5
Checking Relative Polarity Of DC Motor Fields	3-5
Troubleshooting Chart	3-6
Humidity And Brush Wear	3-7
Guide To Commutator Appearance	3-8

Section 4

Connection Diagrams	4-1
----------------------------------	-----



Section 1

General Information

Overview This manual contains general procedures that apply to Baldor Motor products. Be sure to read and understand the Safety Notice statements in this manual. For your protection, do not install, operate or attempt to perform maintenance procedures until you understand the **Warning and Caution** statements. A **Warning** statement indicates a possible unsafe condition that can cause harm to personnel. A **Caution** statement indicates a condition that can cause damage to equipment.

Important: **This instruction manual is not intended to include a comprehensive listing of all details for all procedures required for installation, operation and maintenance. This manual describes general guidelines that apply to most of the motor products shipped by Baldor. If you have a question about a procedure or are uncertain about any detail, Do Not Proceed. Please contact your Baldor distributor for more information or clarification.**

Before you install, operate or perform maintenance, become familiar with the following:

- NEMA Publication MG-2, Safety Standard for Construction and guide for Selection, Installation and Use of Electric Motors and Generators.
- ANSI C51.1
- The National Electrical Code
- IEC
- Local codes and Practices

Limited Warranty

www.baldor.com/support/warranty_standard.asp

Safety Notice: This equipment contains high voltage! Electrical shock can cause serious or fatal injury. Only qualified personnel should attempt installation, operation and maintenance of electrical equipment.

Be sure that you are completely familiar with NEMA publication MG-2, safety standards for construction and guide for selection, installation and use of electric motors and generators, the National Electrical Code, IEC and local codes and practices. Unsafe installation or use can cause conditions that lead to serious or fatal injury. Only qualified personnel should attempt the installation, operation and maintenance of this equipment.

WARNING: **Do not touch electrical connections before you first ensure that power has been disconnected. Electrical shock can cause serious or fatal injury. Only qualified personnel should attempt the installation, operation and maintenance of this equipment.**

WARNING: **Be sure the system is properly grounded before applying power. Do not apply power before you ensure that all grounding instructions have been followed. Electrical shock can cause serious or fatal injury. National Electrical Code, IEC and Local codes must be carefully followed.**

WARNING: **Avoid extended exposure to machinery with high noise levels. Be sure to wear ear protective devices to reduce harmful effects to your hearing.**

WARNING: **Surface temperatures of motor enclosures may reach temperatures which can cause discomfort or injury to personnel accidentally coming into contact with hot surfaces. Protection should be provided by the user to protect against accidental contact with hot surfaces. Failure to observe this precaution could result in bodily injury.**

WARNING: **This equipment may be connected to other machinery that has rotating parts or parts that are driven by this equipment. Improper use can cause serious or fatal injury. Only qualified personnel should attempt to install operate or maintain this equipment.**

WARNING: **Do not by-pass or disable protective devices or safety guards. Safety features are designed to prevent damage to personnel or equipment. These devices can only provide protection if they remain operative.**

WARNING: **Avoid the use of automatic reset devices if the automatic restarting of equipment can be hazardous to personnel or equipment.**

WARNING: **Incorrect motor rotation direction can cause serious or fatal injury or equipment damage. Be sure to verify motor rotation direction before coupling the load to the motor shaft.**

WARNING: **Be sure the load is properly coupled to the motor shaft before applying power. The shaft key must be fully captive by the load device. Improper coupling can cause harm to personnel or equipment if the load decouples from the shaft during operation.**

WARNING: **Use proper care and procedures that are safe during handling, lifting, installing, operating and maintaining operations. Improper methods may cause muscle strain or other harm.**

WARNING: **Thermostat contacts automatically reset when the motor has slightly cooled down. To prevent injury or damage, the control circuit should be designed so that automatic starting of the motor is not possible when the thermostat resets.**

Safety Notice Continued

- WARNING:** UL Listed motors must only be serviced by UL Approved Authorized Baldor Service Centers if these motors are to be returned to a hazardous and/or explosive atmosphere.
- WARNING:** Pacemaker danger – Magnetic and electromagnetic fields in the vicinity of current carrying carrying conductors and permanent magnet motors can result result in a serious health hazard to persons with cardiac pacemakers, metal implants, and hearing aids. To avoid risk, stay way from the area surrounding a permanent magnet motor.
- WARNING:** The SCR Controller may apply hazardous voltages to the motor leads after power to the controller has been turned off. Verify that the controller is incapable of delivering hazardous voltages and that the voltage at the motor leads is zero before proceeding. Failure to observe this precaution may result in severe bodily injury or death.
- WARNING:** Before performing any motor maintenance procedure, be sure that the equipment connected to the motor shaft cannot cause shaft rotation. If the load can cause shaft rotation, disconnect the load from the motor shaft before maintenance is performed. Unexpected mechanical rotation of the motor parts can cause injury or motor damage.
- WARNING:** Do not use non UL/CSA listed explosion proof motors in the presence of flammable or combustible vapors or dust. These motors are not designed for atmospheric conditions that require explosion proof operation.
- WARNING:** Motors that are to be used in flammable and/or explosive atmospheres must display the UL label on the nameplate along with CSA listed logo. Specific service conditions for these motors are defined in NFPA 70 (NEC) Article 500.
- WARNING:** Guards must be installed for rotating parts such as couplings, pulleys, external fans, and unused shaft extensions, should be permanently guarded to prevent accidental contact by personnel. Accidental contact with body parts or clothing can cause serious or fatal injury.
- Caution:** To prevent premature equipment failure or damage, only qualified maintenance personnel should perform maintenance.
- Caution:** Do not over-lubricate motor as this may cause premature bearing failure.
- Caution:** Do not lift the motor and its driven load by the motor lifting hardware. The motor lifting hardware is adequate for lifting only the motor. Disconnect the load (gears, pumps, compressors, or other driven equipment) from the motor shaft before lifting the motor.
- Caution:** If eye bolts are used for lifting a motor, be sure they are securely tightened. The lifting direction should not exceed a 20° angle from the shank of the eye bolt or lifting lug. Excessive lifting angles can cause damage.
- Caution:** To prevent equipment damage, be sure that the electrical service is not capable of delivering more than the maximum motor rated amps listed on the rating plate.
- Caution:** If a HI POT test (High Potential Insulation test) must be performed, follow the precautions and procedure in NEMA MG1 and MG2 standards to avoid equipment damage.
- Caution:** Do not use Silicone grease or Sealing Compounds (RTV) on or in the vicinity of the motor or its air supply. Silicone vapor inside the motor will result in extremely rapid brush wear.
- Caution:** Vertical mount hand hole covers are required to provide protection to vertically mounted drip-proof motors. Stock motors and other motors designed for horizontal mounting can be adapted for vertical mounting by ordering vertical mount hand hole covers from Baldor.
- Caution:** Use of these radial load capacities requires the accurate calculation of the radial load for the application. Radial loads for gears, sprockets, and flywheel are usually accurately determined. Radial loads for V-belt drives are subject to error due to the exclusion of pre-tension load (belt tightening). The calculations of the radial load for a V-belt drive must include the pre-tension for transmitting the horsepower, pre-tension for centrifugal force on the belts, Pre-tension for high start torques, Rapid acceleration or deceleration, Pre-tension for drives with short arc-of-contact between the V-belt and sheave and low coefficient of friction between belt and sheave caused by moisture, oil or dust.
- Caution:** Series wound motors must never be allowed to run with no load (broken belt etc.) An unloaded motor may reach destructive high speeds.
- Caution:** Motors designed for forced ventilation must have cooling air when fields are excited at rated voltage. Installations having the air supply interrupted when the motor is not operating must have field disconnected or field voltage reduced to 50% rated by means of field economizing resistor and relay or motor insulation life will be significantly reduced.

If you have any questions or are uncertain about any statement or procedure, or if you require additional information please contact your Baldor distributor or an Authorized Baldor Service Center.

Receiving

Each Baldor Electric Motor is thoroughly tested at the factory and carefully packaged for shipment. When you receive your motor, there are several things you should do immediately.

1. Observe the condition of the shipping container and report any damage immediately to the commercial carrier that delivered your motor.
2. Verify that the part number of the motor you received is the same as the part number listed on your purchase order.

Handling

The motor should be lifted using the lifting lugs or eye bolts provided.

1. Use the lugs or eye bolts provided to lift the motor. Never attempt to lift the motor and additional equipment connected to the motor by this method. The lugs or eye bolts provided are designed to lift only the motor. Never lift the motor by the motor shaft or the hood of a WP11 motor. If eye bolts are used for lifting a motor, be sure they are securely tightened. The lifting direction should not exceed a 20° angle from the shank of the eye bolt. Excessive lifting angles can cause motor damage.
2. To avoid condensation inside the motor, do not unpack until the motor has reached room temperature. (Room temperature is the temperature of the room in which it will be installed). The packing provides insulation from temperature changes during transportation.
3. When lifting a WP11 (Weather Proof Type 2) motor, do not lift the motor by inserting lifting lugs into holes on top of the cooling hood. These lugs are to be used for hood removal only. A spreader bar should be used to lift the motor by the cast lifting lugs located on the motor frame.
4. If the motor must be mounted to a plate with the driven equipment such as pump, compressor etc., it may not be possible to lift the motor alone. For this case, the assembly should be lifted by a sling around the mounting base. The entire assembly can be lifted as an assembly for installation. Do not lift the assembly using the motor lugs or eye bolts provided. Lugs or eye bolts are designed to lift motor only. If the load is unbalanced (as with couplings or additional attachments) additional slings or other means must be used to prevent tipping. In any event, the load must be secure before lifting.

Storage

Storage requirements for motors and generators that will not be placed in service for at least six months from date of shipment. Improper motor storage will result in seriously reduced reliability and failure. An electric motor that does not experience regular usage while being exposed to normally humid atmospheric conditions is likely to develop rust in the bearings or rust particles from surrounding surfaces may contaminate the bearings. The electrical insulation may absorb an excessive amount of moisture leading to the motor winding failure.

A wooden crate "shell" should be constructed to secure the motor during storage. This is similar to an export box but the sides & top must be secured to the wooden base with lag bolts (not nailed as export boxes are) to allow opening and reclosing many times without damage to the "shell".

Minimum resistance of motor winding insulation is 5 Meg ohms or the calculated minimum, which ever is greater. Minimum resistance is calculated as follows: $R_m = kV + 1$

where: (R_m is minimum resistance to ground in Meg-Ohms and
kV is rated nameplate voltage defined as Kilo-Volts.)

Example: For a 480VAC rated motor R_m = 1.48 meg-ohms (use 5 MΩ).

For a 4160VAC rated motor R_m = 5.16 meg-ohms.

Preparation for Storage

1. Some motors have a shipping brace attached to the shaft to prevent damage during transportation. The shipping brace, if provided, must be removed and stored for future use. The brace must be reinstalled to hold the shaft firmly in place against the bearing before the motor is moved.
2. Store in a clean, dry, protected warehouse where control is maintained as follows:
 - a. Shock or vibration must not exceed 2 mils maximum at 60 hertz, to prevent the bearings from brinelling. If shock or vibration exceeds this limit vibration isolation pads must be used.
 - b. Storage temperatures of 10°C (50°F) to 49°C (120°F) must be maintained.
 - c. Relative humidity must not exceed 60%.
 - d. Motor space heaters (when present) are to be connected and energized whenever there is a possibility that the storage ambient conditions will reach the dew point. Space heaters are optional.
Note: Remove motor from containers when heaters are energized, reprotect if necessary.
3. Measure and record the resistance of the winding insulation (dielectric withstand) every 30 days of storage.
 - a. If motor insulation resistance decreases below the minimum resistance, contact your Baldor District office.
 - b. Place new desiccant inside the vapor bag and re-seal by taping it closed.

-
- c. If a zipper-closing type bag is used instead of the heat-sealed type bag, zip the bag closed instead of taping it. Be sure to place new desiccant inside bag after each monthly inspection.
 - d. Place the shell over the motor and secure with lag bolts.
 4. Where motors are mounted to machinery, the mounting must be such that the drains and breathers are fully operable and are at the lowest point of the motor. Vertical motors must be stored in the vertical position. Storage environment must be maintained as stated in step 2.
 5. Motors with anti-friction bearings are to be greased at the time of going into extended storage with periodic service as follows:
 - a. Motors marked "Do Not Lubricate" on the nameplate do not need to be greased before or during storage.
 - b. Ball and roller bearing (anti-friction) motor shafts are to be rotated manually every six months and greased in accordance with the Maintenance section of this manual.
 - c. Sleeve bearing (oil lube) motors are drained of oil prior to shipment. The oil reservoirs must be refilled to the indicated level with the specified lubricant, (see Maintenance). The shaft should be rotated monthly by hand at least 10 to 15 revolutions to distribute oil to bearing surfaces.
 - d. "Provisions for oil mist lubrication" – These motors are packed with grease. Storage procedures are the same as paragraph 5b.
 - e. "Oil Mist Lubricated" – These bearings are protected for temporary storage by a corrosion inhibitor. If stored for greater than 3 months or outdoor storage is anticipated, connected to the oil mist system while in storage. If this is not possible, add the amount of grease indicated under "Standard Condition" in Section 3, then rotate the shaft 15 times by hand.
 6. All breather drains are to be fully operable while in storage (drain plugs removed). The motors must be stored so that the drain is at the lowest point. All breathers and automatic "T" drains must be operable to allow breathing and draining at points other than through the bearings around the shaft. Vertical motors should be stored in a safe stable vertical position.
 7. Coat all external machined surfaces with a rust preventing material. An acceptable product for this purpose is Exxon Rust Ban # 392.
 8. Carbon brushes should be lifted and held in place in the holders, above the commutator, by the brush holder fingers. The commutator should be wrapped with a suitable material such as cardboard paper as a mechanical protection against damage.

Non-Regreaseable Motors

Non-regreaseable motors with "Do Not Lubricate" on the nameplate should have the motor shaft rotated 15 times to redistribute the grease within the bearing every 3 months or more often.

All Other Motor Types

Before storage, the following procedure must be performed.

1. Remove the grease drain plug, if supplied, (opposite the grease fitting) on the bottom of each bracket prior to lubricating the motor.
2. The motor with regreaseable bearing must be greased as instructed in Section 3 of this manual.
3. Replace the grease drain plug after greasing.
4. The motor shaft must be rotated a minimum of 15 times after greasing.
5. Motor Shafts are to be rotated at least 15 revolutions manually every 3 months and additional grease added every nine months (see Section 3) to each bearing.
6. Bearings are to be greased at the time of removal from storage.

Removal From Storage

1. Remove all packing material.
2. Measure and record the electrical resistance of the winding insulation resistance meter at the time of removal from storage. The insulation resistance must not be less than 50% from the initial reading recorded when the motor was placed into storage. A decrease in resistance indicates moisture in the windings and necessitates electrical or mechanical drying before the motor can be placed into service. If resistance is low, contact your Baldor District office.
3. Regrease the bearings as instructed in Section 3 of this manual.
4. Reinstall the original shipping brace if motor is to be moved. This will hold the shaft firmly against the bearing and prevent damage during movement.

Section 2 Installation & Operation

Overview

Installation should conform to the National Electrical Code, IEC as well as local codes and practices. When other devices are coupled to the shaft, be sure to install protective devices to prevent future accidents. Some protective devices include, coupling, belt guard, chain guard, shaft covers etc. These protect against accidental contact with moving parts. Machinery that is accessible to personnel should provide more protection in the form of guard rails, screening, warning signs etc.

Considerations

Caution: Do not lift the motor and its driven load by the motor lifting hardware. The motor lifting hardware is adequate for lifting only the motor. Disconnect the load (gears, pumps, compressors, or other driven equipment) from the motor shaft before lifting the motor.

Caution: If eye bolts are used for lifting a motor, be sure they are securely tightened. The lifting direction should not exceed a 20° angle from the shank of the eye bolt or lifting lug. Excessive lifting angles can cause damage.

After storage or after unpacking and inspection to see that all parts are in good condition, do the following:

1. Rotate the motor or generator shaft by hand to be sure there are no obstructions to free rotation.
2. A motor or generator that has been in storage for >3 months should be tested for moisture (dielectric withstand insulation test) and relubricated (if regreaseable type) prior to being put into service.
3. A motor with roller bearings is shipped with a shaft block. After removing the shaft block, be sure to replace any bolts used to hold the shaft block in place during shipment that are required in service.

Caution: Do not use Silicone Sealing Compounds (RTV) on or in the vicinity of the motor or its air supply. Silicone vapor inside the motor will result in extremely rapid brush wear.

Location Air Supply

Provide sufficient clearance for all inlet and outlet openings to provide unrestricted air flow. Separately ventilated motors with exhaust to ambient (pipe-in only). Allow at least 6 in minimum between the openings and adjacent walls or floor for frames through B680ATZ and 8 in clearance for B840 frame.

Cooling air through a self-ventilated or forced-ventilated motor must be clean and have relative humidity between 30 and 100% with no free water in the air. Use of damp, cool outside air with high humidity and free water may cause the motor to flash over. Extremely dry air may cause excessive brush and commutator wear. Cooling air temperature must not exceed the maximum ambient temperature indicated on the motor nameplate (Standard 40°C). Cooling air temperature must be less than than 0°C to provide base speed and regulation within NEMA limits. Use of air <0°C may cause excessive brush and commutator wear due to the low relative humidity. Cooling air absolute humidity must be at least 2 grains per cu. ft.

Table 2-1 Required Air Volume

Frame	Base Speed RPM	Required Air Flow Clearance	Air Volume		Static Pressure	
			CFM	M ³ /Sec	in-H ₂ O	mm-H ₂ O
B506ATZ	All		1200	0.5663364	1.75	44.45
B507ATZ	All		1200	0.5663364	1.75	44.45
B508ATZ	All except 1750 at 500hp		1200	0.5663364	1.75	44.45
B508ATZ	1750 at 500hp		1450	0.68432315	2.00	50.80
B509ATZ	All		1450	0.68432315	2.00	20.80
B5010ATZ	All		1450	0.68432315	2.00	50.80
B587ATZ	All except 1750 at 600hp		2000	0.943894	2.25	57.15
B587ATZ	1750 at 600hp		2400	1.1326728	3.40	86.36
B588ATZ	All		2000	0.943894	2.25	57.15
B589ATZ	All		2000	0.943894	2.25	57.15
B5810ATZ	All		2400	1.1326728	3.40	86.36
B686ATZ	All		2200	1.0382834	1.75	44.45
B687ATZ	All		2200	1.0382834	1.75	44.45
B688ATZ	All		2200	1.0382834	1.75	44.45
B689ATZ	All		2875	1.356847625	3.00	76.20
B840ATZ	All		6000	2.831682	5.00	127.00

Ambient

The motor or generator should be installed in a location compatible with the enclosure and specific ambient. Allow adequate air flow clearance between the motor and any obstruction, see Table 2-1. Locate the machine where the ambient temperature is not over 40°C (104°F) unless otherwise marked on the nameplate and where clean air has free access to ventilating intake and outlet openings. Except for machines with a suitable protective enclosure, the location should be clean and dry.

Note: Motors located in damp, moist environment must have space heater, or fields energized at 50% voltage to protect against condensation when motor is not operating.

Separately ventilated motors must have sufficient volume of air to adequately cool the motor unless the motor nameplate specifies a different value, see Table 2-1. If used, ventilating air filters must be kept clean or replaced to ensure full volume of cooling air.

Maximum Safe Speed

The maximum safe speed shown on the nameplate is the maximum mechanical safe speed for motor operation. This speed must not be exceeded under any condition. Motor control must not exceed the maximum speed for all load conditions including no-load. Drive systems whose design characteristics inherently prevent the DC motor or generator from exceeding the maximum safe operating speed must also prevent the motor or generator from exceeding the maximum safe speed if a single component failure should occur.

Table 2-2 Maximum Safe Speed

Frame	Max Safe RPM	Frame	Max Safe RPM	Frame	Max Safe RPM
B506ATZ	2650	B587ATZ	2475	B686ATZ	2100
B507ATZ	2650	B588ATZ	2475	B687ATZ	2100
B508ATZ	2650	B589ATZ	2475	B688ATZ	2100
B509ATZ	2450	BB589ATZ	2200	B689ATZ	1930
B510ATZ	2155	BB5810ATZ	2030	B840ATZ	1720

Minimum Sheave Diameters

To avoid excessive bearing loads and shaft stresses, belts should not be tightened more than necessary to transmit the rated torque. The pre-tensioning of the V-belt drive should be based on the total tightening force required to transmit the horsepower divided by the number of belts.

In general, the closer pulleys, sheaves, sprockets or gears are mounted to the bearing on the shaft, the less will be the load on the bearing. The center point of the belt, or system of V-belts, must not be beyond the end of the shaft. The inner edge of the sheave or pulley rim should not be closer to the bearing than the shoulder on the shaft but should be as close to this point as possible.

The outer edge of a chain sprocket or gear must not extend beyond the end of the shaft.

To obtain the minimum pitch diameters for flat belt, timing-belt, chain and gear drives, apply the multiplier given in Table 2-3 to the minimum sheave diameter calculated for V-belt drives.

Shaft Extension and Method of Drive

Frame B500ATZ has a larger shaft when belted drives are specified. UB580ATZ has the same shaft size for for either belted or coupled duty. However, roller bearings are required for belted duty.

Table 2-3 Multipliers For Drives Other Than V-Belt

Drive	Multiplier	Drive	Multiplier
Flat Belt ¹	1.33	Spur Gear	.75
Timing Belt ²	0.9	Helical Gear	0.85
Chain Sprocket	0.7		

¹ Multiplier is intended for use with conventional single-ply flat, belts.

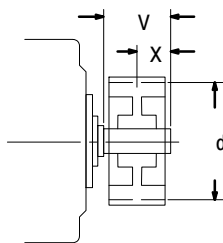
When other than single-ply flat belts are used, the use of a larger multiplier is recommended.

² It is often necessary to install belts with a snug fit.

However, tension should be no more than necessary to avoid belt slap or tooth jumping.

Figure 2-1

Minimum pitch diameters of sheaves must not be smaller than the values calculated where the sheave center line is toward the motor from the end of the shaft



Where: D = minimum pitch diameter of V-belt sheave in inches or millimeters.
 hp = rated horsepower at base speed.
 kW = rated kilowatts at base speed.
 x = axial distance of sheave center line from shaft end (inches or mm) Measured toward motor from shaft end.
 A, B, C & D are constants from Table 2-4 that correspond to motor base speed.

$$d_{\text{inches}} = \frac{hp}{100} (A-Bx)$$

$$d_{\text{millimeters}} = \frac{kW}{100} (C-Dx)$$

Table 2-4 Constants for Calculating Minimum Sheave Diameters for V-Belt Drives

Frame	"V" Dim.	Constant	Base Speed RPM							
			300	400	500	650	850	1150	1750	
UB500ATZ	8.00 in	A	20.1	16.1	13.5	11.0	8.9			
		B	0.68	0.54	0.46	0.37	0.30			
	203.2 mm	C	685	549	460	375	303			
		D	0.91	0.72	0.62	0.50	0.40			
UB580ATZ	8.00 in	A	20.1	16.1	13.5	11.0	8.9			
		B	0.74	0.59	0.49	0.40	0.33			
	203.2 mm	C	685	549	460	375	303			
		D	0.99	0.79	0.66	0.54	0.44			
B680ATZ	8.75 in	A	Non-Standard – Consult Baldor Electric							
		B								
	222.2	C								
		D								

Caution: Use of these radial load capacities requires the accurate calculation of the radial load. Radial loads for gears, sprockets, and flywheel are usually accurately determined but the radial loads due to V-belt drives are subject to miscalculations because they do not include all of the pre-tension load (belt tightening). The calculations of the radial load for a V-belt drive must include the pre-tension for transmitting the horsepower, pretension for centrifugal force on the belts, pre-tension for high start torques, rapid acceleration or deceleration, pre-tension for drives with short act-of-contact between the V-belt and sheave, and low coefficient of friction between belt and sheave caused by moisture, oil or dust. Over tension of the V-Belts may result in damage to the motor or driven equipment. Unless otherwise indicated, V-belt load must not exceed values given in Table 2-5.

Shaft Loads – Axial and Radial

Super RPM motors are suitable for limited shaft loads as shown in Tables 2-5 and 2-6. Recommended maximum thrust loads depend on the mounting position, either horizontal or vertical. For recommendations for loads in excess of those shown, for higher speeds and special shaft extensions contact your local Baldor District office.

Table 2-5 Axial Thrust Capacity – lb (kg)

Frame	Horizontal Mounting				Vertical Mounting			
	2500 RPM	1750 RPM	1150 RPM	850 RPM	2500 RPM	1750 RPM	1150 RPM	850 RPM
B500ATZ	1280 (581)	1550 (703)	1920 (871)	2175 (987)	1200±1056 (544±479)	1475±1056 (669±479)	1825±1056 (828±479)	2075±1056 (941±479)
B580ATZ	1540 (699)	1890 (857)	2400 (1089)	2750 (1247)		1790±1678 (812±761)	2275±1678 (1032±761)	2630±1678 (1193±761)
B680ATZ	1325 (601)	1675 (760)	2150 (975)	2550 (1157)				
B842AT		2030 (921)	2600 (1179)	3050 (1383)				
B843AT		1980 (898)	2530 (1148)	2975 (1349)				
B844AT		1925 (873)	2480 (1125)	2925 (1327)				
B845AT		1860 (844)	2425 (1100)	2850 (1293)				
B846AT		1780 (807)	2330 (1057)	2750 (1247)				
B847AT		1730 (785)	2270 (1030)	2680 (1216)				

Table 2-6 Radial Load Capacity

Frame	Radial Load Capacities at the End of the Shaft in lb(kg)			
	2500 RPM	1750 RPM	1150 RPM	850 RPM
UB500ATZ	3625 (1646)	4090 (1857)	4700 (2134)	5190 (2356)
UB580ATZ	2275 (1033)	2275 (1033)	2275 (1033)	2275 (1033)
B680ATZ, B840ATZ	For coupled duty only. No belted drives.			

Data for motors with roller bearings at the drive end (back end). Motors with ball bearings at the drive end are for coupled duty only.

Installation

All Super RPM motors are designed to be mounted by the "Mounting Feet" (hardware not furnished). Motor or generator must be mounted on a rigid, solid base or foundation. (Poor base construction may cause resonances in the motor/base assembly which can result in bearing failure and other damage.) Frames B500ATZ-B680ATZ will operate when mounted to the floor, wall or ceiling and with the shaft at any angle from horizontal to vertical. End brackets and outer caps can be rotated 90°-180° for access to grease fittings and air openings. Hand hole covers can be interchanged. All hold down bolts must be the correct grade for the type of mounting and must be tightened to their recommended torque value, Table 2-7. Foundation caps and sole plates are designed to act as spacers for the equipment they support. If these devices are used, be sure that they are evenly supported by the foundation or mounting surface.

When installation is complete and accurate alignment of the motor or generator and load is accomplished, the base should be grouted to the foundation to maintain this alignment.

Table 2-7 SAE Grade 1 Foot Bolt Information

Frame	Hole Diameter in(mm)	Bolt Size	Tightening Torque SAE Grade 1 Dry – non lubricated lb-ft (NM)
B500ATZ	1.19 (30.23)	1-8	320 (435.2)
B580ATZ	1.44 (36.58)	1.25-7	640 (870.4)
B680ATZ	1.44 (36.58)	1.25-7	640 (870.4)
B840ATZ	1.69 (42.93)	1.5-6	1010 (1373.6)

Shipping Blocks

Motors supplied with roller bearings at the drive end are shipped with wooden blocking to prevent axial movement of the shaft during shipment. Remove the blocking and bolts securing it and discard. Make sure motor shafts turn freely. If motor is to be reshipped, blocking of bearing is required.

Alignment

Accurate alignment of the motor with the driven equipment is extremely important. Proper alignment is a key step for long life of bearings, shafts and belts, and minimum downtime. Misalignment can cause excessive vibration and damaging forces on shaft and bearings. For direct coupled drives, flexible couplings facilitate alignment. For belt drives, the driving and driven tension must be adjusted as required for proper operation. The belt sheave should be placed as close as possible to the motor bracket.

For direct drive, flexible couplings must be used between the motor shaft and the load shaft. Motor shaft and load shaft must be aligned to values recommended for the specific coupling before coupling is connected. Mechanical vibration and roughness during operation may indicate poor alignment. Use dial indicators to check alignment. The space between coupling hubs should be maintained as recommended by the coupling manufacturer.

Caution: Do not over tension belts. Improper tension can damage bearings and belts.

Belt Drive

The motor shaft and the load shaft must be parallel and align sheaves carefully to minimize belt wear and axial bearing loads (see End-Play Adjustment). Belt tension should be sufficient to prevent belt slippage at rated speed and load. However, belt slippage may occur during starting.

**Caution: Series wound motors must never be allowed to run with no load (broken belt etc.)
An unloaded motor may reach destructive high speeds.**

Doweling & Bolting After proper alignment is verified, dowel pins should be inserted through the motor feet into the foundation. This will maintain the correct motor position should motor removal be required. (Baldor•Reliance motors are designed for doweling.)

1. Drill dowel holes in diagonally opposite motor feet in the locations provided.
2. Drill corresponding holes in the foundation.
3. Ream all holes.
4. Install proper fitting dowels.
5. Mounting bolts must be carefully tightened to prevent changes in alignment.
Use a flat washer and lock washer under each nut or bolt head to hold the motor feet secure.
Flanged nuts or bolts may be used as an alternative to washers.

Guarding

WARNING: Guards must be installed for rotating parts such as couplings, pulleys, external fans, belts, chains and unused shaft extensions, should be permanently guarded to prevent accidental contact by personnel. Accidental contact with body parts or clothing can cause serious or fatal injury.

Guards must be installed for rotating parts such as couplings, pulleys, external fans, and unused shaft extensions. This is particularly important where the parts have surface irregularities such as keys, key ways or set screws.

Surface temperature of motor enclosure may reach temperatures which can cause discomfort or injury to personnel accidentally coming into contact with hot surfaces. When installing, protection should be provided by user to protect against accidental contact with hot surface.

Some satisfactory methods of guarding are:

1. Covering the machine and associated rotating parts with structural or decorative parts of the driven equipment.
2. Providing covers for the rotating parts. Covers should be sufficiently rigid to maintain adequate guarding during normal service.

Electrical Installation

WARNING: Do not touch electrical connections before you first ensure that power has been disconnected. Electrical shock can cause serious or fatal injury. Only qualified personnel should attempt the installation, operation and maintenance of this equipment.

WARNING: The SCR Controller may apply hazardous voltages to the motor leads after power to the controller has been turned off. Verify that the controller is incapable of delivering hazardous voltages and that the voltage at the motor leads is zero before proceeding. Failure to observe this precaution may result in severe bodily injury or death.

Terminal Box Conduit boxes can be rotated in 90° increments for lead outlet at top, sides or bottom. Conduit box location can be changed from F1 to F2 or F2 to F1 by rotating the commutator end bracket 180° and reconnecting the leads.

Power Check the motor nameplate and the SCR Control nameplate to be sure the voltage and type of power rating is the same for both. The power code of the motor and power source should be the same. The letter code for the control may be equal or less than the motor. For example a motor with a “D” power code may be used on a supply with a “D” or “C” or less code. Table 2–8 defines these codes.

Table 2–8 Power Codes

Code	Description
A	DC Generator, battery or twelve pulse/cycle 6 phase, full control
C	Six pulse/cycle, 3 phase, full control, 230VAC or 460VAC, 60Hz, input to rectifier.
D	Three pulse/cycle, 3 phase, semi-bridge, half control, 230VAC or 460VAC, 60Hz, input to rectifier.
E	Three pulse/cycle, 3 phase, half wave (single way), 460VAC, 60Hz, input to rectifier.
K	Two pulse/cycle, single phase, full wave (bridge circuit with 2 controlled rectifiers and 2 uncontrolled rectifiers with free-wheeling rectifier), 230VAC, 60Hz, input to rectifier.

When the armature power supply cannot be designated by a single letter code (A–K) the power source can be determined by the code stamped on the nameplate:

M/N F–V–H–L

Where:

- M Total pulses per cycle
- N Total controlled pulses per cycle
- F Free Wheeling (if used), F=used, blank=not used
- V Nominal Line-to-Line voltage at input to rectifier
- H Line frequency (in Hz)
- L Value of inductance (in milli henries) to be added externally to the motor armature circuit

Example 1: “6/3 F-380-60-12”

Requires a power supply with 6 total pulses per cycle, 3 controlled pulses per cycle (S-3), with free wheeling, 380 volts, 60 Hz AC input to bridge, and a 12 millinery choke to be added externally to the motor armature circuit.

WARNING: Be sure the system is properly grounded before applying power. Do not apply power before you ensure that all grounding instructions have been followed. Electrical shock can cause serious or fatal injury. National Electrical Code, IEC and Local codes must be carefully followed.

Motor Connections Connect the motor leads from the DC Control as shown on the connection diagram located on the name plate or inside the cover on the conduit box.

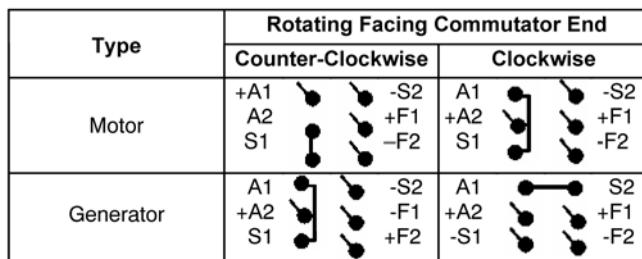
If motor has **parallel leads**, connect all lugs with the same marking (for example, A1, A1) together.

If motor has **dual voltage shunt fields**, connections must be made for the appropriate voltage.

Be sure the following guidelines are met:

1. DC power is within $\pm 5\%$ of rated voltage (not to exceed 500VDC). (See motor name plate for ratings).
OR
2. DC field power is within $\pm 1\%$ of rated voltage.

Figure 2-2 Motor and Generator Connections



If motor has no series field, disregard S1 and S2.

Tables 2-9 and 2-10 show the NEMA standard lead markings and the accessory markings.

If motor is supplied with dual voltage shunt fields, connections must be made for appropriate voltage.

Table 2-9 NEMA Standard Lead Markings

Lead Markings	Motor
Armature	A1, A2
Field (shunt)	F1, F2, F3, F4, etc.
Field (series)	S1, S2
Thermostat	P1, P2, etc.
Space Heater	H1, H2, H3, H4, etc.
Thermal Protector	P1, P2, P3, P4, etc.
Resistance Temperature Detector (RTD)	R1, R2, R3, R4, etc.
Optional Brush Monitor System	A1Probe, A2Probe

Table 2-10 Accessory Markings

DC Tachometers	+	—	
XPY	1	2	G
XC	Red (1)	Black (2)	G
RL			
AC Tachometers 45/90V Output			
45V	Red	White	
90V	Red	Black	
Brake Coil Leads	B1, B2, B3, etc.		
Space Heater (Brake)	H1, H2, H3, H4, etc.		
Brake Interlock Switch	BS1, BS2, BS3, etc.		

Thermostat Connection

Motors may have one or more thermostats (leads marked P1, P2, etc.) to indicate motor overheating. Thermostat contacts must be connected in the motor control or indicating circuit. Failure to connect the thermostat leads will void the motor warranty. Thermostat contact ratings are listed below.

Motors having thermistors or resistance temperature detectors to indicate motor over temperature must have these devices connected in the proper control circuit to protect the motor.

Follow the SCR control instruction manual for correct thermostat lead connections.

Table 2-11 Thermostat Ratings

Maximum Current Ratings for Thermostats (Normally Open or Closed Contacts)		
Voltage	125VAC	250VAC
Rated Current	0.2A	0.1A
Maximum Current	3.0A	1.5A

Grounding In the USA consult the National Electrical Code, Article 430 for information on grounding of motors and generators, and Article 250 for general information on grounding. In making the ground connection, the installer should make certain that there is a solid and permanent metallic connection between the ground point, the motor or generator terminal housing, and the motor or generator frame.

Motors with resilient cushion rings usually must be provided with a bonding conductor across the resilient member. Some motors are supplied with the bonding conductor on the concealed side of the cushion ring to protect the bond from damage. Motors with bonded cushion rings should usually be grounded at the time of installation in accordance with the above recommendations for making ground connections. When motors with bonded cushion rings are used in multimotor installations employing group fusing or group protection, the bonding of the cushion ring should be checked to determine that it is adequate for the rating of the branch circuit over current protective device being used.

There are applications where grounding the exterior parts of a motor or generator may result in greater hazard by increasing the possibility of a person in the area simultaneously contacting ground and some other nearby live electrical parts of other ungrounded electrical equipment. In portable equipment it is difficult to be sure that a positive ground connection is maintained as the equipment is moved, and providing a grounding conductor may lead to a false sense of security.

Select a motor starter and over current protection suitable for this motor and its application. Consult motor starter application data as well as the National Electrical Code, IEC and/or other applicable local codes.

Due to the higher switching frequencies of inverter controls, the ground connection/path must be low impedance, not only low resistance.

Overspeed Switch Motors having an overspeed switch must have the overspeed switch terminals properly connected in the control circuit to remove armature power when the motor reaches maximum speed.

Feedback Connections Tach or Encoder

Due to the wide variety of brands and types of feedback devices available, please consult the installation and instruction diagrams provided with the device.

Blower Motor Connection Three phase blower motors.

Blower cooled motors incorporate an independently powered three phase AC blower motor to assure continuous cooling air flow regardless of motor speed.

The specific blower motor depends on frame size and enclosure.

Note: Blower motor fuse protection kits are required for blower motor overload protection.

WARNING: Incorrect motor rotation direction can cause serious or fatal injury or equipment damage. Be sure to verify motor rotation direction before coupling the load to the motor shaft.

WARNING: Guards must be installed for rotating parts such as couplings, pulleys, external fans, and unused shaft extensions, should be permanently guarded to prevent accidental contact by personnel. Accidental contact with body parts or clothing can cause serious or fatal injury.

WARNING: Be sure the system is properly grounded before applying power. Do not apply power before you ensure that all grounding instructions have been followed. Electrical shock can cause serious or fatal injury. National Electrical Code, IEC and Local codes must be carefully followed.

Caution: Do not operate motors with a roller bearing unless a radial load is applied so that damage to the roller bearing does not occur.

First Time Start Up If motor has been in storage or idle for some time, check winding insulation integrity.

1. Be sure that all power to motor and accessories is off.
2. Disconnect motor shaft from the load.
3. Manually rotate the motor shaft to ensure that it rotates freely.
4. The brushes should move easily in their holders and should make proper contact on the commutator.
5. The interior of the motor should be clean and dry.
4. Couple the load to the motor shaft.
6. Install all panels and covers that were removed during installation.
7. Verify the mechanical installation is secure. All bolts and nuts are tightened etc., covers and protective devices are securely in their places.
8. Remove all unused shaft keys and loose rotating parts to prevent them from flying off.
5. The driven machine should be unloaded if possible.
9. Ensure that all separately excited fields are excited at their rated voltage and that relative polarities of all fields are correct. Refer to checking relative polarity of DC motor fields.
10. When motor or generator is supplied as part of drive system, refer to the drive system instruction manual for operating instructions. Tachometer feedback must be properly connected for closed loop operation. Reversed polarity or broken connections can cause dangerous overspeed conditions.
11. Inspect all electrical connections for proper termination, clearance, mechanical strength and electrical continuity.
12. Be sure all shipping materials and braces (if used) are removed from motor shaft.
13. Unless otherwise ordered, brush rigging is assembled for standard direction of rotation, counterclockwise for motors and clockwise for generators facing the commutator end. Super RPM motors and generators operate in either direction of rotation.

Caution: Motors designed for cooling by a separate source of forced ventilation must not be operated without the air supply. Be sure blower is running in proper direction to avoid motor overheating.

14. Start the motor and ensure rotation is correct and operation is smooth without excessive vibration or noise. If rotation direction is incorrect, change the direction in the SCR Control programming.

Note: When starting, small sparks may appear on the commutator due to particles of dirt.

Other than this, there should be few if any, sparking at the brushes.

WARNING: Surface temperatures of motor enclosures may reach temperatures which can cause discomfort or injury to personnel accidentally coming into contact with hot surfaces. Protection should be provided by the user to protect against accidental contact with hot surfaces. Failure to observe this precaution could result in bodily injury.

15. After 1 hour of operation, disconnect power and connect the load to the motor shaft. Verify all coupling guards and protective devices are installed. Ensure motor is properly ventilated.
16. If motor is totally enclosed fan-cooled or non-ventilated it is recommended that condensation drain plugs, if present, be removed. These are located in the lower portion of the end-shields. Totally enclosed fan-cooled "XT" motors are normally equipped with automatic drains which may be left in place as received.

While operating the motor, observe the performance. It should run smoothly with little noise. The bearings should not overheat and should reach normal operating temperature. Any undue noise, overheating, or erratic performance should be investigated and necessary corrective action taken immediately to prevent serious damage. Refer to Maintenance and Troubleshooting section of this manual. Super RPM motors are lubricated before shipment and will operate for a long period before regreasing is required. The period will vary depending on environmental and service conditions. Refer to Maintenance section.

Operation Considerations

- WARNING:** Do not touch electrical connections before you first ensure that power has been disconnected. Electrical shock can cause serious or fatal injury. Only qualified personnel should attempt the installation, operation and maintenance of this equipment.
- WARNING:** Surface temperatures of motor enclosures may reach temperatures which can cause discomfort or injury to personnel accidentally coming into contact with hot surfaces. When installing, protection should be provided by the user to protect against accidental contact with hot surfaces. Failure to observe this precaution could result in bodily injury.
- WARNING:** Incorrect motor rotation direction can cause serious or fatal injury or equipment damage. Be sure to verify motor rotation direction before coupling the load to the motor shaft.
- WARNING:** Guards must be installed for rotating parts such as couplings, pulleys, external fans, and unused shaft extensions, should be permanently guarded to prevent accidental contact by personnel. Accidental contact with body parts or clothing can cause serious or fatal injury.
- WARNING:** Thermostat contacts automatically reset when the motor has slightly cooled down. To prevent injury or damage, the control circuit should be designed so that automatic starting of the motor is not possible when the thermostat resets.
- Caution:** Do not operate motors with a roller bearing unless a radial load is applied so that damage to the roller bearing does not occur.

Direction of Rotation

Unless otherwise ordered, brush rigging is assembled for standard direction of rotation, counterclockwise for motors and clockwise for generators facing the commutator end. Super RPM machines will operate in either direction of rotation, without changing the angle of the brush holders for normal field weakened speed ranges. Extended field weakened speed range motors should have the direction of rotation specified.

Motor Performance

During operation observe the motors' performance. It should run smoothly with little noise. The bearings should not overheat and should reach a normal operating temperature. Any undue noise, overheating, or erratic performance should be investigated and corrective action taken immediately to prevent serious damage.

Super RPM motors are lubricated before shipment and will operate for a long period before regreasing is required. The period will vary depending on environmental and service conditions. Refer to Maintenance section of this manual.

Balance

Motors are dynamically balanced to commercial limits unless ordered differently. Balance is done with a full length $\frac{1}{2}$ height shaft key. A full shaft key is shipped with motor. Sheave or coupling should be balanced with a $\frac{1}{2}$ height shaft key.

Table 2-12 Dynamic Balance Limits

Rated RPM	Max Amplitude inches
3000-4000	0.0010
1500-2900	0.0015
1000-1499	0.0020
≤999	0.0025

SCR Control Settings

Be sure to properly set the Control parameters according to the Motor Nameplate ratings. Many parameter values can be set but as a minimum the following are very important:

Acceleration/Deceleration time	Set according to the load requirements to prevent excess heat buildup.
Field Control Parameters	Field Power Supply settings, limits and gain settings.
Control Output Limits	Minimum and Maximum Speed values and Current Limit values.
Control Output Protection values	Overload, Torque and other values to protect the motor.
Feedback parameters	Set according to the feedback device being used.

Inertia and Weights

Starting load inertia and motor weights are listed in Table 2–13. These are approximate values for system calculations.

Table 2–13 Inertia and Weight

Frame Size	Wk ² [lb-ft ²]	Weight lb(kg)		Frame Size	Wk ² [lb-ft ²]	Motor Weight lb(kg)	
		Motor only	w/ Blower & Filter			Motor only	w/ Blower & Filter
B506ATZ	108	2530 (1147)	2675 (1213)	B686ATZ	578	6820 (3093)	6985 (3168)
B507ATZ	126	2960 (1342)	3105 (1408)	B687ATZ	633	7490 (3397)	7655 (3472)
B508ATZ	144	3355 (1521)	3500 (1587)	B688ATZ	731	8650 (3923)	8815 (3998)
B509ATZ	174	3650 (1655)	3865 (1753)	B689ATZ	819	9370 (4250)	9535 (4325)
B5010ATZ	202	4050 (1837)	4235 (1920)				
B587ATZ	282	4505 (2043)	4670 (2118)	B842ATZ	1044	10635 (4824)	11160 (5062)
BB587ATZ	296	4587 (2082)	4852 (2202)	B843ATZ	1144	11570 (5248)	12095 (5486)
B588ATZ	319	5090 (2308)	5255 (2383)	B844ATZ	1224	12380 (5615)	12905 (5853)
B589ATZ	350	5490 (2490)	5655 (2565)	B845ATZ	1365	13615 (6175)	14140 (6413)
B5810ATZ	398	6035 (2737)	6300 (2857)	B846ATZ	1465	14720 (6677)	15245 (6915)
				B847ATZ	1565	15575 (7064)	16100 (7302)

Table 2–13 is for estimating purposes only.

Suggested bearing and winding RTD setting guidelines for Non-Hazardous Locations ONLY

The following table shows the suggested alarm and trip settings for RTDs. Proper bearing and winding RTD alarm and trip settings should be selected based on these tables unless otherwise specified for specific applications.

If the driven load is found to operate well below the initial temperature settings under normal conditions, the alarm and trip settings may be reduced so that an abnormal machine load will be identified.

The temperature limits are based on the installation of the winding RTDs imbedded in the winding as specified by NEMA. Bearing RTDs should be installed so they are in contact with the outer race on ball or roller bearings or in direct contact with the sleeve bearing shell.

Winding RTDs – Temperature Limit In °C (40°C Maximum Ambient)

Type	Class F Temp Rise	
	Alarm	Trip
Winding	160	170
Bearing	110	120

Note: • Winding RTDs are factory production installed, not from Mod-Express.

Section 3

Maintenance & Troubleshooting

- WARNING:** UL Listed motors must only be serviced by UL Approved Authorized Baldor Service Centers if these motors are to be returned to a hazardous and/or explosive atmosphere.
- WARNING:** Do not touch electrical connections before you first ensure that power has been disconnected. Electrical shock can cause serious or fatal injury. Only qualified personnel should attempt the installation, operation and maintenance of this equipment.
- WARNING:** The SCR Controller may apply hazardous voltages to the motor leads after power to the controller has been turned off. Verify that the controller is incapable of delivering hazardous voltages and that the voltage at the motor leads is zero before proceeding. Failure to observe this precaution may result in severe bodily injury or death.
- WARNING:** Surface temperatures of motor enclosures may reach temperatures which can cause discomfort or injury to personnel accidentally coming into contact with hot surfaces. When installing, protection should be provided by the user to protect against accidental contact with hot surfaces. Failure to observe this precaution could result in bodily injury.
- WARNING:** Guards must be installed for rotating parts such as couplings, pulleys, external fans, and unused shaft extensions, should be permanently guarded to prevent accidental contact by personnel. Accidental contact with body parts or clothing can cause serious or fatal injury.

General Inspection Inspect the motor at regular intervals, approximately every 500 hours of operation or every 3 months, whichever occurs first. Keep the motor clean and the ventilation openings clear.

The following steps should be performed at each inspection:

1. Check that the motor is clean. Check that the interior and exterior of the motor is free of dirt, oil, grease, water, etc. Oily vapor, paper pulp, textile lint, etc. can accumulate and block motor ventilation. If the motor is not properly ventilated, overheating can occur and cause early motor failure.
2. Perform a dielectric with stand test periodically to ensure that the integrity of the winding insulation has been maintained. Record the readings. Immediately investigate any significant decrease in insulation resistance.
3. Check all electrical connectors to be sure that they are tight.
4. If used, ventilating air filters must be kept clean or replaced to ensure full volume of cooling air.

Caution: Do not use Silicone grease or Sealing Compounds (RTV) on or in the vicinity of the motor or its air supply. Silicone vapor inside the motor will result in extremely rapid brush wear.

Relubrication & Bearings Bearing grease will lose its lubricating ability over time, not suddenly.

The lubricating ability of a grease (over time) depends primarily on the type of grease, the size of the bearing, the speed at which the bearing operates and the severity of the operating conditions. Good results can be obtained if the following recommendations are used in your maintenance program. Relubrication with the shaft stationary and a warm motor is recommended.

Procedure Super RPM motors have the exclusive Positive Lubrication System PLS® which routes new grease directly into the bearing. The relubrication periods shown in Table 3-3 are offered as a guide for varying service conditions, speeds, bearing types and operating hours.

Note: Certain special motors may have a lubrication instruction plate permanently attached.

These specific lubricating instructions must be followed.

1. Relubrication with the shaft stationary and a warm motor is recommended. If lubrication must be done with motor running, stay clear of rotating parts and electrical circuits.
2. Wipe all dirt from the outside of the grease fills and drains.
3. Locate the grease inlet at the top of the bearing hub, clean the area and replace the 1/8-inch pipe plug with a grease fitting if the motor is not equipped with grease fitting.
4. Remove grease drain plug located opposite the grease inlet.
5. **Use the correct grease.** If the motor nameplate does not specify a special grease use Mobil PolyrexEM.

Using a manual grease gun, pump in the recommended grease in the amount shown, Table 3-1. This amount of grease will provide an ample supply of lubricant between lubrication periods for the service condition listed in Tables 3-2 and 3-3. Use only clean, fresh grease from clean containers and handle so as to keep it clean. In general, mixing of greases is not recommended. If an incompatible grease is used, the lube system must be thoroughly cleaned and repacked completely with the new grease.

6. Wipe away any excess grease at the grease drain or relief and replace drain plugs.

Table 3-1 Relubrication Amount

Frame Size	Coupled Duty				Tandem Duty			
	Volume		Weight		Volume		Weight	
	in ³	cm ³	oz	g	in ³	cm ³	oz	g
B500ATZ	2.0	33	1.0	28	2.8	46	1.5	42
B580ATZ	2.8	46	1.5	42	2.8	46	1.5	42
B680ATZ	2.8	46	1.5	42	3.7	61	2.0	56
B840ATZ	4.0	66	2.2	62	5.5	90	3.0	84

Determine service condition on the basis of the most severe operating parameter; that is temperature, bearing load, atmosphere, or operating hours per day.

Table 3-2 Service Condition

Service Condition	Ambient	Use/Day	Atmosphere	Bearing Load
Standard	-18°C to 40°C (0°F to 104°F)	8	Clean	Steady
Severe	-30°C to 50°C (-22°F to 122°F)	8 to 24	Medium Dirt, Abrasives, Corrosion	Medium Shock, Vibration (less than .2 in/sec.)
Extreme ^②	-54°C to 65°C (-65°F to 149°F) ^①	8 to 24	Heavy Dirt, Abrasives, Corrosion	Heavy Shock, Vibration (more than .44 in/sec)

① – Motors must be specially designed for operation in ambient outside the range -30°C to 40°C (-22°F to 104°F).

② – Extreme service conditions are rare and corresponding lubrication cycles should be applied with caution.

Table 3-3 Relubrication Periods For Super RPM Motors – Frames B500ATZ – B840AT

① Maximum Normal Operating Speed RPM	Frame	Relubrication Interval in Months ②		
		Standard Service	Severe Service	Extreme Service
2400 to 3449	B500ATZ to B500ATZ	9	3	1
1700 to 2399	B500ATZ to B680ATZ	18	6	2
	UB500ATZ to UB680ATZ	9	3	1
800 to 1699	B500ATZ to B680ATZ	36	12	3
	UB500ATZ to UB680ATZ	18	6	1
	B840AT	12	6	1
500 to 799	B500ATZ to B680ATZ	36	24	8
	UB500ATZ to UB680ATZ	18	12	4
	B840AT	36	18	3
≤ 499	B500ATZ to B680ATZ	48	36	12
	UB500ATZ to UB680ATZ	24	18	6

① – Maximum speed occurs more than 30% of operating time.

② – For Tandem drives increase frequency of lubrication by multiplying values by 0.8

-
- WARNING:** Do not touch electrical connections before you first ensure that power has been disconnected. Electrical shock can cause serious or fatal injury. Only qualified personnel should attempt the installation, operation and maintenance of this equipment.
- WARNING:** The SCR Controller may apply hazardous voltages to the motor leads after power to the controller has been turned off. Verify that the controller is incapable of delivering hazardous voltages and that the voltage at the motor leads is zero before proceeding. Failure to observe this precaution may result in severe bodily injury or death.
- WARNING:** Surface temperatures of motor enclosures may reach temperatures which can cause discomfort or injury to personnel accidentally coming into contact with hot surfaces. Protection should be provided by the user to protect against accidental contact with hot surfaces. Failure to observe this precaution could result in bodily injury.

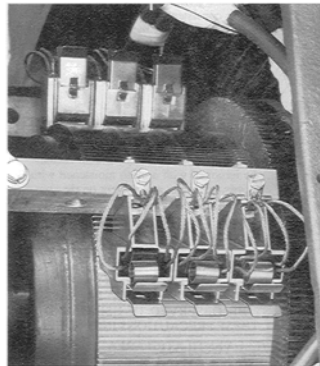
Brushes

Brush pressure is correctly established at the factory and maintained at the correct value throughout the life of the brush by means of a constant pressure design. Brushes and brush-holders should be clean so that the brushes are free to move in the holders. Replace brushes with new brushes of the same grade before wear permits the rivet or tamped pigtail to score the commutator. It is best to change out the complete set. The brush holders in all Super RPM motors are of constant pressure design and are not adjustable.

Brush Change procedure

1. Be sure all power is disconnected and no voltage is present at the motor leads.
2. Remove hand hole covers from each side of the opposite drive end bracket.
3. Fit the face of new brushes to the contour of the commutator with sandpaper only, no emery abrasive. Keep brush lead (pigtail) connections tight and leads positioned away from brush spring assembly.
4. Install the hand hole covers to each side of the commutator bracket.
5. Restore power.

Figure 3-1



Commutator and
brush rigging

Commutator

A commutator in good condition is clean and smooth with a medium polish and a light brown color. Keep clean by occasionally wiping with a canvas pad. Use no lubricant or emery abrasive. If a commutator becomes rough, it needs to be resurfaced.

Brakes

Motor mounted brake, when supplied, must be adjusted and maintained in accordance with the instructions for the specific brake. Refer to separate instructions supplied.

Troubleshooting

- WARNING:** Do not touch electrical connections before you first ensure that power has been disconnected. Electrical shock can cause serious or fatal injury. Only qualified personnel should attempt the installation, operation and maintenance of this equipment.
- WARNING:** The SCR Controller may apply hazardous voltages to the motor leads after power to the controller has been turned off. Verify that the controller is incapable of delivering hazardous voltages and that the voltage at the motor leads is zero before proceeding. Failure to observe this precaution may result in severe bodily injury or death.
- WARNING:** Surface temperatures of motor enclosures may reach temperatures which can cause discomfort or injury to personnel accidentally coming into contact with hot surfaces. Protection should be provided by the user to protect against accidental contact with hot surfaces. Failure to observe this precaution could result in bodily injury.

Armature Overheating Excessive overloads will cause a noticeable odor of overheated varnish or charred insulation. The commutator may eventually become blackened and pitted and the brushes burned. This overheating may be general and uniform. Remedy, remove the overload and rewind or replace armature if damaged beyond use.

An open-circuited armature coil will cause flashing at the commutator. Two adjacent bars will show severe burning and a resulting overheated armature. Short-circuited coils or commutator bars may cause local heating that could destroy the insulation at that spot. This may result in the burning of the armature coils, banding or commutator bars.

Grounds in the armature circuit may be found by measuring insulation resistance from the motor frame and to a commutator bar. If the armature is grounded, the resistance is less than 1 meg ohm.

Field Coil Overheating Standard continuous duty DPG, TEFC and TENV stabilized shunt wound Super RPM DC Motors have continuous duty fields capable of continuous excitation at standstill (armature circuit not energized) under normal industrial conditions.

Note: Motors designed for forced ventilation or with a dual cooled heat exchanger must have cooling air when fields are excited at rated voltage. If air supply is interrupted when the motor is not operating must have field disconnected or field voltage must be reduced to 50% rated with field economizing resistor and relay.

Standard continuous duty self ventilated motors are suitable for operation at rated load and rated speed at field voltages up to 110% rated value. However, insulation life will be reduced if operated below 60% of base speed for prolonged periods.

Excessive Load Excessive load may be found by checking the DC armature ampere input and comparing it with the rating on the nameplate. An excessive load may prevent the motor from starting or accelerating to full load speed. It could finally result in premature failure of the motor or control. Be sure to use an averaging type ammeter if the motor's power is coming from a rectifier or SCR control.

Jogging and Repeated Starts

Repeated starts or jogs of motors may reduce the life of the brushes and winding insulation. The heat produced by excessive starting may be more than what can be dissipated by the motor under a constant full load conditions. If you must frequently start or jog a motor, you should check the application with the local Baldor District Office.

Heating Duty cycle and maximum ambient temperature are shown on the nameplate of the motor. If there is any question about safe operation, contact the local Baldor District Office.

Motor overheating may be caused by improper ventilation, excessive ambient temperature, dirty conditions or an inoperable blower or dirty filter. Electrical causes may be due to excess current caused by an overload or over-voltage to the fields.

Thermostat Most stock Baldor DC motors 180 frame and above have a standard temperature-sensing thermostat mounted to their interpole winding. This normally closed thermostat opens when the temperature limit is exceeded. Another option available is a normally open thermostat that closes with temperature.

On blower cooled or separately ventilated motors, the protection capabilities of the thermostats are greatly reduced at low speeds. This is because the interpoles have the same amount of heat transfer regardless of speed. Armature heat transfer is less at low speed. There is less internal air turbulence at low speeds causing higher temperatures at the armature.

The thermal time constant for interpoles can be as much as five times longer than the armature's time constant. Because of this, the thermostat cannot be relied upon to protect the armature during extreme overloads lasting a short time.

The ripple of the rectified power supply and manufacturing tolerances of mounting the device affect the thermostat's accuracy.

For thermostat contact ratings, refer to Thermostats in Section 2 of this manual.

Checking Relative Polarity Of DC Motor Fields

Motor speed is unstable if speed increases due to an increase in load current. As a result of instability, motor speed may hunt or overspeed. One possible cause of unstable performance of shunt wound DC motors is incorrect series field polarity relative to the shunt field due to improper connection.

Relative polarity of the shunt and series fields can be checked as follows:

1. Connect a low scale (3 volts) DC voltmeter across the shunt field terminals P1 and P2 with P1 connected to the positive (+) meter terminal. At least one of the shunt field leads must be disconnected from the controller.
2. Use two flashlight batteries as a source of low voltage (3 volts). Connect the negative battery post to the S-2 series field terminal. Hold one end of a jumper wire to the positive (+) battery post so the other end of the wire can be used to make and break contact with the S-1 series field terminal.
3. The procedure is to watch the deflection of the voltmeter needle when contact is made with S-1 and when contact is broken.
4. When contact is made, the needle will first deflect in either the up scale or down scale direction and then return to zero. Deflection will be in the opposite direction when contact is broken.
5. Relative polarities of the shunt and series fields are correct (ampere-turns are cumulative) if the voltmeter needle deflects up scale when contact is made and down scale when contact is broken.
6. Relative polarities of the shunt and series fields are incorrect (ampere-turns are differential) if the voltmeter needle deflects down scale when contact is made and up scale when contact is broken. The motor connections must be changed so that relative polarity is correct.

If only one series field terminal is available at the controller, use it and the available armature terminal for the test. For example, use S-2 and A-1 if S-1 and A-2 are connected together at the motor and not brought to the controller.

Table 3-4 Troubleshooting Chart

Symptom	Possible Causes	Possible Solutions
Motor will not start	Usually caused by line trouble, such as, single phasing at the starter.	Check source of power. Check overloads, fuses, controls, etc.
Excessive humming	High Voltage.	Check input line connections.
	Loose pole pieces.	Torque the bolts as specified in Table NO TAG.
Motor Over Heating	Overload. Compare actual amps (measured) with nameplate rating.	Locate and remove source of excessive friction in motor or load. Reduce load or replace with motor of greater capacity.
	Improper ventilation.	Check external cooling blower to be sure air is moving properly across cooling fins. Check blower for proper direction of rotation. Check motor brush covers to ensure they are solid on the commutator end and that they are not louvered. Check filter for dirt, clean or replace. Excessive dirt build-up on motor. Clean motor.
	Armature rubbing on stator.	Check air gap clearance and bearings.
		Tighten "Thru Bolts" that hold the endplates to frame.
	Field over voltage.	Check input voltage.
	Full voltage on field with motor stopped.	Reduce field voltage to 60% with field economy circuit in the control.
	Grounded winding.	Perform dielectric test and repair as required.
	Improper connections.	Inspect all electrical connections for proper termination, clearance, mechanical strength and electrical continuity. Refer to connection diagram.
Bearing Over Heating	Misalignment.	Check and align motor and driven equipment.
	Excessive belt tension.	Reduce belt tension to proper point for load.
	Excessive end thrust.	Reduce the end thrust from driven machine.
	Excessive grease in bearing.	Remove grease until cavity is approximately $\frac{3}{4}$ filled.
	Insufficient grease in bearing.	Add grease until cavity is approximately $\frac{3}{4}$ filled.
	Dirt in bearing.	Contact your Baldor Service Center.
Vibration	Misalignment.	Check and align motor and driven equipment.
	Rubbing between rotating parts and stationary parts.	Isolate and eliminate cause of rubbing.
	Armature out of balance.	Have armature balance checked and repaired at your Baldor Service Center.
	Resonance.	Contact your Baldor Service Center.
Noise	Foreign material in air gap or ventilation openings.	Contact your Baldor Service Center.
Growling or whining	Bad bearing.	Replace bearing.
Excessive sparking at motor or generator commutator.	Sparking	1. Dirty or corroded commutator due to dirt, ambient contaminants, oil or oil mist, etc. 2. Brushes incorrectly seated. 3. High or feather-edged mica. 4. Faulty machine adjustment. 5. Interpoles failed or improperly adjusted. 6. Loss of brush spring tension. 7. Brushes sticking in brush holder. 8. Unit overload. 9. Defective commutator or armature. 10. Unequal spacing of holders around commutator.
High commutator bars produce a rough commutator.	Generally associated with sparking and noisy operation of the brushes on the commutator.	Loose commutator.
Low commutator bars produce rough commutator.	Generally associated with sparking and noisy operation of the brushes on the commutator.	1. Loose commutator. 2. High mica. 3. Open or high resistance connection at commutator.

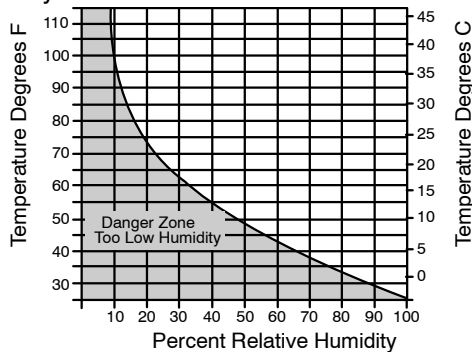
Table 3-4 Troubleshooting Chart Continued

Symptom	Possible Causes	Possible Solutions
Streaking or threading of commutator surface.	Rough commutator with associated sparking. Fine lines in brush track.	<ol style="list-style-type: none"> 1. Low average current density in brushes due to light machine loading. 2. Contaminated atmosphere. 3. Oil on commutator or oil mist in air. 4. Humidity too low. 5. Lack of film forming properties in brush. 6. Brush too abrasive.
Bar etching or burning.	Rough commutator with associated sparking and eventual flashover.	<ol style="list-style-type: none"> 1. High mica. 2. Operation of machine with brushes off neutral. 3. Commutator dirty. 4. Incorrect spring tension. 5. Machine overload or rapid load change such as plugging.
Bar marking at pole-pitch spacing.	<ol style="list-style-type: none"> 1. Two bars marking 180° apart on 4-pole machine at start. 2. Three bars marking 120° apart on 6-pole machine at start. □ 3. As pitch bar marking progresses, it will eventually show at all bars on the machine. 4. Associated sparking and eventual flashover 	<ol style="list-style-type: none"> 1. Shorted commutator bars or coils. 2. Open armature or field circuit. 3. Unequal air gap. 4. Cyclic disturbance either electrical or mechanical.
Bar marking at slot-pitch spacing.	Sparking and marking of one or more bars at equal spacing around commutator according to bar-per-slot ratio with eventual flashover.	Unequal compensation of armature coils. The energy unbalance is reflected into the last coil in the slot to undergo commutation, and will result in a spark at the brush.
Rapid commutator or brush wear.	Bright commutator surface.	<ol style="list-style-type: none"> 1. Abrasive material under brush. 2. Too abrasive a brush. 3. Low average brush current density due to light machine loading. 4. Contaminated atmosphere. 5. Humidity too low. 6. Incorrect brush tension.

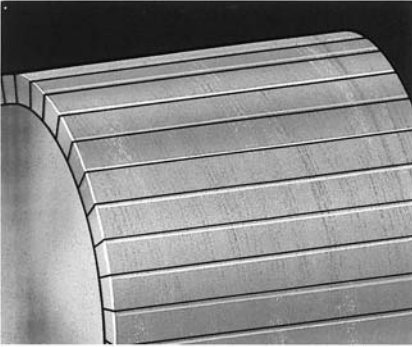
□ - Four bars marking 90° apart on 8-pole motor at start.

Humidity And Brush Wear This curve represents 2 grains of water per cubic foot of dry air or 4.6 grams per cubic meter of dry air.

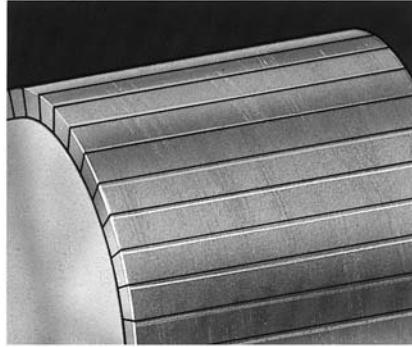
Zone of Safe Brush Operation



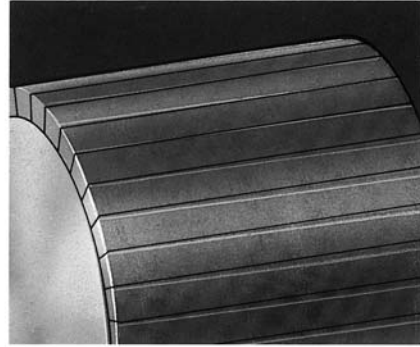
Guide To Commutator Appearance



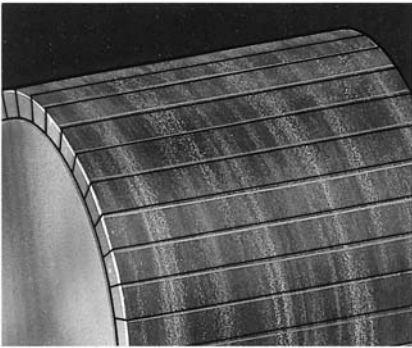
Light Film: Indicates good brush performance. Light load, low humidity, brush grades with low filming rates, or film reducing contamination can cause lighter color.



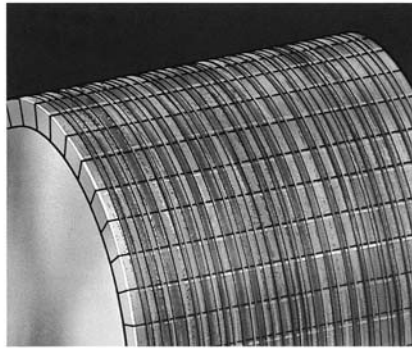
Medium Film: Is the ideal commutator condition for maximum brush and commutator life.



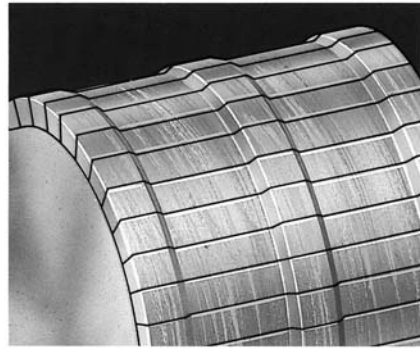
Heavy Film: Results from high load, high humidity or heavy filming rate grades. Colors not in the brown tones indicate contamination resulting in high friction and high resistance.



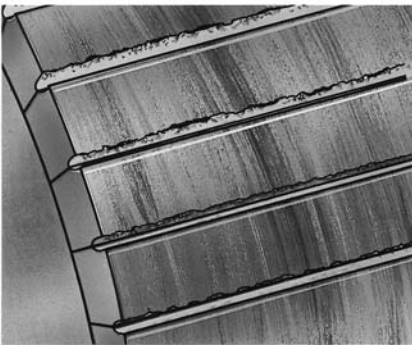
Straking: Results from metal transfer to the brush face. Light loads and/or light spring pressure are most common causes. Contamination can also be a contributing factor.



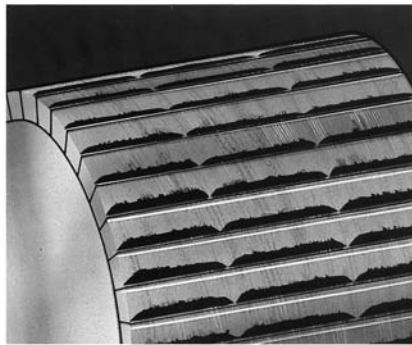
Threading: Is a further development of the straking condition as the metal transferred becomes work hardened and machines into the commutator surface. With increased loads and increased spring pressure this condition can be avoided.



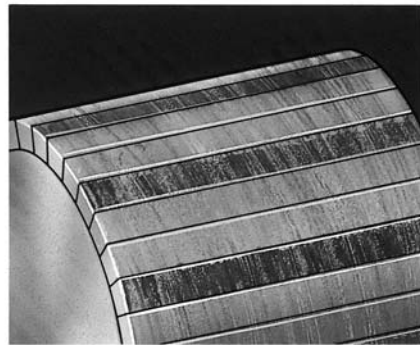
Grooving: May result from an overly abrasive brush grade. The more common cause is poor electrical contact resulting in arcing and the electrical machining of the commutator surface. Increased spring pressure reduces this electrical wear.



Copper Drag: Develops as the commutator surface becomes overheated and softened. Vibration or an abrasive grade causes the copper to be pulled across the slots. Increased spring pressure will reduce commutator temperature.



Bar Edge Burning: Results from poor commutation. Check that brush grade has adequate voltage drop, that the brushes are properly set on neutral and that the interpole strength is correct.

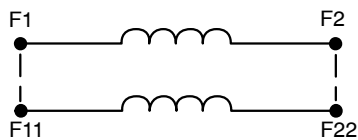


Slot Bar Marking: Results from a fault in the armature windings. The pattern relates to the number of conductors per slot.

This chart courtesy of Helwig Carbon Products, Inc., Milwaukee, WI

Section 4 Connection Diagrams

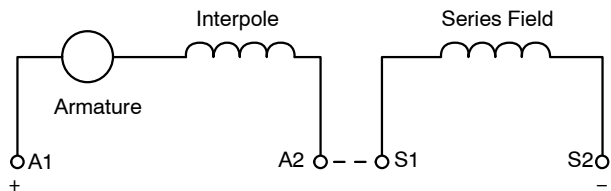
Low Voltage connection Shunt Field



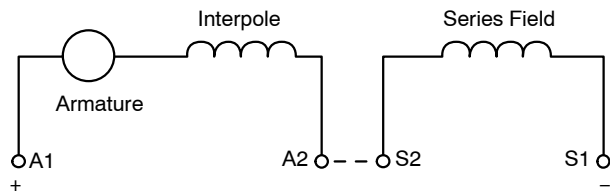
High Voltage connection Shunt Field



Reversing Series Motor

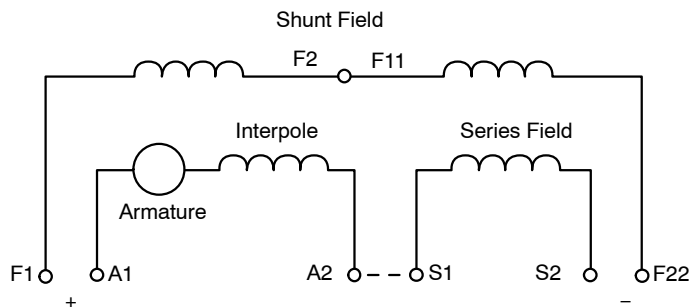


Series Motor CCW Rotation
(Facing Commutator End)

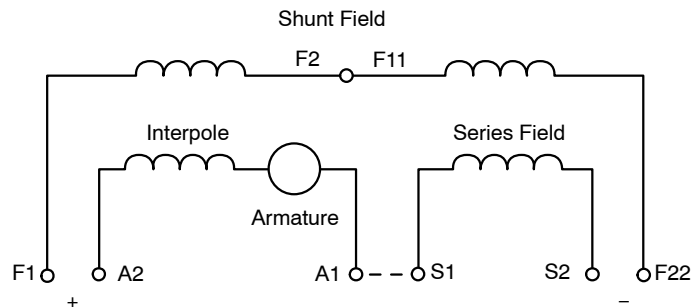


Series Motor CW Rotation
(Facing Commutator End)

Reversing Compound and Stabilized Motors

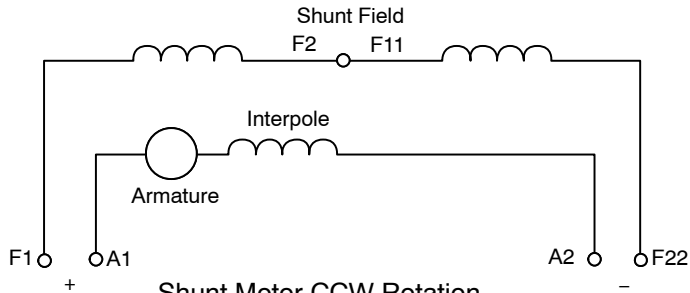


Compound or Stabilized Shunt Motor
CCW Rotation (Facing Commutator End)
High Voltage Field Connection



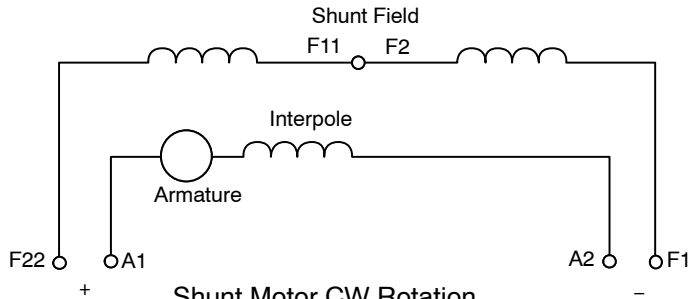
Compound or Stabilized Shunt Motor
CW Rotation (Facing Commutator End)
High Voltage Field Connection

Reversing Shunt Motor



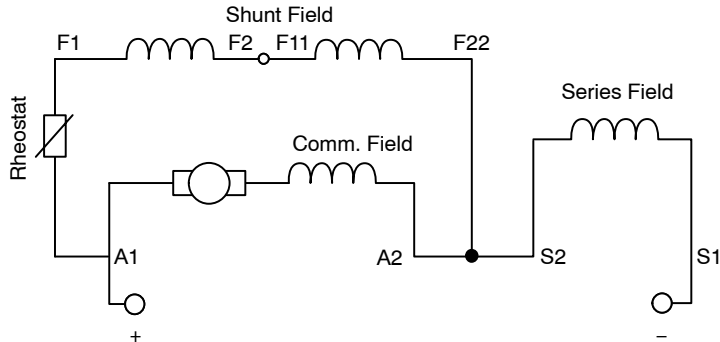
Shunt Motor CCW Rotation
(Facing Commutator End)
High Voltage Field Connection

Reversing Shunt Motor



Shunt Motor CW Rotation
(Facing Commutator End)
High Voltage Field Connection

**Self Excited DC Generator Connection Diagram
Compound Wound Short Shunt Connection**



CCW Rotation
(Facing Commutator End)
For CW Rotation, Interchange Leads A1 and A2.

Baldor District Offices

<p>UNITED STATES</p> <p>ARIZONA</p> <p>PHOENIX</p> <p>4211 S 43RD PLACE</p> <p>PHOENIX, AZ 85040</p> <p>PHONE: 602-470-0407</p> <p>FAX: 602-470-0464</p> <p>ARKANSAS</p> <p>CLARKSVILLE</p> <p>1001 COLLEGE AVE.</p> <p>CLARKSVILLE, AR 72830</p> <p>PHONE: 479-754-9108</p> <p>FAX: 479-754-9205</p> <p>CALIFORNIA</p> <p>LOS ANGELES</p> <p>6480 FLOTILLA</p> <p>COMMERCE, CA 90040</p> <p>PHONE: 323-724-6771</p> <p>FAX: 323-721-5859</p> <p>HAYWARD</p> <p>21056 FORBES STREET</p> <p>HAYWARD, CA 94545</p> <p>PHONE: 510-785-9900</p> <p>FAX: 510-785-9910</p> <p>COLORADO</p> <p>DENVER</p> <p>3855 FOREST STREET</p> <p>DENVER, CO 80207</p> <p>PHONE: 303-623-0127</p> <p>FAX: 303-595-3772</p> <p>CONNECTICUT</p> <p>WALLINGFORD</p> <p>65 SOUTH TURNPIKE ROAD</p> <p>WALLINGFORD, CT 06492</p> <p>PHONE: 203-269-1354</p> <p>FAX: 203-269-5485</p> <p>FLORIDA</p> <p>TAMPA/PUERTO RICO/</p> <p>VIRGIN ISLANDS</p> <p>3906 EAST 11TH AVENUE</p> <p>TAMPA, FL 33605</p> <p>PHONE: 813-248-5078</p> <p>FAX: 813-247-2984</p> <p>GEORGIA</p> <p>ATLANTA</p> <p>62 TECHNOLOGY DR.</p> <p>ALPHARETTA, GA 30005</p> <p>PHONE: 770-772-7000</p> <p>FAX: 770-772-7200</p> <p>ILLINOIS</p> <p>CHICAGO</p> <p>4 SAMMONS COURT</p> <p>BOLINGBROOK, IL 60440</p> <p>PHONE: 630-296-1400</p> <p>FAX: 630-226-9420</p> <p>INDIANA</p> <p>INDIANAPOLIS</p> <p>5525 W. MINNESOTA STREET</p> <p>INDIANAPOLIS, IN 46241</p> <p>PHONE: 317-246-5100</p> <p>FAX: 317-246-5110</p> <p>IOWA</p> <p>DES MOINES</p> <p>1800 DIXON STREET, SUITE C</p> <p>DES MOINES, IA 50316</p> <p>PHONE: 515-263-6929</p> <p>FAX: 515-263-6515</p> <p>MARYLAND</p> <p>BALTIMORE</p> <p>6660 SANTA BARBARA RD.</p> <p>SUITE 22-24</p> <p>ELKRIDGE, MD 21075</p> <p>PHONE: 410-579-2135</p> <p>FAX: 410-579-2677</p>	<p>MASSACHUSETTS</p> <p>BOSTON</p> <p>6 PULLMAN STREET</p> <p>WORCESTER, MA 01606</p> <p>PHONE: 508-854-0708</p> <p>FAX: 508-854-0291</p> <p>MICHIGAN</p> <p>DETROIT</p> <p>5993 PROGRESS DRIVE</p> <p>STERLING HEIGHTS, MI 48312</p> <p>PHONE: 586-978-9800</p> <p>FAX: 586-978-9969</p> <p>MINNESOTA</p> <p>MINNEAPOLIS</p> <p>21080 134TH AVE. NORTH</p> <p>ROGERS, MN 55374</p> <p>PHONE: 763-428-3633</p> <p>FAX: 763-428-4551</p> <p>MISSOURI</p> <p>ST LOUIS</p> <p>422 INDUSTRIAL DRIVE</p> <p>MARYLAND HEIGHTS, MO 63043</p> <p>PHONE: 314-298-1800</p> <p>FAX: 314-298-7660</p> <p>KANSAS CITY</p> <p>1501 BEDFORD AVENUE</p> <p>NORTH KANSAS CITY, MO 64116</p> <p>PHONE: 816-587-0272</p> <p>FAX: 816-587-3735</p> <p>NEW YORK</p> <p>AUBURN</p> <p>ONE ELLIS DRIVE</p> <p>AUBURN, NY 13021</p> <p>PHONE: 315-255-3403</p> <p>FAX: 315-253-9923</p> <p>NORTH CAROLINA</p> <p>GREENSBORO</p> <p>1220 ROTHERWOOD ROAD</p> <p>GREENSBORO, NC 27406</p> <p>PHONE: 336-272-6104</p> <p>FAX: 336-273-6628</p> <p>OHIO</p> <p>CINCINNATI</p> <p>2929 CRESCENTVILLE ROAD</p> <p>WEST CHESTER, OH 45069</p> <p>PHONE: 513-771-2600</p> <p>FAX: 513-772-2219</p> <p>CLEVELAND</p> <p>8929 FREEWAY DRIVE</p> <p>MACEDONIA, OH 44056</p> <p>PHONE: 330-468-4777</p> <p>FAX: 330-468-4778</p> <p>OKLAHOMA</p> <p>TULSA</p> <p>7170 S. BRADEN, SUITE 140</p> <p>TULSA, OK 74136</p> <p>PHONE: 918-366-9320</p> <p>FAX: 918-366-9338</p> <p>OREGON</p> <p>PORTLAND</p> <p>20393 SW AVERY COURT</p> <p>TUALATIN, OR 97062</p> <p>PHONE: 503-691-9010</p> <p>FAX: 503-691-9012</p> <p>PENNSYLVANIA</p> <p>PHILADELPHIA</p> <p>1035 THOMAS BUSCH</p> <p>MEMORIAL HIGHWAY</p> <p>PENNSAUKEN, NJ 08110</p> <p>PHONE: 856-661-1442</p> <p>FAX: 856-663-6363</p>	<p>PITTSBURGH</p> <p>159 PROMINENCE DRIVE</p> <p>NEW KENSINGTON, PA 15068</p> <p>PHONE: 724-889-0092</p> <p>FAX: 724-889-0094</p> <p>TENNESSEE</p> <p>MEMPHIS</p> <p>4000 WINCHESTER ROAD</p> <p>MEMPHIS, TN 38118</p> <p>PHONE: 901-365-2020</p> <p>FAX: 901-365-3914</p> <p>TEXAS</p> <p>DALLAS</p> <p>3040 QUEBEC</p> <p>DALLAS, TX 75247</p> <p>PHONE: 214-634-7271</p> <p>FAX: 214-634-8874</p> <p>HOUSTON</p> <p>4647 PINE TIMBERS</p> <p>SUITE # 135</p> <p>HOUSTON, TX 77041</p> <p>PHONE: 713-895-7062</p> <p>FAX: 713-690-4540</p> <p>UTAH</p> <p>SALT LAKE CITY</p> <p>2230 SOUTH MAIN STREET</p> <p>SALT LAKE CITY, UT 84115</p> <p>PHONE: 801-832-0127</p> <p>FAX: 801-832-8911</p> <p>WISCONSIN</p> <p>MILWAUKEE</p> <p>2725 SOUTH 163RD STREET</p> <p>NEW BERLIN, WI 53151</p> <p>PHONE: 262-784-5940</p> <p>FAX: 262-784-1215</p> <p>INTERNATIONAL SALES</p> <p>FORT SMITH, AR</p> <p>P.O. BOX 2400</p> <p>FORT SMITH, AR 72902</p> <p>PHONE: 479-646-4711</p> <p>FAX: 479-648-5895</p> <p>CANADA</p> <p>EDMONTON, ALBERTA</p> <p>4053-92 STREET</p> <p>EDMONTON, ALBERTA T6E 6R8</p> <p>PHONE: 780-434-4900</p> <p>FAX: 780-438-2600</p> <p>TORONTO</p> <p>OAKVILLE, ONTARIO</p> <p>2750 COVENTRY ROAD</p> <p>OAKVILLE, ONTARIO L6H 6R1</p> <p>PHONE: 905-829-3301</p> <p>FAX: 905-829-3302</p> <p>MONTREAL, QUEBEC</p> <p>5155, J.A. BOMBARDIER</p> <p>ST-HUBERT (QUÉBEC) CANADA</p> <p>J3Z 1G4</p> <p>PHONE: 514-933-2711</p> <p>FAX: 514-933-8639</p> <p>VANCOUVER,</p> <p>BRITISH COLUMBIA</p> <p>1538 KEBET WAY</p> <p>PORT COQUITLAM,</p> <p>BRITISH COLUMBIA V3C 5M5</p> <p>PHONE: 604-421-2822</p> <p>FAX: 604-421-3113</p>	<p>WINNIPEG, MANITOBA</p> <p>54 PRINCESS STREET</p> <p>WINNIPEG, MANITOBA R3B 1K2</p> <p>PHONE: 204-942-5205</p> <p>FAX: 204-956-4251</p> <p>AUSTRALIA</p> <p>UNIT 3, 6 STANTON ROAD</p> <p>SEVEN HILLS, NSW 2147,</p> <p>AUSTRALIA</p> <p>PHONE: (61) (2) 9674 5455</p> <p>FAX: (61) (2) 9674 2495</p> <p>UNIT 8, 5 KELLETTS ROAD</p> <p>ROWVILLE, VICTORIA, 3178</p> <p>AUSTRALIA</p> <p>PHONE: (61) (3) 9753 4355</p> <p>FAX: (61) (3) 9753 4366</p> <p>EL SALVADOR</p> <p>RESIDENCIAL PINARES DE SUIZA</p> <p>POL. 15 #44,</p> <p>NVA. SAN SALVADOR,</p> <p>EL SALVADOR</p> <p>PHONE: +503 2288-1519</p> <p>FAX: +503 2288-1518</p> <p>CHILE</p> <p>LUIS THAYER OJEDA 166,</p> <p>OF 402 - PROVIDENCIA</p> <p>SANTIAGO, CHILE</p> <p>PHONE: +56 2 816 9900</p> <p>CHINA</p> <p>160 SONG SHENG ROAD</p> <p>SONGJIANG INDUSTRY ZONE</p> <p>SHANGHAI 201613, CHINA</p> <p>PHONE: +86 21 5760 5335</p> <p>FAX: +86 21 5760 5336</p> <p>GERMANY</p> <p>DIESELSTRASSE 22</p> <p>D-85551 KIRCHHEIM</p> <p>MUNICH, GERMANY</p> <p>PHONE: +49 89 90 5080</p> <p>FAX: +49 89 90 50 8492</p> <p>INDIA</p> <p>14, COMMERCE AVENUE</p> <p>MAHAGANESH COLONY</p> <p>PAUD ROAD</p> <p>PUNE - 411038</p> <p>MAHARASHTRA, INDIA</p> <p>PHONE: +91 20 25 45 27 17 / 18</p> <p>FAX: +91 20 25 45 27 19</p> <p>ITALY</p> <p>BALDOR ASR AG</p> <p>SUCCURSALE DI MENDRISIO</p> <p>VIA BORROMINI, 20A</p> <p>CH-6850 MENDRISIO</p> <p>SWITZERLAND</p> <p>PHONE: 0041 91 640 99 50</p> <p>FAX: 0041 91 630 26 33</p> <p>JAPAN</p> <p>DIA BLDG 802,</p> <p>2-21-1 TSURUYA-CHO,</p> <p>KANAGAWA-KU</p> <p>YOKOHAMA, 221-0835, JAPAN</p> <p>PHONE: 81-45-412-4506</p> <p>FAX: 81-45-412-4507</p>	<p>MEXICO</p> <p>LEON, GUANAJUATO</p> <p>KM. 2.0 BLVD. AEROPUERTO</p> <p>LEON 37545, GUANAJUATO,</p> <p>MEXICO</p> <p>PHONE: +52 477 761 2030</p> <p>FAX: +52 477 761 2010</p> <p>MIDDLE EAST & NORTH AFRICA</p> <p>VSE INTERNATIONAL CORP.</p> <p>P. O. BOX 5618</p> <p>BUFFALO GROVE, IL 60089-5618</p> <p>PHONE: 847 590 5547</p> <p>FAX: 847 590 5587</p> <p>PANAMA</p> <p>AVE. RICARDO J. ALFARO</p> <p>EDIFICIO SUN TOWERS MALL</p> <p>PISO 2, LOCAL 55</p> <p>CIUDAD DE PANAMÁ, PANAMÁ</p> <p>PHONE: +507 236-5155</p> <p>FAX: +507 236-0591</p> <p>SINGAPORE</p> <p>18 KAKI BUKIT ROAD 3, #03-09</p> <p>ENTREPRENEUR BUSINESS</p> <p>CENTRE</p> <p>SINGAPORE 415978</p> <p>PHONE: (65) 6744 2572</p> <p>FAX: (65) 6747 1708</p> <p>SWITZERLAND</p> <p>POSTFACH 73</p> <p>SCHUTZENSTRASSE 59</p> <p>CH-8245 FEUERTHALEN</p> <p>SWITZERLAND</p> <p>PHONE: +41 52 647 4700</p> <p>FAX: +41 52 659 2394</p> <p>TAIWAN</p> <p>1F, NO. 126 WENSHAN 3RD</p> <p>STREET,</p> <p>NANTUN DISTRICT,</p> <p>TAICHUNG CITY 408</p> <p>TAIWAN R.O.C</p> <p>PHONE: (886) 4 238 04235</p> <p>FAX: (886) 4 238 04463</p> <p>UNITED KINGDOM</p> <p>6 BRISTOL DISTRIBUTION PARK</p> <p>HAWKLEY DRIVE</p> <p>BRISTOL BS32 0BF U.K.</p> <p>PHONE: +44 1454 850000</p> <p>FAX: +44 1454 859001</p> <p>VENEZUELA</p> <p>AV. ROMA. QTA EL MILAGRO. URB.</p> <p>CALIFORNIA NORTE</p> <p>CARACAS, 1070</p> <p>VENEZUELA</p> <p>PHONE/FAX: +58 212 272 7343</p> <p>MOBILE: +58 414 114 8623</p>
---	--	--	---	---



* 6 0 1 - 0 4 0 9 *



BALDOR ELECTRIC COMPANY
World Headquarters
P.O. Box 2400 Fort Smith, AR 72901-2400
(479) 646-4711 Fax (479) 648-5792
www.baldor.com