

Miniature circuit-breakers

Selection table



Series		S 200	S 200 M	S 200 M UC	S 200 P			S 300 P				S 200 MR	S 200 S		
Characteristics		B,C,D, K,Z	B,C,D, K,Z	B,C, K, Z	B,C,D, K,Z	B,C,D, K,Z	B,C,D, K,Z	B,C,D, K,Z	B,C,D, K,Z	B,C,D, K,Z	B,C,D, K,Z	K	B,C		
Rated current [A]		0.5 ≤ In ≤ 63	0.5 ≤ In ≤ 63	0.2 ≤ In ≤ 63	0.2 ≤ In ≤ 25	32 ≤ In ≤ 40	50 ≤ In ≤ 63	0.2 ≤ In ≤ 6	8 ≤ In ≤ 25	32 ≤ In ≤ 40	50 ≤ In ≤ 63	0.2 ≤ In ≤ 63	6 ≤ In ≤ 20		
Reference standard	Nr. poles	Ue[V]													
IEC/EN 60898	Icn	230/400	6	10	10	25	15	15					6		
		240/415							25	25	20	15			
IEC/EN 60947-2 Alternating current	Icu 1, 1P+N	133	20	25		40	25	25							
		139							100	50	40	40			
	2, 3, 4	230	10	15		25	15	15		100	25	25	25	15	
		240								100	25	25	25		
		253													
		230	20	25	10 ^{*17/6} ^{*18}	40	25	25							
		240							100	50	40	40			
		400	10	15		25	15	15						15	
	2, 3, 4	415							100	25	25	25			
		440	10	15	10 ^{*17/6} ^{*18}				100	15	15	15			
	IEC/EN 60947-2 Direct current T=I/R≤5ms for all series, except S280 UC and S800S-UC, where T=I/R<15ms	Ics 1, 1P+N	133	15	18.7 ^{*8}		20	18.7	18.7						
			139							100	20	20	20		
		2, 3, 4	230	7.5	11.2 ^{*8}		12.5	11.2	7.5		100	12.5	10	7.5	
			240								100	12.5	10	7.5	
253					7.5 ^{*17/6} ^{*18}									7.5 ^{*18/11.2} ^{*17}	
230			15	18.7 ^{*8}		20	18.7	18.7							
240									100	20	20	20			
400			7.5	11.2 ^{*8}		12.5	11.2	7.5							
2, 3, 4		415							100	12.5	10	7.5			
		440	7.5	11.2 ^{*8}	7.5 ^{*17/6} ^{*18}				100	7.5	7.5	7.5		7.5 ^{*18/11.2} ^{*17}	
IEC/EN 60947-2 Direct current T=I/R≤5ms for all series, except S280 UC and S800S-UC, where T=I/R<15ms		Icu 1, 1P+N	24	20											
			60	10	10		15	10	10						
		2	72							25	25	25	25		
			125			10									
	220														
	250														
	440				10										
	500														
	3,4	48	20												
		125	10	10		15	10	10	25	25	25	25			
		250													
		440			10										
		500													
		800													
3,4	375														
	500														
	750														
	1200														

¹ only up to 40 A; 10 kA up to 50/63 A
² only for "D" characteristic
³ values are not for all rated currents
⁴ 600 V DC for 100, 125 A
⁵ 1000 V DC for 100, 125 A
⁶ 3 poles
⁷ 4 poles

⁸ max. values. Detailed values on page 2/12
⁹ relevant product standard: E DIN VDE 0645 (based on IEC/EN 60898-1 and IEC/EN 60947-2)
¹⁰ by 250 V DC 1-pole, 600 V 3- and 4-pole
¹¹ by 600 V DC 2-pole
¹² ≤ 25 A
¹³ > 25 A

¹⁴ char. B, C
¹⁵ only 2 poles (connection in series)
¹⁶ UL 1077 only
¹⁷ ≤ 40 A
¹⁸ > 40 A
¹⁹ ≤ 35 A
²⁰ 10-80 A

Miniature circuit-breakers

Selection table



Series		S 200	S 200 M	S 200 M UC	S 200 P			S 300 P			S 200 MR	S 200 S	
Characteristics		B,C,D, K,Z	B,C,D, K,Z	B,C, K, Z	B,C,D, K,Z	B,C,D, K,Z	B,C,D, K,Z	B,C,D, K,Z	B,C,D, K,Z	B,C,D, K,Z	K	B,C	
Rated current [A]		0.5 ≤ In ≤ 63	0.5 ≤ In ≤ 63	0.2 ≤ In ≤ 63	0.2 ≤ In ≤ 25	32 ≤ In ≤ 40	50 ≤ In ≤ 63	0.2 ≤ In ≤ 25	32 ≤ In ≤ 40	50 ≤ In ≤ 63	0.2 ≤ In ≤ 63	6 ≤ In ≤ 20	
IEC/EN 60947-2 Direct current T=I/R≤5ms for all series, except S280 UC and S800S-UC, where T=I/R<15ms	lcs 1, 1P+N	24	20										
		60	10	10		15	10	10					
		72							12.5	10	7.5		
		125											
		220			10								
	2	250											
		48	20										
		125	10	10		15	10	10	12.5	10	7.5		
		250											
		440			10								
	3,4	500											
		800											
375													
500													
UL 1077/ C22.2 No 235 Alternating current	Int. 1, 1P+N	120	10 ^{*16}		10	10	10	10	10	10			
		240				10	10	10	10	10			
	2, 3, 4	277	6 ^{*16}	6	6	10	10	10	10	10	10	10	
		240	10 ^{*16}			10	10	10	10	10	10		
		480 Y/277	6 ^{*16}	6	6	10	6	6	10	10	10		
UL 1077/ C22.2 No 235 Direct current	Int. 1, 1P+N	60	10 ^{*16}	10				10	10	10			
		125											
	2, 3, 4	250			10								
		125		10					10	10	10		
		250											
UL 489/ C22.2 No 5 Alternating current	Int. 1, 1P+N	240											
		277											
	2, 3, 4	240											
		480 Y/277											
UL 489/ C22.2 No 5 Direct current	Int. 1, 1P+N	48											
		60											
	2	125											
		96											
		125											
250													

^{*1} only up to 40 A; 10 kA up to 50/63 A

^{*2} only for "D" characteristic

^{*3} values are not for all rated currents

^{*4} 600 V DC for 100, 125 A

^{*5} 1000 V DC for 100, 125 A

^{*6} 3 poles

^{*7} 4 poles

^{*8} max. values. Detailed values on page 2/12

^{*9} relevant product standard: E DIN VDE 0645 (based on IEC/EN 60898-1 and IEC/EN 60947-2)

^{*10} by 250 V DC 1-pole, 600 V 3- and 4-pole

^{*11} by 600 V DC 2-pole

^{*12} ≤ 25 A

^{*13} > 25 A

^{*14} char. B, C

^{*15} only 2 poles (connection in series)

^{*16} UL 1077 only

^{*17} ≤ 40 A

^{*18} > 40 A

^{*19} ≤ 35 A

^{*20} 10-80 A

Miniature circuit-breakers

Selection table



		SU 200 M		SU 200 MR	S 200 UDC	S200CT	SN 201 L	S200CL	SN 201	S200C	SN 201 M	S200CM	S200 80-100A
	C,Z	K	C,Z	K	K,Z	C	B,C	B,C	B,C,D	B,C	B,C	B,C	B,C
	$0.2 \leq I_n \leq 40$	$0.2 \leq I_n \leq 35$	$50 \leq I_n \leq 63$	$40 \leq I_n \leq 63$	$0.2 \leq I_n \leq 63$	$1 \leq I_n \leq 63$	$2 \leq I_n \leq 40$	$2 \leq I_n \leq 40$	$2 \leq I_n \leq 40$	$2 \leq I_n \leq 40$	$2 \leq I_n \leq 40$	$2 \leq I_n \leq 40$	$80 \leq I_n \leq 100$
	15	15	10	10									
	15	15	10	10									
			10	10	10								
	10	10			10 *19								
			10	10	10								
	10	10			10 *19								
	10	10	10	10		14							
						14 *17							
	10	10	10	10		14 *15							
						14 *15 *17							

High performance circuit-breakers

Selection table



Series	S 750 DR			S 800S			S 800N	S 800C
Characteristics	E selective, K selective	B,C,D	K	KM	UCB	UCK	B,C,D	B,C,D,K
Rated current [A]	16 ≤ In ≤ 100	0.5 ≤ In ≤ 125	0.5 ≤ In ≤ 125	20 ≤ In ≤ 80	0.5 ≤ In ≤ 125	0.5 ≤ In ≤ 125	6 ≤ In ≤ 125	10 ≤ In ≤ 125
Breaking capacity [kA]								
Reference standard	Nr. poles	Ue[V]						
IEC/EN 60898	Icn	230/400	25 *20				20 *20	15 *23
IEC/EN 60947-2	Icu 1, 1P+N	133 230	25					
Alternating current	240		50	50	50 *6		36	25
	253							
	254		30	30	30 *6		20	15
	289		15 (up to 80 A) 10 (100...125 A)	15 (up to 80 A) 10 (100...125 A)			10	
	400		6 (up to 80 A) 4.5 (100...125 A)	6 (up to 80 A) 4.5 (100...125 A)	6 *6		4.5	
	580							
	2, 3, 4	230						
	400	25						
	415		50	50	50 *6		36	25
	440		30	30	30 *6		20	15
	500		15 (up to 80 A) 10 (100...125 A)	15 (up to 80 A) 10 (100...125 A)				
	580						10	
	690		6 (up to 80 A) 4.5 (100...125 A)	6 (up to 80 A) 4.5 (100...125 A)			4.5	
	1000							
	Ics 1, 1P+N	133 230	12.5					
240		40	40			30	18	
253								
254		22.5 (up to 80 A) 15 (100...125 A)	22.5 (up to 80 A) 15 (100...125 A)	22.5		15 (up to 80 A) 10 (100...125 A)	10	
289		11 (up to 80 A) 5 (100...125 A)	11 (up to 80 A) 5 (100...125 A)			8 (up to 80 A) 5 (100...125 A)		
400		4 (up to 80 A) 3 (100 ... 125 A)	4 (up to 80 A) 3 (100 ... 125 A)	4		3		
580								
2, 3, 4	230							
400	12.5	40	40					
415				40 *6		30	18	
440		22.5 (up to 80 A) 15 (100 ... 125 A)	22.5 (up to 80 A) 15 (100 ... 125 A)				15	
500		11 (up to 80 A) 5 (100...125 A)				8 (up to 80 A) 5 (100...125 A)		
690		4 *3	4 *3	4		3		
1000								

*1 only up to 40 A; 10 kA up to 50/63 A

*2 only for "D" characteristic

*3 values are not for all rated currents

*5 1500 V DC for 4P

*6 3 poles

*7 4 poles

*8 max. values. Detailed

values on page 2/12

*9 relevant product standard: E
DIN VDE 0645 (based on IEC/EN
60898-1 and IEC/EN 60947-2)*10 by 250 V DC 1-pole, 600
V 3- and 4-pole

*11 by 600 V DC 2-pole

*12 ≤ 25 A

High performance circuit-breakers

Selection table



	S800B	S800HV	S800U	S804U-UCZ	S804U-PVS	S800PV-SP
	B, C, D, K	C, K	Z, K	UCZ	PVS	PV-SP
	$32 \leq I_n \leq 125$	C: $10 \leq I_n \leq 32$ K: $0.5 \leq I_n \leq 125$	$10 \leq I_n \leq 100$	10-80	5	$5 \leq I_n \leq 125$
	10 * ²³					
	16		30			
		1.5 (0.5 ... 5 A), 4 (6 ... 63 A) 3 (80 ... 125 A)				
	16		50			
		1.5 (0.5 ... 5 A) 4 (6 ... 63 A) 3 (80 ... 125 A)				
	10		25			
		1.5 (0.5 ... 5 A) 2.5 (6 ... 63 A) 2 (80 ... 125 A)				
	10		40			
		1.5 (0.5 ... 5 A) 2.5 (6 ... 63 A) 2 (80 ... 125 A)				

*¹³ > 25 A*¹⁴ char. B, C*¹⁵ only 2 poles (connection in series)*¹⁶ UL 1077 only*¹⁷ ≤ 40 A*¹⁸ > 40 A*¹⁹ ≤ 35 A*²⁰ 10-80 A*²¹ for S804U-UCZ only*²² for S804U-PVS only*²³ D125 only IEC/EN60947-2

High performance circuit-breakers

Selection table



	S800B	S800HV	S800U	S804U-UCZ	S804U-PVS	S800PV-SP
	B, C, D, K	C, K	Z, K	UCZ	PVS	PV-SP
	$32 \leq I_n \leq 125$	C: $10 \leq I_n \leq 32$ K: $0.5 \leq I_n \leq 125$	$10 \leq I_n \leq 100$	10-80	5	$5 \leq I_n \leq 125$
	10					
						5
	10^{*6} 10^{*7}					
						5^{*5}

High performance circuit-breakers

Selection table



Series		S 750 DR			S 800 S		S 800 N	S 800 C	
Characteristics		E selective, K selective	B, C, D	K	KM	UCB	UCK	B, C, D	B, C, D, K
Rated current [A]		16 ≤ In ≤ 100	0.5 ≤ In ≤ 125	0.5 ≤ In ≤ 125	20 ≤ In ≤ 80	0.5 ≤ In ≤ 125	0.5 ≤ In ≤ 125	6 ≤ In ≤ 125	10 ≤ In ≤ 125
IEC/EN 60947-2 Direct current T=I/R≤5ms for all series, except S280 UC and S800S-UC, where T=I/R<15ms	Ics 1, 24 1P+N 60								
	2	125	30	30				20	10
		220					50	50	
	3,4	250							
		48							
	500	125							
		250	30	30				20	10
	800	440					50	50	
		500							
1200	375	30 ^{*6}	30 ^{*6}	30 ^{*6}			20 ^{*6}	10 ^{*6}	
	500	30 ^{*7}	30 ^{*7}				20 ^{*7}	10 ^{*7}	
	750					50 ^{*6} 50 (63 ... 125 A) ^{*7} 50 (10 ... 50 A) ^{*7}	50 ^{*6} 50 (63 ... 125 A) ^{*7} 50 (10 ... 50 A) ^{*7}		
UL 1077/ C22.2 No 235 Alternating current	Int. 1, 120 cap. 1P+N 240		30 (0.5...63 A)	30 (0.5...63 A)				20 (≤ 100 A)	
			14 (0.5...63 A)	14 (0.5...63 A)					
	2, 3, 4	277	6 (0.5...63 A)	6 (0.5...63 A)				10 (≤ 100 A)	
		347							
	600Y/347	240							
		480 Y/277	14 (0.5... 63 A) ^{*27}	14 (0.5... 63 A) ^{*27}				10 (≤ 100 A)	
	600Y/347	6 (0.5...63 A)	6 (0.5...63 A)						
UL 1077/ C22.2 No 235 Direct current	Int. 1, 60 cap. 1P+N 125							10 (≤ 100 A)	
	2, 3, 4	250							
		125						10 (2P, ≤ 100 A)	
	250							10 (3P, ≤ 100 A)	
375							10 (4P, ≤ 100 A)		
500									
UL 489/ C22.2 No 5 Alternating current	Int. 1, 240 cap. 2, 3, 4 240	240							
		480 Y/277							
UL 489/ C22.2 No 5 Direct current	Int. 1, 60 cap. 2 125								
UL489B Direct current	4 600								
	4 1000								

^{*1} only up to 40 A; 10 kA up to 50/63 A

^{*2} only for "D" characteristic

^{*3} values are not for all rated currents

^{*5} 1500 V DC for 4P

^{*6} 3 poles

^{*7} 4 poles

^{*8} max. values. Detailed values on page 2/12

^{*9} relevant product standard:

E DIN VDE 0645 (based on IEC/EN 60898-1 and IEC/EN 60947-2)

^{*10} by 250 V DC 1-pole, 600 V

3- and 4-pole

^{*11} by 600 V DC 2-pole

^{*12} ≤ 25 A

High performance circuit-breakers

Selection table



S800B	S800HV	S800U	S804U-UCZ	S804U-PVS	S800PV-SP
B, C, D, K	C, K	Z, K	UCZ	PVS	PV-SP
32 ≤ In ≤ 125	C: 10 ≤ In ≤ 32 K: 6 ≤ In ≤ 125	10 ≤ In ≤ 100	10-80	5	5 ≤ In ≤ 125
					5
					5 *5
	15 (3P, 10 ... 32 A) *28				
		30			
		50			
			10		
				3	

*13 > 25 A
 *15 only 2 poles (connection in series)
 *16 UL 1077 only
 *17 ≤ 40 A

*18 > 40 A
 *19 ≤ 35 A
 *20 10-80 A
 *23 by 75V DC 1-pole

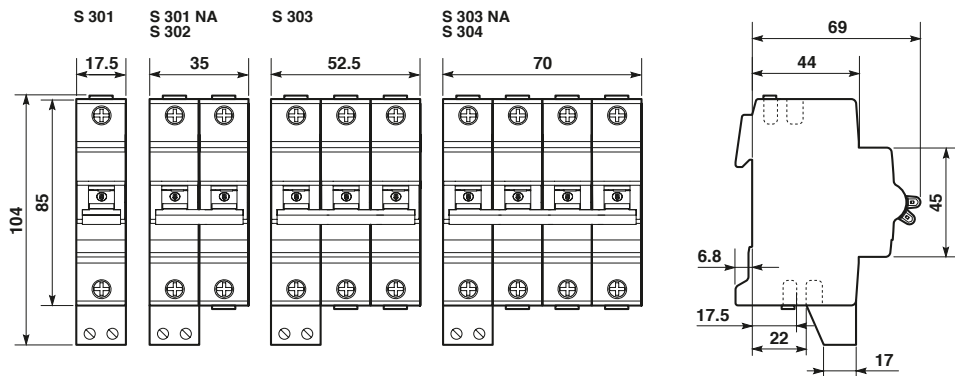
*24 by 150V DC 2-pole
 *25 by 225V DC 3-pole
 *26 by 300V DC 4-pole
 *27 certification 50A ongoing

*28 3P, 10 ... 32 A - only valid with XT2L 125 TMF 35-400

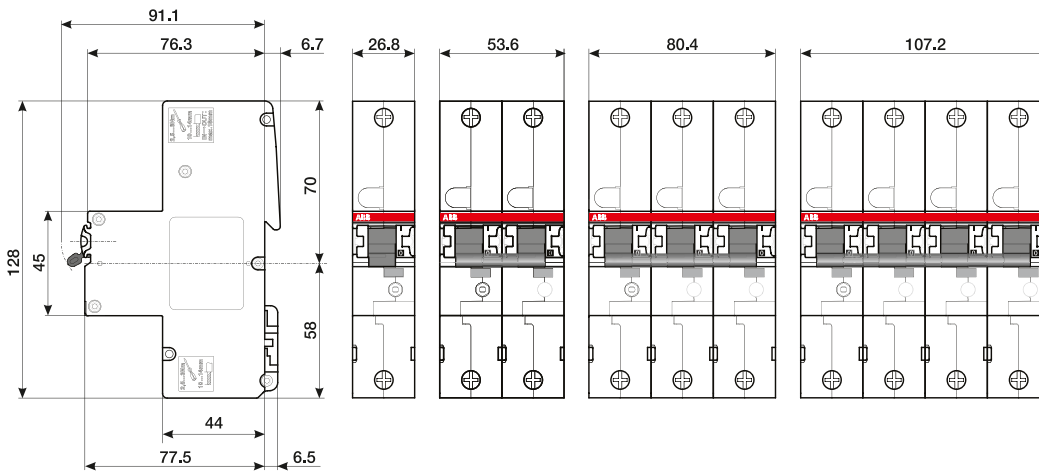
Quick product references

Overall dimensions

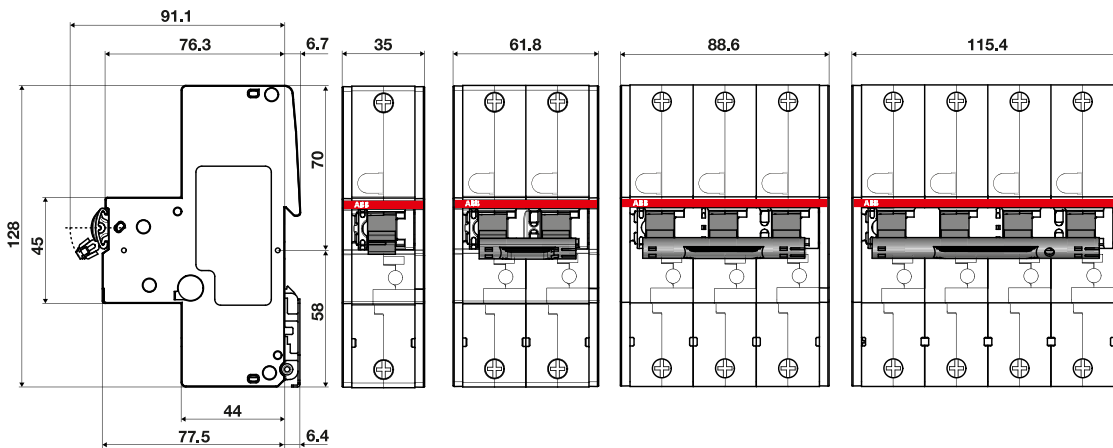
S 200/S 300 with bottom-fitting auxiliary contact



S 750 DR 16...63A



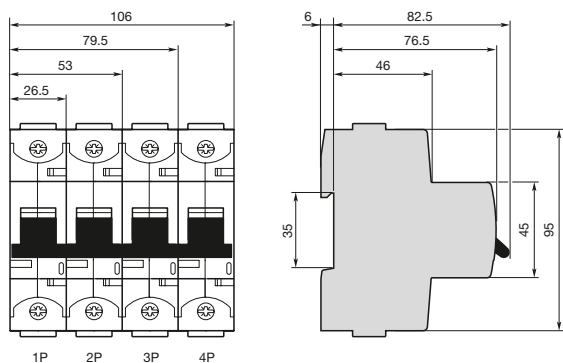
S 750 DR 80...100A



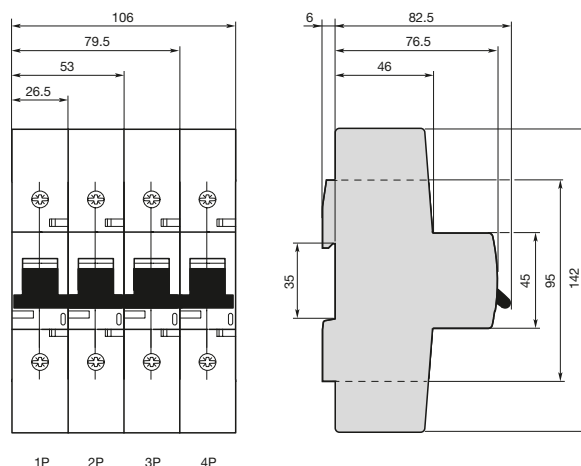
Quick product references

Overall dimensions

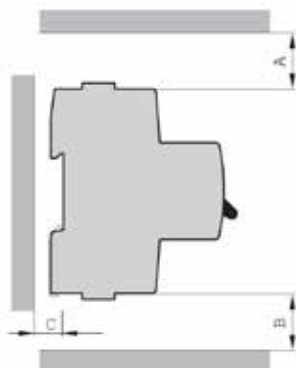
S800S, S800N, S800C, S800B, S800U, S800PV-SP, S800PV-SD



S800 with Ringlug terminals



S800 mounting distances



S800S, S800N, S800C

up to 254/440 VAC or 500VDC

S800S-UC

up to 1000 VDC

S800S-SCL-SR

up to 400/690 VAC

Dimensions	isolated parts/surfaces	not isolated parts/surfaces
A	25	100
B	25	25
C	7	50

S800S, S800N, S800C, S800HV

from 254/440 VAC up to 400/690 VAC or 588/1000 VAC (S800HV)

S800B

up to 230/400 VAC or 300 VDC

S800PV-SP

up to 1500 VDC

Dimensions	isolated parts/surfaces	not isolated parts/surfaces
A	25	50
B	25	25
C	7	50

S800HV-SCL-SR

up to 580/1000 Vac

Dimensions	isolated parts/surfaces	not isolated parts/surfaces
A	25	150
B	25	25
C	7	50

S800P

Technical data



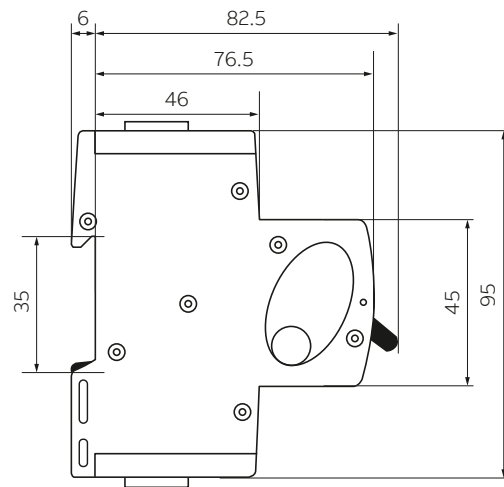
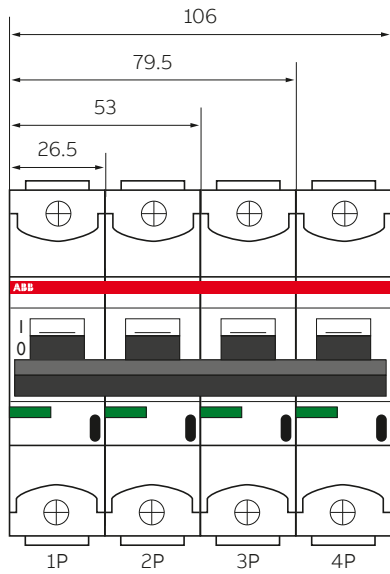
S800P

		S800P	
Performance	Tripping characteristics	B, C, D, K	
	Standards	IEC/EN 60947-2	
	Poles	1, 2, 3, 4	
	Rated current I _n	80 ... 125 A	
	Rated frequency f	50/60 Hz	
	Rated insulation voltage U _i acc. to IEC/EN 60664-1 (V)	AC 690 V	
	Rated impulse withstand voltage U _{imp} . (1.2/50 μs)	6 kV	
	Overvoltage category	III	
	Pollution degree	3	
	Suitability for isolation	Yes	
Data acc. to IEC/EN 60947-2	Rated operational voltage U _e	AC 400/690 V DC 125 V (1-pole) DC 250 V (2-pole) DC 375 V (3-pole) DC 500 V (4-pole)	
	Min. operating voltage	AC 12 V	
	Rated ultimate short-circuit capacity I _{cu}	AC 240/415 V = 50 kA AC 254/440 V = 30 kA AC 289/500 V = 15 kA (80 A) AC 289/500 V = 10 kA (100...125 A) AC 400/690 V = 6 kA (80 A) AC 400/690 V = 4.5 kA (100...125 A) DC 125 V (1-pole) = 30 kA DC 250 V (2-pole) = 30 kA DC 375 V (3-pole) = 30 kA DC 500 V (4-pole) = 30 kA	
	Rated service short-circuit capacity I _{cs}	AC 240/415 V = 40 kA	
	Reference temperature for tripping characteristics	30°C (Char. B, C, D) 40°C (Char. K)	
	Electrical and Mechanical Endurance	80...100 A: 6000 electrical ops / 10000 mechanical ops 125 A: 4000 electrical ops / 8000 mechanical ops	
	Data acc. to IEC/EN 60898-1	Rated short-circuit capacity I _{cn}	Char. B, C, D: AC 230/400 V = 25 kA (80 A) AC 230/400 V = 15 kA (100...125 A)

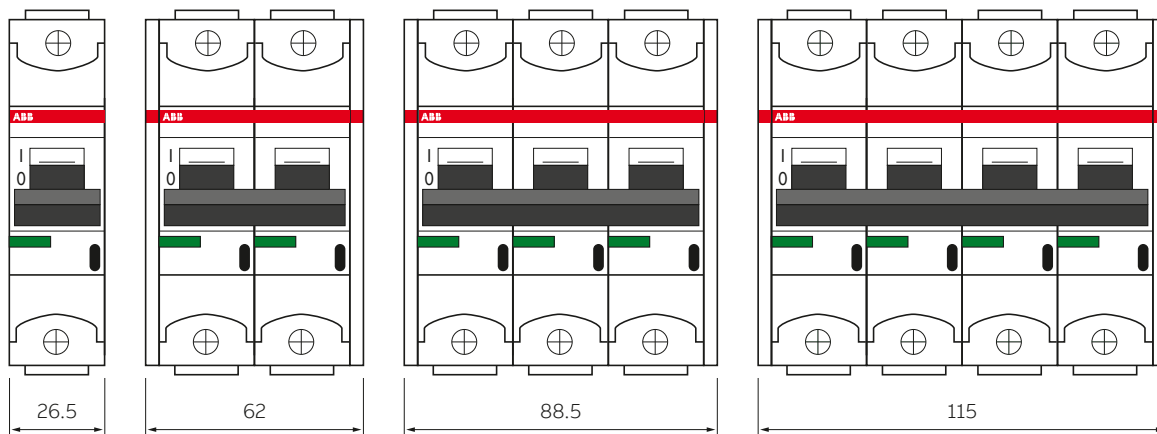
S800P

Dimension diagrams

S800P cage terminal versions



For S800P 80-100A



For S800P 125A