
FUNCTIONAL OVERVIEW

Cergo - Operator Desk System

Complete offering



Cergo model B5 with motorized base, dual monitor holders, light unit, sideboards, and noise dampening back panels.

Solid, ergonomic, and configurable.

Built to last

Built to last in the toughest 24/7 environments with a solid base, and, a thick high pressure laminate worktop. Stable and powerful motorization available on all models.

Accessories for every need

With the wide range of accessories you'll find solutions to store computers or personal effects, arrange monitors, reduce noise, increase desk area, integrate non-glare light and personal sound system along with other technical equipment. In the end your customized desk will give you a space efficient solution, easy to clean and maintain.

A model for any design

The CERGO desk system comes in a wide range of sizes and shapes. The solid base allows great flexibility, and heavy equipment to be mounted as a part of the desk. The desk system is useable for customized designs and for facilitating special equipment.

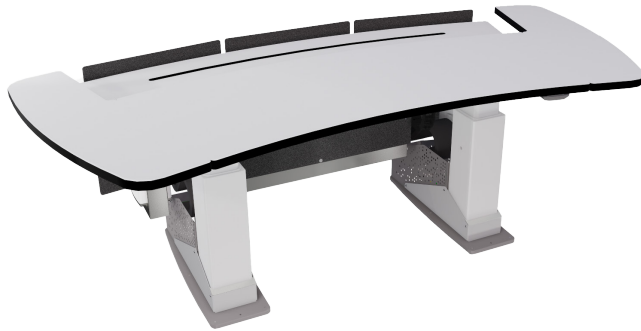
Design made easy

We have made all models available in CAD and Sketchup models for ease of use when designing your interior. We can also assist in creating your next collaborative environment. Please contact us for support.

Customize your desk for optimal performance

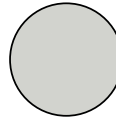
- Adjustable light, always centered above workplace
- Monitor holder for best alignment of monitors
- Shelf that keeps computers off the floor and reduce cabling problems with height adjustment
- Protective back panels in noise reducing material
- Motorized height adjustment of the desk and monitor board is a part of the standard offer. Non Motorized versions are also available.

For details on available accessories, see the [Cergo Accessories Overview](#).



Standard desk models

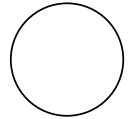
- 4 programmable settings available
- Standard desk models:
 - With optional motorized base 100-240V 50-60Hz Work board: max load 400kg (depending on equipment level)
 - Monitor board: max load 250kg (depending on equipment level)
- Frame and columns in silver RAL 9006
- Level adjustable feet in grey RAL 7015
- Cableport for additional cabling
- High pressure laminate top board:



Formica 7927
Folkstone Light Gray



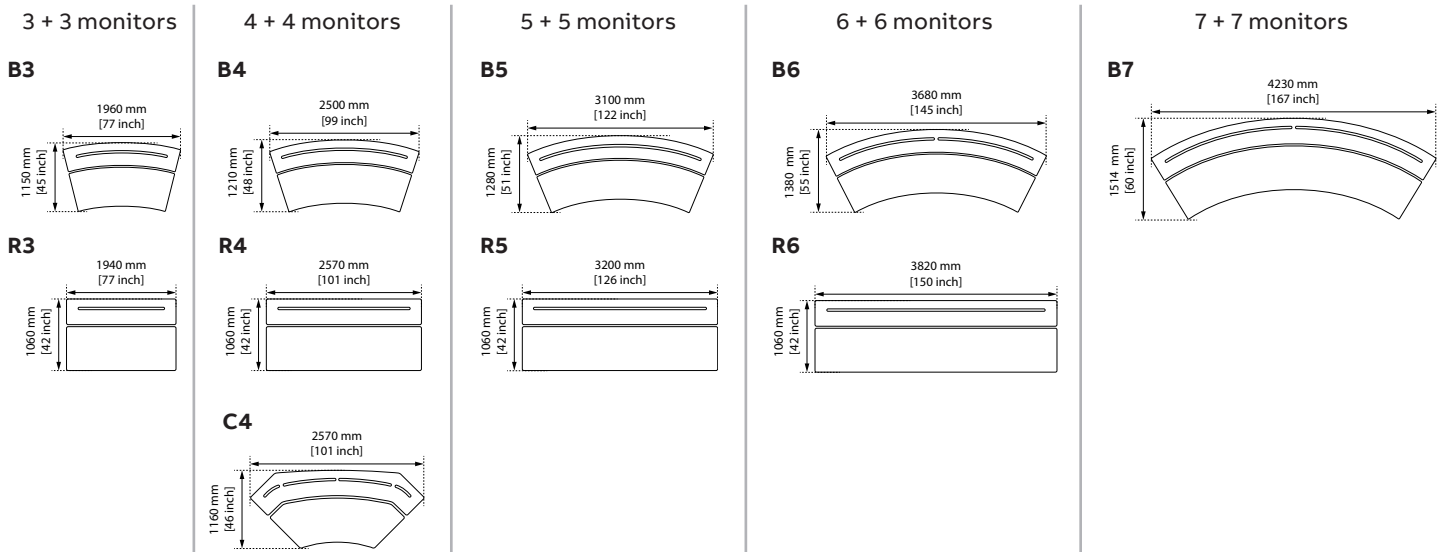
Formica 7921
Birch



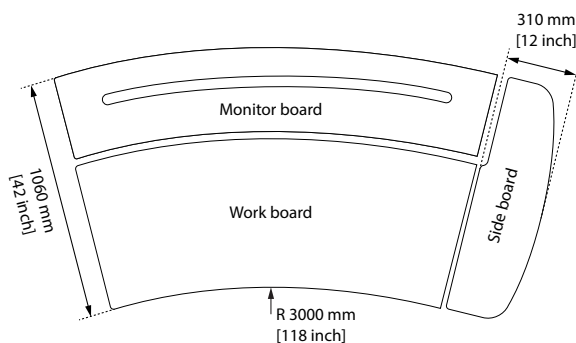
Other colors or
specifications are
available on request

Sizes

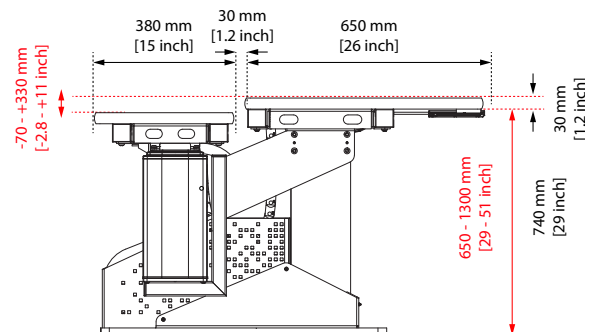
Monitors sizes based on 560 mm wide monitors. All versions can be equipped with single and dual rows as show below. (First row + Second row).



Details



Sideboard available for left and right side on all models.



Optional: Motorized work board enables height adjustments from 650 to 1300 mm. Motorized monitor board enable 330 mm lift from base position, 70 mm below work board.

