



WELCOME IP

Door entry systems

Connecting to a smarter life of door entry communication.



Welcome IP provides a door entry system for a comfortable life and smarter choice, regardless of size and distance.

The connectivity provides a solution in commercial, public and residential buildings.

Table of contents

004–005

Benefits

SYSTEMS

008–011

ABB-Welcome IP

MANAGEMENT

014–017

IP touch

018–019

App & Cloud

020–023

Property Management

024–025

IP Guard

026–033

Applications

034–051

Catalog

Ease of mind with modular systems

Full control at your fingertips



Comfort

ABB always takes pride in user experience and innovates common network technology to create a totally smarter solution that can perfectly meet your every need. We believe comfort, smart living and working are the original of comfort life.

Comforting to see

Minimalistic, aesthetic design with high-end material for both outdoors and indoors, the big screen with high resolution images and videos that please your eyes.

Comfort to listen

Full-duplex voice transmission allows a maximum of voice quality. Default and customizable ringtones are supported for better recognition.

Comforting to feel

The available app enables full remote control, status review and event notification at home or away. When technology overcomes distance, the feeling of home and building is pure pleasure.

Comforting to control

The integrated panel enables local control of door communication, access control and Building Automation and more.



Security

To make you safer and enjoy your own time, ABB combines all the security functions that keep you all day long with peace of mind. With powerful anti-hacker technology installed, there is no need to worry about cyber security issues.

Security from duplication prevention

The high security card and reader prevents any duplicates of the card information

Security from network isolation

The in-built gateway of the indoor panel and Smart Access Point makes the door communication, access control and home and building automation as a dedicated network system.

Cyber security and data privacy

The cyber security ensures the encrypted data transmission via internet.

Security from user authentication

Different user groups or different authorities can manage or provide the legitimate access to open any locks at any time you like.





Simplicity

The real genius of this highly sophisticated system, however, is found in its ease-of-use. It's easy to set up users, search and play back recorded video, back up video, footage recordings and more.

Easy commission

Quickly create the building structure and scan the QR code of a device to place into the desired location, upload the information into devices. 1-2-3, Done!

Easy installation

Series of installation box for efficient and effective installation, plus wireless and PoE connection make the system really easy to install.

Easy setting

The parameter setting and interaction are down to its intuitive browser-free management software.



Flexibility

ABB's IP innovation provides flexible solutions that can satisfy your own living habit and style. No matter the kind of building, ABB is your trustworthy partner.

Flexible by scalability

Thanks to the IP platform, it is the ideal solution in residential home, community, commercial building, school, hospitals, without limitation of the distance and the capacity.

Flexible by modularity

Outdoor station and indoor stations are integrated in a modular concept.

Flexible by centralization and decentralization

Local connection through home network or remote connection through MyBuildings portal powered by ABB Ability allow access from everywhere.



FUNCTIONS

A protected building and its environment are an essential part of feeling good and being happy. Our systems are designed with an elegant and fashionable outlook that brings good user experience. At the same time, innovative functionality that guarantees more security and comfort.



Door communication

ABB-Welcome IP

The outdoor station series can be used in single homes to high-rises, as well as office buildings, industrial properties, hotels and hospitals.

—
01 Video Pushbutton
outdoor station,
Stainless steel

—
02 Video Keypad
outdoor station,
Stainless steel

—
03 Video outdoor
station, touch 5",
Stainless steel

—
04 Video Barbutton
outdoor station,
Stainless steel

ABB-Welcome IP door communication provides you with a highly sophisticated system with HD video communication from outdoor to indoor and indoor to indoor. Distance is now only a matter of IP connectivity, what makes planning and commissioning the simplest matter. And the users will be happy due to a unique and intuitive user interface in all devices. The well-known remote access of the main functionality is ensured by the MyBuildings portal powered by ABB Ability.

- HD camera with infra-red ensures clear images even at night time
- Rustproof, waterproof IP54, vandal proof IK 07
- Integrated status indicator for door status and induction loop for hearing aid
- Clean design with thin installation in both flush and surface mounted
- Access control integration with keypad, DesFire card reader
- Brushed stainless steel and white matt aluminum optional





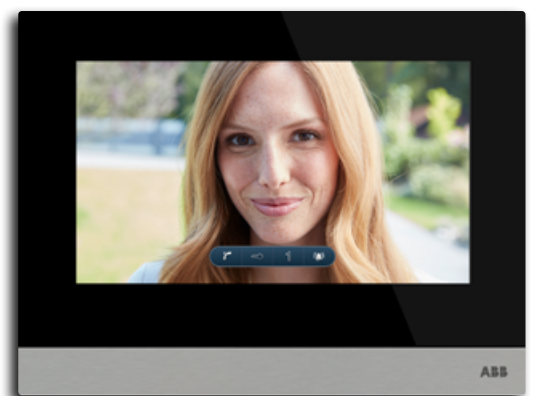


HD quality in multi-communication channel

Thanks to IP technology, the residents of the home and building are always accessible to visitors with high definition images transmitted from multi-channel bandwidth. It is much more colorful, brighter, clearer and no interference in communication.

One screen, all included

For IP Touch 5 inch outdoor station, different calling types are available, called by intuitively scrolling the directory or room numbers programmable locally or by management software.



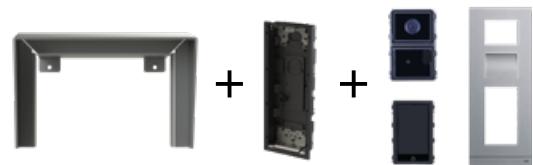
Installation now easier

Full range of installation boxes are offered to ensure the quality installation in different situations regardless of concrete walls or cavity walls. The flat flush mounted (7mm) and flat surface mounted (25mm) are both available, both with a very attractive design.

Minimized articles of rain hood, same product with same column of outdoor stations variants, either 1, 2, 3, 4 or 5 modules combination.

From minimal modules to maximum possibilities

The “snap-in” modular design enables the individual adaption to the system’s size, design, functionalities and budget to the respective requirements. Expansion and changes are also possible at any time by easily changing the modules.



—
01 Display
For messages, code
and building number

—
02 Bar pushbutton
3/6 or 4/8 pushbutton for
visitor to press for call

—
03 Round pushbutton
1/2/3 pushbutton for
visitor to press for calling

—
04 Round pushbutton
1/2/3 pushbutton for
visitor to press for calling

—
05 Round pushbutton
1/2/3 pushbutton for
visitor to press for calling

—
06 Keypad with
alphanumeric input
Digital inputting
module for keypad
outdoor station

—
07 Big display module
With integrated
transponder and keypad

—
08 A/V module with
720P camera
Audio & Video module



CONTROL

IP technology is dedicated to create a more intelligent community that can realize the unlimited connection and control to the devices and third-party platform. It makes every home and building become a comfortable and safe place.





ABB-Welcome IP touch

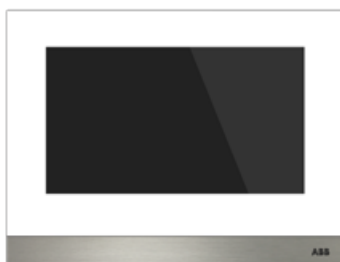
The IP touch 7 and 10 indoor stations are IP-based and provide a far greater number of options for building control.

—
01 IP touch 7,
White glass

—
02 IP touch 10,
Black glass

Powerful and beautiful. The new ABB's IP touch has the most two built-to-last colors: white and black glossy glass are available. The end strips are easy to change with varieties of material and colors optional. The integration with home and building automation makes it the best universal visualization panel in residential and non-residential areas.

- With high resolution display
- Intuitive GUI on sliding screen
- Selection of installation box options ensure easy installation on all kind of walls
- Induction loop for hearing aid
- Only 0.307" depth when flush mounted
- Both LAN and Wifi version to connect to home network



—
01



—
02





—
01

Home and building dashboard

Main menu with easy settings for door communication, video surveillance. The new ABB's IP Touch ensures that comprehensive functions in a room or entire building are centrally visualized, easy and intuitively operated in a comfortable and efficient manner.

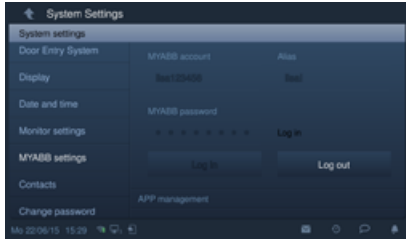
One device, all kinds of possibilities. Reviewing of the snapshot image or recorded video when away from home, always feel confidence in knowing what is going on. It is also very easy when hosting a party to leave an audio message or set the automatic unlock time range.

Look thin, and act changeable

Extra thin passe-partout is really trend setting. Front frameless genuine glass in black and white plus easy changeable end strip with different color. Extremely slim in both flush and surface mounted situations represents this new series of indoor panels, in a combination of art and science.



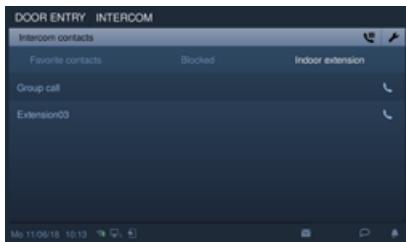
-
- 01 Dashboard
-
- 02 App connection
-
- 03 App
-
- 04 External intercom
-
- 05 Internal intercom



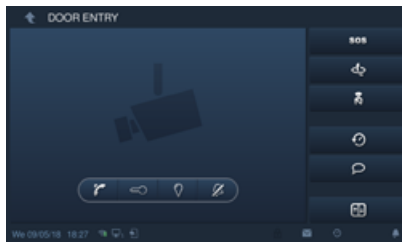
02



03



04



05



Visualizations tool

As the comfort interface for advanced setting when connecting the outdoor station. The installer can easily set the parameters using IP touch with comfort.

Easy App connection

In-built IPGW allows direct App integration, simply input MyABB account in the screen to activate the function.

Versatile intercom

- External intercom
- call other apartment
 - call outdoor station
 - call guard unit

Internal intercom possible

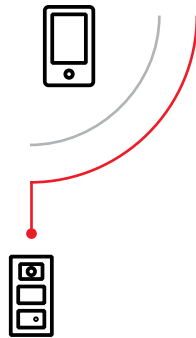
- call all
- dedicated call
- call App

App & Cloud

Local and remote management

Every area of the house can be remotely controlled via the App. This helps the users to get access to every system from everywhere.

The App is a cloud based integrated platform working with both iOS and Android. It allows you to use your smart phone or tablet managing the calls from IP Touch 7" or 10", digital cylinder and surveillance locally or remotely. You can also set up your customized App with as many steps as you wish. Thanks to MyBuildings portal, the remote connection is totally automated and managed with the highest level of security and data privacy. No special settings need to be made on the internet router for this solution.



Door entry communication

- Local and remote unlock, light switching, mute call guard
- In-call volume and ringtone adjustment possible
- Internal intercom to App
- SOS
- Control the load on the associated actuator





Welcome App offers a lot of functions and applications depending on your daily habit. Most frequently used functions can be categorized in your easily recognizable place for comfort access and use.



One App satisfies all the system combinations

Welcome App is a bottom up integrated platform. It can not only work separately with door communication, and video surveillance, but also works with two or all systems together. What is more, the App will be compatible to 2 wire analog Welcome system, the icons and interface will be automatically adapted to the system for you to use.



Accessible anytime, anywhere

With ABB MyBuilding Portal you can always connect with your home or building anytime around the world. Welcome App makes it possible to identify and welcome the visitor, viewing the snapshot or real-time video stream not only at home, but also out of home in any place.



Configuration mode

Welcome App is not only for the end user, but also for the installer. After entering the configuration mode into the App, the QR code scanning can be utilized to create the building and floor structure efficiently that will help to easily visualize the project. Comfortable, easy and efficient commissioning to set up smartIP into a new benchmark for IP system.



History log review

Keep track of visitors and guests going in and out of the building. Dedicated door with time-stamp and date of use, stored locally and in the cloud. Full control at your hands. That is your unique Welcome App.

Property Management and Service

One software for all applications

The system can be equipped with guard unit in the property management rooms for easier communication indoor and outdoor stations.

Smart Management Software

The versatile system is also equipped with property management software, either with a web based version running in the Smart Access Point for small to medium size projects or PC software for big projects which can support above 500 devices. This makes maximum security and convenience possible for homes and buildings.

- Intuitive GUI with drag and drop features makes the configuration easy and efficient
- Flexible offering with standard version running server in the Smart Access Point (support devices ≤ 500) or premium version running the server in PC (no limitation of devices managed)
- Support different versions of web-browser
- SOS message sending to all devices in case of emergency
- Easy to configure the App for system or CCTV system



The Smart Management Software guides the users easily through the setup of the applications







Easy management

Manage all your users in one place with just a few simple clicks. You have the opportunity to individually determine who enters when and where, who has the right to view which camera. And if you want to change that just log-in, make your changes and it's done.



Manage all connected devices

You can manage all connected devices, configure parameters for each device locally or remotely. E.g. to send the personalized Welcome message to the dedicated touch outdoor stations, or to push the floor plan during commissioning to all the indoor stations. You can also manage and upgrade firmware of connected devices, whose latest firmware are pushed from the internet.

**Easy commissioning**

Illustrate very clearly with graphical building and vivid device icons, just 3 steps for the commissioning. First, set up floor plan with its floors and room; second, assign each connected device in the existing floor plan; finally, combine different devices according to your requirements.

**Enhanced security with record event log and receive notification and alert**

Keep track of visitors and guests going in and out of the building; a photo and time-stamp will capture and log all door access events locally and in cloud-based storage, where you can conveniently access the event log at any given time.

**Action among different systems**

You can customize the “When-then” relationships between different systems. This allows rules to be created, such as implementing an automatic shading function: “if the door is released, activate camera to make a snapshot”. Or you can create an automatic notification.

**Building-wide messaging**

Communicate with residents easily by utilizing the building-wide messaging capability. Or send a management message to the indoor stations with scope easily determined by the property managers. Either to all or certain parts of the building or users.



IP Guard Unit for concierges

Supports 24/7 building security

ABB highly regards the value of the guard unit in terms of its contemporary design and functionality; as well as modern touch display for a convenient user experience.

The guard unit with desktop design provides access to various services using the intuitive icon menu on the touch screen. Communication is possible with IP touch panel, outdoor station and other guard units.

- One of the best modern and high end aesthetic designs
- Metal desktop with brushed aluminum for device body
- Capacitive 7" multi-touch screen
- High resolution 1024 x 600
- Intuitive GUI for easy scrolling operation
- Hands-free and handset communication to combine privacy and ease
- Unlock all doors or dedicated doors in case of emergency
- Intercom with residents or the other guard
- Sending and receiving messages from indoor stations and Apps

—
01 IP Guard Unit
for concierges



—
01





Easy directory management

Considering the situation that requires hundreds or even thousands of names in the IP guard unit, it would be a terrible situation. Now thanks to the management software, the building directory list can be created and imported from the PC, which is more natural, comfortable and efficient.



Day and night interception

Don't worry the moment when the security guard is off work during the night. The Welcome IP guard unit now supports the manual or automated day mode and night mode switching with configurable time ranges determined by the guard that will improve the building security all day long.

Applications

Multiple connections and possibilities

The IP connectivity brings all systems together to create a smartIP ecosystem for a holistic building solution in commercial, public or residential buildings.

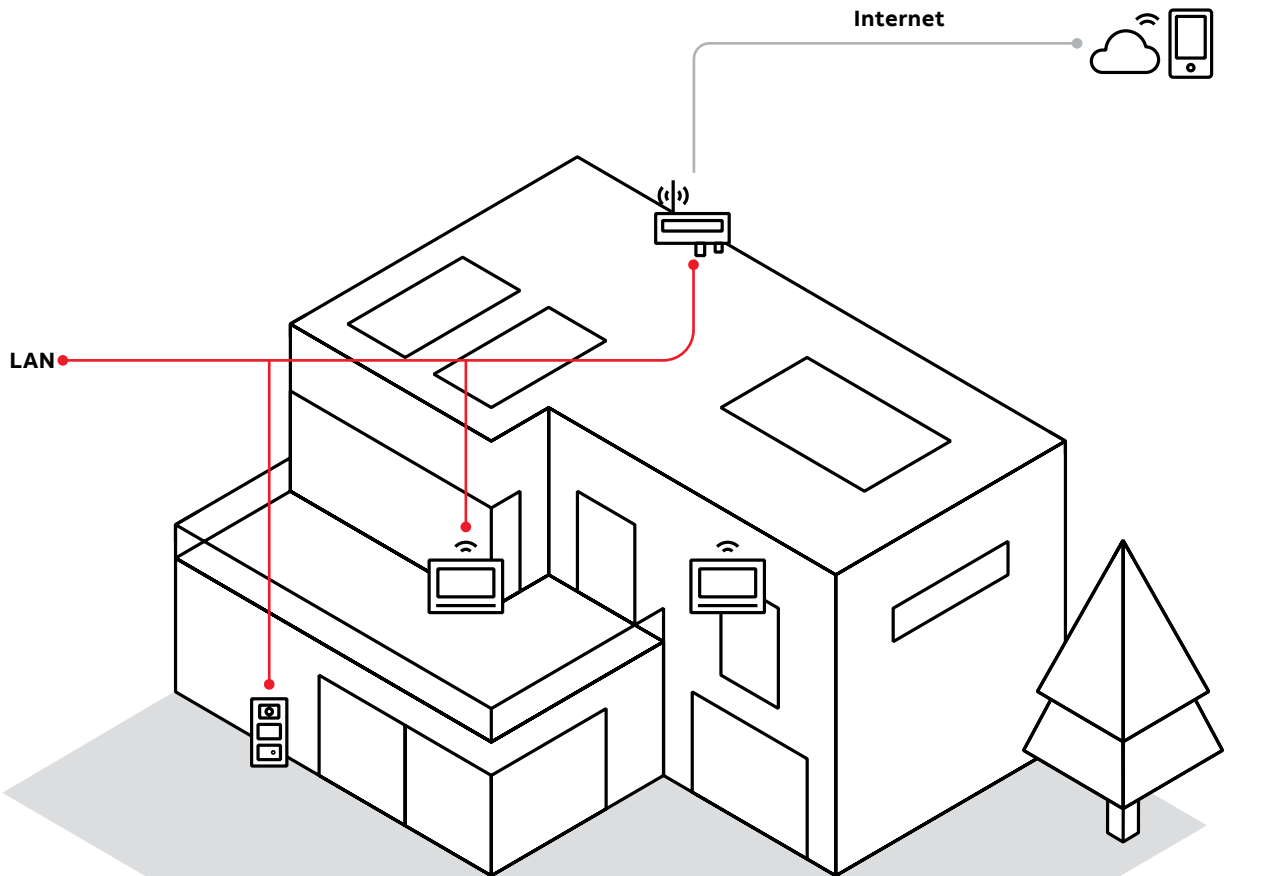





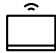

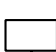






Applications

Door communication

The door communication ABB-Welcome IP breaks the limitation of distance and apartment quantity. Property management can monitor all the entrances and welcome the guests. At the same time, owners can use the App to open the door remotely.

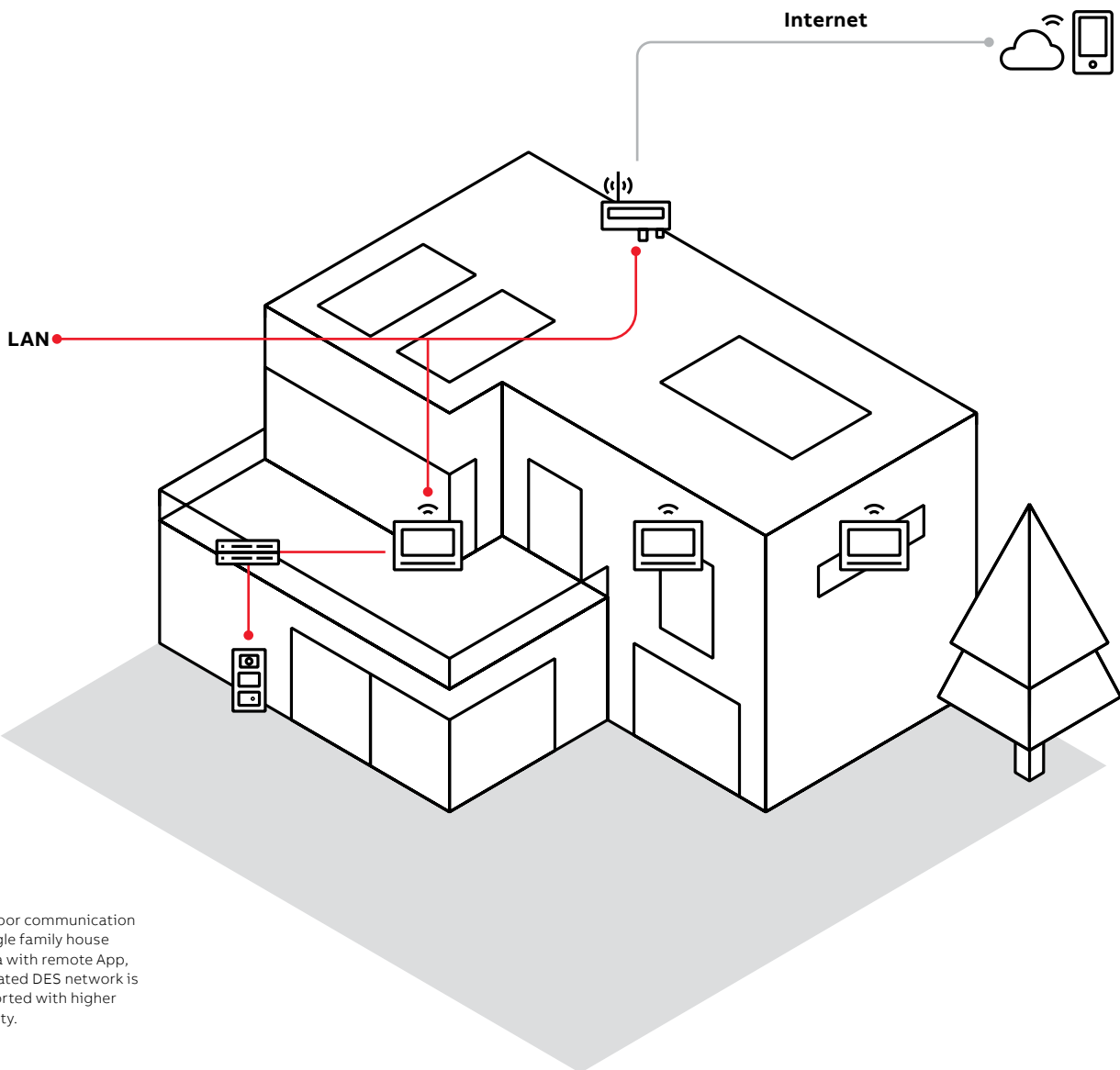


The door communication in single family house or villa with remote App, all the devices are linked to the same home network.

-  Router
-  Smart Access Point
-  IP Touch
-  Smart Management Software
-  Cloud
-  PoE Switch
-  Smart Cylinder
-  IP Camera
-  Outdoor station
-  Mobile

Applications

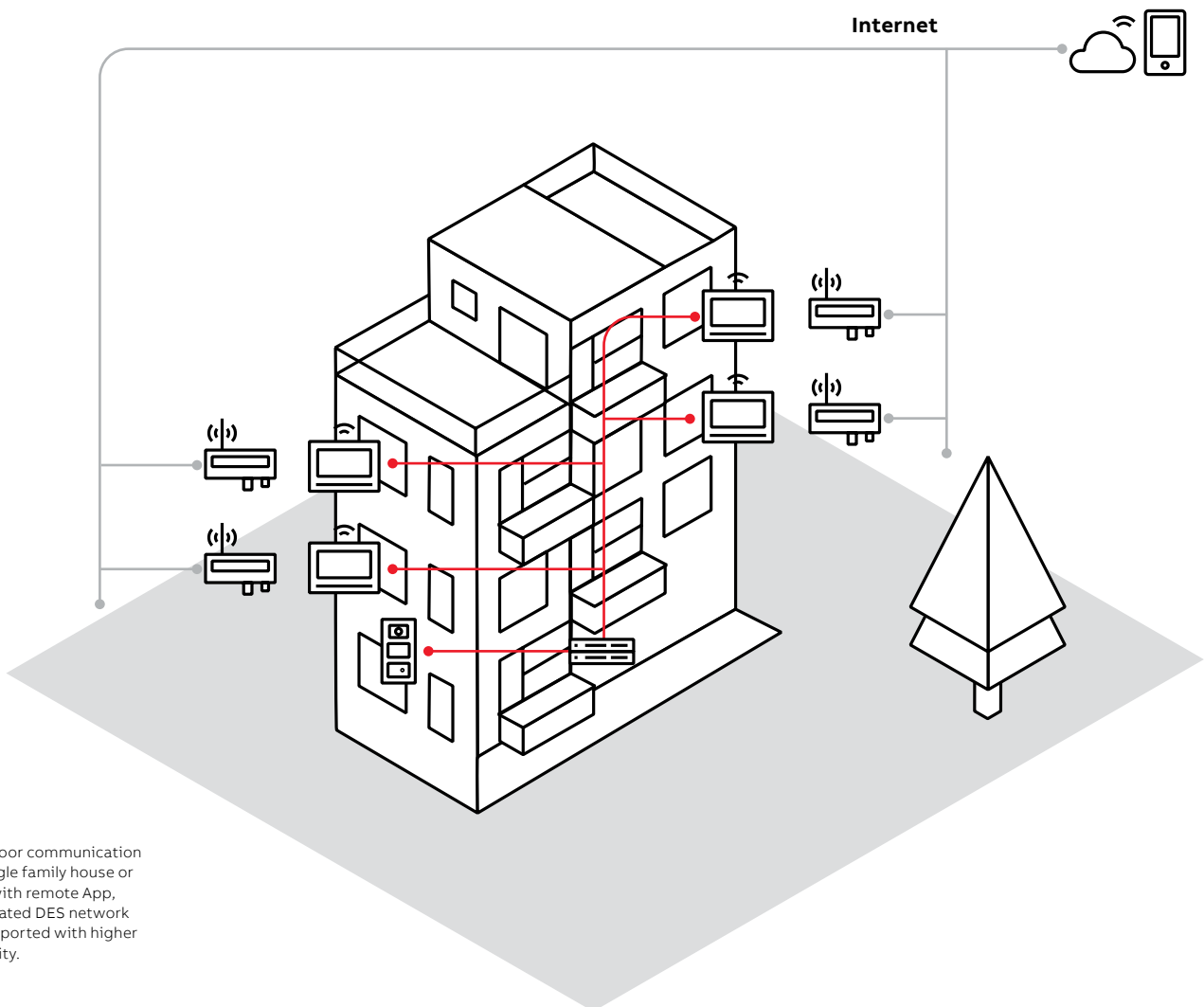
Door communication



—
The door communication in single family house or villa with remote App, dedicated DES network is supported with higher security.

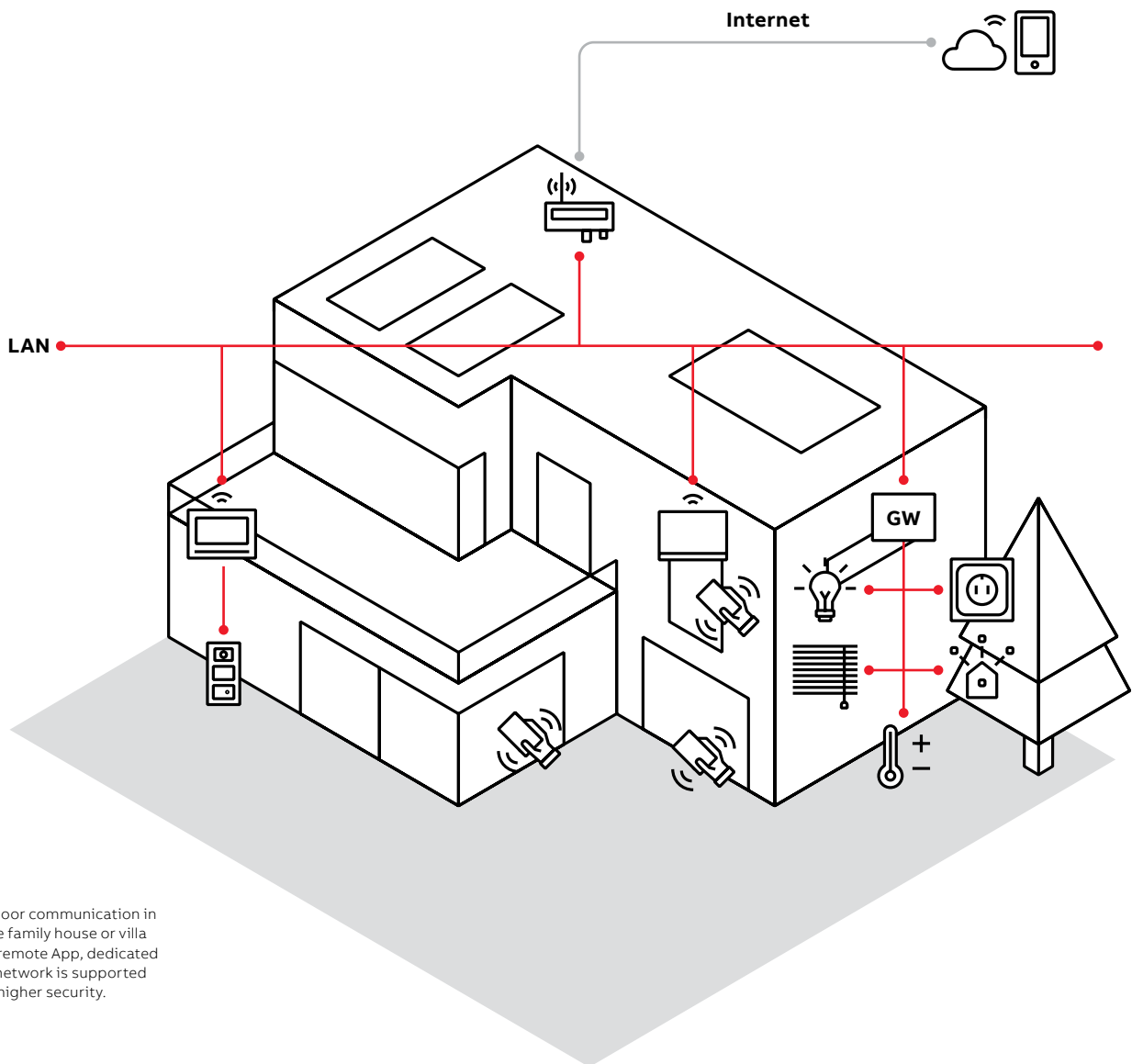
Applications

Door communication



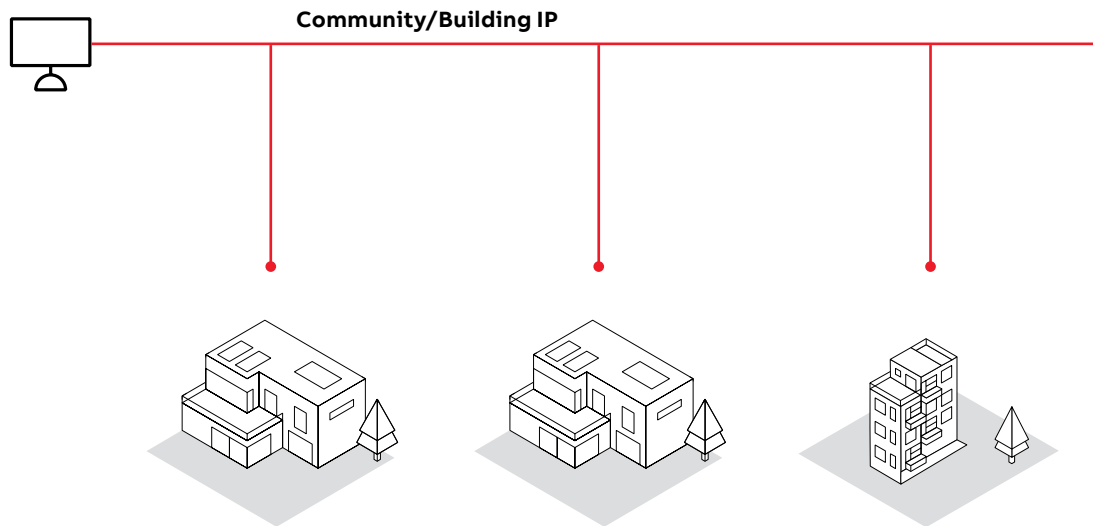
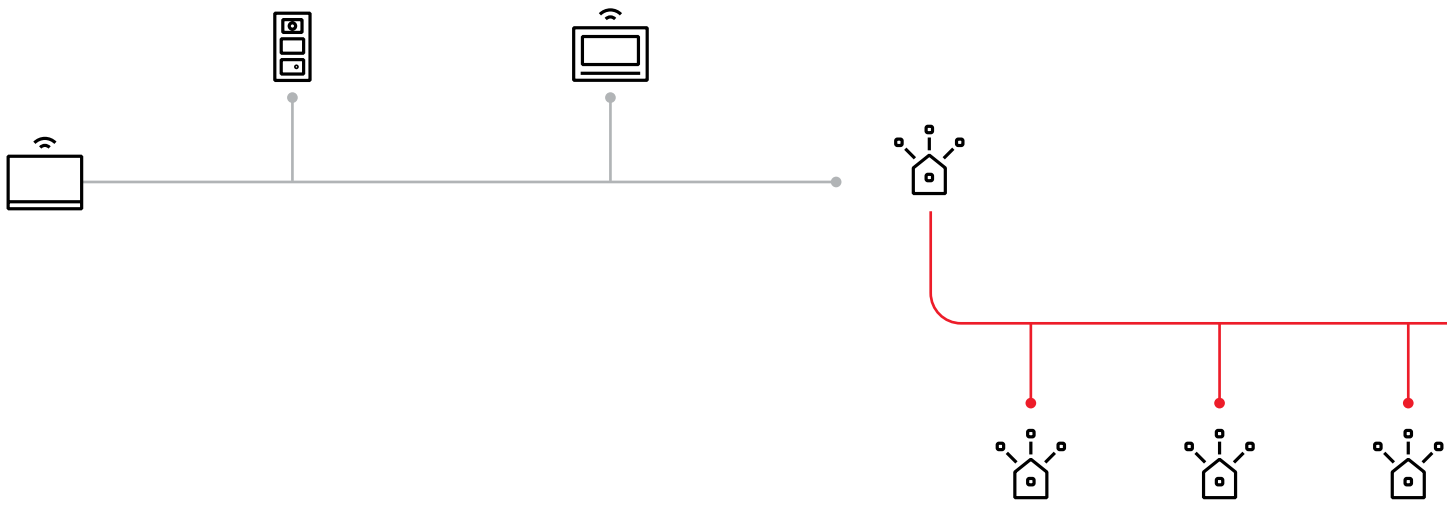
— The door communication in single family house or villa with remote App, dedicated DES network is supported with higher security.

Applications

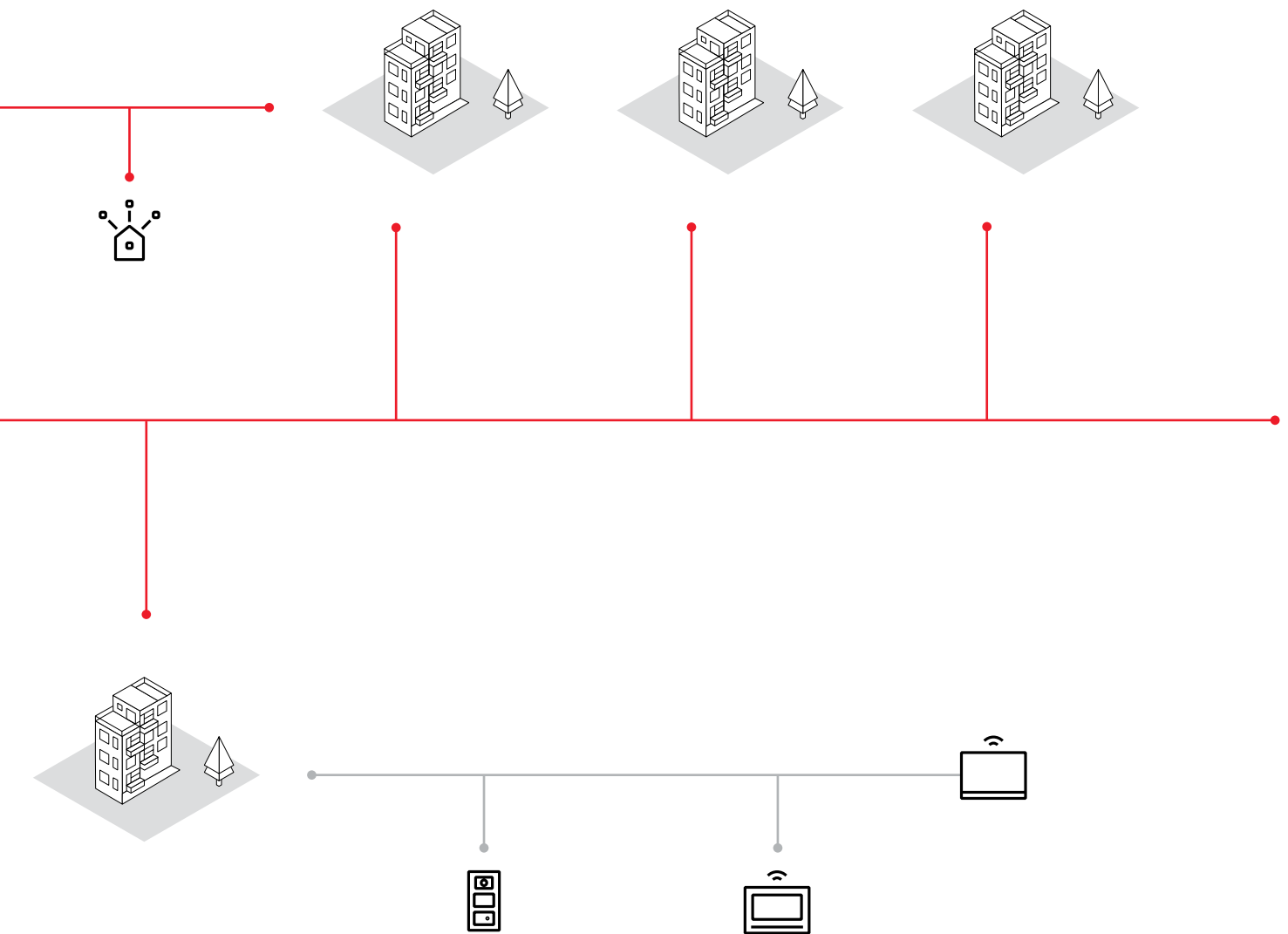


The door communication in single family house or villa with remote App, dedicated DES network is supported with higher security.

Applications



The whole system with management software to simultaneously monitor and both the community of a high building and villa or commercial building.



Door entry system

ABB-Welcome IP - Video outdoor stations



Video outdoor station, touch 5", white

Description	Video outdoor station with 5 inch touch screen, integrated with transponder and keypad serves as end device for the communication with IP touch panel, guard unit or property management.
Features	<ul style="list-style-type: none"> - HD video streaming (720P) with 130 degree angle - Super anti-fog coating and in-built heater - LED indicator for real-time status - Intuitive operable touchscreen & Virtual keypad integrated - Advertising or Developer promotion display area - Name list / logo / physical address / logical address calling type - Wiegand output available - Opening of the door by DESFire or NFC
Technical details	<ul style="list-style-type: none"> - Flush mounting and surface mounting - Dustproof and waterproof as IP54 - Dimensions: 13.740" x 5.315"1.141"
Version	Touch 5"
Article no.	H81381T-W
Order no.	2TMA130010W0013



Video outdoor station, touch 5", stainless steel

Description	Video outdoor station with 5 inch touch screen, integrated with transponder and keypad serves as end device for the communication with IP touch panel, guard unit or property management.
Features	<ul style="list-style-type: none"> - HD video streaming (720P) with 130 degree angle - Super anti-fog coating and in-built heater - LED indicator for real-time status - Intuitive operable touchscreen & Virtual keypad integrated - Advertising or Developer promotion display area - Name list / logo / physical address / logical address calling type - Wiegand output available - Opening of the door by DESFire or NFC or IC card. - Brushed stainless steel surface
Technical details	<ul style="list-style-type: none"> - Flush mounting and surface mounting - Dustproof and waterproof as IP54, vandal proof as IK07 - Dimensions: 13.740" x 5.315"1.141"
Version	Touch 5"
Article no.	H81381T-S
Order no.	2TMA130010X0009

Door entry system

ABB-Welcome IP - Video outdoor stations



Video pushbutton outdoor station, white

Description	Video outdoor station with transponder and pushbutton(s) serves as end device for the communication with IP touch panel, guard unit or property management.		
Features	<ul style="list-style-type: none"> - HD video streaming(720P) with 130 degree angle - Super anti-fog coating and in-built heater - LED indicator for real-time status - Bar and around pushbutton for optional - Pushbutton could be programmed as you want (switch on lighting, call indoor station or guard unit) - Bright back-lit ensures clear nameplate at night time - Opening of the door by DESFire or NFC or IC card. - Brushed stainless steel surface 		
Technical details	<ul style="list-style-type: none"> - Flush mounting and surface mounting - Dustproof and waterproof as IP54, vandal proof as IK07 - Dimensions: 10.901" x 5.315" x 1.141 		
Version	1 pushbutton	2 pushbutton	3 pushbutton
Article no.	H81381P1-W	H81381P2-W	H81381P3-W
Order no.	2TMA130010W0021	2TMA130010W0025	2TMA130010W0029



Video pushbutton outdoor station, stainless steel

Description	Video outdoor station with transponder and pushbutton(s) serves as end device for the communication with IP touch panel, guard unit or property management.		
Features	<ul style="list-style-type: none"> - HD video streaming(720P) with 130 degree angle - Super anti-fog coating and in-built heater - LED indicator for real-time status - Bar and around pushbutton for optional - Pushbutton could be programmed as you want (switch on lighting, call indoor station or guard unit) - Bright back-lit ensures clear nameplate at night time - Opening of the door by DESFire or NFC or IC card. - Brushed stainless steel surface 		
Technical details	<ul style="list-style-type: none"> - Flush mounting and surface mounting - Dustproof and waterproof as IP54, vandal proof as IK07 - Dimensions: 10.901" x 5.315" x 1.141 		
Version	1 pushbutton	2 pushbutton	3 pushbutton
Article no.	H81381P1-S	H81381P2-S	H81381P3-S
Order no.	2TMA130010X0001	2TMA130010X0002	2TMA130010X0003

Door entry system

ABB-Welcome IP - Video outdoor stations



Video keypad outdoor station, white

Description	Video outdoor station with display, transponder and keypad serves as end device for the communication with IP touch panel, guard unit or property management.		
Features	<ul style="list-style-type: none"> - HD video streaming (720P) with 130 degree angle - Super anti-fog coating and in-built heater - LED indicator for real-time status - Module design makes installation as easy as 1-2-3 - Physical address / logical address calling type - Wiegand output available - Opening of the door by DESFire or NFC or IC card. - Brushed stainless steel surface 		
Technical details	<ul style="list-style-type: none"> - Flush mounting and surface mounting - Dustproof and waterproof as IP54, vandal proof as IK07 - Dimensions: 13.740" x 5.314" x 1.141" 		
Version	With ID	With IC	
Article no.	H81381K-W	H81382K-W	
Order no.	2TMA130010W0033	2TMA130010W0037	



Video keypad outdoor station, stainless steel

Description	Video outdoor station with display, transponder and keypad serves as end device for the communication with IP touch panel, guard unit or property management.		
Features	<ul style="list-style-type: none"> - HD video streaming (720P) with 130 degree angle - Super anti-fog coating and in-built heater - LED indicator for real-time status - Module design makes installation as easy as 1-2-3 - Physical address / logical address calling type - Wiegand output available - Opening of the door by DESFire or NFC or IC card. - Brushed stainless steel surface 		
Technical details	<ul style="list-style-type: none"> - Flush mounting and surface mounting - Dustproof and waterproof as IP54, vandal proof as IK07 - Dimensions: 13.740" x 5.314" x 1.141" 		
Version	With ID	With IC	
Article no.	H81383K-S	H81384K-S	
Order no.	2TMA130010X0037	2TMA130010X0038	



Mini outdoor station, Aluminum alloy

Features	<ul style="list-style-type: none"> - Compact size, surface mounted and flush mounted optional - 1 button and 2 buttons optional - Clean design with integrated status display - Light switch or calling guard programmable for the 2nd button - Up to 2 locks connections - Dustproof and waterproof as IP54, and vandal proof as IK07 			
Technical details	Dimensions: 6.614" X 3.987 X 1.023"		Dimensions: 7.086" X 4.133" X 1.692"	
Version	1 button, ID, SM	2 buttons, ID, SM	1 button, ID, FM	2 buttons, ID, FM
Article no.	H81313P1-A	H81313P2-A	H81363P1-A	H81363P2-A
Order no.	2TMA130010A0001	2TMA130010A0004	2TMA130010A0007	2TMA130010A0010

Door entry system

ABB-Welcome IP - Video indoor stations



IP touch 7, white

Description	The stylish multifunctional IP touch panel fits elegantly into any interior. Thanks to its intuitive design, the IP touch panel will display everything that is happening in front of your door. In addition, the panel can be a centralized screen for other ABB sub-system, like CCTV, access control and home automation.	
Features	<ul style="list-style-type: none"> - Intuitive GUI on sliding screen (1024 x 600) - Clean & consistent design with invisible mic & speaker hole - Slim thickness with 0.307" when flush mounted - Color,material, End trip & mounting type selectable - Extension to App without additional system device - Central control panel to DES,Smart lock,Surveillance,Basic alarm, Environmental health,Energy management - Cyber security and data privacy, - Easy installation in all kind of walls - Easy commissioning by QR code scanning or central PC management software - PoE and local power supply optional, - Remote fireware update 	
Technical details	<ul style="list-style-type: none"> - Flush mounting and surface mounting - Dustproof and waterproof as IP30 - Dimensions: 7.834" X 5.905" X 0.669" (LAN+WiFi) 7.834" X 5.905" X 1.181" (LAN+LAN) 	
Version	support DES+LAN + WiFi, DC&PoE, full glass, SM&FM, white	with cyber security boot & storage, support DES+APP, LAN + WiFi, DC&PoE, with T-loop, end strip, SM&FM, white
Article no.	H8236-4W	H8236-5W
Order no.	2TMA130050W0065	2TMA130050W0067



IP touch 7, black

Description	The stylish multifunctional IP touch panel fits elegantly into any interior. Thanks to its intuitive design, the IP touch panel will display everything that is happening in front of your door. In addition, the panel can be a centralized screen for other ABB sub-system, like CCTV, access control and home automation.	
Features	<ul style="list-style-type: none"> - Intuitive GUI on sliding screen(1024 x 600) - Clean & consistent design with invisible mic & speaker hole - Slim thickness with 0.307" when flush mounted - Color,material, End trip & mounting type selectable - Extension to App without additional system device - Central control panel to DES,Smart lock,Surveillance,Basic alarm, Environmental health,Energy management - Cyber security and data privacy, - Easy installation in all kind of walls - Easy commissioning by QR code scanning or central PC management software - PoE and local power supply optional, - Remote fireware update 	
Technical details	<ul style="list-style-type: none"> - Flush mounting and surface mounting - Dustproof and waterproof as IP30 - Dimensions: 7.834" X 5.905" X 0.669" (LAN+WiFi) 7.834" X 5.905" X 1.181" (LAN+LAN) 	
Version	support DES+LAN + WiFi, DC&PoE, full glass, SM&FM, black	with cyber security boot & storage, support DES+APP, LAN + WiFi, DC&PoE, with T-loop, end strip, SM&FM, black
Article no.	H8236-4B	H8236-5B
Order no.	2TMA130050B0065	2TMA130050B0067

Door entry system

ABB-Welcome IP - Video indoor stations



IP touch 10, White

Description	The stylish multifunctional IP touch panel fits elegantly into any interior. Thanks to its intuitive design, the IP touch panel will display everything that is happening in front of your door. In addition, the panel can be a centralized screen for other ABB sub-system, like video surveillance, access control and home automation	
Features	<ul style="list-style-type: none"> - Intuitive GUI on sliding screen (1024 x 600) - Clean & consistent design with invisible mic & speaker hole - Slim thickness with 0.307" when flush mounted - Color,material, End trip & mounting type selectable - Extension to App without additional system device - Central control panel to DES, Surveillance - Cyber security and data privacy - Easy installation in all kind of walls - PoE and local power supply 	
Technical details	<ul style="list-style-type: none"> - Flush mounting and surface mounting - Dustproof and waterproof as IP30 - Dimensions: 9.881" X 7.283" X 0.669" (LAN+WiFi) 9.881" X 7.283" X 1.220" (LAN+LAN) 	
Version	LAN + LAN interface, with induction loop, with PoE	LAN + WiFi interface, with induction loop, with PoE
Article no.	H8237-5W	H8237-4W
Order no.	2TMA130050W0055	2TMA130050W0054

IP touch 10, Black

Description	The stylish multifunctional IP touch panel fits elegantly into any interior. Thanks to its intuitive design, the IP touch panel will display everything that is happening in front of your door. In addition, the panel can be a centralized screen for other ABB sub-system, like video surveillance, access control and home automation	
Features	<ul style="list-style-type: none"> - Intuitive GUI on sliding screen (1024 x 600) - Clean & consistent design with invisible mic & speaker hole - Slim thickness with 0.307" when flush mounted - Color,material, End trip & mounting type selectable - Extension to App without additional system device - Central control panel to DES, Surveillance - Cyber security and data privacy - Easy installation in all kind of walls - PoE and local power supply 	
Technical details	<ul style="list-style-type: none"> - Flush mounting and surface mounting - Dustproof and waterproof as IP30 - Dimensions: 9.881" X 7.283" X 0.669" (LAN+WiFi) 9.881" X 7.283" X 1.220" (LAN+LAN) 	
Version	Stainless steel LAN + LAN interface, with induction loop, with PoE	Stainless steel LAN + WiFi interface, with induction loop, with PoE
Article no.	H8237-5B	H8237-4B
Order no.	2TMA130050B0055	2TMA130050B0054



Door entry system

ABB-Welcome IP - System devices



Guard unit

Description	The guard unit with desk-top design provides access to various services using the intuitive icon menu on the touch screen. Communication is possible with IP touch panel, outdoor station and other guard unit.
Features	<ul style="list-style-type: none"> - Support to establish surveillance to outdoor station or IP camera. - Intercept to increase the security and service. - Support to release all doors or dedicated doors in case of emergency - Receive the alarm and panic call (SOS) from IP touch panel.
Technical details	- Dimensions: 10.433" x 6.496" x 4.606"
Article no.	H8303
Order no.	2TMA130160W0018



IP actuator (LAN port)

Description	Connecting electrical door opener or hall light directly
Features	- Easy to adjust the switching duration of unlock or the switching of light
Technical details	- Dimensions: 3.543" X 2.834" X 2.559"
Version	Gery
Article no.	H8304
Order no.	2TMA130160H0051



24VDC mini Power adaptor

Description	Power adaptor supplies the power for IP touch panel and Wip AP
Features	- Provide stable power supply input
Article no.	53012PS
Order no.	2TMA130160W0024

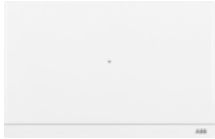


Power supply, 27 V DC, 95 W

Description	Power adaptor suppliers the power for system devices.
Features	- Support over voltage, over current, over-heat and short-circuit protection
Technical details	- Dimensions: 7.007" X 3.543" X 2.559"
Article no.	YSM01-PS
Order no.	2TMA130160H0085

Door entry system

ABB-Welcome IP - System devices



Smart Access Point

Description	A central management device of Welcome IP and AccessControl system, it can couple as sub-system, and also manage interworking of multiple sub-system of same type. Commissioning and remote control is executed via web interface. No additional commissioning software is required. Connection to the network via WLAN client mode or via CAT cable to manage all your access, configure all your devices, record your logs, etc.
Features	<ul style="list-style-type: none"> - Easy to commissioning - Access rights, who, where, when... - Enhanced security with record event log and receive notification and alert - Manage all connected devices - Interaction between different systems - Manage welcome App - Event management and building-wide messaging - Integrated chimey, easy for retrofit - In-build BLE, the best choice for standalone AC system
Technical details	<ul style="list-style-type: none"> - Dimension: 8.031" x 5.196" x 1.259" - Network parameter: <ul style="list-style-type: none"> • Operating mode: LAN/Wireless access point • Wireless transmission band: IEEE 802.11 a/b/g/n 2.4 GHz/5.8 GHz • Safety standard: WPA-PSK, WPA2-PSK, WPA, WPA2, IEEE 802.1x • Network connection standard: 10 / 100 Mbps, auto MDI/MDI-X - Radio interface: IEEE 802.15.4 2.4GHz radio - Power supply: <ul style="list-style-type: none"> • 24VDC, together with ABB power adaptor • PoE(Power over Ethernet) - Environment: <ul style="list-style-type: none"> • Temperature: -10°C to +45°C • Protection type: IP30 • Vandal proof: IK07 • Humidity: 0 to 95%, non-condensing
Version	Pro
Article no.	D04011
Order no.	2TMA400260W0002

Door entry system

ABB-Welcome IP - Installation material



Flush-mounted box, 1 module, size 1/1

Description	Mounting of outdoor station into the wall	
Features	<ul style="list-style-type: none"> - The flush mounting box is fitted with knock down holes for cabling from left, right, bottom or back. - The product is packed with accessories to ensure qualified installation. 	
Technical details	- Dimensions: 5.472" x 5.905" x 1.417"	
Version	Anthracite	Grey
Article no.	41381F-B	41381F-H
Order no.	2TMA130160B0001	2TMA130160H0001



Flush-mounted box, 2 modules, size 1/2

Description	Mounting of outdoor station into the wall	
Features	<ul style="list-style-type: none"> - The flush mounting box is fitted with knock down holes for cabling from left, right, bottom or back. - The product is packed with accessories to ensure qualified installation. 	
Technical details	- Dimensions: 5.472" x 5.905" x 1.417"	
Version	Anthracite	Grey
Article no.	41382F-B	41382F-H
Order no.	2TMA130160B0002	2TMA130160H0002



Flush-mounted box, 3 modules, size 1/3

Description	Mounting of outdoor station into the wall	
Features	<ul style="list-style-type: none"> - The flush mounting box is fitted with knock down holes for cabling from left, right, bottom or back. - The product is packed with accessories to ensure qualified installation. 	
Technical details	- Dimensions: 10.826" x 5.236" x 2.047"	
Version	Anthracite	Grey
Article no.	41383F-B	41383F-H
Order no.	2TMA130160B0003	2TMA130160H0003



Flush-mounted box, 4 modules, size 1/4

Description	Mounting of outdoor station into the wall	
Features	<ul style="list-style-type: none"> - The flush mounting box is fitted with knock down holes for cabling from left, right, bottom or back. - The product is packed with accessories to ensure qualified installation. 	
Technical details	- Dimensions: 13.661" x 5.236" x 2.047"	
Version	Anthracite	Grey
Article no.	41384F-B	41384F-H
Order no.	2TMA130160B0004	2TMA130160H0004

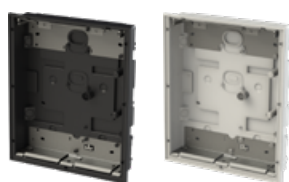
Door entry system

ABB-Welcome IP - Installation material



Flush-mounted box, 5 modules, size 1/5

Description	Mounting of outdoor station into the wall	
Features	<ul style="list-style-type: none"> - The flush mounting box is fitted with knock down holes for cabling from left, right, bottom or back. - The product is packed with accessories to ensure qualified installation. 	
Technical details	- Dimensions: 16.496" x 5.236" x 2.047"	
Version	Anthracite	Grey
Article no.	41385F-B	41385F-H
Order no.	2TMA130160B0005	2TMA130160H0005



Flush-mounted box, 6 modules, size 2/3

Description	Mounting of outdoor station into the wall	
Features	<ul style="list-style-type: none"> - The flush mounting box is fitted with knock down holes for cabling from left, right, bottom or back. - The product is packed with accessories to ensure qualified installation. 	
Technical details	- Dimensions: 10.826 x 9.173" x 2.047"	
Version	Anthracite	Grey
Article no.	41386F-B	41386F-H
Order no.	2TMA130160B0006	2TMA130160H0006



Surface-mounted box, 1 module, size 1/1

Description	Mounting of outdoor station on the wall	
Features	<ul style="list-style-type: none"> - For surface-mounted installation of outdoor station. - The product is packed with accessories to ensure qualified installation. 	
Technical details	- Dimensions: 5.393" x 5.236" x 1.259"	
Version	Anthracite	Grey
Article no.	41381S-B	41381S-H
Order no.	2TMA130160B0009	2TMA130160H0009

Door entry system

ABB-Welcome IP - Installation material



Surface-mounted box, 2 modules, size 1/2

Description	Mounting of outdoor station on the wall	
Features	- For surface-mounted installation of outdoor station. - The product is packed with accessories to ensure qualified installation.	
Technical details	- Dimensions: 7.992" x 5.236" x 1.259"	
Version	Anthracite	Grey
Article no.	41382S-B	41382S-H
Order no.	2TMA130160B0010	2TMA130160H0010



Surface-mounted box, 3 modules, size 1/3

Description	Mounting of outdoor station on the wall	
Features	- For surface-mounted installation of outdoor station. - The product is packed with accessories to ensure qualified installation.	
Technical details	- Dimensions: 10.826" x 5.236" x 1.259"	
Version	Anthracite	Grey
Article no.	41383S-B	41383S-H
Order no.	2TMA130160B0011	2TMA130160H0011



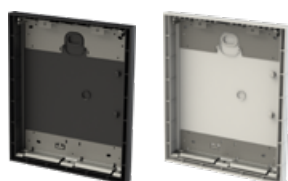
Surface-mounted box, 4 modules, size 1/4

Description	Mounting of outdoor station on the wall	
Features	- For surface-mounted installation of outdoor station. - The product is packed with accessories to ensure qualified installation.	
Technical details	- Dimensions: 13.661" x 5.236" x 2.047"	
Version	Anthracite	Grey
Article no.	41384S-B	41384S-H
Order no.	2TMA130160B0012	2TMA130160H0012



Surface-mounted box, 5 modules, size 1/5

Description	Mounting of outdoor station on the wall	
Features	- For surface-mounted installation of outdoor station. - The product is packed with accessories to ensure qualified installation.	
Technical details	- Dimensions: 16.496" x 5.236" x 1.259"	
Version	Anthracite	Grey
Article no.	41385S-B	41385S-H
Order no.	2TMA130160B0013	2TMA130160H0013



Surface-mounted box, 6 modules, size 2/3

Description	Mounting of outdoor station on the wall	
Features	- For surface-mounted installation of outdoor station. - The product is packed with accessories to ensure qualified installation.	
Technical details	- Dimensions: 10.826" x 9.173" x 1.259"	
Version	Anthracite	Grey
Article no.	41386S-B	41386S-H
Order no.	2TMA130160B0014	2TMA130160H0014

Door entry system

ABB-Welcome IP - Installation material



Flush-mounted box & pre-installation box for IP touch 7&10

Description	Flush-mounted box and Pre installation box for 7&10 inch video indoor station
Features	- The flush mounting box is fitted with knock down holes for cabling from left, right, bottom or back. - The product is packed with accessories to ensure qualified installation.
Technical details	- Dimensions: 7.637" x 5.708" x 2.165"
Version	2 boxes together
Article no.	42361F
Order no.	2TMA130160B0132



Pre-installation box, 1 module, size 1/1

Description	Serves for the mounting of outdoor station into the wall for higher stability.
Features	- For surface-mounted installation of outdoor station. - The product is packed with accessories to ensure qualified installation.
Technical details	- Dimensions: 5.236" x 4.881" x 2.559"
Version	Anthracite
Article no.	41381PB
Order no.	2TMA130160B0017



Pre-installation box, 2 modules, size 1/2

Description	Serves for the mounting of outdoor station into the wall for higher stability.
Features	- For surface-mounted installation of outdoor station. - The product is packed with accessories to ensure qualified installation.
Technical details	- Dimensions: 7.834" x 4.881" x 2.559"
Version	Anthracite
Article no.	41382PB
Order no.	2TMA130160B0018



Pre-installation box, 3 modules, size 1/3

Description	Serves for the mounting of outdoor station into the wall for higher stability.
Features	- For surface-mounted installation of outdoor station. - The product is packed with accessories to ensure qualified installation.
Technical details	- Dimensions: 10.629" x 4.881" x 2.559"
Version	Anthracite
Article no.	41383PB
Order no.	2TMA130160B0019



Pre-installation box, 4 modules, size 1/4

Description	Serves for the mounting of outdoor station into the wall for higher stability.
Features	- For surface-mounted installation of outdoor station. - The product is packed with accessories to ensure qualified installation.
Technical details	- Dimensions: 7.637" x 5.708" x 2.165"
Version	2 boxes together
Article no.	41384PB
Order no.	2TMA130160B0020

Door entry system

ABB-Welcome IP - Installation material



Pre-installation box, 5 modules, size 1/5

Description	Serves for the mounting of outdoor station into the wall for higher stability.
Features	- For surface-mounted installation of outdoor station. - The product is packed with accessories to ensure qualified installation.
Technical details	- Dimensions: 16.338" x 4.881" x 2.559"
Version	Anthracite
Article no.	41385PB
Order no.	2TMA130160B0021



Pre-installation box, 6 modules, size 2/3

Description	Serves for the mounting of outdoor station into the wall for higher stability.
Features	- For surface-mounted installation of outdoor station. - The product is packed with accessories to ensure qualified installation.
Technical details	- Dimensions: 13.070" x 10.669" x 8.818"
Version	Anthracite
Article no.	41386PB
Order no.	2TMA130160B0022



Surface mounted box for IP touch 7" panel

Description	Mounting of IP touch 7" panel on the wall	
Features	- For surface-mounted installation of outdoor station. - The product is packed with accessories to ensure qualified installation.	
Technical details	- Dimensions: 7.7555" x 5.826" x 0.511"	
Version	White	Black
Article no.	42361S-W	42361S-B
Order no.	2TMA130160W0017	2TMA130160B0080



Surface mounted box for IP touch 10"

Description	Mounting of IP Touch on the wall	
Features	- For surface-mounted installation of outdoor station. - The product is packed with accessories to ensure qualified installation.	
Technical details	- Dimensions: 9.881" x 7.244" x 0.551"	
Version	White	Black
Article no.	42371S-W	42371S-B
Order no.	2TMA130161W0001	2TMA130161B0001



Rain hood, size 1/x, For SM

Description	Rain hood for rust and water detection
Features	-The aluminum rain hood is designed to adapt both surface mounting
Technical details	- Dimensions: 6.929" x 3.858" x 5.629"
Version	For surface mounted
Article no.	41383RH
Order no.	2TMA130160A0009



Rain hood, size 2/x, Aluminium

Description	Rain hood for rust and water detection
Features	- The aluminum rain hood is designed to adapt both surface mounting
Technical details	- Dimensions: 10.354" x 3.858" x 5.629"
Version	For surface mounted
Article no.	41384RH
Order no.	2TMA130160A0010

Door entry system

ABB-Welcome IP - Installation material



Rain hood, size 1/x, Aluminium

Description	Rain hood for rust and water detection
Features	-The aluminum rain hood is designed to adapt both surface mounting and flush mounting.
Technical details	- Dimensions: 3.858" x 5.629" x 2.677"
Version	For flush mounted installation
Article no.	41381RH
Order no.	2TMA130160A0001



Rain hood, size 2/x, Aluminium

Description	Rain hood for rust and water detection
Features	-The aluminum rain hood is designed to adapt both surface mounting and flush mounting.
Technical details	- Dimensions: 3.858" x 9.566" x 2.677"
Version	For flush mounted installation
Article no.	41382RH
Order no.	2TMA130160A0002



Rain hood, size 3/x, Aluminium

Description	Rain hood for rust and water detection
Features	-The aluminum rain hood is designed to adapt both surface mounting and flush mounting.
Technical details	- Dimensions: 7.952" x 3.858" x 16.378"
Version	For surface mounted
Article no.	41385RH
Order no.	2TMA130160A0017



Video outdoor station frame, size 1/3

Description	Installation materials that used for outdoor station		
Features	- The invisible screw design is aesthetically pleasing		
Technical details	- Dimensions: 10.748" x 5.314" x 0.708"		
Version	White	Stainless steel	Aluminum
Article no.	41383CF-W	41383CF-S	41383CF-A
Order no.	2TMA130160W0002	2TMA130160X0004	2TMA200160A0003



Video outdoor station frame, size 1/4

Description	Installation materials that used for outdoor station		
Features	- The invisible screw design is aesthetically pleasing		
Technical details	- Dimensions: 13.740" x 5.314" x 0.708"		
Version	White	Stainless steel	Aluminum
Article no.	41384CF-W	41384CF-S	41384CF-A
Order no.	2TMA130160W0003	2TMA130160X0005	2TMA200160A0005



Video outdoor station frame, size 1/5

Description	Installation materials that used for outdoor station		
Features	- The invisible screw design is aesthetically pleasing		
Technical details	- Dimensions: 13.740" x 5.314" x 0.708"		
Version	White	Stainless steel	Aluminum
Article no.	41385CF-W	41385CF-S	41385CF-A
Order no.	2TMA130160W0004	2TMA130160X0006	2TMA200160A0007

Door entry system

ABB-Welcome IP - Installation material



Video outdoor station frame, size 2/3

Description	Installation materials that used for outdoor station	
Features	- The invisible screw design is aesthetically pleasing	
Technical details	- Dimensions: 10.905" x 9.251" x 0.708"	
Version	Stainless steel	Aluminum
Article no.	41386CF-S	41386CF-A
Order no.	2TMA130160X0007	2TMA200160A0009



Audio outdoor station frame, size 1/2

Description	Installation materials that used for outdoor station	
Features	- The invisible screw design is aesthetically pleasing	
Technical details	- Dimensions: 8.070" x 5.314" x 0.787"	
Version	Aluminum	
Article no.	41392CF-A	
Order no.	2TMA200160A0011	



Audio outdoor station frame (extended panel), size 1/3

Description	Installation materials that used for outdoor station	
Features	- The invisible screw design is aesthetically pleasing - It is possible to combine with other size 1/3 frame to extend multi-column frame installation to support more modules	
Technical details	- Dimensions: 10.905" x 5.314" x 0.708"	
Version	Stainless steel	Aluminum
Article no.	41393CF-S	41393CF-A
Order no.	2TMA130160X0060	2TMA200160A0013



Audio outdoor station frame (extended panel), size 1/4

Description	Installation materials that used for outdoor station	
Features	- The invisible screw design is aesthetically pleasing - It is possible to combine with other size 1/4 frame to extend multi-column frame installation to support more modules	
Technical details	- Dimensions: 13.740" x 5.314" x 0.708"	
Version	Stainless steel	Aluminum
Article no.	41394CF-S	41394CF-A
Order no.	2TMA130160X0064	2TMA200160A0015



Audio outdoor station frame, size 1/5

Description	Installation materials that used for outdoor station	
Features	- The invisible screw design is aesthetically pleasing - It is possible to combine with other size 1/5 frame to extend multi-column frame installation to support more modules	
Technical details	- Dimensions: 16.574" x 5.314" x 0.787"	
Version	Aluminum	
Article no.	41395CF-A	
Order no.	2TMA200160A0017	



Audio outdoor station frame, size 2/3

Description	Installation materials that used for outdoor station	
Features	- The invisible screw design is aesthetically pleasing	
Technical details	- Dimensions: 10.905" x 9.251" x 0.787"	
Version	Aluminum	
Article no.	41396CF-A	
Order no.	2TMA200160A0019	

Door entry system

ABB-Welcome IP - Outdoor station modules



A/V module with 720P camera, LAN cable

Description	Audio & video module as the heart of outdoor station.
Features	<ul style="list-style-type: none"> - HD video streaming (720P) with 130 degree angle - Super anti-fog coating and in-built heater - LED indicator for real-time status - Suitable for the disabled
Technical details	- Dimensions: 5.629" x 3.779" x 1.102"
Article no.	H851381M-S
Order no.	2TMA130160B0081



Big display module

Description	Integrated with transponder and keypad serves as big touch screen for daily operation for residential owners and visitors.
Features	<ul style="list-style-type: none"> - Intuitive operable touchscreen & Virtual keypad integrated - Advertising or Developer promotion display area - Name list / logo / physical address / logical address calling type - Opening of the door by DESFire or NFC or IC card. - Wiegand output available
Technical details	Dimensions: 5.629" x 3.779" x 0.905"
Version	(5 inch) (IC/Desfire)
Article no.	H851381DP
Order no.	2TMA130160B0082



Round pushbutton

Description	1/2/3 pushbutton for visitor to press for calling		
Features	<ul style="list-style-type: none"> - Pushbutton could be programmed as you want (switch on lighting, call indoor station or guard unit) - Bright back-lit ensures clear nameplate at night time - Opening of the door by DESFire or NFC or IC card 		
Technical details	<ul style="list-style-type: none"> - Dimensions: 3.818" x 2.834" x 0.984" - Rating current: 24 V DC, 10 mA - Operating temperature: -40 °C...+55 °C <p>For NFC version</p> <ul style="list-style-type: none"> - Rating current: 24 V DC, 40 mA 		
Version	1	2	3
Article no.	51381RP1	51381RP2	51381RP3
Order no.	2TMA130160N0003	2TMA130160N0004	2TMA130160N0005
Version	with NFC/IC -1	with NFC/IC -2	with NFC/IC -3
Article no.	51382RP1	51382RP2	51382RP3
Order no.	2TMA130160N0006	2TMA130160N0007	2TMA130160N0008



Bar pushbutton

Description	3/6 or 4/8 pushbutton for visitor to press for calling	
Features	<ul style="list-style-type: none"> - Pushbutton could be programmed as one column or double columns - Bright back-lit ensures clear nameplate at night time 	
Technical details	<ul style="list-style-type: none"> - Dimensions: 3.818" x 2.834" x 0.984" - Rating current: 24 V DC, 8 mA - Operating temperature: -40 °C...+55 °C 	
Version	3 (Bar button)	4 (Bar button)
Article no.	51381SP3	51381SP4
Order no.	2TMA130160N0001	2TMA130160N0002

Door entry system

ABB-Welcome IP - Outdoor station modules



Keypad with 1abc input

Description	Digital inputing module for keypad outdoor station		
Features	<ul style="list-style-type: none"> - Enables the opening of the door using a numerical code - 3,000 passwords can be taught in - Customized passwords are allowed - Backlight automatically on for visibility at night - Call guard unit is available 		
Technical details	<ul style="list-style-type: none"> - Dimensions: 3.818" x 2.834" x 0.984" - Rating current: 24 V DC, 20 mA - Operating temperature: -40 °C...+55 °C 		
Version	Stainless steel	White	Aluminum
Article no.	51381K-S	51381K-W	51381K-A
Order no.	2TMA130160X0001	2TMA130010W0014	2TMA210160A0009

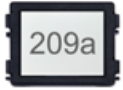


Display

Description	Display module ensure the customized message, code, and legible number always can be readed.	
Features	<ul style="list-style-type: none"> - Physical address / logical address calling type - Opening of the door by DESFire or NFC or IC card. - Wiegand output available - Up to 5000 pcs cards can be registered 	
Technical details	<ul style="list-style-type: none"> - Dimensions: 3.818" x 2.834" x 0.984" - Rating current: 24 V DC, 160 mA - Operating temperature: -40 °C...+55 °C 	
Version	IC/DES fire card	ID Card
Article no.	51382CR	51381CR
Order no.	2TMA130160N0009	2TMA130160N0010

Door entry system

ABB-Welcome IP - Outdoor station modules



Info module

Description	Info module is used to hold the address of the building or the resident directory and assembled in outdoor station
Features	- Stamped labelling foil is enclosed. - Backlight ensures clear visibility at night
Technical details	- Dimensions: 3.818" x 2.834" x 0.984" - Rating current: 24 V DC, 8 mA - Operating temperature: -40 °C...+55 °C
Version	
Article no.	51381DN
Order no.	2TMA200160N0039



Dummy module

Description	Dummy module is one blank module, support to put 3rd-party module inside, also support to future function module replacement
Features	- Maximum space inside: 2.145" x 0.370079" x 2.91339"
Technical details	- Dimensions: 3.818" x 2.834" x 0.984"
Version	
Article no.	51381DM
Order no.	2TMA200160N0040

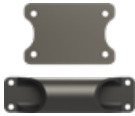
Door entry system

ABB-Welcome IP - Accessories



Cushion set for surface-mounted installation

Description	Spare part for surface mounting when the installation cable lay on the wall
Features	- Easy to installation
Technical details	Dimensions: 0.590" x 0.393" x 0.196"
Version	
Article no.	52311C
Order no.	2TMA210160W0001



Joining fixture

Description	Joining fixture used when more than one flush mounted box needs to be connected together.
Features	- Easy to integrate mounting boxes together
Technical details	Dimensions: 3.267" x 4.724" x 3.149"
Version	
Article no.	51381J
Order no.	2TMA130160B0124



Mounting tool

Description	The mounting tool use to dismount the outdoor station.
Features	- Easy to installation and removal end strip
Technical details	Dimensions: 0.551" x 6.496" x 1.023"
Version	135mm panel
Article no.	51381MT
Order no.	2TMA130160B0025



Outdoor station End-strip

Description	End strip for outdoor station cover frame.		
Features	- Easy to install and replace		
Technical details	Dimensions: 2.795" x 5.314" x 0.748"	Dimensions: 2.795" x 5.314" x 0.748"	Dimensions: 2.795" x 5.314" x 0.748"
Version	size 1/x, Stainless steel	size 1/x, White	size 1/x, Aluminum
Article no.	51381EP-S	51381EP-W	51381EP-A
Order no.	2TMA130160X0002	2TMA130160W0001	2TMA200160A0021
Technical details	Dimensions: 4.842" x 9.251" x 0.748"	Dimensions: 4.842" x 9.251" x 0.748"	Dimensions: 2.795" x 5.314" x 0.748"
Version	size 2/x, Stainless steel	size 2/x, Aluminum	
Article no.	51382EP-S	51382EP-A	
Order no.	2TMA130160X0003	2TMA200160A0023	

Additional information

We reserve the right to make technical changes or modify the contents of this document without prior notice. With regard to purchase orders, the agreed particulars shall prevail. ABB Inc. does not accept any responsibility whatsoever for potential errors or possible lack of information in this document.

We reserve all rights in this document and in the subject matter and illustrations contained therein. Any reproduction, disclosure to third parties or utilization of its contents – in whole or in parts – is forbidden without prior written consent of ABB Inc..



—
ABB Inc.
305 Gregson Drive
Cary, NC 27511
United States

More information

