
PRODUCT OVERVIEW

Harnessflex® connector interfaces

Low & high voltage connector
interfaces for heavy-duty vehicles

Harnessflex®
SPECIALIST CONDUIT SYSTEMS



Standard & high voltage connector interfaces

Providing high integrity connections

Harnessflex® works closely with many OEMs to develop protection for electrical connectors (a critical area of an engine harness).

01 **TE AMP Superseal 90°** & Harnessflex® external connector interface.

02 **TE Ampseal 16** & Harnessflex® external connector interface.

03 **EVO™ High voltage connectors** HV Connector interfaces.

Harnessflex® Connector Interfaces (or backshells as they're commonly known) offer a compact and high integrity connection between automotive connectors and all types of conduit systems. These interfaces provide complete cable protection right up to the connector. They also provide strain relief and protection from high pressure washing, helping to maintain the sealing integrity of the connector.

Features & benefits include:

1. High pull-off strength

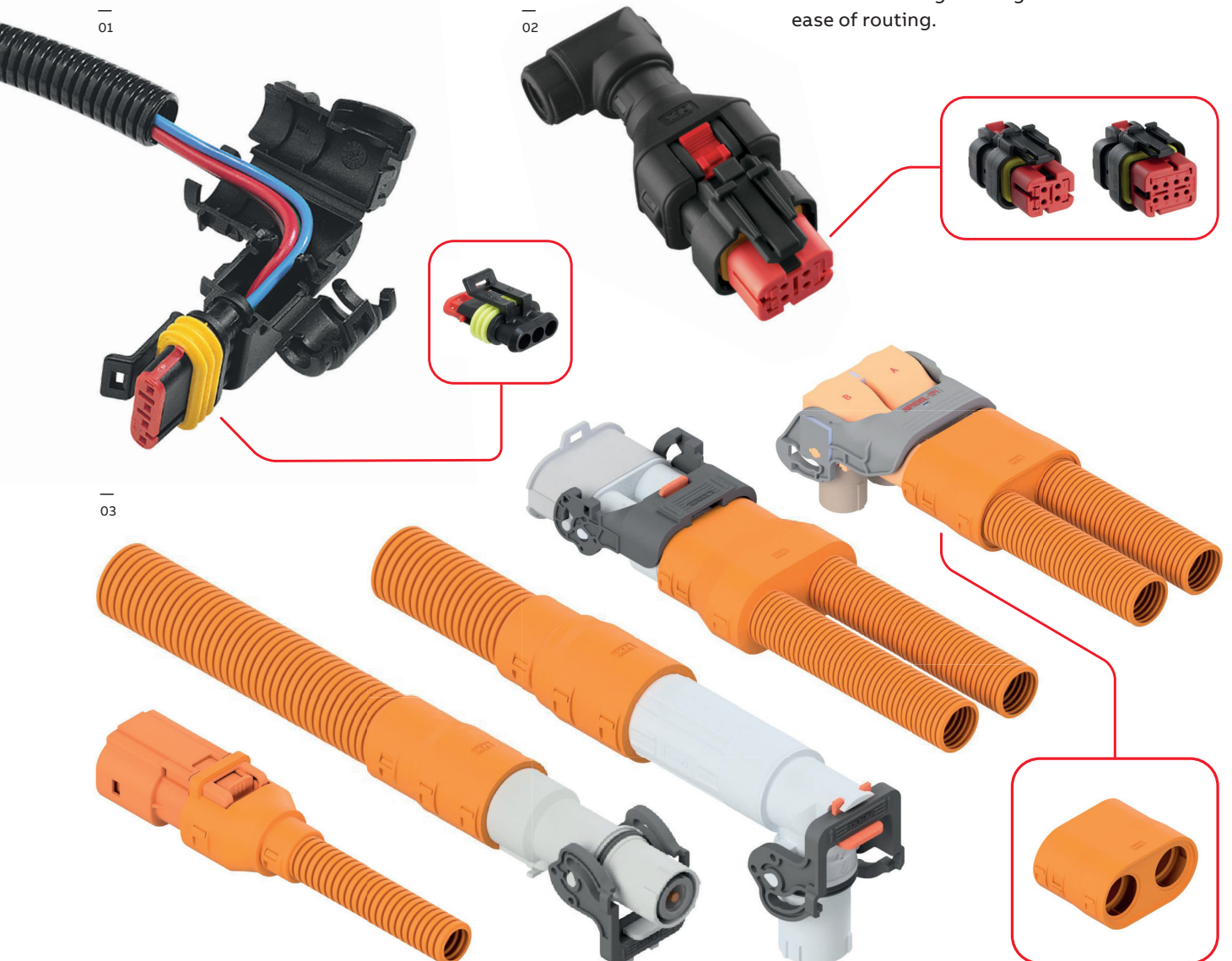
Internal conduit backstop provide insertion guide ensuring system integrity and high pull off strength.

2. Conduit size labels

Each junction indicates nominal conduit size to aid installation.

3. Straight or 90° elbow versions

Compact design ideal for use where space is limited. Allowing 360 degree rotation for ease of routing.



Harnessflex® Interconnect system

The Harnessflex Interconnect System enables easy linking between Harnessflex® fittings and connector interfaces to conduit braiding, sleeving and heat shrink.



01 Harnessflex®
Interconnect system
(example).

Compatible with Harnessflex Multi-Function Clips or Ty-Rap® cable ties, the **Harnessflex Interconnect System** is available for all conduit outlet sizes NC08 to NC40 (excluding NC10).

Without the right cable protection system in place, electric vehicles may become prone to critical electrical failure which will cause them to breakdown, resulting in timetable disruptions and repair costs.

One of the **key areas at risk** is the vital link between cable and connector. Without robust backshell protection, cables running into connectors are often left exposed, leaving them open to intrusion, excessive strain and impact damage - all of which can lead to electrical faults and vehicle failure.

Materials:

- MSA parts - Nylon (PA66)
- MSAR parts - Rubber (Sarlink)

Features & benefits:

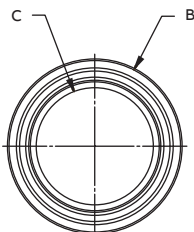
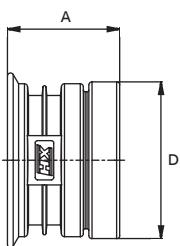
- Compatible with all Harnessflex® hinged fittings
- Compatible with all Harnessflex connector interfaces
- Can be easily secured with either Ty-Fast® cable ties or Harnessflex Multi-Function clips (see compatible parts below)
- Smooth cable entry & bore
- Easy assembly
- -40C to +120C
- CE Mark to the low voltage directive
- RoHS Compliant to 2015/863/EU
- Conforms with end of life vehicle directive (ELV) EU200/53/EC

Ty-Fast®



Harnessflex® Interconnect system

Part No. Nylon	Part No. Rubber	Compatible with	Nominal dimensions (mm)				For conduit
			A	B	C	D	(NC / NW / US)
MSA08	MSAR08	CCSB08	17.0	13.5	5.7	08 / 7.5 / ¼	
MSA10	MSAR10	CCSB10	19.5	14.3	6.3	10 / 8.5 / ⅜	
MSA12	MSAR12	CCSB12	17.8	15.7	7.6	12 / 10 / ⅜	
MSA16	MSAR16	CCSB16	17.7	18.8	10.9	16 / 13 / ⅜	
MSA20	MSAR20	CCSB20	17.5	23.9	14.5	20 / 17 / ½	
MSA25	MSAR25	CCSB25	18.2	28.3	19.0	25 / 22 / ¾	
MSA28	MSAR28	CCSB28	18.1	30.9	21.6	28 / 23 / ¾	
MSA32	MSAR32	CCSB32	19.0	36.8	27.5	32 / 29 / 1	
MSA40	MSAR40	CCSB40	21.6	44.8	33.8	40 / 36 / 1 ¼	



CONNECTOR KEY:

- 1 Amphenol PL18-G2 (Straight)
- 2 Amphenol PL28-G2 (90°)
- 3 Amphenol PL300 PL282
- 4 Amphenol PL182-G2
- 5 Amphenol PL300 (Straight)
- 6 Amphenol PL300 (90°)
- 7 TE HVA280 3P

Amphenol PL300 (Straight)		Amphenol PL300 (Straight) Continued		Amphenol PL300 (90°)		Amphenol PL300 (90°) Continued		TE HVA280 3P		
Connector	Part no.	Connector	Part no.	Connector	Part no.	Connector	Part no.	Connector	Connector	Compatible Connector Cap
PL18X-300-35-5	CI28-PL300	PL18X-301-50-5	CI25-PL300	PL28X-300-35-5	CI25-PL300	PL28X-301-50-5	CI16-HVA280-3	4-2103015-1	2103013-1	
	CI25-PL300		CI28-PL300		CI28-PL300				2103013-2	
PL18Y-300-35-5	CI28-PL300	PL18Y-301-50-5	CI25-PL300	PL28Y-300-35-5	CI25-PL300	PL28Y-301-50-5			2103013-3	
	CI25-PL300		CI28-PL300		CI28-PL300		CI16-HVA280-3	4-2103015-2	2103013-1	
PL18U-300-35-5	CI28-PL300	PL18U-301-50-5	CI25-PL300	PL28U-300-35-5	CI25-PL300	PL28U-301-50-5			2103013-2	
	CI25-PL300		CI28-PL300		CI28-PL300				2103013-3	
PL18V-300-35-5	CI28-PL300	PL18V-301-50-5	CI25-PL300	PL28V-300-35-5	CI25-PL300	PL28V-301-50-5	CI16-HVA280-3	4-2103015-3	2103013-1	
	CI25-PL300		CI28-PL300		CI28-PL300				2103013-2	
PL18W-300-35-5	CI28-PL300	PL18W-301-50-5	CI25-PL300	PL28W-300-35-5	CI25-PL300	PL28W-301-50-5			2103013-3	
	CI25-PL300		CI28-PL300		CI28-PL300		CI16-HVA280-3	4-2103015-4	2103013-1	
PL18T-300-35-5	CI28-PL300	PL18T-301-50-5	CI25-PL300	PL28T-300-35-5	CI25-PL300	PL28T-301-50-5			2103013-2	
	CI25-PL300		CI28-PL300		CI28-PL300				2103013-3	
PL18X-301-35-5	CI25-PL300	PL18X-300-50-5	CI25-PL300	PL28X-301-35-5	CI25-PL300	PL28X-300-70-5	CI16-HVA280-3	4-2103015-5	2103013-1	
	CI28-PL300	PL18Y-300-70-5	CI28-PL300		CI28-PL300	PL28Y-300-70-5			2103013-2	
PL18Y-301-35-5	CI28-PL300	PL18U-300-70-5	CI25-PL300	PL28Y-301-35-5	CI25-PL300	PL28U-300-70-5			2103013-3	
	CI28-PL300	PL18V-300-70-5	CI28-PL300		CI28-PL300	PL28V-300-70-5	CI16-HVA280-3	4-2103015-6	2103013-1	
PL18U-301-35-5	CI28-PL300	PL18W-300-70-5	CI25-PL300	PL28U-301-35-5	CI25-PL300	PL28W-300-70-5			2103013-2	
	CI28-PL300	PL18T-300-70-5	CI28-PL300		CI28-PL300	PL28T-300-70-5			2103013-3	
PL18V-301-35-5	CI28-PL300	PL18X-301-70-5	CI25-PL300	PL28V-301-35-5	CI25-PL300	PL28X-301-70-5				
	CI28-PL300	PL18Y-301-70-5	CI28-PL300		CI28-PL300	PL28Y-301-70-5				
PL18W-301-35-5	CI28-PL300	PL18U-301-70-5	CI25-PL300	PL28W-301-35-5	CI25-PL300	PL28U-301-70-5				
	CI28-PL300	PL18V-301-70-5	CI28-PL300		CI28-PL300	PL28V-301-70-5				
PL18T-301-35-5	CI28-PL300	PL18W-301-70-5	CI25-PL300	PL28T-301-35-5	CI25-PL300	PL28W-301-70-5				
	CI28-PL300	PL18T-301-70-5	CI28-PL300		CI28-PL300	PL28T-301-70-5				
PL18X-300-50-5			CI25-PL300	PL28X-300-50-5	CI25-PL300					
			CI28-PL300		CI28-PL300					
PL18Y-300-50-5			CI25-PL300	PL28Y-300-50-5	CI25-PL300					
			CI28-PL300		CI28-PL300					
PL18U-300-50-5			CI25-PL300	PL28U-300-50-5	CI25-PL300					
			CI28-PL300		CI28-PL300					
PL18V-300-50-5			CI25-PL300	PL28V-300-50-5	CI25-PL300					
			CI28-PL300		CI28-PL300					
PL18W-300-50-5			CI25-PL300	PL28W-300-50-5	CI25-PL300					
			CI28-PL300		CI28-PL300					
PL18T-300-50-5			CI25-PL300	PL28T-300-50-5	CI25-PL300					
			CI28-PL300		CI28-PL300					

EVO™ conduit systems

Type	Conduit material	Conduit weight	Slit version available	Temperature range			
				Long term static min.	Long term static max.	Short term (3000 hrs)	Short term (200 hrs)
NC	Polyamide 6	Standard	●	-40°C	+120°C	+150°C	+175°C
CTPA	Polyamide 6	Light	●	-40°C	+120°C	+135°C	+135°C
CPA	Co-Polyester	Medium	-	-50°C	+135°C	+150°C	+175°C

Harnessflex® Interconnect system

	Part No. Nylon	Part No. Rubber	
	MSA08	MSAR08	CCSB08
	MSA10	MSAR10	CCSB10
	MSA12	MSAR12	CCSB12
	MSA16	MSAR16	CCSB16
	MSA20	MSAR20	CCSB20
	MSA25	MSAR25	CCSB25
	MSA28	MSAR28	CCSB28
	MSA32	MSAR32	CCSB32
	MSA40	MSAR40	CCSB40

Harnessflex® Low voltage connector interfaces

Quick reference chart



Type	TE AMP Superseal				TE AMP Superseal 90°				TE AMP Junior & Mini timer				TE AMP Junior & Mini timer 90°			
Part no.	X-Temp™ Part no.	Interface	Connector	Part no.	X-Temp™ Part no.	Interface	Connector	Part no.	X-Temp™ Part no.	Interface	Connector	Part no.	X-Temp™ Part no.	Interface	Connector	
CI08-AS1	CIH08-AS1	1 way	282079-2*	CI08-90-AS1	CIH08-90-AS1	1 way	282079-2*	CI08-AM2	CIH08-AM2	2 way	347887-3*	CI08-90-AM2	CIH08-90-AM2	2 way	347887-3*	
CI08-AS2	CIH08-AS2	2 way	282104-2*	CI08-90-AS2	CIH08-90-AS2	2 way	282104-2*	CI08-AM3	CIH08-AM3	3 way	1-827578-1*	CI08-90-AM3	CIH08-90-AM3	3 way	1-827578-1*	
CI08-AS3	CIH08-AS3	3 way	282087-1*	CI08-90-AS3	CIH08-90-AS3	3 way	282087-1*	CI08-AM4	CIH08-AM4	4 way	281804-1*	CI08-90-AM4	CIH08-90-AM4	4 way	281804-1*	
CI08-AS4	CIH08-AS4	4 way	282088-1*	CI08-90-AS4	CIH08-90-AS4	4 way	282088-1*	CI10-AM2	CIH10-AM2	2 way	347887-3*	CI10-90-AM2	CIH10-90-AM2	2 way	347887-3*	
CI10-AS2	CIH10-AS2	2 way	282104-2*	CI10-90-AS2	CIH10-90-AS2	2 way	282104-2*	CI10-AM3	-	3 way	1-827578-1*	CI10-90-AM3	-	3 way	1-827578-1*	
CI10-AS3	CIH10-AS3	3 way	282087-1*	CI10-90-AS3	CIH10-90-AS3	3 way	282087-1*	CI10-AM4	-	4 way	281804-1*	CI10-90-AM4	-	4 way	281804-1*	
CI10-AS4	CIH10-AS4	4 way	282088-1*	CI10-90-AS4	CIH10-90-AS4	4 way	282088-1*	CI12-AM2	CIH12-AM2	2 way	347887-3*	CI12-90-AM2	-	2 way	347887-3*	
CI12-AS1	CIH12-AS1	1 way	282079-2*	CI12-90-AS2	CIH12-90-AS2	2 way	282104-2*	CI12-AM3	CIH12-AM3	3 way	1-827578-1*	CI12-90-AM3	CIH12-90-AM3	3 way	1-827578-1*	
CI12-AS2	CIH12-AS2	2 way	282104-2*	CI12-90-AS3	CIH12-90-AS3	3 way	282087-1*	CI12-AM4	CIH12-AM4	4 way	281804-1*	CI12-90-AM4	CIH12-90-AM4	4 way	281804-1*	
CI12-AS3	CIH12-AS3	3 way	282087-1*	CI12-90-AS4	CIH12-90-AS4	4 way	282088-1*									
CI12-AS4	CIH12-AS4	4 way	282088-1*													



Type	TE Econoseal				TE Econoseal Series 90°				Amphenol AT						
Part no.	X-Temp™ Part no.	Interface	Connector	Part no.	X-Temp™ Part no.	Interface	Connector	Part no.	X-Temp™ Part no.	Interface	Connector	Part no.	X-Temp™ Part no.	Interface	Connector
CI08-ES2P	-	2 way	174354-2	CI08-90-ES2P	-	2 way	174352-2	CI10-90-ES4P	-	4 way	174259-2	CI08-DT2	CIH08-DT2	2 way	AT06-2P-EC*
CI08-ES3P	-	3 way	174359-2	CI10-90-ES2P	-	2 way	174352-2	CI12-90-ES4P	-	4 way	174259-2	CI08-DT4	CIH08-DT4	4 way	AT06-4P-EC*
CI10-ES4P	-	4 way	174259-1	CI12-90-ES2P	-	2 way	174352-2	CI16-90-ES4P	-	4 way	174259-2	CI08-DT6	CIH08-DT6	6 way	AT06-6P-EC*
CI08-ES2R	-	2 way	174354-2	CI08-90-ES3P	-	3 way	174359-2	CI08-90-ES2R	-	2 way	174354-2	CI12-DT2	CIH12-DT2	2 way	AT06-2P-EC*
CI08-ES3R	-	3 way	368523-3	CI10-90-ES3P	-	3 way	174359-2	CI10-90-ES2R	-	2 way	174354-2	CI12-DT4	CIH12-DT4	4 way	AT06-4P-EC*
CI10-ES4R	-	4 way	174257-2	CI12-90-ES3P	-	3 way	282087-1*	CI12-90-ES2R	-	2 way	174354-2	CI12-DT6	CIH12-DT6	6 way	AT06-6P-EC*
								CI08-90-ES3R	-	3 way	2822390-1	CI12-DT8	CIH12-DT8	8 way	AT06-8P-EC*
								CI10-90-ES3R	-	3 way	2822390-1	Amphenol AT 90°			
								CI12-90-ES3R	-	3 way	2822390-1	CI08-90-DT2	CIH08-90-DT2	2 way	AT06-2P-EC*
								CI10-90-ES4R	-	4 way	174259-2	CI08-90-DT4	CIH08-90-DT4	4 way	AT06-4P-EC*
								CI12-90-ES4R	-	4 way	174259-2	CI08-90-DT6	CIH08-90-DT6	6 way	AT06-6P-EC*
								CI16-90-ES4R	-	4 way	174259-2	CI12-90-DT2	CIH12-90-DT2	2 way	AT06-2P-EC*
												CI12-90-DT4	CIH12-90-DT4	4 way	AT06-4P-EC*
												CI12-90-DT6	CIH12-90-DT6	6 way	AT06-6P-EC*
												CI12-90-DT8	CIH12-90-DT8	8 way	AT06-8P-EC*
												CI16-90-DT8	CIH16-90-DT8	8 way	AT06-8SP-EC*



Type	FCI Automotive Apex 2.8				FCI Automotive				Bosch Compact				Aptiv Series			
Part no.	X-Temp™ Part no.	Interface	Connector	Part no.	X-Temp™ Part no.	Interface	Connector	Part no.	X-Temp™ Part no.	Interface	Connector	Part no.	X-Temp™ Part no.	Interface	Connector	
CI08-FCI02	CIH08-FCI02	2 way	10757671	CI08-90-FCI02	CIH08-90-FCI02	2 way	10757671	CI08-BC2	CIH08-BC2	2 Way	1 928 403 137	CI08-DE001	-	3 way	-	
CI08-FCI03	CIH08-FCI03	3 way	15394689	CI08-90-FCI03	CIH08-90-FCI03	3 way	15394689	CI08-BC3	CIH08-BC3	3 Way	1 928 403 110	CI08-MP2	-	2 way	12162194	
CI08-FCI04	CIH08-FCI04	4 way	15425692	CI08-90-FCI04	CIH08-90-FCI04	4 way	15425692	CI08-BC4	CIH08-BC4	4 Way	1 928 403 112	CI08-MP3	-	3 way	12129615/12110293*	
CI12-FCI02	CIH12-FCI02	2 way	10757671	CI12-90-FCI02	CIH12-90-FCI02	2 way	10757671	CI12-BC2	CIH12-BC2	2 Way	1 928 403 137	CI08-MMP2	-	2 way	12162852	
CI12-FCI03	CIH12-FCI03	3 way	15394689	CI12-90-FCI03	CIH12-90-FCI03	3 way	15394689	CI12-BC3	CIH12-BC3	3 Way	1 928 403 110	CI08-WP2	-	2 way	12052613/12065863*	
CI12-FCI04	CIH12-FCI04	4 way	15425692	CI12-90-FCI04	CIH12-90-FCI04	4 way	15425692	CI12-BC4	CIH12-BC4	4 Way	1 928 403 112	CI08-PTD2	-	2 way	15397337	
CI12-FCI14	CIH12-FCI14	14 way	10757674	CI08-90-FCI14	CIH08-90-FCI14	14 way	10757674	CI28-BC40	CIH28-BC40	40 Way	1 928 404 777	CI08-GT153	-	3 way	15336121	
CI16-FCI14	CIH16-FCI14	14 way	10757674	CI12-90-FCI14	CIH12-90-FCI14	14 way	10757674	Bosch Compact 90°				16-GT284	-	4 way	13521459	
16-FCI14	H16-FCI14	14 way	54201415	CI16-90-FCI14	CIH16-90-FCI14	14 way	10757674	CI08-90-BC2	CIH08-90-BC2	2 Way	1 928 403 137	CI08-GT150SF-2	-	2 way	13520101	
CI16-FCI06	CIH16-FCI06	6 way	15430633	CI20-90-FCI14	CIH20-90-FCI14	14 way	10757674	CI08-90-BC3	CIH08-90-BC3	3 Way	1 928 403 110					
CI17-FCI10	CIH17-FCI10	10 way	15425612					CI08-90-BC4	CIH08-90-BC4	4 Way	1 928 403 112					
CI25-FCI50	-	50 way	10867079					CI12-90-BC2	CIH12-90-BC2	2 Way	1 928 403 137					
								CI12-90-BC3	CIH12-90-BC3	3 Way	1 928 403 110					
								CI12-90-BC4	CIH12-90-BC4	4 Way	1 928 403 112					



LOW VOLTAGE CONNECTOR INTERFACES REFERENCE CHART

CONNECTOR KEY:

- 1 TE Amp Superseal
- 5 TE AMPSEAL 16
- 10 TE/Deutsch - DT Series
- 14 FCI Automotive Apex 2.8
- 18 Aptiv Series 90°
- 2 TE AMP Superseal 90°
- 6 7 TE AMPSEAL 16 90°
- 11 TE/Deutsch - DT Series 90°
- 15 FCI Automotive Apex 2.8 90°
- 18 Kostal
- 3 TE AMP Junior & Mini timer
- 8 TE Econoseal
- 12 TE/Deutsch - DRC50 Series
- 15 Bosch Compact
- 19 Kostal 90°
- 4 TE AMP Junior & Mini timer 90°
- 9 TE Econoseal 90°
- 13 Heavy Duty Series
- 16 Bosch Compact 90°
- 20 Kostal SLK Series 90°
- * All colour and wire variants - for full list of connector references, please visit the main part pages.
- 17 Aptiv Series
- 21 Sumitomo



TE AMPSEAL 16

Part no.	X-Temp™ Part no.	Interface	Connector
CI08-AT2PL	CIH08-AT2PL	2 way	776428-3*
CI08-AT3PL	CIH08-AT3PL	3 way	776523-1*
CI08-AT4PL	CIH08-AT4PL	4 way	776487-1*
CI12-AT4PL	CIH12-AT4PL	4 way	776487-1*
CI12-AT6PL	CIH12-AT6PL	6 way	776434-3*
CI12-AT8PL	CIH12-AT8PL	8 way	776494-3*
CI12-AT12PL	CIH12-AT12PL	12 way	776437-4*
CI16-AT8PL	CIH16-AT8PL	8 way	776494-1*
CI16-AT12PL	CIH16-AT12PL	12 way	776533-1*

TE AMPSEAL 16 90°

Part no.	X-Temp™ Part no.	Interface	Connector
CI08-90-AT2PL	CIH08-90-AT2PL	2 way	776428-3*
CI08-90-AT3PL	CIH08-90-AT3PL	3 way	776523-1*
CI08-90-AT4PL	CIH08-90-AT4PL	4 way	776487-1*
CI12-90-AT2PL	CIH12-90-AT2PL	2 way	776428-3*
CI12-90-AT3PL	CIH12-90-AT3PL	3 way	776523-1*
CI12-90-AT4PL	CIH12-90-AT4PL	4 way	776487-1*

TE AMPSEAL 16 90°

Part no.	X-Temp™ Part no.	Interface	Connector
CI08-90-AT2LP	CIH08-90-AT2LP	2 way	776427-1*
CI08-90-AT2LR	CIH08-90-AT2LR	2 way	776428-1*
CI08-90-AT3LP	CIH08-90-AT3LP	3 way	776523-1*
CI08-90-AT3LR	CIH08-90-AT3LR	3 way	776430-1*
CI08-90-AT4LP	CIH08-90-AT4LP	4 way	776524-3*
CI08-90-AT4LR	CIH08-90-AT4LR	4 way	776488-1*
CI08-90-AT6LP	CIH08-90-AT6LP	6 way	776433-1*
CI08-90-AT6LR	CIH08-90-AT6LR	6 way	776434-1*

TE AMPSEAL 16 90°

Part no.	X-Temp™ Part no.	Interface	Connector
CI12-90-AT2LP	CIH12-90-AT2LP	2 way	776427-1*
CI12-90-AT2LR	-	2 way	776428-1*
CI12-90-AT3LP	CIH12-90-AT3LP	3 way	776523-1*
CI12-90-AT3LR	CIH12-90-AT3LR	3 way	776430-1*
CI12-90-AT4LP	-	4 way	776524-3*
CI12-90-AT4LR	-	4 way	776488-1*
CI12-90-AT6LP	CIH12-90-AT6LP	6 way	776433-1*
CI12-90-AT6LR	-	6 way	776434-1*
CI16-90-AT4LP	-	4 way	776524-3*
CI16-90-AT4LR	-	4 way	776488-1*
CI16-90-AT6LP	-	6 way	776433-1*
CI16-90-AT6LR	-	6 way	776434-1*



TE/Deutsch - DT Series

Part no.	X-Temp™ Part no.	Interface	Connector
CI08-DT2	CIH08-DT2	2 way	DT06-2S-E005
CI08-DT3	CIH08-DT3	3 way	DT06-3S-E005
CI08-DT4	CIH08-DT4	4 way	DT06-4S-E005
CI08-DT6	CIH08-DT6	6 way	DT06-6S-E005
CI12-DT2	CIH12-DT2	2 way	DT06-2S-E005
CI12-DT3	CIH12-DT3	3 way	DT06-3S-E005
CI12-DT4	CIH12-DT4	4 way	DT06-4S-E005
CI12-DT6	CIH12-DT6	6 way	DT06-6S-E005
CI12-DT8	CIH12-DT8	8 way	DT06-8SA-E005
CI16-DT12	CIH16-DT12	12 way	DT06-12SA-E005

TE/Deutsch - DT Series 90°

Part no.	X-Temp™ Part no.	Interface	Connector
CI08-90-DT2	CIH08-90-DT2	2 way	DT06-2S-E005
CI08-90-DT3	CIH08-90-DT3	3 way	DT06-3S-E005
CI08-90-DT4	CIH08-90-DT4	4 way	DT06-4S-E005
CI08-90-DT6	CIH08-90-DT6	6 way	DT06-6S-E005
CI12-90-DT2	CIH12-90-DT2	2 way	DT06-2S-E005
CI12-90-DT3	CIH12-90-DT3	3 way	DT06-3S-E005
CI12-90-DT4	CIH12-90-DT4	4 way	DT06-4S-E005
CI12-90-DT6	CIH12-90-DT6	6 way	DT06-6S-E005
CI12-90-DT8	CIH12-90-DT8	8 way	DT06-8SA-E005
CI12-90-DT12	CIH12-90-DT12	12 way	DT06-12SA-E005
CI16-90-DT8	CIH16-90-DT8	8 way	DT06-8SA-E005
CI16-90-DT12	CIH16-90-DT12	12 way	DT06-12SA-E005

TE/Deutsch - DRC50 Series

Part no.	X-Temp™ Part no.	Interface	Connector
CI122812-DRC50	-	-	DRC26-50S0*
CI201220-DRC50	-	-	DRC26-50S0*
CI202820-DRC50	-	-	DRC26-50S0*
CI251225-DRC50	-	-	DRC26-50S0*
CI252825-DRC50	-	-	DRC26-50S0*



Heavy Duty Series

Part no.	Interface	Connector
CI08-HDSCS-B	-	1-1418469-1
CI12-HDSCS-B	-	1-1418469-1
CI20-HDSCS-E	-	1-1563759-1/1-1564337-1
CI20-F90-HDSCS-E	-	1-1563759-1/1-1564337-1

TE/Deutsch - DTP04 Series 90°

Part no.	X-Temp™ Part no.	Interface	Connector
CI12-90-DTP04	-	-	DTP06-4S-CE02
16-90-DTP04	-	-	DTP06-4S-E004

* Both PN's fit the following connector references: DTP06-4S, DTP06-4S-CE015, DTP06-4S-CE02 and DTP06-4S-E004.



Aptiv Series 90°

Part no.	X-Temp™ Part no.	Interface	Connector
CI08-90-DE001	-	3 way	-
CI08-90-MP2	-	2 way	12162194
CI08-90-MP3	-	3 way	12129615/12110293*
CI08-90-MMP2	-	2 way	12162852
CI12-90-MP2	-	2 way	12162194
CI12-90-MP3	-	3 way	12129615/12110293*
CI12-90-MMP2	-	2 way	12162852
CI08-90-WP2	-	2 way	12052613/12065863*
CI12-90-WP2	-	2 way	12052613/12065863*
CI08-90-PTD2	-	2 way	15397337
CI12-90-PTD2	-	2 way	15397337
CI08-90-GT153	-	3 way	15336121
CI12-90-GT153	-	3 way	15336121
CI12-90-GT284	-	3 way	15326631
CI16-90-GT284	-	3 way	15326631

Kostal

Part no.	X-Temp™ Part no.	Interface	Connector
CI16-LK20	-	20 way	09432001
PG21-LK20	-	20 way	09432001
CI08-SLK28-2	-	2 way	-
CI08-SLK28-3	-	3 way	9441391
-	CIH12-MLK04	4 way	10092979

Kostal Series 90°

Part no.	X-Temp™ Part no.	Interface	Connector
CI08-90-SLK28-2	-	2 way	-
CI08-90-SLK28-3	-	3 way	9441391
CI12-90-SLK28-4	-	4 way	-
-	CIH12-90-MLK04	4 way	10092979



Sumitomo

Part no.	X-Temp™ Part no.	Interface	Connector
CI08-SU4	-	4 way	6098-0144-B*
CI08-90-SU4	-	4 way	6098-0144-B*
CI08-X2SU4	-	4 way	6195-0030**
CI08-90-X2SU4	-	4 way	6195-0030**
CI12-SU10	-	10 way	6189-1134

* Original connector. ** New version of connector.

* Both connectors need to be fitted with TPA 1205 2845.

DIN 72585

Part no.	X-Temp™ Part no.	Interface	Connector
CI08-72585	-	4 way	1-967325-1



ABB Cable Management Products Ltd

CMG House
Station Road
Coleshill
Birmingham B46 1HT
Tel: +44 (0) 1675 468 200

For Sales Support contact:

gb-cmg.salessupport@abb.com

For Technical Support contact:

cmg.conduitsystems@abb.com

For Sample Support contact:

gb-sample-requests@abb.com

harnessflex.com