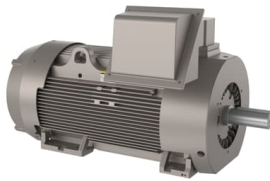




 PRODUCT-DETAILS

ECR93006TR-4

Severe Duty Motor 300 Hp 460 V (ECR93006TR-4)



General Information

Global Commercial Alias	ECR93006TR-4
Product ID	7BECR93006TR-4
ABB Type Designation	300HP, 1190RPM, 3PH, 60HZ, L 449T, A4419
Catalog Description	Severe Duty Motor 300 Hp 460 V (ECR93006TR-4)

Additional Information

ABB Type Designation	300HP, 1190RPM, 3PH, 60HZ, L 449T, A4419
Ambient Temperature	40 °C
Bearing	0.000
Bearing NDE	6318 Ball
Brake Present	No
Brand / Label	Baldor-Reliance
Catalog Number	ECR93006TR-4
Certification Agency	CSA EEV
Country of Origin	United States (US)
Customs Tariff Number	85015381
Dimension Diagram	617423-218

Drive End Flange Type	Standard
Duty Time	60 Min
ETIM 7	EC001851 - Electric motor
Efficiency Level	Premium Efficiency (NEMA 12-12)

Electrical Data

Current	Freq	Power	Speed	Voltage
381 A	60 Hz	300 Hp	1190 r/min	460 V

Enclosure Type	TEFC
Frame Material	Iron
Frame Size	449
Frequency (f)	60 Hz
Global Commercial Alias	ECR93006TR-4
Gross Volume	202125 in ³
Gross Weight	3683 lb
IDEA Granular Category Code (IGCC)	1328 >> Multi phase motor AC
Insulation Class	F
Invoice Description	300HP,1190RPM,3PH,60HZ,L 449T,A44192M,TE
Made To Order	No
Maximum Speed	3000 r/min
Medium Description	Crusher Severe Duty, 300 HP, 1200 RPM, Frame Size L449T, Standard Mounting, 3 Phase, TEFC Enclosure, 460 V, 60 Hz (ECR93006TR-4)
Minimum Order Quantity	1 piece
Motor Base Type	Foot Mounted
Motor Frame Prefix	L
Motor Frame Size	L449T
Motor Frame Suffix	T
Mounting Orientation	Horizontal
Mounting Position	F1
NEMA Design Code	A
Number of Phases	3
Number of Poles	6
Number of Poles (High)	6
Number of Speeds	Single Speed
Order Multiple	1 piece
Output Power	300 Hp
Power Factor	77 %
Product Name	Crusher Severe Duty
Product Net Depth / Length	70 in
Product Net Height	52.5 in
Product Net Weight	3683 lb
Product Net Width	55 in
Product Type	Undefined
Quote Only	No
Rated Current (I _n)	381 A
Rated Efficiency	95.80 %
Rated Speed	1190 r/min
Replaced Product ID (OLD)	7BP44G1820
Selling Unit of Measure	piece
Service Factor	1.15
Shaft Diameter	3.38 in
Short Description	300 HP, 1200 RPM, Frame Size L449T, Standard, 3 PH, TEFC, 460 V
Standards	NEMA
Starting of Motor	Direct On Line
Stocked At (Warehouses)	China Alabama, United States Alaska, United States

	1200 r/min
Type of Duty	Continuous
UNSPSC	26101115
Voltage Rating	460 V

Categories

Motors and Generators → NEMA Low Voltage AC Motors → Severe Duty Motors → Crusher Duty Motors

