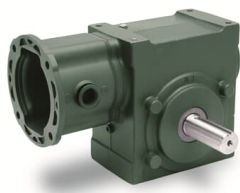




 PRODUCT-DETAILS

23A10R14HD

23A10R14 TIGEAR-2 RED W/ HARSH DUTY OUTP



General Information

Global Commercial Alias	23A10R14HD
Product ID	7B23A10R14HD
ABB Type Designation	23A10R14 TIGEAR-2 RED W/ HARSH DUTY
Catalog Description	23A10R14 TIGEAR-2 RED W/ HARSH DUTY OUTP

Additional Information

Case Size	23
Nominal Ratio	10
Output	Right
Input Style	3-Piece Coupled
Suitable for Washdown Environment	No
Housing Material	Cast Iron
Paint Type	Standard
Product Compatibility	NEMA Motor, 140TC Frame

Sealing and Lubrication

Sealing Type	Two-Piece Harsh Duty
Lubrication	PAG, Standard Temperature

Technical

Horsepower Rating	Input 3.42 Hp Output 3.07 Hp
Rated Torque	Output 1106 in-lb
Thermal Horsepower Rating	4.4 Hp

Dimensions

Shaft Diameter	Output 1.125 in
Shaft Length	Output 2.18 in
Center Distance	2.31 in
Overhung Load	1610 lbf

Categories

Mechanical Power Transmission → Gearing → Right-Angle Worm → Tigear-2 (EZ Kleen) → Accessories → Riser Blocks

