



PRODUCT-DETAILS

2CSK0303CH

frame, 3 modules, STONE 1-gang(s) Grey - Chiara



General Information

Product ID	2CSK0303CH
EAN	8012542010456
Catalog Description	frame, 3 modules, STONE 1-gang(s) Grey - Chiara
Long Description	Chiara, ,frame, 3 modules, STONE ,2CSK0304CH

Installation

Instructions and Manuals	2CSC600290D0201
Type of Fastening	Clamp
Mounting Orientation	Horizontal

Environmental

Degree of Protection	IP20
----------------------	------

Technical

Data Sheet, Technical Information	2CSC600290D0201
Number of Gangs	1
Illumination	Non-illuminated

Design

Design Range	Chiara
Surface Finishing	Basic
Material	Thermoplastic Plastic
Label Space Provided	Yes
Color	Grey

Dimensions

Width in Number of Modular Spacings	3
Product Net Width	119 mm
Product Net Height	92 mm
Product Net Depth / Length	11.5 mm
Product Net Weight	0.002 kg

Material Compliance

Conflict Minerals Reporting Template (CMRT)	9AKK108468A3363
---	-----------------

Certificates and Declarations

Declaration of Conformity - CE	9AKK108467A8340
--------------------------------	-----------------

Classifications

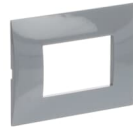
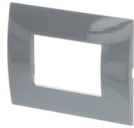
ETIM 9	EC000007 - Cover frame for domestic switching devices
WEEE Category	Product Not in WEEE Scope
WEEE B2C / B2B	Business To Consumer

Categories

Low Voltage Products and Systems → Building and Home Automation Solutions → free@home → User Operation

Low Voltage Products and Systems → Building and Home Automation Solutions → KNX → User Operation

Low Voltage Products and Systems → Wiring Accessories - Light Switch Ranges → Frames



360°