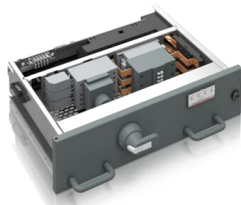




PRODUCT-DETAILS

MStart

Withdrawable Motor Starter for MNSiS



General Information

Extended Product Type	MStart
Product ID	1TGE252021M4100
Catalog Description	Withdrawable Motor Starter for MNSiS
Long Description	Withdrawable Motor Starter for MNSiS (6E, Circuit Breaker), Rated Voltage [V]= 400, Short-Circuit Current [kA]= 65, Rated Power [kW]= 45, Rated Current[A]= 80

Dimensions

Product Net Width	600 mm
Product Net Height	150 mm
Product Net Depth / Length	465 mm

Certificates and Declarations

Declaration of Conformity - CE	1TGE097001
--------------------------------	------------

Popular Downloads

Data Sheet, Technical Information	1TGC910001B0204 1TGC910809M0202
-----------------------------------	------------------------------------

Classifications

WEEE Category	Product Not in WEEE Scope
---------------	---------------------------

Additional Information

Product Main Type	DOL (3-pole, heavy duty)
-------------------	--------------------------

Categories

Low Voltage Products and Systems → Low Voltage Systems → IEC - Low Voltage Motor Control Centers → MNS iS
Low Voltage Products and Systems → Service → Spares and Consumables → Parts

