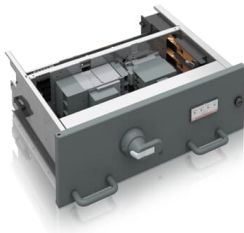




PRODUCT-DETAILS

# MStart

## Withdrawable Energy Distribution for MNSiS



General Information	
Extended Product Type	MStart
Product ID	1TGE106301D5200
ABB Type Designation	-
Catalog Description	Withdrawable Energy Distribution for MNSiS
Long Description	Withdrawable Energy Distribution for MNSiS (8E, Circuit Breaker), Rated Voltage [V]= 500, Short-Circuit Current [kA]= 50, Rated Power [kW]= -, Rated Current[A]= 200

Technical	
Part Type	New
Product Type	Undefined
Frame Size	Undefined

Dimensions	
Product Net Weight	0 kg

---

### Certificates and Declarations

---

Declaration of Conformity - CE	1TGE097001
--------------------------------	------------

---

---

### Popular Downloads

---

Data Sheet, Technical Information	1TGC910001B0204 1TGC910809M0202
-----------------------------------	------------------------------------

---

---

### Classifications

---

WEEE Category	Product Not in WEEE Scope
---------------	---------------------------

---

---

### Additional Information

---

Product Main Type	CFeed (3-pole)
-------------------	----------------

---

---

### Categories

---

Low Voltage Products and Systems → Low Voltage Systems → IEC - Low Voltage Motor Control Centers → MNS iS  
Low Voltage Products and Systems → Low Voltage Systems → IEC - Low Voltage Motor Control Centers → MNS iS  
Low Voltage Products and Systems → Service → Spares and Consumables → Parts

