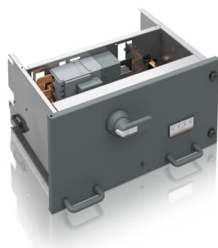




 PRODUCT-DETAILS

MStart

Withdrawable Motor Starter for MNSiS



General Information

Extended Product Type	MStart
Product ID	1TGE106222K6100
ABB Type Designation	-
Catalog Description	Withdrawable Motor Starter for MNSiS
Long Description	Withdrawable Motor Starter for MNSiS (12E, Circuit Breaker), Rated Voltage [V]= 690, Short-Circuit Current [kA]= 65, Rated Power [kW]= 15, Rated Current[A]= 17

Technical

Part Type	New
Product Type	Undefined
Frame Size	Undefined

Dimensions

Product Net Weight	34.6 kg
--------------------	---------

Certificates and Declarations

Declaration of Conformity - CE	1TGE097001
--------------------------------	------------

Popular Downloads

Data Sheet, Technical Information	1TGC910001B0204 1TGC910809M0202
-----------------------------------	------------------------------------

Classifications

WEEE Category	Product Not in WEEE Scope
---------------	---------------------------

Additional Information

Product Main Type	RDOL (3-pole)
-------------------	---------------

Categories

Low Voltage Products and Systems → Low Voltage Systems → IEC - Low Voltage Motor Control Centers → MNS iS
Low Voltage Products and Systems → Low Voltage Systems → IEC - Low Voltage Motor Control Centers → MNS iS
Low Voltage Products and Systems → Service → Spares and Consumables → Parts

