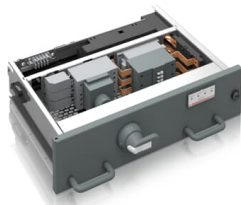




 PRODUCT-DETAILS

MStart

Withdrawable Contactor Feeder for MNSiS



General Information

Extended Product Type	MStart
Product ID	1TGE106180L4100
ABB Type Designation	-
Catalog Description	Withdrawable Contactor Feeder for MNSiS
Long Description	Withdrawable Contactor Feeder for MNSiS (6E, Circuit Breaker), Rated Voltage [V]= 400, Short-Circuit Current [kA]= 50, Rated Power [kW]= -, Rated Current[A]= 100

Technical

Part Type	New
Product Type	Undefined
Frame Size	Undefined

Dimensions

Product Net Weight	0 kg
--------------------	------

Certificates and Declarations

Declaration of Conformity - CE	1TGE097001
--------------------------------	------------

Popular Downloads

Data Sheet, Technical Information	1TGC910001B0204 1TGC910809M0202
-----------------------------------	------------------------------------

Classifications

WEEE Category	Product Not in WEEE Scope
---------------	---------------------------

Additional Information

Product Main Type	CFeed (3-pole)
-------------------	----------------

Categories

[Low Voltage Products and Systems](#) → [Low Voltage Systems](#) → [IEC - Low Voltage Motor Control Centers](#) → [MNS iS](#)
[Low Voltage Products and Systems](#) → [Low Voltage Systems](#) → [IEC - Low Voltage Motor Control Centers](#) → [MNS iS](#)
[Low Voltage Products and Systems](#) → [Service](#) → [Spares and Consumables](#) → [Parts](#)

