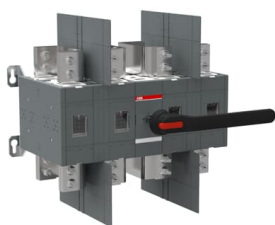




PRODUCT-DETAILS

OT1600U22P**OT1600U22P SWITCH-DISCONNECTOR****General Information**

Extended Product Type	OT1600U22P
Product ID	1SCA144211R1001
EAN	6417019724539
Catalog Description	OT1600U22P SWITCH-DISCONNECTOR
Long Description	4-pole, front operated, base mounted non-fusible disconnect switch with black IP65 handle and shaft, terminal bolt kit included

Circular Value

End of Life Instructions	1SCC301120M0201
--------------------------	-----------------

Eco Transparency

Environmental Product Declaration - EPD	1SCC301300D0201
---	-----------------

Material Compliance

Conflict Minerals Reporting Template (CMRT)	9AKK108467A5658
REACH Declaration	1SCC011021D0201
RoHS Information	1SCC011020D0201
RoHS Status	Following EU Directive 2011/65/EU and Amendment 2015/863 July 22, 2019
Toxic Substances Control Act - TSCA	1SCC011025D0201

Ordering

Minimum Order Quantity	1 piece
Customs Tariff Number	85365080
Country of Origin	Finland (FI)

Popular Downloads

Data Sheet, Technical Information	1SCC301020C0201
Instructions and Manuals	1SCC301094M0203
Environmental Product Declaration - EPD	1SCC301300D0201
End of Life Instructions	1SCC301120M0201

Dimensions

Product Net Width	570 mm
Product Net Height	546 mm
Product Net Depth / Length	335 mm
Product Net Weight	69.6 kg

Technical

Conventional Thermal Current (I_{the})	Fully Enclosed 1600 A
Rated Impulse Withstand Voltage (U_{imp})	12 kV
Rated Operational Voltage	Main Circuit 1000 V
Rated Short-time Withstand Current Low Voltage (I_{cw})	for 1 s 50 kA
Power Loss	at Rated Operating Conditions per Pole 96 W
Pollution Degree	3
Handle Color	Black
Handle Type	Handle and shaft included
Fourth Pole Position	Right Side
Fourth Pole Type	Switched - Simultaneous Function
Switches Operating Mechanism	Mechanism Between the Poles 22 (Between the Poles)
Distance Between	Standard

Phases

Position of Line Terminals	Top In - Bottom Out Bottom In - Top Out
Operating Mode	Front operated
Standards	UL 98 / CSA C22.2 NO.4
Special Functions	No
Mounting Type	Base mounting
Number of Poles	4
Degree of Protection	Front IP00
Terminal Type	Lug terminals
Tightening Torque	acc. IEC 60947-1 56 N·m
Mechanical Durability	2500
Lock Type	Yes

Technical UL/CSA

Maximum Operating Voltage UL/CSA	600 V
Ampere Rating	1600 A
Tightening Torque	acc. IEC 60947-1 56 N·m
Tightening Torque UL/CSA	500 in·lb

Certificates and Declarations

ATEX Certificate	No certification needed
cUL Certificate	cULus certificate OT1600-2000
Declaration of Conformity - CE	No declaration needed
UL Certificate	cULus certificate OT1600-2000
VDE Certificate	No certification needed

Container Information

Package Level 1 Units	box 1 piece
Package Level 1 Width	444 mm
Package Level 1 Depth / Length	714 mm
Package Level 1 Height	385 mm
Package Level 1 Gross Weight	72.8 kg
Package Level 1 EAN	6417019724539

Classifications

Object Classification Code	Q
ETIM 8	EC000216 - Switch disconnecter
ETIM 9	EC000216 - Switch disconnecter (low voltage)
eClass	V11.1 : 27371403
WEEE Category	4. Large Equipment (Any External Dimension More Than 50 cm)

Categories

Low Voltage Products and Systems → Switches → Switch Disconnectors

