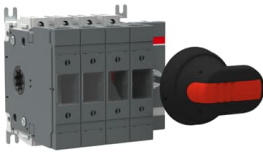




 PRODUCT-DETAILS

OS63GB40N1P

OS63GB40N1P SWITCH FUSE



General Information

Extended Product Type	OS63GB40N1P
Product ID	1SCA124973R1001
EAN	6417019552705
Catalog Description	OS63GB40N1P SWITCH FUSE
Long Description	Switch Fuses,Front Operated,4-pole,40 (Right Side),British Standard,A2-A3,Handle and shaft included,Switched - With Solid Link

Circular Value

Group Waste to Landfill Target	UL 2799 Zero Waste To Landfill Validation available
--------------------------------	---

Eco Transparency

Environmental Product Declaration - EPD	1SCC311195D0201
---	-----------------

Material Compliance

Conflict Minerals Reporting Template (CMRT)	9AKK108467A5658
REACH Declaration	1SCC011021D0201
RoHS Information	1SCC011020D0201
RoHS Status	Following EU Directive 2011/65/EU and Amendment 2015/863 July 22, 2019
Toxic Substances Control Act - TSCA	1SCC011025D0201

Ordering

Minimum Order Quantity	1 piece
Customs Tariff Number	85365080
Country of Origin	Finland (FI)

Popular Downloads

Data Sheet, Technical Information	1SCC311013C0201
Instructions and Manuals	1SCC311036M0212
Environmental Product Declaration - EPD	1SCC311195D0201

Dimensions

Product Net Width	136 mm
Product Net Height	112 mm
Product Net Depth / Length	109 mm
Product Net Weight	1.4 kg 3 lb

Technical

Rated Operational Current AC-21A (I_e)	(500 V) 63 A (690 V) 63 A
Rated Operational Current AC-22A (I_e)	(500 V) 63 A (690 V) 63 A
Rated Operational Current AC-23A (I_e)	(500 V) 63 A (690 V) 63 A
Rated Operational Power AC-23A (P_e)	(220 ... 240 V) 18.5 kW (400 V) 30 kW (415 V) 30 kW (500 V) 37 kW (690 V) 55 kW
Conventional Free-air Thermal Current (I_{th})	$\Theta = 40^\circ\text{C}$ 63 A
Conventional Thermal Current (I_{the})	Fully Enclosed 63 A
Rated Impulse Withstand Voltage (U_{imp})	12 kV
Rated Insulation Voltage (U_i)	1000 V
Rated Operational Voltage	Main Circuit 690 V AC
Rated Short-time Withstand Current Low Voltage (I_{cw})	for 1 s 2.5 kiloampere rms
Rated Conditional Short-Circuit Current (I_{nc})	(690 V) 80 kA

Power Loss	at Rated Operating Conditions per Pole 4 W
Pollution Degree	3
Handle Type	Pistol handle and shaft included
Fourth Pole Position	Left Side
Fourth Pole Type	Switched - With Solid Link
Switches Operating Mechanism	40 (Right Side)
Position of Line Terminals	Top In - Bottom Out, Bottom In - Top Out
Fuse Size	A2-A3
Fuse System	British Standard
Operating Mode	Front Operated
Standards	IEC 60947-3
Mounting Type	Base mounting
Number of Poles	4
Connecting Capacity	Stranded 2.5 ... 25 mm ² Flexible 2.5 ... 25 mm ²
Cable Cross-Section	2.5 ... 25 mm ²
Wire Stripping Length	Main Circuit 12 mm Main Circuit 0.47 in
Terminal Type	Screw Terminals
Tightening Torque	3 N·m 4 N·m
Rated Current (I _n)	Main Circuit 63 A

Technical UL/CSA

Wire Stripping Length	Main Circuit 12 mm Main Circuit 0.47 in
Tightening Torque	3 N·m 4 N·m

Certificates and Declarations

A2L Certificate - IEC	1SCC311208D0201
ATEX Certificate	No certification needed
CCC Certificate	CCC OS32-63G_2016.pdf
Declaration of Conformity - CE	1SCC311136D2703
DNV GL Certificate	1SCC311125D0203
UL Certificate	No certification needed

Container Information

Package Level 1 Units	box 1 piece
Package Level 1 Width	170 mm 6.7 in
Package Level 1 Depth / Length	190 mm 7.5 in
Package Level 1 Height	145 mm 5.7 in
Package Level 1 Gross Weight	1.5 kg 3.3 lb
Package Level 1 EAN	6417019552705

Classifications

Object Classification Code	Q
ETIM 8	EC001040 - Fuse switch disconnecter
ETIM 9	EC001040 - Fuse switch disconnecter

UNSPSC

39122233

IDEA Granular Category
Code (IGCC)

5291 >> Fuse switch disconnecter

eClass

V11.1 : 27371401

WEEE Category

5. Small Equipment (No External Dimension More Than 50 cm)

Categories

Low Voltage Products and Systems → Switches → Switch Fuses

