

SPECIFICATIONS

PCMCIA Socket Connector

Mechanical

Mating Force: 0.68Kg (1.50Lb) min. and 4Kg (8.82 Lb) max.
Unmating Force: 0.68Kg (1.50Lb) min.

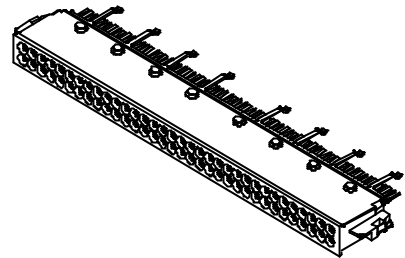
Electrical

Current Rating: 0.5A
Contact Resistance: 40mW max.
Dielectric Withstanding Voltage: 500V
Insulation Resistance: 1000MW min.

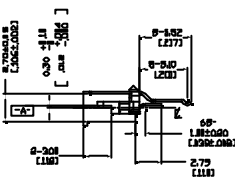
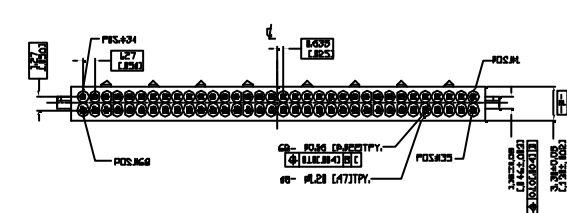
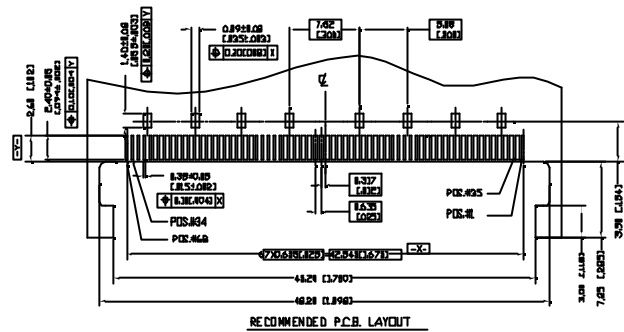
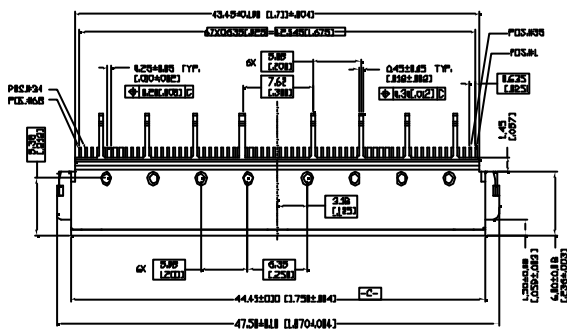
Physical

Housing: Thermoplastic, UL 94V-0 rated in Black Color
Contact: Copper alloy
Grounding Plate: Copper alloy
Plating: See "ORDERING INFORMATION"
Operating Temperature: -20 to +60

WSD Series
 SMT Type
 1.27mm [.050"] Pitch
 68 Pos.

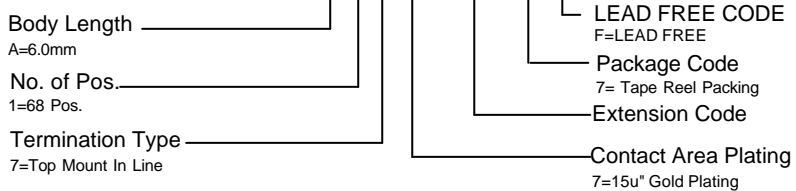


DRAWING



ORDERING INFORMATION

PRODUT NO.: WSD A 1 7 7 - 3C - 7 F



All specification & dimensions are subject to change, please call your nearest Foxconn sales representative for update information