

SPECIFICATIONS

Mechanical

Contact Retention Force: 100gf min.
Durability: 30 Cycles

Electrical

Current Rating: 0.5A DC
Contact Resistance: 60mΩ max.
Dielectrical Withstanding Voltage: 500V
Insulation Resistance: 100MΩ min.

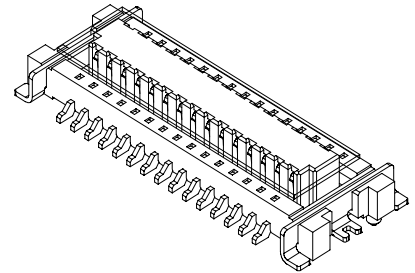
Physical

Housing: PA6T, UL 94V-0 rated in Ivory White Color
Contact: Phosphor Bronze
Plating: 50u" min. Nickel Base Plating
 10u" min. Gold Plating on Contact Area
 100u" min Tin/Lead on Solder Tail Area
Metal Ear: Phosphor Bronze
Operating Temperature: -40 to +80

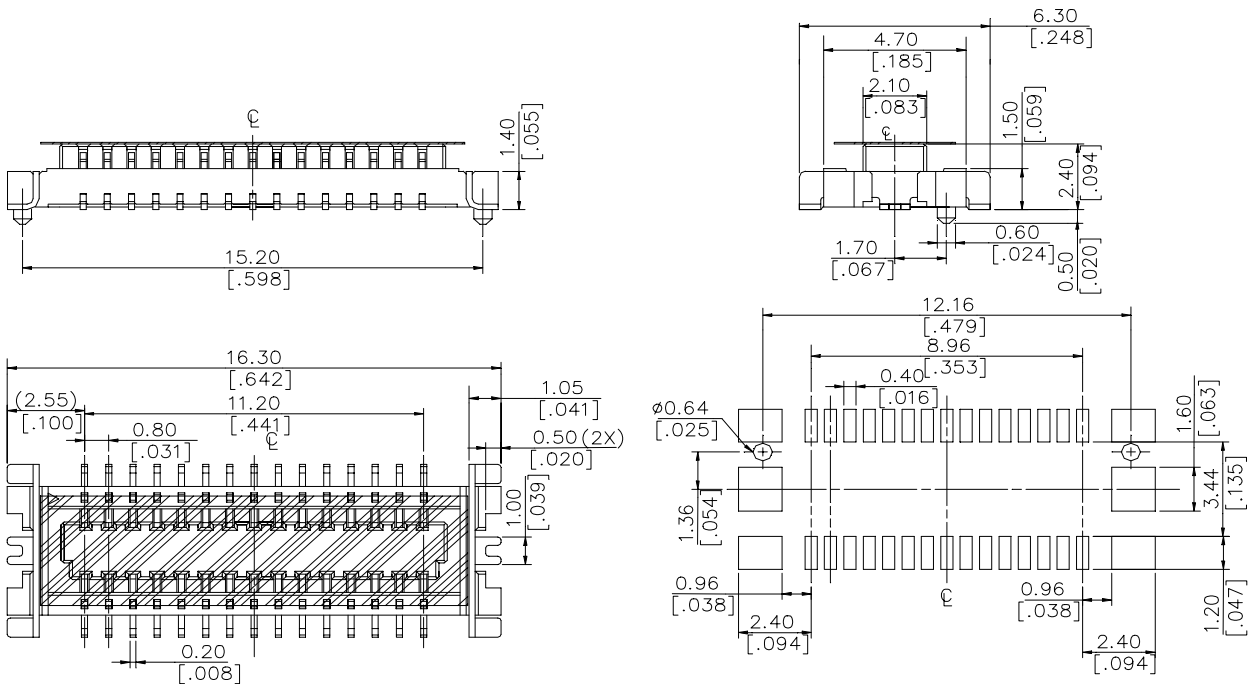
Board to Board Connector

QT8B Series
0.80mm [.031"] Pitch
Vertical, Receptacle ,
for MDC application

Mated with QT8A Series



DRAWING



RECOMMENDED P.C. B. LAYOUT

ORDERING INFORMATION

PRODUCT NO.: Q T 8 B 030 1 - * 0 11-8F

- | | |
|-----------------------|--------------------------|
| Fine Pitch | LEAD FREE CODE |
| Board To Board Conn. | F=LEAD FREE |
| 8=0.8[.031"] pitch | PACKAGE CODE |
| B=Rec. | 8=TAPE & REEL W/ PI-FILM |
| NO. of Pos. | Metal Ear |
| 030=30Pin | 1=W/ M/E |
| Contact Area Plating: | 1=EXTENSION CODE |
| 1=50u" Pure Tin Min. | Ground Pin: |
| | 0=W/O G/P |
| | Profile Height: |
| | 1=2.40[.095"] |